

Product datasheet

Human Apolipoprotein AII ELISA Kit ab184859

Recombinant SimpleStep ELISA

★★★★★ 1 Abreviews 5 Images

Overview

Product name Human Apolipoprotein AII ELISA Kit

Detection method Colorimetric

Precision	Intra-assay				
	Sample	n	Mean	SD	CV%
	HeLa extract	5			2%

	Inter-assay				
	Sample	n	Mean	SD	CV%
	HeLa extract	3			10.6%

Sample type Cell culture supernatant, Urine, Serum, Plasma

Assay type Sandwich (quantitative)

Sensitivity 6 pg/ml

Range 31.25 pg/ml - 2000 pg/ml

Recovery	Sample specific recovery		
	Sample type	Average %	Range
	Urine	90.2	89.3% - 90.8%
	Cell culture media	125.2	122.2% - 127.8%

Assay time 1h 30m

Assay duration One step assay

Species reactivity Reacts with: Human

Product overview Human Apolipoprotein A II ELISA kit (ab184859) is a single-wash 90 min sandwich ELISA designed for the quantitative measurement of Apolipoprotein A II protein in human serum, plasma, urine, cell culture supernatant samples. It uses our proprietary SimpleStep ELISA® technology. Quantitate human Apolipoprotein A II with 6 pg/mL sensitivity.

SimpleStep ELISA® technology employs capture antibodies conjugated to an affinity tag that is recognized by the monoclonal antibody used to coat our SimpleStep ELISA® plates. This approach to sandwich ELISA allows the formation of the antibody-analyte sandwich complex in a single step, significantly reducing assay time. See the SimpleStep ELISA® protocol summary in the image section for further details. Our SimpleStep ELISA® technology provides several benefits:

- Single-wash protocol reduces assay time to 90 minutes or less
- High sensitivity, specificity and reproducibility from superior antibodies
- Fully validated in biological samples
- 96-wells plate breakable into 12 x 8 wells strips

A 384-well SimpleStep ELISA® microplate ([ab203359](#)) is available to use as an alternative to the 96-well microplate provided with SimpleStep ELISA® kits.

Notes

Apolipoprotein All may stabilize HDL (high density lipoprotein) structure by its association with lipids, and affect the HDL metabolism. ApoA2 forms a disulfide-linked homodimer. Apolipoprotein All also forms a disulfide-linked heterodimer with APOD and interacts with HCV core protein, APOA1BP and NDRG1.

Platform

Microplate

Properties

Storage instructions Store at +4°C. Please refer to protocols.

Components	1 x 96 tests	10 x 96 tests
10X Human Apolipoprotein All Capture Antibody	1 x 600µl	1 x 6000µl
10X Human Apolipoprotein All Detector Antibody	1 x 600µl	1 x 6000µl
10X Wash Buffer PT (ab206977)	1 x 20ml	1 x 120ml
Antibody Diluent 5BI	1 x 6ml	10 x 6ml
Human Apolipoprotein All Lyophilized Purified Protein	2 vials	2 x 10 vials
Plate Seals	1 unit	1 x 10 units
Sample Diluent NS (ab193972)	1 x 50ml	2 x 250ml
SimpleStep Pre-Coated 96-Well Microplate (ab206978)	1 unit	1 x 10 units
Stop Solution	1 x 12ml	1 x 120ml
TMB Development Solution	1 x 12ml	1 x 120ml

Function

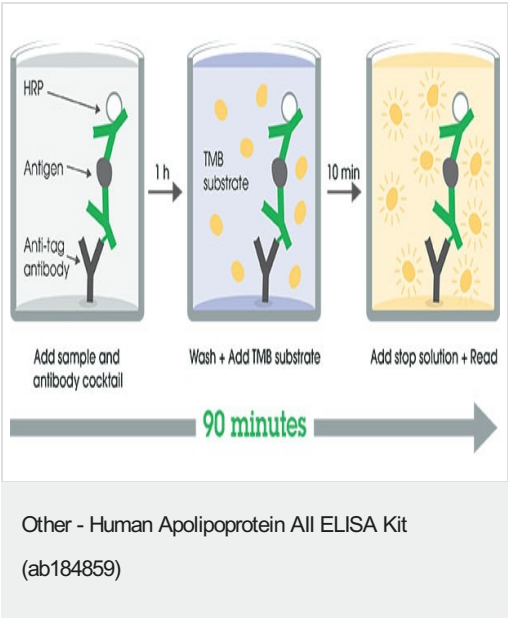
May stabilize HDL (high density lipoprotein) structure by its association with lipids, and affect the HDL metabolism.

Tissue specificity

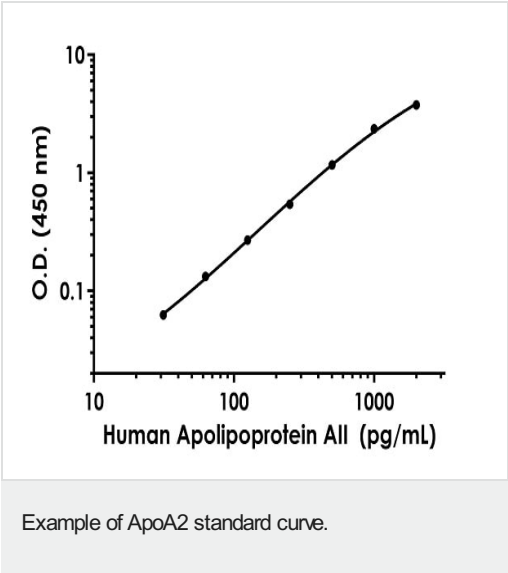
Plasma; synthesized in the liver and intestine.

Sequence similarities	Belongs to the apolipoprotein A2 family.
Post-translational modifications	Phosphorylation sites are present in the extracellular medium.
Cellular localization	Secreted.

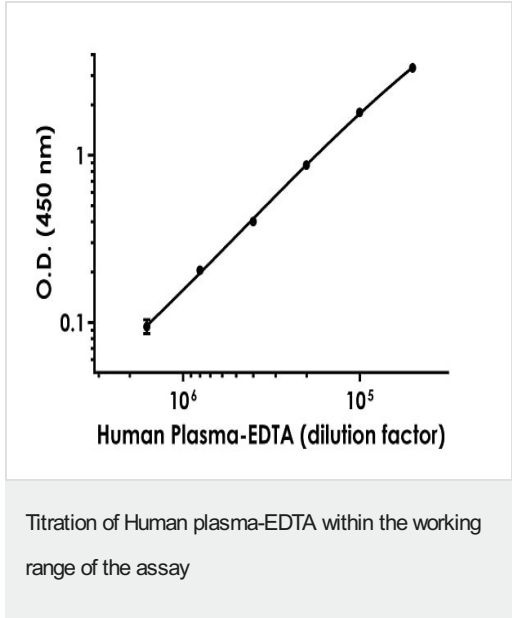
Images



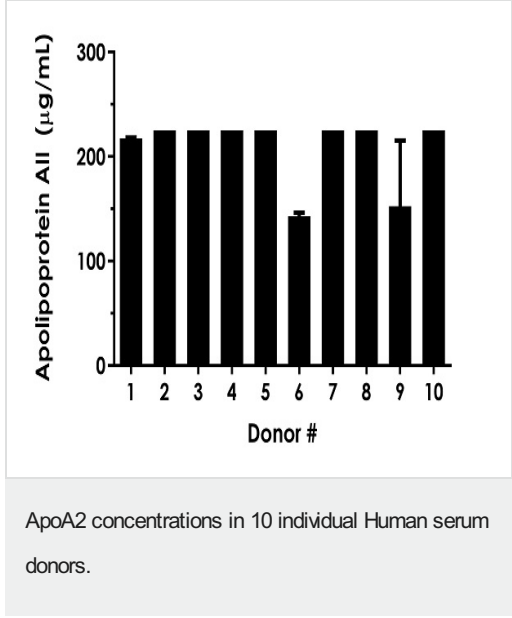
SimpleStep ELISA technology allows the formation of the antibody-antigen complex in one single step, reducing assay time to 90 minutes. Add samples or standards and antibody mix to wells all at once, incubate, wash, and add your final substrate. See protocol for a detailed step-by-step guide.



Background-subtracted data values (mean +/- SD) are graphed.



Background-subtracted data values (mean +/- SD) are graphed.



100,000 X diluted serum samples from 10 apparently healthy male donors were measured using this kit. Interpolated data values corrected for sample dilution are graphed in mg of ApoA2 per mL of serum (mean +/- SD, n=3). The mean of ApoA2 concentration of these ten individual serum samples was determined to be 209 μg/mL with a range of 143 – 225 μg/mL.

Powered by
recombinant antibodies



Research with confidence
Consistent and reproducible results



Long-term and scalable supply
Recombinant technology



Success from the first experiment
Confirmed specificity



Ethical standards compliant
Animal-free production

Sandwich ELISA - Human Apolipoprotein AII ELISA
Kit (ab184859)

To learn more about the advantages of recombinant antibodies see [here](#).

Please note: All products are "FOR RESEARCH USE ONLY. NOT FOR USE IN DIAGNOSTIC PROCEDURES"

Our Abpromise to you: Quality guaranteed and expert technical support

- Replacement or refund for products not performing as stated on the datasheet
- Valid for 12 months from date of delivery
- Response to your inquiry within 24 hours
- We provide support in Chinese, English, French, German, Japanese and Spanish
- Extensive multi-media technical resources to help you
- We investigate all quality concerns to ensure our products perform to the highest standards

If the product does not perform as described on this datasheet, we will offer a refund or replacement. For full details of the Abpromise, please visit <https://www.abcam.com/abpromise> or contact our technical team.

Terms and conditions

- Guarantee only valid for products bought direct from Abcam or one of our authorized distributors