

Human Apolipoprotein E ELISA Kit (APOE) αb108813

★★★★★ 7 Abreviews 30 References 2 Images

Overview

Product name	Human Apolipoprotein E ELISA Kit (APOE)			
Detection method	Colorimetric			
Precision	Intra-assay			
	Sample	n	Mean	SD
	Overall			CV% 6.4%
	Inter-assay			
	Sample	n	Mean	SD
	Overall			CV% 10.1%
Sample type	Cell culture supernatant, Serum, Plasma, Cerebral Spinal Fluid			
Assay type	Sandwich (quantitative)			
Sensitivity	= 3 ng/ml			
Range	0.016 µg/ml - 0.125 µg/ml			
Recovery	97 %			
Assay time	4h 00m			
Assay duration	Multiple steps standard assay			
Species reactivity	<b>Reacts with:</b> Human <b>Does not react with:</b> Cynomolgus monkey			
Product overview	Human Apolipoprotein E ELISA kit (ApoE) is designed for the quantitative measurement of Apolipoprotein E concentrations in human plasma, serum, cerebrospinal fluid and cell culture supernatant samples.			

An Apolipoprotein E specific antibody has been precoated onto 96-well plates and blocked. Standards or test samples are added to the wells and subsequently an Apolipoprotein E specific biotinylated detection antibody is added and then followed by washing with wash buffer. Streptavidin-Peroxidase Complex is added and unbound conjugates are washed away with wash buffer. TMB is then used to visualize Streptavidin-Peroxidase enzymatic reaction. TMB is catalyzed by Streptavidin-Peroxidase to produce a blue color product that changes into yellow after adding acidic stop solution. The density of yellow coloration is directly proportional to the

amount of Apolipoprotein E captured in plate. The kit recognizes ApoE-2, ApoE-3, and ApoE-4 isoforms.

**The entire kit may be stored at -20°C for long term storage before reconstitution - Avoid repeated freeze-thaw cycles.**

**Platform**

Microplate

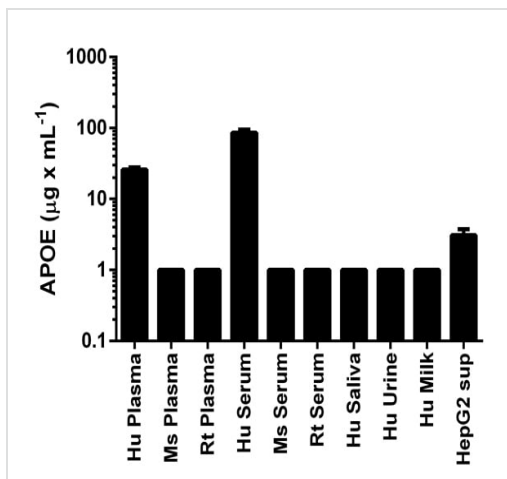
**Properties**

**Storage instructions**

Store at -20°C. Please refer to protocols.

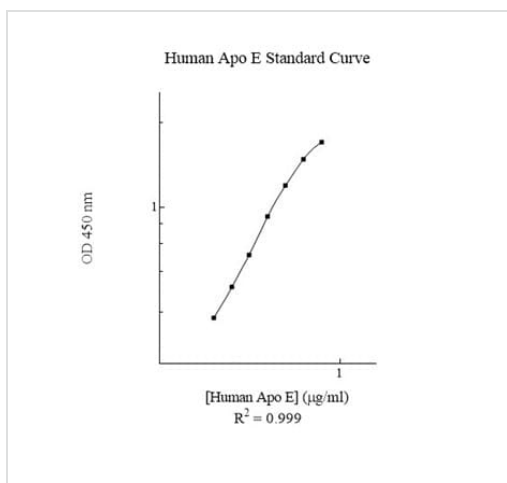
Components	1 x 96 tests	1 x 96 tests
100X Streptavidin-Peroxidase Conjugate	1 x 80µl	1 x 80µl
10X Diluent M Concentrate	1 x 30ml	1 x 30ml
1X Standard Diluent	1 x 2ml	1 x 2ml
20X Wash Buffer Concentrate	2 x 30ml	2 x 30ml
30X Biotinylated Human Apolipoprotein E Antibody	1 vial	1 vial
Apolipoprotein E Microplate (12 x 8 well strips)	1 unit	1 unit
Apolipoprotein E Standard	2 vials	2 vials
Chromogen Substrate	1 x 7ml	1 x 7ml
Sealing Tapes	3 units	3 units
Stop Solution	1 x 11ml	1 x 11ml

**Images**



Apolipoprotein E measured in biological fluids and cell culture medium with background signal subtracted (duplicates +/- SD).

Sandwich ELISA - Apolipoprotein E (APOE) Human  
ELISA Kit (ab108813)



Representative Standard Curve using ab108813.

Typical Standard Curve

**Please note:** All products are "FOR RESEARCH USE ONLY. NOT FOR USE IN DIAGNOSTIC PROCEDURES"

### Our Abpromise to you: Quality guaranteed and expert technical support

- Replacement or refund for products not performing as stated on the datasheet
- Valid for 12 months from date of delivery
- Response to your inquiry within 24 hours
- We provide support in Chinese, English, French, German, Japanese and Spanish
- Extensive multi-media technical resources to help you
- We investigate all quality concerns to ensure our products perform to the highest standards

If the product does not perform as described on this datasheet, we will offer a refund or replacement. For full details of the Abpromise, please visit <https://www.abcam.com/abpromise> or contact our technical team.

## Terms and conditions

---

- Guarantee only valid for products bought direct from Abcam or one of our authorized distributors