

Human beta 2 Microglobulin ELISA Kit (B2M) ab99977

★★★★★ 1 Abreviews 1 References 3 Images

Overview

Product name	Human beta 2 Microglobulin ELISA Kit (B2M)
Detection method	Colorimetric
Sample type	Cell culture supernatant, Serum, Plasma
Assay type	Sandwich (quantitative)
Sensitivity	< 6 pg/ml
Range	15.6 pg/ml - 1000 pg/ml
Recovery	< 100 %

Sample specific recovery

Sample type	Average %	Range
Cell culture supernatant	104.6	93% - 118%
Serum	94.28	80% - 103%
Plasma	95.78	81% - 105%

Assay duration Multiple steps standard assay

Species reactivity Reacts with: Human

Product overview Abcam's beta 2 Microglobulin (B2M) Human ELISA (Enzyme-Linked Immunosorbent Assay) kit is an *in vitro* enzyme-linked immunosorbent assay for the quantitative measurement of Human beta 2 Microglobulin in serum, plasma and cell culture supernatants.

This assay employs an antibody specific for Human beta 2 Microglobulin coated on a 96-well plate. Standards and samples are pipetted into the wells and beta 2 Microglobulin present in a sample is bound to the wells by the immobilized antibody. The wells are washed and biotinylated anti-Human beta 2 Microglobulin antibody is added. After washing away unbound biotinylated antibody, HRP-conjugated streptavidin is pipetted to the wells. The wells are again washed, a TMB substrate solution is added to the wells and color develops in proportion to the amount of beta 2 Microglobulin bound. The Stop Solution changes the color from blue to yellow, and the intensity of the color is measured at 450 nm.

Get higher sensitivity in only 90 minutes with Human Beta-2-Microglobulin ELISA Kit ([ab181423](#))

from our SimpleStep ELISA® range.

Notes	Optimisation may be required with urine samples.
Platform	Microplate

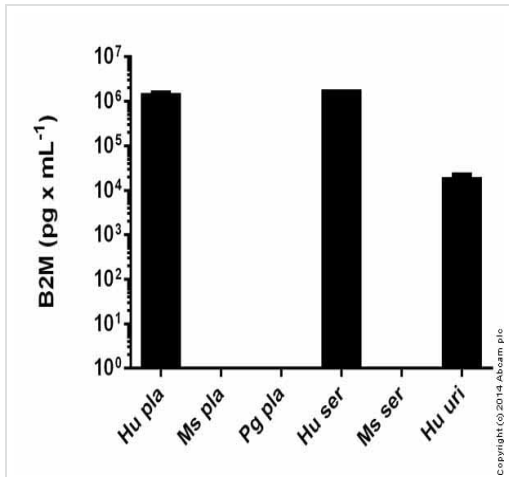
Properties

Storage instructions Store at -20°C. Please refer to protocols.

Components	1 x 96 tests
20X Wash Buffer	1 x 25ml
300X HRP-Streptavidin Concentrate	1 x 200µl
5X Assay Diluent B	1 x 15ml
Assay Diluent A	2 x 30ml
beta 2 Microglobulin Microplate (12 x 8 wells)	1 unit
Biotinylated anti-Human beta 2 Microglobulin	2 vials
Recombinant Human beta 2 Microglobulin Standard (lyophilized)	2 vials
Stop Solution	1 x 8ml
TMB One-Step Substrate Reagent	1 x 12ml

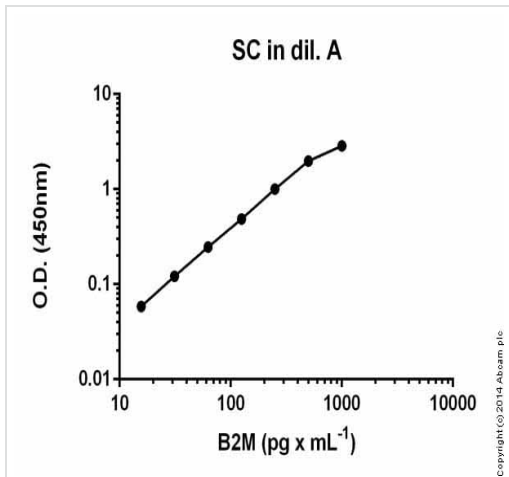
Function	Component of the class I major histocompatibility complex (MHC). Involved in the presentation of peptide antigens to the immune system.
Involvement in disease	Defects in B2M are the cause of hypercatabolic hypoproteinemia (HYCATHYP) [MIM:241600]. Affected individuals show marked reduction in serum concentrations of immunoglobulin and albumin, probably due to rapid degradation. Note=Beta-2-microglobulin may adopt the fibrillar configuration of amyloid in certain pathologic states. The capacity to assemble into amyloid fibrils is concentration dependent. Persistently high beta(2)-microglobulin serum levels lead to amyloidosis in patients on long-term hemodialysis.
Sequence similarities	Belongs to the beta-2-microglobulin family. Contains 1 Ig-like C1-type (immunoglobulin-like) domain.
Post-translational modifications	Glycation of Ile-21 is observed in long-term hemodialysis patients.
Cellular localization	Secreted. Detected in serum and urine.

Images



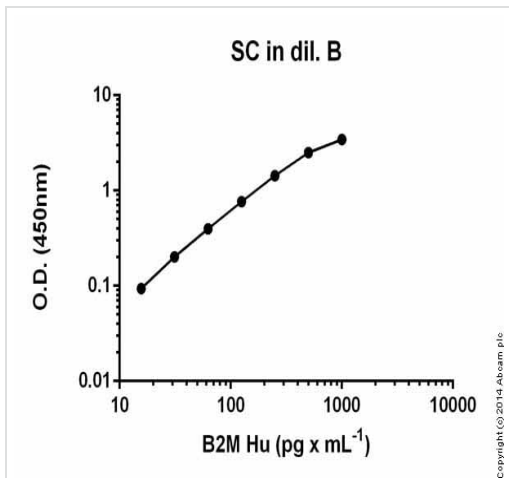
huB2M measured in biofluids showing quantity (pg) per mL of tested sample

Sandwich ELISA - hu B2M ELISA Kit (ab99977)



Representative Standard Curve using ab99977.

Sandwich ELISA - huB2M ELISA Kit (ab99977)



Representative Standard Curve using ab99977.

Sandwich ELISA - huB2M ELISA Kit (ab99977)

Please note: All products are "FOR RESEARCH USE ONLY. NOT FOR USE IN DIAGNOSTIC PROCEDURES"

Our Abpromise to you: Quality guaranteed and expert technical support

- Replacement or refund for products not performing as stated on the datasheet
- Valid for 12 months from date of delivery
- Response to your inquiry within 24 hours
- We provide support in Chinese, English, French, German, Japanese and Spanish
- Extensive multi-media technical resources to help you
- We investigate all quality concerns to ensure our products perform to the highest standards

If the product does not perform as described on this datasheet, we will offer a refund or replacement. For full details of the Abpromise, please visit <https://www.abcam.com/abpromise> or contact our technical team.

Terms and conditions

- Guarantee only valid for products bought direct from Abcam or one of our authorized distributors