

Human C Reactive Protein ELISA Kit (PTX1) ab108826

1 References 1 Image

Overview

Product name	Human C Reactive Protein ELISA Kit (PTX1)				
Detection method	Colorimetric				
Precision	Intra-assay				
	Sample	n	Mean	SD	CV%
	Overall				4%
	Inter-assay				
	Sample	n	Mean	SD	CV%
	Overall				11.3%
Sample type	Cell culture supernatant, Saliva, Milk, Urine, Serum, Plasma, Cerebral Spinal Fluid				
Assay type	Sandwich (quantitative)				
Sensitivity	= 0.2 ng/ml				
Range	0.25 ng/ml - 16 ng/ml				
Recovery	96 %				
Assay time	4h 00m				
Assay duration	Multiple steps standard assay				
Species reactivity	Reacts with: Human				
Product overview	Abcam's C Reactive Protein (PTX1) Human <i>in vitro</i> ELISA (Enzyme-Linked Immunosorbent Assay) kit is designed for the quantitative measurement of C Reactive Protein concentrations in Human plasma, serum, saliva, milk, urine and cell culture supernatants.				

A C Reactive Protein specific antibody has been precoated onto 96-well plates and blocked. Standards or test samples are added to the wells and subsequently a C Reactive Protein specific biotinylated detection antibody is added and then followed by washing with wash buffer. Streptavidin-Peroxidase Conjugate is added and unbound conjugates are washed away with wash buffer. TMB is then used to visualize Streptavidin-Peroxidase enzymatic reaction. TMB is catalyzed by Streptavidin-Peroxidase to produce a blue color product that changes into yellow after adding acidic stop solution. The density of yellow coloration is directly proportional to the amount of C Reactive Protein captured in plate.

Get results in 90 minutes with Human C Reactive Protein ELISA Kit ([ab181416](#)) from our SimpleStep ELISA® range.

The entire kit may be stored at -20°C for long term storage before reconstitution - Avoid repeated freeze-thaw cycles.

Platform Microplate

Properties

Storage instructions Store at -20°C. Please refer to protocols.

Components	1 x 96 tests
100X Streptavidin-Peroxidase Conjugate	1 x 80µl
10X Diluent N Concentrate	1 x 30ml
20X Wash Buffer Concentrate	2 x 30ml
50X Biotinylated Human C Reactive Protein Antibody	1 x 120µl
C Reactive Protein Microplate (12 x 8 well strips)	1 unit
C Reactive Protein Standard	1 vial
Chromogen Substrate	1 x 8ml
Sealing Tapes	3 units
Stop Solution	1 x 12ml

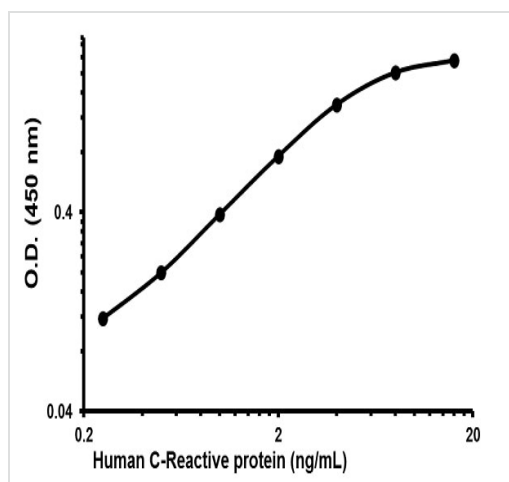
Function Displays several functions associated with host defense: it promotes agglutination, bacterial capsular swelling, phagocytosis and complement fixation through its calcium-dependent binding to phosphorylcholine. Can interact with DNA and histones and may scavenge nuclear material released from damaged circulating cells.

Tissue specificity Found in plasma.

Sequence similarities Belongs to the pentaxin family.
Contains 1 pentaxin domain.

Cellular localization Secreted.

Images



Representative Standard Curve using ab108826

Typical Standard Curve

Please note: All products are "FOR RESEARCH USE ONLY. NOT FOR USE IN DIAGNOSTIC PROCEDURES"

Our Abpromise to you: Quality guaranteed and expert technical support

- Replacement or refund for products not performing as stated on the datasheet
- Valid for 12 months from date of delivery
- Response to your inquiry within 24 hours
- We provide support in Chinese, English, French, German, Japanese and Spanish
- Extensive multi-media technical resources to help you
- We investigate all quality concerns to ensure our products perform to the highest standards

If the product does not perform as described on this datasheet, we will offer a refund or replacement. For full details of the Abpromise, please visit <https://www.abcam.com/abpromise> or contact our technical team.

Terms and conditions

- Guarantee only valid for products bought direct from Abcam or one of our authorized distributors