

Human Cathepsin B ELISA Kit ab119584

8 References 3 Images

Overview

| | |
|--------------------|--|
| Product name | Human Cathepsin B ELISA Kit |
| Detection method | Colorimetric |
| Sample type | Cell culture supernatant, Serum, Plasma, Other biological fluids, Tissue Extracts, Cell Lysate |
| Assay type | Sandwich (quantitative) |
| Sensitivity | < 5 pg/ml |
| Range | 156 pg/ml - 10000 pg/ml |
| Assay duration | Multiple steps standard assay |
| Species reactivity | Reacts with: Human |
| Product overview | <p>Abcam's Human Cathepsin B <i>in vitro</i> ELISA (Enzyme-Linked Immunosorbent Assay) kit is designed for the accurate quantitative measurement of Human Cathepsin B in cell culture supernatants, serum and plasma (heparin, EDTA).</p> <p>A Cathepsin B specific goat polyclonal antibody has been precoated onto 96-well plates. Standards and test samples are added to the wells and incubated. A biotinylated detection polyclonal antibody from goat, specific for Cathepsin B is then added followed by washing with PBS or TBS buffer. Avidin-Biotin-Peroxidase Complex is added and unbound conjugates are washed away with PBS or TBS buffer. TMB is then used to visualize the HRP enzymatic reaction. TMB is catalyzed by HRP to produce a blue color product that changes into yellow after adding acidic stop solution. The density of yellow coloration is directly proportional to the Human Cathepsin B amount of sample captured in plate.</p> |
| Platform | Microplate |

Properties

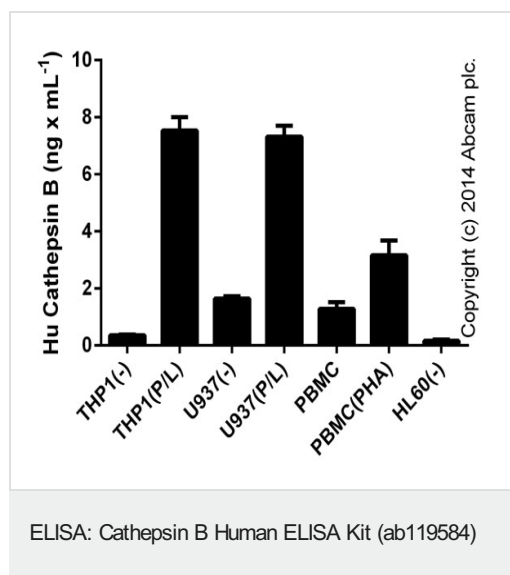
Storage instructionsStore at -20°C. Please refer to protocols.

| Components | Identifier | 1 x 96 tests | 1 x 96 tests |
|-------------------------|------------|--------------|--------------|
| ABC Diluent Buffer | Blue Cap | 1 x 12ml | 1 x 12ml |
| Antibody Diluent Buffer | Green Cap | 1 x 12ml | 1 x 12ml |
| | | | |

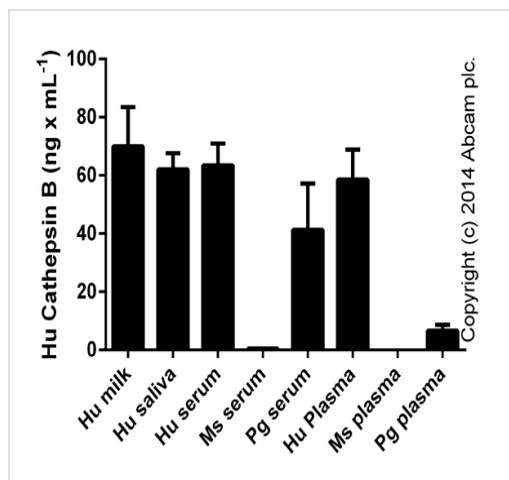
| Components | Identifier | 1 x 96 tests | 1 x 96 tests |
|---|--------------|--------------|--------------|
| Anti-Human Cathepsin B antibody Microplate (12 x 8 wells) | | 1 unit | 1 unit |
| Avidin-Biotin-Peroxidase Complex (ABC) | | 1 x 100µl | 1 x 100µl |
| Biotinylated anti-Human Cathepsin B antibody | | 1 x 100µl | 1 x 100µl |
| Lyophilized recombinant Human Cathepsin B standard | | 2 x 10ng | 2 x 10ng |
| Plate Seal | | 1 x 4 units | 1 x 4 units |
| Sample Diluent Buffer | Green Cap | 1 x 30ml | 1 x 30ml |
| TMB Color Developing Agent | Amber Bottle | 1 x 10ml | 1 x 10ml |
| TMB Stop Solution | Yellow Cap | 1 x 10ml | 1 x 10ml |
| Wash Buffer (25X) | | 1 x 20ml | 1 x 20ml |

| | |
|------------------------------|---|
| Function | Thiol protease which is believed to participate in intracellular degradation and turnover of proteins. Has also been implicated in tumor invasion and metastasis. |
| Sequence similarities | Belongs to the peptidase C1 family. |
| Cellular localization | Lysosome. Melanosome. Identified by mass spectrometry in melanosome fractions from stage I to stage IV. |

Images

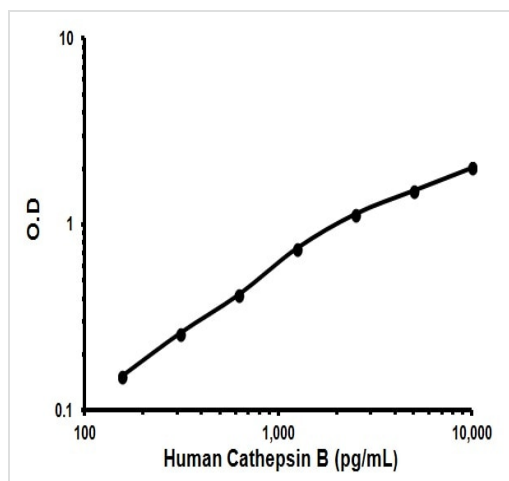


Cathepsin B measured in culture supernatants from control (-) or stimulated cells (P/L: 24 hours with 50 ng x mL⁻¹ of PMA ([ab120297](#)) with 1 ug x mL⁻¹ of LPS (Sigma) for the last 6 hours; PHA: 48 hours with 2% PHA-M; LifeTechnologies). Data shown represents duplicates (+/- SD), samples tested in the dilution range of 1/1-1/20.



Cathepsin B measured in biological fluids (tested in the range of 1/10-1/1000; duplicates +/- SD).

ELISA: Cathepsin B Human ELISA Kit (ab119584)



Representative Standard Curve Using ab119584.

Typical Standard Curve

Please note: All products are "FOR RESEARCH USE ONLY. NOT FOR USE IN DIAGNOSTIC PROCEDURES"

Our Abpromise to you: Quality guaranteed and expert technical support

- Replacement or refund for products not performing as stated on the datasheet
- Valid for 12 months from date of delivery
- Response to your inquiry within 24 hours
- We provide support in Chinese, English, French, German, Japanese and Spanish
- Extensive multi-media technical resources to help you
- We investigate all quality concerns to ensure our products perform to the highest standards

If the product does not perform as described on this datasheet, we will offer a refund or replacement. For full details of the Abpromise, please visit <https://www.abcam.com/abpromise> or contact our technical team.

Terms and conditions

- Guarantee only valid for products bought direct from Abcam or one of our authorized distributors