

Human CD27 ELISA Kit ab285272

1 Image

Overview

Product name	Human CD27 ELISA Kit			
Detection method	Colorimetric			
Precision	Intra-assay			
	Sample	n	Mean	SD
	Overall			CV%
				< 8%
	Inter-assay			
	Sample	n	Mean	SD
	Overall			CV%
				< 10%
Sample type	Serum, Plasma, Other biological fluids, Tissue Homogenate			
Assay type	Sandwich (quantitative)			
Sensitivity	< 0.094 ng/ml			
Range	0.156 ng/ml - 10 ng/ml			
Assay duration	Multiple steps standard assay			
Species reactivity	Reacts with: Human			
Product overview	Human CD27 ELISA Kit (ab285272, E4547) is used for quantitative measurement of CD27 in serum, plasma, tissue homogenates and other biological fluids.			

CD27 is the receptor for CD70/CD27L. It plays a role in survival of activated T-cells and in apoptosis through association with SIVA1. The CD27 ELISA kit ab285272 is a sandwich ELISA assay for the quantitative measurement of CD27 in human serum, plasma and cell culture supernatants. The density of color is proportional to the amount of CD27 captured from the samples.

Platform	Microplate (12 x 8 well strips)
----------	---------------------------------

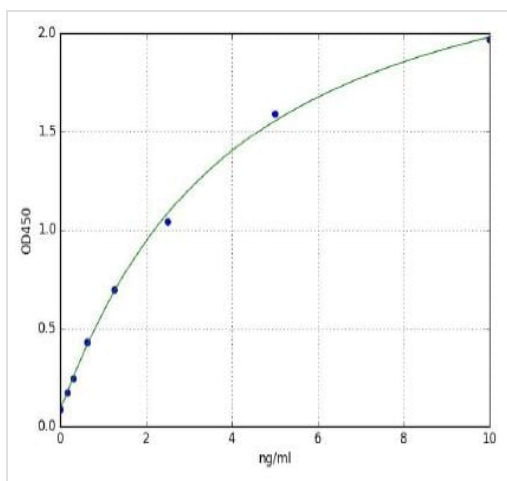
Properties

Storage instructions	Store at +4°C. Please refer to protocols.
----------------------	---

Components	96 tests
25X Wash buffer	1 x 30ml
Antibody dilution buffer	1 x 10ml
Biotin/Detection antibody (Concentrated)	1 x 120µl
HRP-Streptavidin Conjugate (SABC)	1 x 120µl
Lyophilized Standard	2 vials
Micro ELISA Plate	1 unit
Plate Sealer	5 units
SABC dilution buffer	1 x 10ml
Sample / Standard Dilution Buffer	1 x 20ml
Stop Solution	1 x 10ml
TMB Substrate	1 x 10ml

Function	Receptor for CD70/CD27L. May play a role in survival of activated T-cells. May play a role in apoptosis through association with SIVA1.
Tissue specificity	Found in most T-lymphocytes.
Sequence similarities	Contains 3 TNFR-Cys repeats.
Post-translational modifications	Phosphorylated and O-glycosylated.
Cellular localization	Membrane.

Images



CD27 / TNFRSF7 (Human) ELISA Kit Standard
Curve

Typical Standard Curve: These standard curves are for demonstration only. A standard curve must be run with each assay.

Please note: All products are "FOR RESEARCH USE ONLY. NOT FOR USE IN DIAGNOSTIC PROCEDURES"

Our Abpromise to you: Quality guaranteed and expert technical support

- Replacement or refund for products not performing as stated on the datasheet
- Valid for 12 months from date of delivery
- Response to your inquiry within 24 hours
- We provide support in Chinese, English, French, German, Japanese and Spanish
- Extensive multi-media technical resources to help you
- We investigate all quality concerns to ensure our products perform to the highest standards

If the product does not perform as described on this datasheet, we will offer a refund or replacement. For full details of the Abpromise, please visit <https://www.abcam.com/abpromise> or contact our technical team.

Terms and conditions

- Guarantee only valid for products bought direct from Abcam or one of our authorized distributors