

Human Cdc25C ELISA Kit ab230944

Recombinant SimpleStep ELISA®

4 Images

Overview

Product name	Human Cdc25C ELISA Kit				
Detection method	Colorimetric				
Precision	Intra-assay				
	Sample	n	Mean	SD	CV%
	cell extract	8			3.8%
	Inter-assay				
	Sample	n	Mean	SD	CV%
	cell extract	3			6.9%
Sample type	Cell culture extracts				
Assay type	Sandwich (quantitative)				
Sensitivity	19 pg/ml				
Range	78.1 pg/ml - 5000 pg/ml				
Recovery	Sample specific recovery				
	Sample type		Average %		Range
	Cell culture extracts		95		90% - 100%
Assay time	1h 30m				
Assay duration	One step assay				
Species reactivity	Reacts with: Human				
Product overview	Human Cdc25C ELISA Kit (ab230944) is a single-wash 90 min sandwich ELISA designed for the quantitative measurement of Cdc25C protein in cell culture extracts. It uses our proprietary SimpleStep ELISA® technology. Quantitate Human Cdc25C with 19 pg/ml sensitivity.				

SimpleStep ELISA® technology employs capture antibodies conjugated to an affinity tag that is recognized by the monoclonal antibody used to coat our SimpleStep ELISA® plates. This

approach to sandwich ELISA allows the formation of the antibody-analyte sandwich complex in a single step, significantly reducing assay time. See the SimpleStep ELISA® protocol summary in the image section for further details. Our SimpleStep ELISA® technology provides several benefits:

- Single-wash protocol reduces assay time to 90 minutes or less
- High sensitivity, specificity and reproducibility from superior antibodies
- Fully validated in biological samples
- 96-wells plate breakable into 12 x 8 wells strips

A 384-well SimpleStep ELISA® microplate (**ab203359**) is available to use as an alternative to the 96-well microplate provided with SimpleStep ELISA® kits.

**Notes**

Abcam has not and does not intend to apply for the REACH Authorisation of customers' uses of products that contain European Authorisation list (Annex XIV) substances. It is the responsibility of our customers to check the necessity of application of REACH Authorisation, and any other relevant authorisations, for their intended uses.

**Platform** Pre-coated microplate (12 x 8 well strips)

## Properties

**Storage instructions** Store at +4°C. Please refer to protocols.

Components	1 x 96 tests
10X Human Cdc25C Capture Antibody	1 x 600µl
10X Wash Buffer PT (ab206977)	1 x 20ml
5X Cell Extraction Buffer PTR (ab193970)	1 x 10ml
Antibody Diluent 5BI	11 x 66ml
Human Cdc25C Detector Antibody (Lyophilized)	1 vial
Human Cdc25C Lyophilized Recombinant Protein	2 vials
Plate Seals	1 unit
Sample Diluent NS (ab193972)	1 x 12ml
SimpleStep Pre-Coated 96-Well Microplate (ab206978)	1 unit
Stop Solution	1 x 12ml
TMB Development Solution	1 x 12ml

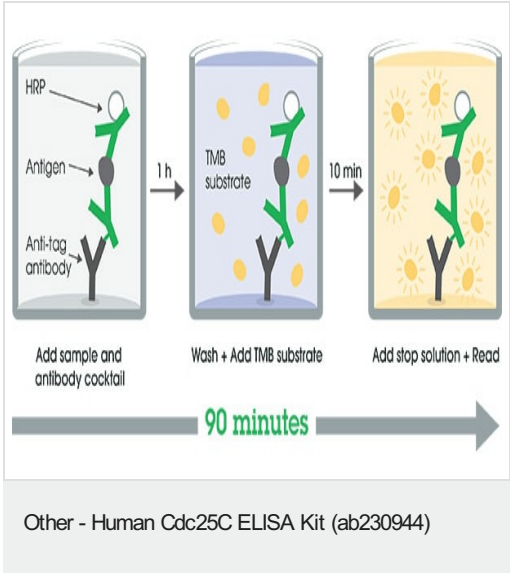
**Function**

Functions as a dosage-dependent inducer in mitotic control. It is a tyrosine protein phosphatase required for progression of the cell cycle. It directly dephosphorylates CDK1 and activate its kinase activity.

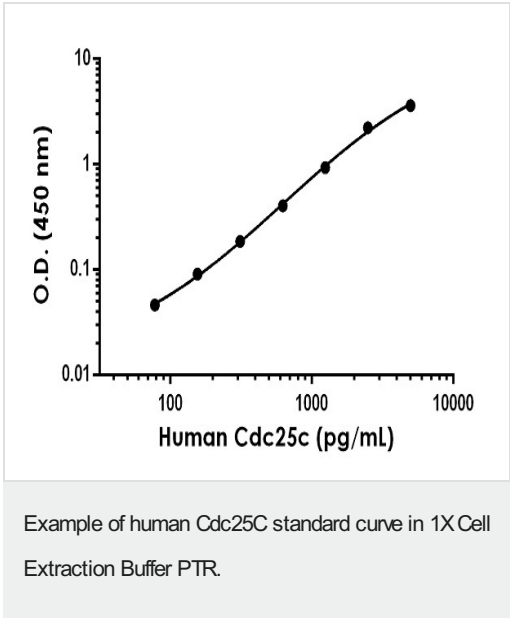
**Sequence similarities** Belongs to the MPI phosphatase family.

	Contains 1 rhodanese domain.
<b>Developmental stage</b>	Expressed predominantly in G2 phase.
<b>Post-translational modifications</b>	Phosphorylated by CHK1 on Ser-216. This phosphorylation creates a binding site for 14-3-3 protein and inhibits the phosphatase. Phosphorylated by PLK4.
<b>Cellular localization</b>	Nucleus.

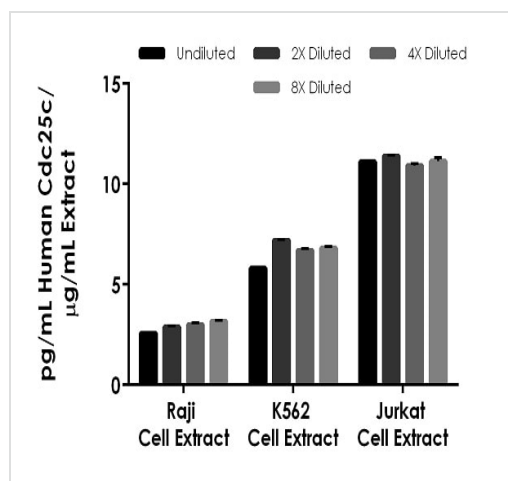
Images



SimpleStep ELISA technology allows the formation of the antibody-antigen complex in one single step, reducing assay time to 90 minutes. Add samples or standards and antibody mix to wells all at once, incubate, wash, and add your final substrate. See protocol for a detailed step-by-step guide.



The Cdc25C standard curve was prepared as described in Section 10. Raw data values are shown in the table. Background-subtracted data values (mean +/- SD) are graphed.



Interpolated concentrations of native Cdc25C in human Raji, K562, and Jurkat cell extract, sample based on a 500 µg/mL, 887 µg/mL, and 466µg/mL extract load, respectively.

To learn more about the advantages of recombinant antibodies see [here](#).

Powered by recombinant antibodies

**Research with confidence**  
Consistent and reproducible results

**Long-term and scalable supply**  
Recombinant technology

**Success from the first experiment**  
Confirmed specificity

**Ethical standards compliant**  
Animal-free production

Sandwich ELISA - Human Cdc25C ELISA Kit (ab230944)

**Please note:** All products are "FOR RESEARCH USE ONLY. NOT FOR USE IN DIAGNOSTIC PROCEDURES"

## Our Abpromise to you: Quality guaranteed and expert technical support

- Replacement or refund for products not performing as stated on the datasheet

- Valid for 12 months from date of delivery
- Response to your inquiry within 24 hours
- We provide support in Chinese, English, French, German, Japanese and Spanish
- Extensive multi-media technical resources to help you
- We investigate all quality concerns to ensure our products perform to the highest standards

If the product does not perform as described on this datasheet, we will offer a refund or replacement. For full details of the Abpromise, please visit <https://www.abcam.com/abpromise> or contact our technical team.

#### **Terms and conditions**

---

- Guarantee only valid for products bought direct from Abcam or one of our authorized distributors