

Human CDKN2A/p16INK4α ELISA Kit ab227903

Recombinant SimpleStep ELISA®

1 References 5 Images

Overview

Product name Human CDKN2A/p16INK4a ELISA Kit

Detection method Colorimetric

Precision

Intra-assay

Sample	n	Mean	SD	CV%
HEK293T Ext	5			3.6%

					Inter-assay
Sample	n	Mean	SD	CV%	
HEK293T Ext	3			3.4%	

Sample type Cell culture extracts, Tissue Extracts

Assay type Sandwich (quantitative)

Sensitivity 1.3 ng/ml

Range 2.3 ng/ml - 150 ng/ml

Recovery

Sample specific recovery		
Sample type	Average %	Range
Cell culture extracts	116	110% - 125%
Tissue Extracts	95	92% - 96%

Assay time 1h 30m

Assay duration One step assay

Species reactivity Reacts with: Human

Product overview Human CDKN2A/p16INK4a ELISA Kit (ab227903) is a single-wash 90 min sandwich ELISA designed for the quantitative measurement of CDKN2A/p16INK4a protein in cell culture extracts and tissue extracts. It uses our proprietary SimpleStep ELISA® technology. Quantitate Human CDKN2A/p16INK4a with 1.3 ng/ml sensitivity.

SimpleStep ELISA® technology employs capture antibodies conjugated to an affinity tag that is recognized by the monoclonal antibody used to coat our SimpleStep ELISA® plates. This approach to sandwich ELISA allows the formation of the antibody-analyte sandwich complex in a single step, significantly reducing assay time. See the SimpleStep ELISA® protocol summary in the image section for further details. Our SimpleStep ELISA® technology provides several benefits:

- Single-wash protocol reduces assay time to 90 minutes or less
- High sensitivity, specificity and reproducibility from superior antibodies
- Fully validated in biological samples
- 96-wells plate breakable into 12 x 8 wells strips

A 384-well SimpleStep ELISA® microplate ([ab203359](#)) is available to use as an alternative to the 96-well microplate provided with SimpleStep ELISA® kits.

Notes

Abcam has not and does not intend to apply for the REACH Authorisation of customers' uses of products that contain European Authorisation list (Annex XIV) substances. It is the responsibility of our customers to check the necessity of application of REACH Authorisation, and any other relevant authorisations, for their intended uses.

Platform

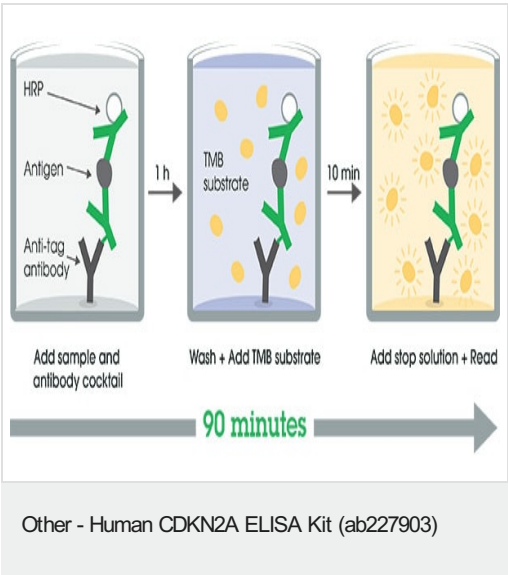
Pre-coated microplate (12 x 8 well strips)

Properties

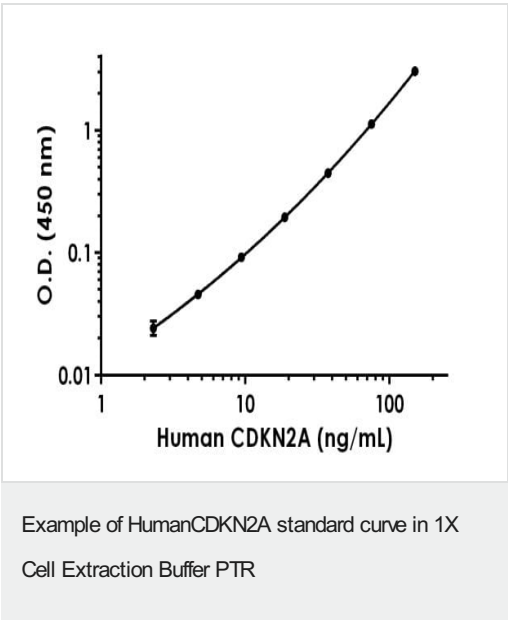
Storage instructions Store at +4°C. Please refer to protocols.

Components	1 x 96 tests
10X Human CDKN2A Capture Antibody	1 x 600µl
10X Human CDKN2A Detector Antibody	1 x 600µl
10X Wash Buffer PT (ab206977)	1 x 20ml
50X Cell Extraction Enhancer Solution (ab193971)	1 x 1ml
5X Cell Extraction Buffer PTR (ab193970)	1 x 10ml
Antibody Diluent CPI - HAMA Blocker (ab193969)	1 x 6ml
Human CDKN2A Lyophilized Recombinant Protein	2 vials
Plate Seals	1 unit
Sample Diluent NS (ab193972)	1 x 12ml
SimpleStep Pre-Coated 96-Well Microplate (ab206978)	1 unit
Stop Solution	1 x 12ml
TMB Development Solution	1 x 12ml

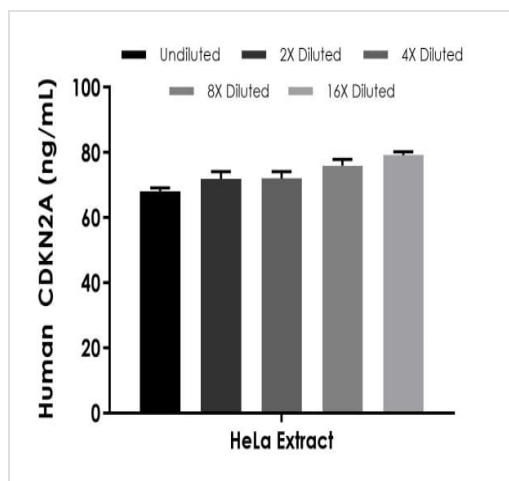
Images



SimpleStep ELISA technology allows the formation of the antibody-antigen complex in one single step, reducing assay time to 90 minutes. Add samples or standards and antibody mix to wells all at once, incubate, wash, and add your final substrate. See protocol for a detailed step-by-step guide.

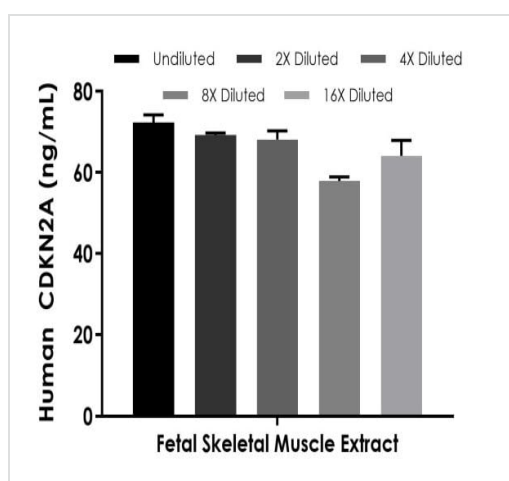


Background-subtracted data values (mean +/- SD) are graphed.



Interpolated concentrations of native CDKN2A in Human HeLa extract based on a 500 µg/mL extract load

The concentrations of CDKN2A/p16INK4a were measured in duplicate and interpolated from the CDKN2A/p16INK4a standard curve and corrected for sample dilution. The interpolated dilution factor corrected values are plotted (mean \pm SD, n=2). The mean CDKN2A/p16INK4a concentration was determined to be 73 ng/mL in HeLa cell extract.



Interpolated concentrations of spiked CDKN2A in Human Fetal Skeletal Muscle tissue homogenate extract based on a 250 µg/mL extract load

The concentrations of CDKN2A/p16INK4a were measured in duplicate and interpolated from the CDKN2A/p16INK4a standard curve and corrected for sample dilution. The interpolated dilution factor corrected values are plotted (mean \pm SD, n=2).

Powered by
recombinant antibodies



Research with confidence
Consistent and reproducible results



Long-term and scalable supply
Recombinant technology



Success from the first experiment
Confirmed specificity



Ethical standards compliant
Animal-free production

Sandwich ELISA - Human CDKN2A ELISA Kit
(ab227903)

To learn more about the advantages of recombinant antibodies see [here](#).

Please note: All products are "FOR RESEARCH USE ONLY. NOT FOR USE IN DIAGNOSTIC PROCEDURES"

Our Abpromise to you: Quality guaranteed and expert technical support

- Replacement or refund for products not performing as stated on the datasheet
- Valid for 12 months from date of delivery
- Response to your inquiry within 24 hours
- We provide support in Chinese, English, French, German, Japanese and Spanish
- Extensive multi-media technical resources to help you
- We investigate all quality concerns to ensure our products perform to the highest standards

If the product does not perform as described on this datasheet, we will offer a refund or replacement. For full details of the Abpromise, please visit <https://www.abcam.com/abpromise> or contact our technical team.

Terms and conditions

- Guarantee only valid for products bought direct from Abcam or one of our authorized distributors