

Human CDNF ELISA Kit ab260071

Recombinant SimpleStep ELISA®

5 Images

Overview

Product name	Human CDNF ELISA Kit				
Detection method	Colorimetric				
Precision	Intra-assay				
	Sample	n	Mean	SD	CV%
	Extract	8			8.4%
	Inter-assay				
	Sample	n	Mean	SD	CV%
	Extract	3			8.6%
Sample type	Tissue Extracts				
Assay type	Sandwich (quantitative)				
Sensitivity	3 pg/ml				
Range	7.81 pg/ml - 500 pg/ml				
Recovery	Sample specific recovery				
	Sample type	Average %		Range	
	Tissue Extracts	106		97% - 118%	
Assay time	1h 30m				
Assay duration	One step assay				
Species reactivity	Reacts with: Human				
Product overview	Human CDNF ELISA Kit (ab260071) is a single-wash 90 min sandwich ELISA designed for the quantitative measurement of CDNF protein in tissue extracts. It uses our proprietary SimpleStep ELISA® technology. Quantitate Human CDNF with 3 pg/ml sensitivity.				

SimpleStep ELISA® technology employs capture antibodies conjugated to an affinity tag that is recognized by the monoclonal antibody used to coat our SimpleStep ELISA® plates. This

approach to sandwich ELISA allows the formation of the antibody-analyte sandwich complex in a single step, significantly reducing assay time. See the SimpleStep ELISA® protocol summary in the image section for further details. Our SimpleStep ELISA® technology provides several benefits:

- Single-wash protocol reduces assay time to 90 minutes or less
- High sensitivity, specificity and reproducibility from superior antibodies
- Fully validated in biological samples
- 96-wells plate breakable into 12 x 8 wells strips

A 384-well SimpleStep ELISA® microplate (**ab203359**) is available to use as an alternative to the 96-well microplate provided with SimpleStep ELISA® kits.

**Notes** CDNF, Cerebral dopamine neurotrophic factor, is a non-classical neurotrophic factor found in the brain and released during ER stress and calcium depletion. It is currently being studied as a potential therapeutic target for Parkinson's disease. This kit targets the mature, full-length, protein form which lacks the N-terminal signaling peptide.

Abcam has not and does not intend to apply for the REACH Authorisation of customers' uses of products that contain European Authorisation list (Annex XIV) substances.

It is the responsibility of our customers to check the necessity of application of REACH Authorisation, and any other relevant authorisations, for their intended uses.

**Platform** Pre-coated microplate (12 x 8 well strips)

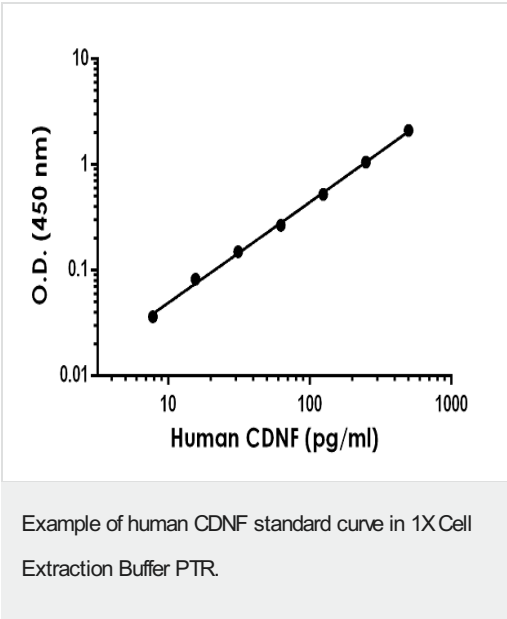
## Properties

**Storage instructions** Store at +4°C. Please refer to protocols.

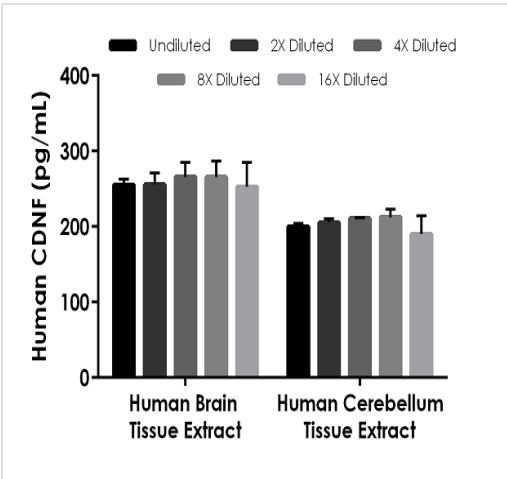
Components	1 x 96 tests
10X Human CDNF Capture Antibody	1 x 600µl
10X Human CDNF Detector Antibody	1 x 600µl
10X Wash Buffer PT (ab206977)	1 x 20ml
5X Cell Extraction Buffer PTR (ab193970)	1 x 10ml
Antibody Diluent 4BR	1 x 6ml
Human CDNF Lyophilized Recombinant Protein	2 vials
Plate Seals	1 unit
Sample Diluent NS (ab193972)	1 x 12ml
SimpleStep Pre-Coated 96-Well Microplate (ab206978)	1 unit
Stop Solution	1 x 12ml
TMB Development Solution	1 x 12ml

Function	Trophic factor for dopamine neurons. Prevents the 6-hydroxydopamine (6-OHDA)-induced degeneration of dopaminergic neurons. When administered after 6-OHDA-lesioning, restores the dopaminergic function and prevents the degeneration of dopaminergic neurons in substantia nigra.
Tissue specificity	Widely expressed in neuronal and non-neuronal tissues. In the brain, highest levels in the optic nerve and corpus callosum.
Sequence similarities	Belongs to the ARMET family.
Cellular localization	Secreted.

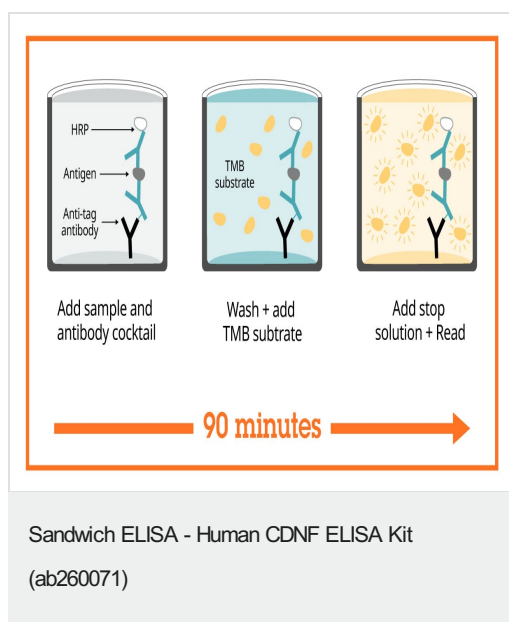
### Images



The CDNF standard curve was prepared as described in Section 10. Raw data values are shown in the table. Background-subtracted data values (mean +/- SD) are graphed.



The concentrations of CDNF were measured in duplicate and interpolated from the CDNF standard curve and corrected for sample dilution. The interpolated dilution factor corrected values are plotted (mean +/- SD, n=2). The mean CDNF concentration was determined to be 259.16 mg/mL in human brain tissue extract and 203.93 mg/mL in human cerebellum tissue extract.



SimpleStep ELISA technology allows the formation of the antibody-antigen complex in one single step, reducing assay time to 90 minutes. Add samples or standards and antibody mix to wells all at once, incubate, wash, and add your final substrate. See protocol for a detailed step-by-step guide.



To learn more about the advantages of recombinant antibodies see [here](#).

**Get more done with  
SimpleStep ELISA**



**Easy to use**  
Single-wash 90-minute  
protocol



**Flexible**  
Matched antibody pairs  
available



**Precision antibodies**  
High sensitivity, specificity  
and reproducibility



**Scalable**  
Now in 10-pack and  
384-well formats

Sandwich ELISA - Human CDNF ELISA Kit  
(ab260071)

To learn more about the advantages of SimpleStep ELISA® kits  
see [here](#).

**Please note:** All products are "FOR RESEARCH USE ONLY. NOT FOR USE IN DIAGNOSTIC PROCEDURES"

### Our Abpromise to you: Quality guaranteed and expert technical support

---

- Replacement or refund for products not performing as stated on the datasheet
- Valid for 12 months from date of delivery
- Response to your inquiry within 24 hours
- We provide support in Chinese, English, French, German, Japanese and Spanish
- Extensive multi-media technical resources to help you
- We investigate all quality concerns to ensure our products perform to the highest standards

If the product does not perform as described on this datasheet, we will offer a refund or replacement. For full details of the Abpromise, please visit <https://www.abcam.com/abpromise> or contact our technical team.

### Terms and conditions

---

- Guarantee only valid for products bought direct from Abcam or one of our authorized distributors