

Human Cell Cycle In-Cell ELISA kit (IR) ab139412

2 References 4 Images

Overview

Product name Human Cell Cycle In-Cell ELISA kit (IR)

Detection method Colorimetric

Precision	Intra-assay				
	Sample	n	Mean	SD	CV%
	Histone H3				3.9%
	Cdk2				4.4%

Sample type Adherent cells, Suspension cells

Assay type Cell-based (quantitative)

Assay duration Multiple steps standard assay

Species reactivity **Reacts with:** Mouse, Human

Product overview Human Cell Cycle In-Cell ELISA kit (IR) (ab139412) that uses quantitative immunocytochemistry to measure levels of Cdk2 protein phosphorylated Tyr15 and Histone H3 protein phosphorylated Ser10 levels in cultured cells. Cells are fixed in a microplate and targets of interest are detected with highly specific, well-characterized antibodies. Relative target levels are quantified using IRDye®-labeled Secondary Antibodies and IR imaging such as a LI-COR® Odyssey® or Aeries® system. Antibody signal intensity can be normalized to the total cell amount using Janus Green stain.

Plates are available in our ICE (In-Cell ELISA) Support Pack ([ab111542](#)) which can be bought seperately.

Notes The Cdk2 (pTyr15) + Histone H3 (pSer10) In-Cell ELISA Kit (IR) (ab139412) is designed to study cell cycle effects in response to various stimuli. Monoclonal antibodies specific to Cdk2 (pTyr15) and Histone H3 (pSer10) are used in this high-throughput duplexing plate-based assay. Cdk2 (pTyr15) is elevated in G1/S phase of the cell cycle and Histone H3 (pSer10) is elevated in G2/M phase. Cyclin-dependent kinase 2 (Cdk2) is a nuclear protein kinase that functions in the G1/S phase of the cell cycle. Inhibitory phosphorylation occurs on residues Thr14 and Tyr15; activation of Cdk2 includes dephosphorylation of these residues by cdc25. Cdk2 can form a complex with Cyclin A, D or E. Phosphorylation of Cdk2 at Tyr15 indicates that a cell is at the G1/S transition.

Histone H3 is one of the four core histone proteins (H2A, H2B, H3 and H4) that pack DNA in nucleosomes. Post-translational modifications of histones include phosphorylation and acetylation

and are important for chromatin assembly and gene expression. Phosphorylation of Histone H3 at Ser10 is tightly correlated with chromosome condensation during mitosis. Hence, Histone H3 pSer10 signal indicates a mitotic cell with condensed DNA.

In-Cell ELISA (ICE) technology employed to perform quantitative immunocytochemistry of cultured cells with a near-infrared fluorescent dye-labeled detector antibody. The technique generates quantitative data with specificity similar to western blotting, but with much greater quantitative precision and higher throughput due to the greater dynamic range and linearity of direct fluorescence detection and the ability to run 96 samples in parallel. Because the Cdk2 (pTyr15) antibody is a rabbit antibody and the Histone H3 (pSer10) antibody is a mouse antibody, they can be measured simultaneously in the same well using the cocktail of provided primary antibodies and the provided cocktail of IRDye®-labeled species-specific secondary antibodies when using a LI-COR infrared imager. This method rapidly fixes the cells in situ, stabilizing the in vivo levels of proteins and their post-translational modifications, and thus eliminating changes during sample handling, such as in the preparation of protein extracts. Finally, the Cdk2 (pTyr15) and Histone H3 (pSer10) signals can be normalized to cell amount, measured by the provided Janus Green whole cell stain, to further increase the assay precision.

Abcam has not and does not intend to apply for the REACH Authorisation of customers' uses of products that contain European Authorisation list (Annex XIV) substances.

It is the responsibility of our customers to check the necessity of application of REACH Authorisation, and any other relevant authorisations, for their intended uses.

Platform Microplate

Properties

Storage instructions Store at +4°C. Please refer to protocols.

Components	1 x 96 tests
1000X IRDye-labeled Secondary Antibodies	1 x 24µl
100X Anti- Histone H3 (pSer10) Primary Antibody	1 x 120µl
100X Anti-Cdk2 (pTyr15) Primary Antibody	1 x 120µl
100X Triton X-100	1 x 500µl
10X Blocking Solution	1 x 10ml
10X Phosphate Buffered Saline	1 x 100ml
400X Tween-20	1 x 2ml
1X Janus Green Stain	1 x 17ml

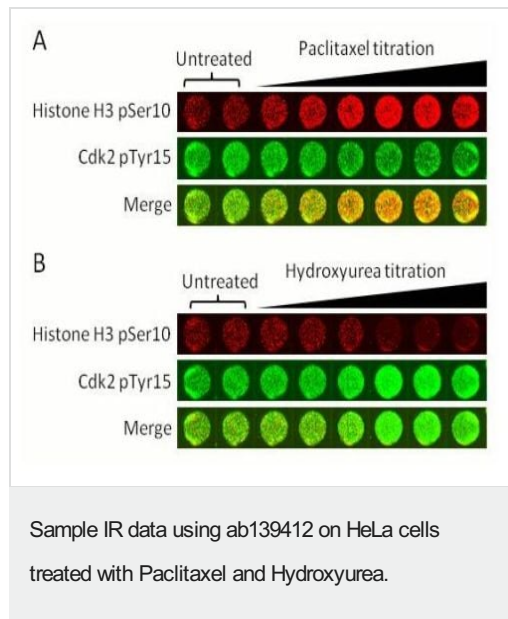
Relevance Cdk2 is a member of the Ser/Thr protein kinase family. This protein kinase is highly similar to the gene products of *S. cerevisiae* cdc28, and *S. pombe* cdc2. It is a catalytic subunit of the cyclin-dependent protein kinase complex, whose activity is restricted to the G1-S phase, and essential for cell cycle G1/S phase transition. This protein associates with and regulated by the regulatory subunits of the complex including cyclin A or E, CDK inhibitor p21Cip1 (CDKN1A) and p27Kip1 (CDKN1B). Its activity is also regulated by its protein phosphorylation. Two alternatively spliced

variants and multiple transcription initiation sites of this gene have been reported.

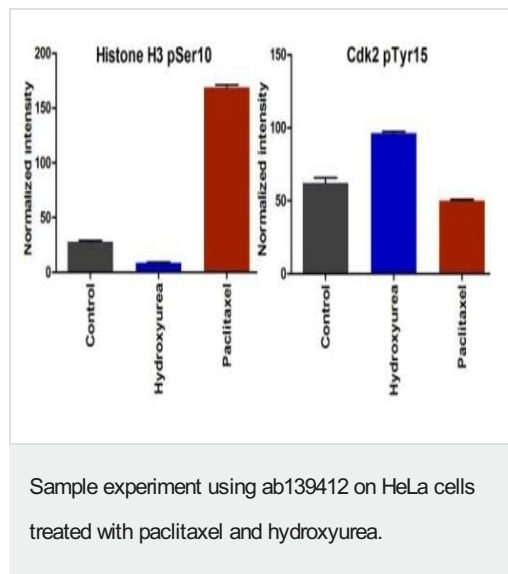
Cellular localization

Cytoplasmic and Nuclear

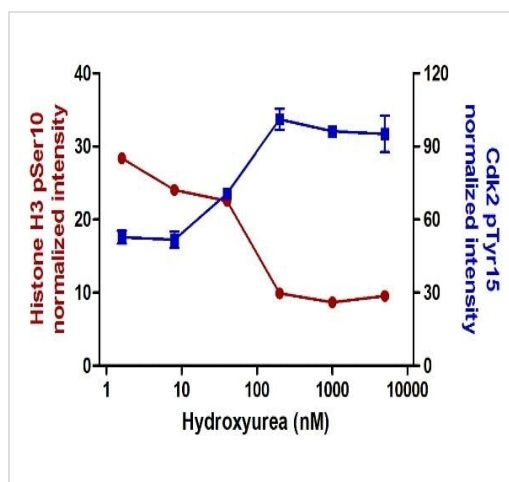
Images



HeLa cells were treated for 24h with varying concentrations of paclitaxel (0.26 – 2000 μ M). Histone H3 pSer10 (red) intensity increases with increasing paclitaxel whereas Cdk2 pTyr15 (green) intensity decreases. This is the expected result for paclitaxel treatment: mitotic arrest. (B) HeLa cells were treated for 24h with varying concentrations of hydroxyurea (0.002 – 5 mM). Histone H3 pSer10 (red) intensity decreases with increasing paclitaxel whereas Cdk2 pTyr15 (green) intensity increases. This is the expected result for hydroxyurea treatment: G1/S-phase arrest.

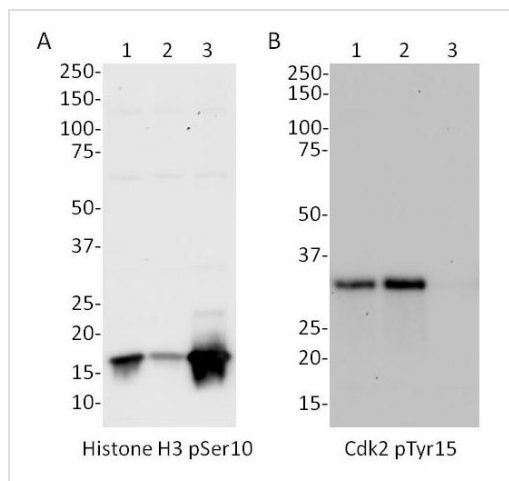


Quantification of the data shown in Image 1. Data shown is for 24 hour treatment with 1 mM hydroxyurea, 333 nM paclitaxel and untreated (Control).



Cdk2 pTyr15 intensity increases with Hydroxyurea treatment dose whereas Histone H3 pSer10 intensity decreases.

Sample data using ab139412 on HeLa cells treated with a titration of hydroxyurea.



Whole cell lysates from HeLa cells were analyzed by western blot with the primary antibodies used in this assay kit. (A) Histone H3 pSer10 antibody: untreated (lane 1), hydroxyurea = G1/S arrest (lane 2), paclitaxel = G2/M arrest (lane 3). (B) Cdk2 pTyr15 antibody: untreated (lane 1), thymidine = G1/S arrest (lane 2), nocodazole = G2/M arrest (lane 3).

Antibody specificity demonstrated by Western Blot Analysis.

Please note: All products are "FOR RESEARCH USE ONLY. NOT FOR USE IN DIAGNOSTIC PROCEDURES"

Our Abpromise to you: Quality guaranteed and expert technical support

- Replacement or refund for products not performing as stated on the datasheet
- Valid for 12 months from date of delivery
- Response to your inquiry within 24 hours
- We provide support in Chinese, English, French, German, Japanese and Spanish
- Extensive multi-media technical resources to help you
- We investigate all quality concerns to ensure our products perform to the highest standards

If the product does not perform as described on this datasheet, we will offer a refund or replacement. For full details of the Abpromise, please visit <https://www.abcam.com/abpromise> or contact our technical team.

Terms and conditions

- Guarantee only valid for products bought direct from Abcam or one of our authorized distributors