

Human Cyclin E1 ELISA Kit ab231929

Recombinant SimpleStep ELISA®

6 Images

Overview

Product name	Human Cyclin E1 ELISA Kit				
Detection method	Colorimetric				
Precision	Intra-assay				
	Sample	n	Mean	SD	CV%
	Cell extract	5			2.1%
	Inter-assay				
	Sample	n	Mean	SD	CV%
	Cell extract	3			12.4%
Sample type	Cell culture extracts, Tissue Extracts				
Assay type	Sandwich (quantitative)				
Sensitivity	1.2 ng/ml				
Range	3.91 ng/ml - 250 ng/ml				
Recovery	Sample specific recovery				
	Sample type		Average %		Range
	Cell culture extracts		104		98% - 108%
	Tissue Extracts		101		98% - 102%
Assay time	1h 30m				
Assay duration	One step assay				
Species reactivity	Reacts with: Human				
Product overview	Human Cyclin E1 ELISA Kit (ab231929) is a single-wash 90 min sandwich ELISA designed for the quantitative measurement of Cyclin E1 protein in cell culture extracts and tissue extracts. It uses our proprietary SimpleStep ELISA® technology. Quantitate Human Cyclin E1 with 1.2 ng/ml sensitivity.				

SimpleStep ELISA® technology employs capture antibodies conjugated to an affinity tag that is recognized by the monoclonal antibody used to coat our SimpleStep ELISA® plates. This approach to sandwich ELISA allows the formation of the antibody-analyte sandwich complex in a single step, significantly reducing assay time. See the SimpleStep ELISA® protocol summary in the image section for further details. Our SimpleStep ELISA® technology provides several benefits:

- Single-wash protocol reduces assay time to 90 minutes or less
- High sensitivity, specificity and reproducibility from superior antibodies
- Fully validated in biological samples
- 96-wells plate breakable into 12 x 8 wells strips

A 384-well SimpleStep ELISA® microplate ([ab203359](#)) is available to use as an alternative to the 96-well microplate provided with SimpleStep ELISA® kits.

## Notes

The standard is affinity purified.

Abcam has not and does not intend to apply for the REACH Authorisation of customers' uses of products that contain European Authorisation list (Annex XIV) substances.

It is the responsibility of our customers to check the necessity of application of REACH Authorisation, and any other relevant authorisations, for their intended uses.

## Platform

Pre-coated microplate (12 x 8 well strips)

## Properties

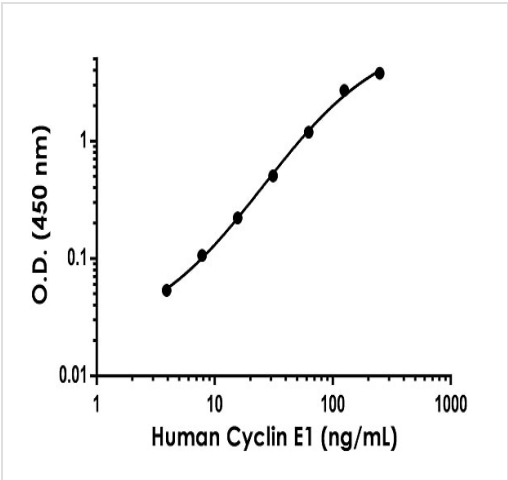
**Storage instructions** Store at +4°C. Please refer to protocols.

Components	1 x 96 tests
10X Human Cyclin E1 Capture Antibody	1 x 600µl
10X Human Cyclin E1 Detector Antibody	1 x 600µl
10X Wash Buffer PT (ab206977)	1 x 20ml
50X Cell Extraction Enhancer Solution (ab193971)	1 x 1ml
5X Cell Extraction Buffer PTR (ab193970)	1 x 10ml
Antibody Diluent 4BI	1 x 6ml
Human Cyclin E1 Lyophilized Recombinant Protein	2 vials
Plate Seals	1 unit
Sample Diluent NS (ab193972)	1 x 12ml
SimpleStep Pre-Coated 96-Well Microplate (ab206978)	1 unit
Stop Solution	1 x 12ml

Components	1 x 96 tests
TMB Development Solution	1 x 12ml

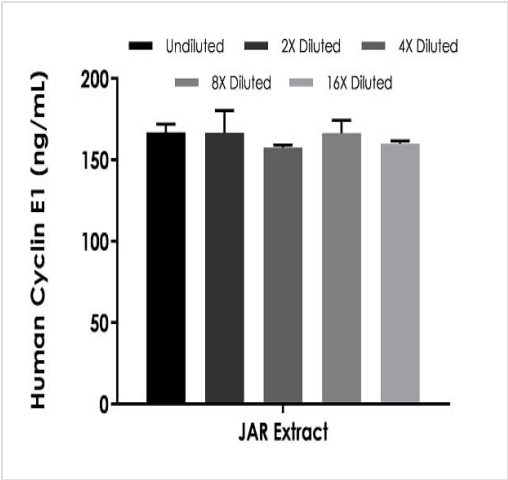
Function	Essential for the control of the cell cycle at the G1/S (start) transition.
Tissue specificity	Highly expressed in testis and placenta. Low levels in bronchial epithelial cells.
Sequence similarities	Belongs to the cyclin family. Cyclin E subfamily.
Post-translational modifications	Phosphorylation of Thr-395 by GSK3 and of Ser-399 by CDK2 accelerates degradation via the ubiquitin proteasome pathway. Phosphorylated upon DNA damage, probably by ATM or ATR.
Cellular localization	Nucleus.

Images



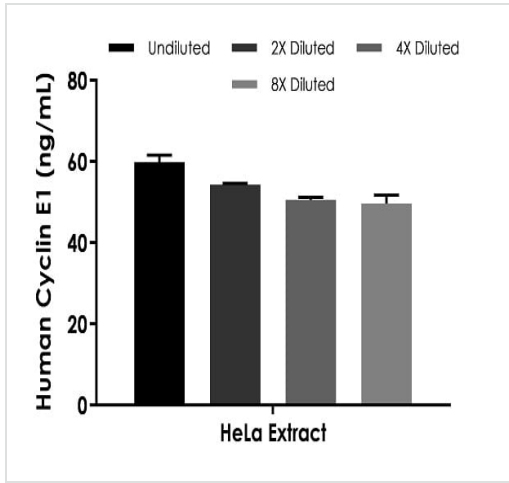
Example of human Cyclin E1 standard curve in 1X Cell Extraction Buffer PTR

Background-subtracted data values (mean +/- SD) are graphed.



Interpolated concentrations of native Cyclin E1 in JAR cell extract based on a 1,000 µg/mL extract load

The concentrations of Cyclin E1 were measured in duplicate and interpolated from the Cyclin E1 standard curve and corrected for sample dilution. The interpolated dilution factor corrected values are plotted (mean +/- SD, n=2). The mean Cyclin E1 concentration was determined to be 163 ng/mL in JAR cell extract.



Interpolated concentrations of native Cyclin E1 in HeLa cell extract based on a 1,500 µg/mL extract load

The concentrations of Cyclin E1 were measured in duplicate and interpolated from the Cyclin E1 standard curve and corrected for sample dilution. The interpolated dilution factor corrected values are plotted (mean +/- SD, n=2). The mean Cyclin E1 concentration was determined to be 54 ng/mL in HeLa cell extract.

Powered by recombinant antibodies

**Research with confidence**  
Consistent and reproducible results

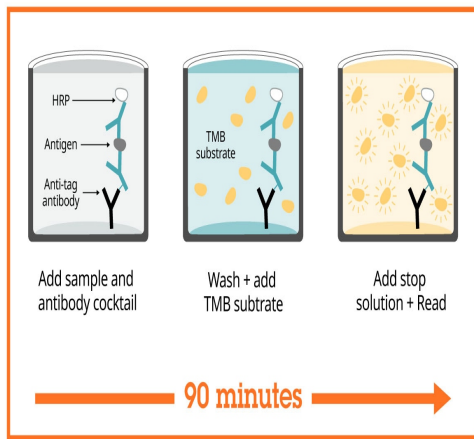
**Long-term and scalable supply**  
Recombinant technology

**Success from the first experiment**  
Confirmed specificity

**Ethical standards compliant**  
Animal-free production

Sandwich ELISA - Human Cyclin E1 ELISA Kit (ab231929)

To learn more about the advantages of recombinant antibodies see [here](#).



Sandwich ELISA - Human Cyclin E1 ELISA Kit  
(ab231929)

SimpleStep ELISA technology allows the formation of the antibody-antigen complex in one single step, reducing assay time to 90 minutes. Add samples or standards and antibody mix to wells all at once, incubate, wash, and add your final substrate. See protocol for a detailed step-by-step guide.

#### Get more done with SimpleStep ELISA



**Easy to use**  
Single-wash 90-minute protocol



**Flexible**  
Matched antibody pairs available



**Precision antibodies**  
High sensitivity, specificity and reproducibility



**Scalable**  
Now in 10-pack and 384-well formats

Sandwich ELISA - Human Cyclin E1 ELISA Kit  
(ab231929)

To learn more about the advantages of SimpleStep ELISA® kits see [here](#).

**Please note:** All products are "FOR RESEARCH USE ONLY. NOT FOR USE IN DIAGNOSTIC PROCEDURES"

#### Our Abpromise to you: Quality guaranteed and expert technical support

- Replacement or refund for products not performing as stated on the datasheet
- Valid for 12 months from date of delivery
- Response to your inquiry within 24 hours
- We provide support in Chinese, English, French, German, Japanese and Spanish
- Extensive multi-media technical resources to help you
- We investigate all quality concerns to ensure our products perform to the highest standards

If the product does not perform as described on this datasheet, we will offer a refund or replacement. For full details of the Abpromise, please visit <https://www.abcam.com/abpromise> or contact our technical team.

## Terms and conditions

---

- Guarantee only valid for products bought direct from Abcam or one of our authorized distributors