

### Human FCN1/M-Ficolin ELISA Kit ab213777

1 Image

#### Overview

**Product name** Human FCN1/M-Ficolin ELISA Kit

**Detection method** Colorimetric

#### Precision

Intra-assay

Sample	n	Mean	SD	CV%
1	16	1.355ng/ml	0.088	= 6.5%
2	16	8.333ng/ml	0.483	= 5.8%
3	16	19.299ng/ml	1.042	= 5.4%

Inter-assay

Sample	n	Mean	SD	CV%
1	24	1.265ng/ml	0.095	= 7%
2	24	8.931ng/ml	0.544	= 6.1%
3	24	19.839ng/ml	1.091	= 5.5%

**Sample type** Cell culture supernatant, Serum, Hep Plasma

**Assay type** Sandwich (quantitative)

**Sensitivity** < 20 pg/ml

**Range** 0.78 ng/ml - 50 ng/ml

**Assay time** 3h 30m

**Assay duration** Multiple steps standard assay

**Species reactivity** **Reacts with:** Human

#### Product overview

The Human FCN1/M-Ficolin Enzyme-Linked Immunosorbent Assay (ELISA) kit (ab213777) is designed for the quantitative measurement of Human FCN1/M-Ficolin in cell culture supernatants, serum and plasma (heparin).

The ELISA kit is based on standard sandwich enzyme-linked immune-sorbent assay technology.

A monoclonal antibody from mouse specific for FCN1/M-Ficolin has been pre-coated onto 96-well plates. Standards (Expression system for standard: NSO; Immunogen sequence: A30-A326) and test samples are added to the wells, a biotinylated detection polyclonal antibody from goat specific for FCN1/M-Ficolin is added subsequently and then followed by washing with PBS or TBS buffer. Avidin-Biotin-Peroxidase Complex is added and unbound conjugates are washed away with PBS or TBS buffer. HRP substrate TMB is used to visualize HRP enzymatic reaction. TMB is catalyzed by HRP to produce a blue color product that changed into yellow after adding acidic stop solution. The density of yellow is proportional to the Human FCN1/M-Ficolin amount of sample captured in plate.

**Notes** FCN1/M-Ficolin, also commonly termed M-ficolin is a protein that in humans is encoded by the FCN1 gene. It is mapped to 9q34.3. The ficolin family of proteins are characterized by the presence of a leader peptide, a short N-terminal segment, followed by a collagen-like region, and a C-terminal fibrinogen-like domain. Ficolins have a crucial role in defense against pneumococcal infection through the lectin complement pathway. FCN1/M-Ficolin is predominantly expressed in the peripheral blood leukocytes, and has been postulated to function as a plasma protein with elastin-binding activity.

**Platform** Pre-coated microplate (12 x 8 well strips)

**Properties**

**Storage instructions** Store at -20°C. Please refer to protocols.

Components	Identifier	1 x 96 tests
ABC Diluent Buffer	Blue Cap	1 x 12ml
Adhesive Plate Seal		4 units
Antibody Diluent Buffer	Green Cap	1 x 12ml
Anti-Human FCN1/M-Ficolin coated Microplate (12 x 8 wells)		1 unit
Avidin-Biotin-Peroxidase Complex (ABC)		1 x 100µl
Biotinylated anti- Human FCN1/M-Ficolin antibody		1 x 100µl
Lyophilized recombinant Human FCN1/M-Ficolin standard		2 vials
Sample Diluent Buffer	Green Cap	1 x 30ml
TMB Color Developing Agent	Black Cap	1 x 10ml
TMB Stop Solution	Yellow Cap	1 x 10ml
Wash Buffer (25X)		1 x 20ml

**Function** Involved in serum exerting lectin activity. Binds GlcNAc.

**Tissue specificity** Peripheral blood leukocytes. Also detected in spleen, lung, and thymus, may be due to the presence of tissue macrophages or trapped blood in these tissues. Not detected on lymphocytes and granulocytes.

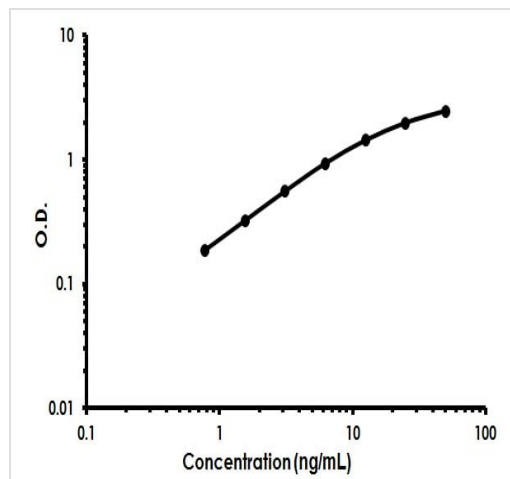
### Sequence similarities

Belongs to the ficolin lectin family.  
Contains 1 collagen-like domain.  
Contains 1 fibrinogen C-terminal domain.

### Cellular localization

Secreted. Found on the monocyte surface.

### Images



Human FCN1/M-Ficolin ELISA Kit (ab213777) Standard Curve.

Human FCN1/M-Ficolin ELISA Kit (ab213777)  
Standard Curve.

**Please note:** All products are "FOR RESEARCH USE ONLY. NOT FOR USE IN DIAGNOSTIC PROCEDURES"

### Our Abpromise to you: Quality guaranteed and expert technical support

- Replacement or refund for products not performing as stated on the datasheet
- Valid for 12 months from date of delivery
- Response to your inquiry within 24 hours
- We provide support in Chinese, English, French, German, Japanese and Spanish
- Extensive multi-media technical resources to help you
- We investigate all quality concerns to ensure our products perform to the highest standards

If the product does not perform as described on this datasheet, we will offer a refund or replacement. For full details of the Abpromise, please visit <https://www.abcam.com/abpromise> or contact our technical team.

### Terms and conditions

- Guarantee only valid for products bought direct from Abcam or one of our authorized distributors