



Product datasheet

Human Galectin-1 ELISA Kit ab260053

Recombinant SimpleStep ELISA

1 References 6 Images

Overview

Product name	Human Galectin-1 ELISA Kit				
Detection method	Colorimetric				
Precision	Intra-assay				
	Sample	n	Mean	SD	CV%
	Serum	8			3.2%
	Inter-assay				
	Sample	n	Mean	SD	CV%
	Serum	4			5.6%
Sample type	Serum, Cell culture media, Hep Plasma, EDTA Plasma				
Assay type	Sandwich (quantitative)				
Sensitivity	0.36 ng/ml				
Range	0.8 ng/ml - 50 ng/ml				
Recovery	Sample specific recovery				
	Sample type		Average %		Range
	Serum		97		88% - 102%
	Cell culture media		107		98% - 114%
	Hep Plasma		110		102% - 119%
	EDTA Plasma		103		94% - 108%
Assay time	1h 30m				
Assay duration	One step assay				
Species reactivity	Reacts with: Mouse, Rat, Cow, Human				

Product overview

Human Galectin-1 ELISA Kit (ab260053) is a single-wash 90 min sandwich ELISA designed for the quantitative measurement of Galectin-1 protein in cell culture media, edta plasma, hep plasma, and serum. It uses our proprietary SimpleStep ELISA® technology. Quantitate Human Galectin-1 with 0.36 ng/ml sensitivity.

SimpleStep ELISA® technology employs capture antibodies conjugated to an affinity tag that is recognized by the monoclonal antibody used to coat our SimpleStep ELISA® plates. This approach to sandwich ELISA allows the formation of the antibody-analyte sandwich complex in a single step, significantly reducing assay time. See the SimpleStep ELISA® protocol summary in the image section for further details. Our SimpleStep ELISA® technology provides several benefits:

- Single-wash protocol reduces assay time to 90 minutes or less
- High sensitivity, specificity and reproducibility from superior antibodies
- Fully validated in biological samples
- 96-wells plate breakable into 12 x 8 wells strips

A 384-well SimpleStep ELISA® microplate ([ab203359](#)) is available to use as an alternative to the 96-well microplate provided with SimpleStep ELISA® kits.

Notes

Galectin-1, also known as 14 kDa lectin, galaptin, and lectin galactoside-binding soluble 1, is a β -galactoside binding lectin encoded by the gene LGALS1. Galectin-1 is a 134 amino acid non-glycosylated secreted protein that forms a non-covalently linked homodimer. Galectin-1 is expressed in a wide range of tissues and has various intra- and extra-cellular functions, where generally it is a modulator of immune responses. Galectin-1 may act as an autocrine negative growth factor that regulates cell proliferation.

Platform

Pre-coated microplate (12 x 8 well strips)

Properties

Storage instructions

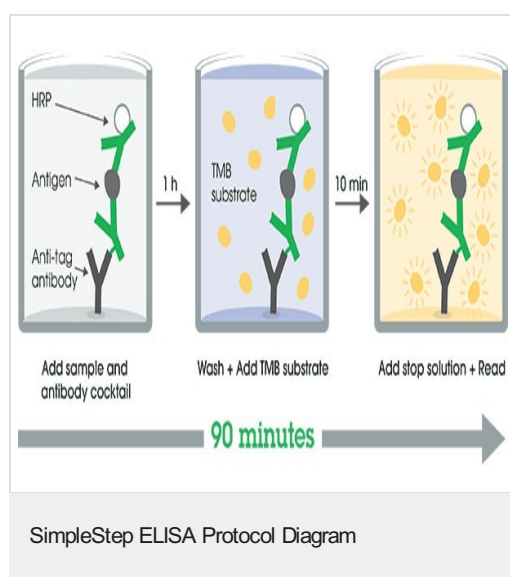
Store at +4°C. Please refer to protocols.

Components	1 x 96 tests
10X Human Galectin-1 Capture Antibody	1 x 600µl
10X Human Galectin-1 Detector Antibody	1 x 600µl
10X Wash Buffer PT (ab206977)	1 x 20ml
Antibody Diluent 4BR	1 x 6ml
Human Galectin-1 Lyophilized Recombinant Protein	2 vials
Plate Seals	1 unit
Sample Diluent NS (ab193972)	1 x 50ml
SimpleStep Pre-Coated 96-Well Microplate (ab206978)	1 unit

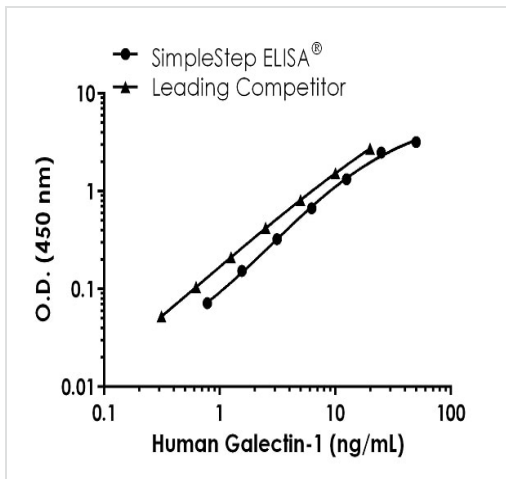
Components	1 x 96 tests
Stop Solution	1 x 12ml
TMB Development Solution	1 x 12ml

Function	May regulate apoptosis, cell proliferation and cell differentiation. Binds beta-galactoside and a wide array of complex carbohydrates. Inhibits CD45 protein phosphatase activity and therefore the dephosphorylation of Lyn kinase.
Tissue specificity	Expressed in placenta, maternal decidua and fetal membranes. Within placenta, expressed in trophoblasts, stromal cells, villous endothelium, syncytiotrophoblast apical membrane and villous stroma. Within fetal membranes, expressed in amnion, chorioamniotic mesenchyma and chorion (at protein level). Expressed in cardiac, smooth, and skeletal muscle, neurons, thymus, kidney and hematopoietic cells.
Sequence similarities	Contains 1 galectin domain.
Cellular localization	Secreted > extracellular space > extracellular matrix.

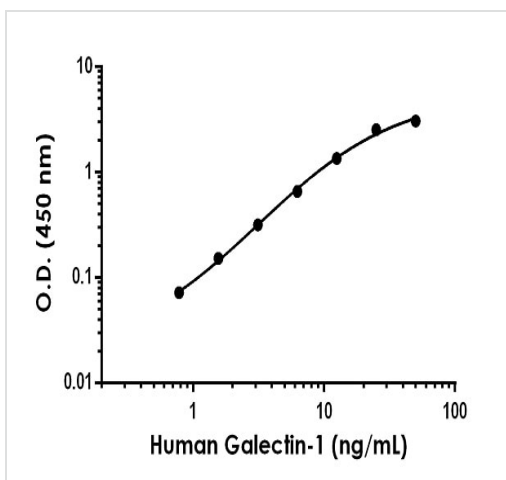
Images



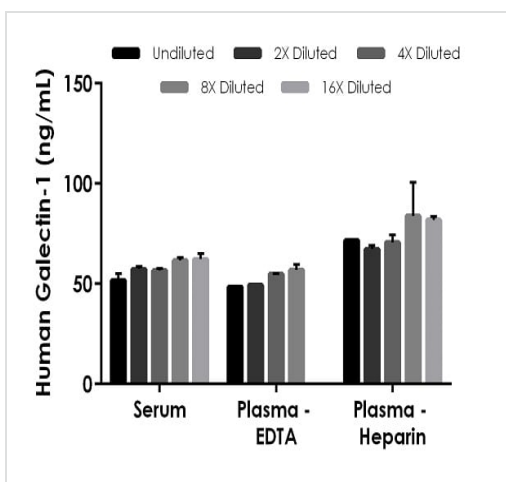
SimpleStep ELISA technology allows the formation of the antibody-antigen complex in one single step, reducing assay time to 90 minutes. Add samples or standards and antibody mix to wells all at once, incubate, wash, and add your final substrate. See protocol for a detailed step-by-step guide.



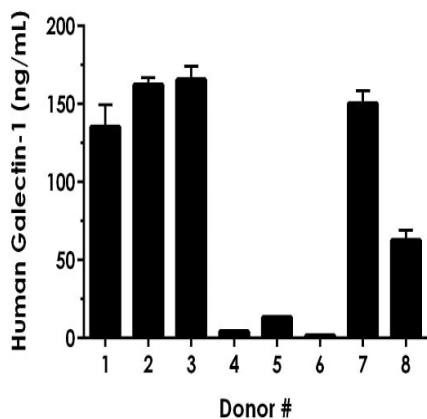
Human Galectin-1 standard curve comparison



Example of human Galectin-1 standard curve in Sample Diluent NS.



Interpolated concentrations of native Galectin-1 in human serum and plasma samples.



Serum from eight individual healthy human donors was measured in duplicate.

Interpolated dilution factor corrected values are plotted (mean \pm SD, $n=2$). The mean Galectin-1 concentration was determined to be 99.2 ng/mL with a range of 4.3 – 165.5 ng/mL.

Powered by
recombinant antibodies



Research with confidence
Consistent and reproducible results



Long-term and scalable supply
Recombinant technology



Success from the first experiment
Confirmed specificity



Ethical standards compliant
Animal-free production

Sandwich ELISA - Human Galectin-1 ELISA Kit
(ab260053)

To learn more about the advantages of recombinant antibodies see [here](#).

Please note: All products are "FOR RESEARCH USE ONLY. NOT FOR USE IN DIAGNOSTIC PROCEDURES"

Our Abpromise to you: Quality guaranteed and expert technical support

- Replacement or refund for products not performing as stated on the datasheet
- Valid for 12 months from date of delivery
- Response to your inquiry within 24 hours
- We provide support in Chinese, English, French, German, Japanese and Spanish
- Extensive multi-media technical resources to help you
- We investigate all quality concerns to ensure our products perform to the highest standards

If the product does not perform as described on this datasheet, we will offer a refund or replacement. For full details of the Abpromise, please visit <https://www.abcam.com/abpromise> or contact our technical team.

Terms and conditions

- Guarantee only valid for products bought direct from Abcam or one of our authorized distributors