

Human GATA3 ELISA Kit ab230939

Recombinant SimpleStep ELISA®

5 Images

Overview

Product name	Human GATA3 ELISA Kit				
Detection method	Colorimetric				
Precision	Intra-assay				
	Sample	n	Mean	SD	CV%
	T47D Cells	9			3.2%
	Inter-assay				
	Sample	n	Mean	SD	CV%
	T47D Cells	3			4.39%
Sample type	Cell culture extracts				
Assay type	Sandwich (quantitative)				
Sensitivity	7.29 pg/ml				
Range	62.5 pg/ml - 4000 pg/ml				
Recovery	Sample specific recovery				
	Sample type	Average %		Range	
	Cell culture extracts	107		106% - 108%	
Assay time	1h 30m				
Assay duration	One step assay				
Species reactivity	Reacts with: Human				
Product overview	Human GATA3 ELISA Kit (ab230939) is a single-wash 90 min sandwich ELISA designed for the quantitative measurement of GATA3 protein in cell culture extracts. It uses our proprietary SimpleStep ELISA® technology. Quantitate Human GATA3 with 7.29 pg/ml sensitivity.				

SimpleStep ELISA® technology employs capture antibodies conjugated to an affinity tag that is recognized by the monoclonal antibody used to coat our SimpleStep ELISA® plates. This

approach to sandwich ELISA allows the formation of the antibody-analyte sandwich complex in a single step, significantly reducing assay time. See the SimpleStep ELISA® protocol summary in the image section for further details. Our SimpleStep ELISA® technology provides several benefits:

- Single-wash protocol reduces assay time to 90 minutes or less
- High sensitivity, specificity and reproducibility from superior antibodies
- Fully validated in biological samples
- 96-wells plate breakable into 12 x 8 wells strips

A 384-well SimpleStep ELISA® microplate (**ab203359**) is available to use as an alternative to the 96-well microplate provided with SimpleStep ELISA® kits.

**Notes** Abcam has not and does not intend to apply for the REACH Authorisation of customers' uses of products that contain European Authorisation list (Annex XIV) substances. It is the responsibility of our customers to check the necessity of application of REACH Authorisation, and any other relevant authorisations, for their intended uses.

**Platform** Pre-coated microplate (12 x 8 well strips)

## Properties

**Storage instructions** Store at +4°C. Please refer to protocols.

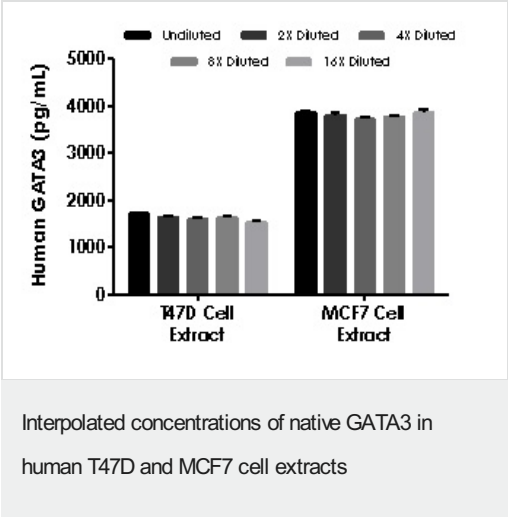
Components	1 x 96 tests
10X Human GATA3 Capture Antibody	1 x 600µl
10X Human GATA3 Detector Antibody	1 x 600µl
10X Wash Buffer PT (ab206977)	1 x 20ml
5X Cell Extraction Buffer PTR (ab193970)	1 x 10ml
Antibody Diluent CPR2	1 x 6ml
Human GATA3 Lyophilized Recombinant Protein	2 vials
Plate Seals	1 unit
Sample Diluent NS (ab193972)	1 x 12ml
SimpleStep Pre-Coated 96-Well Microplate (ab206978)	1 unit
Stop Solution	1 x 12ml
TMB Development Solution	1 x 12ml

**Function** Transcriptional activator which binds to the enhancer of the T-cell receptor alpha and delta genes. Binds to the consensus sequence 5'-AGATAG-3'.

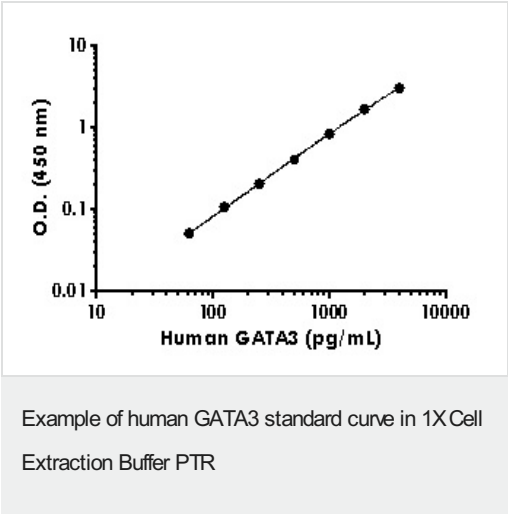
**Tissue specificity** T-cells and endothelial cells.

Involvement in disease	Defects in GATA3 are the cause of hypoparathyroidism with sensorineural deafness and renal dysplasia (HDR) [MIM:146255]; also known as Barakat syndrome.
Sequence similarities	Contains 2 GATA-type zinc fingers.
Cellular localization	Nucleus.

Images



The concentrations of GATA3 were measured in duplicates, interpolated from the GATA3 standard curves and corrected for sample dilution. Undiluted samples are as follows: T47D cell extract 50 µg/mL and MCF7 cell extract 187.5 µg/mL. The interpolated dilution factor corrected values are plotted (mean +/- SD, n=2). The mean GATA3 concentration in the undiluted samples was determined to be 1,621 µg/mL in T47D cell extract and 3,807 µg/mL in MCF7 cell extract.



The GATA3 standard curve was prepared as described in Section 10. Raw data values are shown in the table. Background-subtracted data values (mean +/- SD) are graphed.

Powered by  
recombinant antibodies



**Research with confidence**  
Consistent and reproducible results



**Long-term and scalable supply**  
Recombinant technology



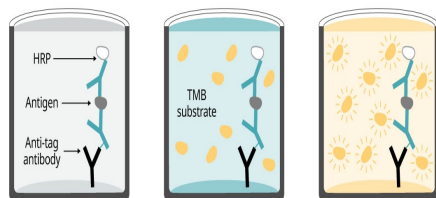
**Success from the first experiment**  
Confirmed specificity



**Ethical standards compliant**  
Animal-free production

Sandwich ELISA - Human GATA3 ELISA Kit  
(ab230939)

To learn more about the advantages of recombinant antibodies see [here](#).



Add sample and  
antibody cocktail

Wash + add  
TMB substrate

Add stop  
solution + Read

**90 minutes**

SimpleStep ELISA technology allows the formation of the antibody-antigen complex in one single step, reducing assay time to 90 minutes. Add samples or standards and antibody mix to wells all at once, incubate, wash, and add your final substrate. See protocol for a detailed step-by-step guide.

Sandwich ELISA - Human GATA3 ELISA Kit  
(ab230939)

**Get more done with  
SimpleStep ELISA**



**Easy to use**  
Single-wash 90-minute protocol



**Flexible**  
Matched antibody pairs available



**Precision antibodies**  
High sensitivity, specificity and reproducibility



**Scalable**  
Now in 10-pack and 384-well formats

Sandwich ELISA - Human GATA3 ELISA Kit  
(ab230939)

To learn more about the advantages of SimpleStep ELISA<sup>®</sup> kits see [here](#).

**Please note:** All products are "FOR RESEARCH USE ONLY. NOT FOR USE IN DIAGNOSTIC PROCEDURES"

### **Our Abpromise to you: Quality guaranteed and expert technical support**

---

- Replacement or refund for products not performing as stated on the datasheet
- Valid for 12 months from date of delivery
- Response to your inquiry within 24 hours
  
- We provide support in Chinese, English, French, German, Japanese and Spanish
- Extensive multi-media technical resources to help you
- We investigate all quality concerns to ensure our products perform to the highest standards

If the product does not perform as described on this datasheet, we will offer a refund or replacement. For full details of the Abpromise, please visit <https://www.abcam.com/abpromise> or contact our technical team.

### **Terms and conditions**

---

- Guarantee only valid for products bought direct from Abcam or one of our authorized distributors