

Human Hemopexin ELISA Kit (HPX) ab108860

[2 References](#) [2 Images](#)

Overview

Product name	Human Hemopexin ELISA Kit (HPX)			
Detection method	Colorimetric			
Precision	Intra-assay			
	Sample	n	Mean	SD
	Overall			5.3%
	Inter-assay			
	Sample	n	Mean	SD
	Overall			9.5%
Sample type	Cell culture supernatant, Saliva, Milk, Urine, Cerebral Spinal Fluid			
Assay type	Sandwich (quantitative)			
Sensitivity	= 1.3 ng/ml			
Range	12.5 ng/ml - 200 ng/ml			
Recovery	98 %			
Assay time	3h 30m			
Assay duration	Multiple steps standard assay			
Species reactivity	Reacts with: Human			
Product overview	Abcam's Hemopexin (HPX) Human <i>in vitro</i> ELISA (Enzyme-Linked Immunosorbent Assay) kit is designed for the quantitative measurement of Hemopexin levels in Human cell culture supernatants, milk, saliva and urine.			

A Hemopexin specific antibody has been precoated onto 96-well plates and blocked. Standards or test samples are added to the wells and subsequently a Hemopexin specific biotinylated detection antibody is added and then followed by washing with wash buffer. Streptavidin-Peroxidase Conjugate is added and unbound conjugates are washed away with wash buffer. TMB is then used to visualize Streptavidin-Peroxidase enzymatic reaction. TMB is catalyzed by Streptavidin-Peroxidase to produce a blue color product that changes into yellow after adding acidic stop solution. The density of yellow coloration is directly proportional to the amount of Hemopexin captured in plate.

The entire kit may be stored at -20°C for long term storage before reconstitution - Avoid repeated freeze-thaw cycles.

Platform Microplate

Properties

Storage instructions Store at -20°C. Please refer to protocols.

Components	1 x 96 tests
100X Streptavidin-Peroxidase Conjugate	1 x 80µl
10X Diluent N Concentrate	1 x 30ml
20X Wash Buffer Concentrate	2 x 30ml
50X Biotinylated Human Hemopexin Antibody	1 x 120µl
Chromogen Substrate	1 x 7ml
Hemopexin Microplate (12 x 8 well strips)	1 unit
Hemopexin Standard	1 vial
Sealing Tapes	3 units
Stop Solution	1 x 11ml

Function Binds heme and transports it to the liver for breakdown and iron recovery, after which the free hemopexin returns to the circulation.

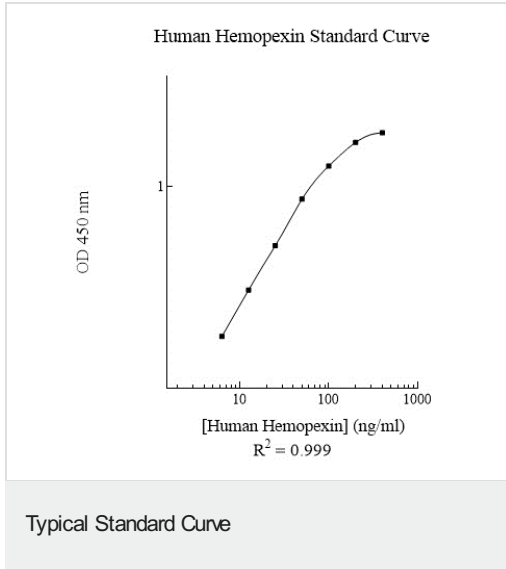
Tissue specificity Expressed by the liver and secreted in plasma.

Sequence similarities Belongs to the hemopexin family.
Contains 5 hemopexin-like domains.

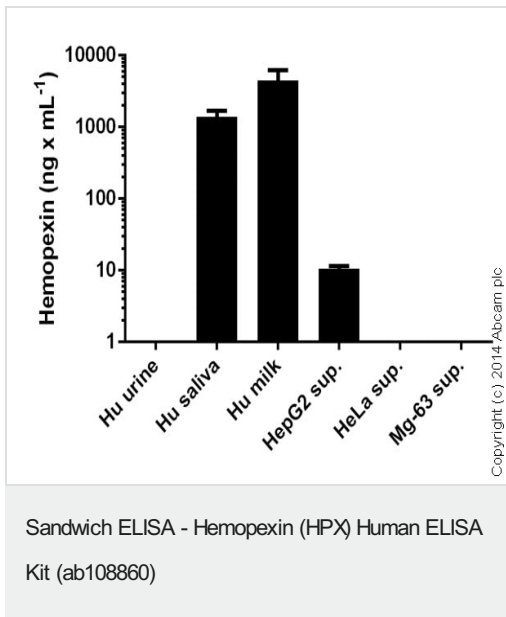
Post-translational modifications N- and O-glycosylated. O-glycosylated with core 1 or possibly core 8 glycans.

Cellular localization Secreted.

Images



Representative Standard Curve using ab108860.



Hemopexin measured in biological fluids and cell culture supernatants showing quantity (ng) per mL of tested sample. Human saliva diluted 60-120 fold. Human milk diluted 300-600 fold. Human urine diluted 10 fold - below detection. Cell supernatants tested neat.

Please note: All products are "FOR RESEARCH USE ONLY. NOT FOR USE IN DIAGNOSTIC PROCEDURES"

Our Abpromise to you: Quality guaranteed and expert technical support

- Replacement or refund for products not performing as stated on the datasheet
- Valid for 12 months from date of delivery
- Response to your inquiry within 24 hours

- We provide support in Chinese, English, French, German, Japanese and Spanish
- Extensive multi-media technical resources to help you
- We investigate all quality concerns to ensure our products perform to the highest standards

If the product does not perform as described on this datasheet, we will offer a refund or replacement. For full details of the Abpromise, please visit <https://www.abcam.com/abpromise> or contact our technical team.

Terms and conditions

- Guarantee only valid for products bought direct from Abcam or one of our authorized distributors