

Human IL-12 p70 ELISA Kit, Fluorescent ab229515

Recombinant CatchPoint SimpleStep ELISA

4 Images

Overview

Product name Human IL-12 p70 ELISA Kit, Fluorescent

Detection method Fluorescent

Precision Intra-assay

Sample	n	Mean	SD	CV%
Spiked serum	5			7%

Inter-assay

Sample	n	Mean	SD	CV%
Spiked serum	3			5.2%

Sample type Cell culture supernatant, Serum, Hep Plasma, EDTA Plasma, Cit plasma

Assay type Sandwich (quantitative)

Sensitivity 1 pg/ml

Range 3.9 pg/ml - 8000 pg/ml

Recovery Sample specific recovery

Sample type	Average %	Range
Serum	96	93% - 101%
Cell culture media	101	94% - 110%
Hep Plasma	85	80% - 89%
EDTA Plasma	99	97% - 101%
Cit plasma	93	92% - 94%

Assay time 1h 30m

Assay duration One step assay

**Species reactivity****Reacts with:** Human**Product overview**

IL-12 p70 *in vitro* CatchPoint SimpleStep ELISA (Enzyme-Linked Immunosorbent Assay) kit is designed for the quantitative measurement of IL-12 p70 protein in human serum, plasma and cell culture supernatant.

This CatchPoint SimpleStep ELISA kit has been **optimized for Molecular Devices Microplate Readers**. Click [here](#) for a list of recommended Microplate Readers.

If using a Molecular Devices' plate reader supported by SoftMax® Pro software, a preconfigured protocol for these CatchPoint SimpleStep ELISA Kits is available with all the protocol and analysis settings at [www.softmaxpro.org](http://www.softmaxpro.org).

The CatchPoint SimpleStep ELISA employs an affinity tag labeled capture antibody and a reporter conjugated detector antibody which immunocapture the sample analyte in solution. This entire complex (capture antibody/analyte/detector antibody) is in turn immobilized via immunoaffinity of an anti-tag antibody coating the well. To perform the assay, samples or standards are added to the wells, followed by the antibody mix. After incubation, the wells are washed to remove unbound material. CatchPoint HRP Development Solution containing the Stoplight Red Substrate is added. During incubation, the substrate is catalyzed by HRP generating a fluorescent product. Signal is generated proportionally to the amount of bound analyte and the intensity is measured in a fluorescence plate reader at 530/570/590 nm Excitation/Cutoff/Emission.

**Notes**

IL-12 p70 is a 70kDa cytokine heterodimer made of 2 subunits IL-12A (p35) and IL-12B (p40). This kit recognizes specifically the IL-12 total heterodimer protein. IL-12 p70 is produced by active antigen-presenting cells and promotes the development of Th1 and induces IFN $\gamma$ .

**Platform**

Pre-coated microplate (12 x 8 well strips)

**Properties****Storage instructions**

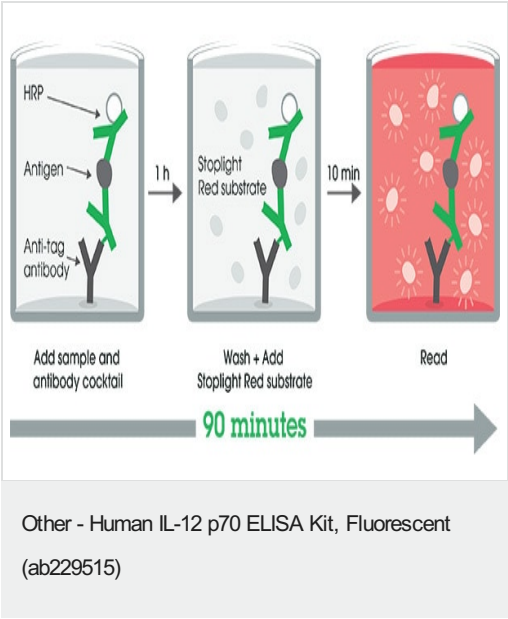
Store at +4°C. Please refer to protocols.

Components	1 x 96 tests
100X Stoplight Red Substrate	1 x 120 $\mu$ l
10X Human IL-12 p70 Capture Antibody	1 x 600 $\mu$ l
10X Human IL-12 p70 Detector Antibody	1 x 600 $\mu$ l
10X Wash Buffer PT (ab206977)	1 x 20ml
500X Hydrogen Peroxide (H <sub>2</sub> O <sub>2</sub> , 3%)	1 x 50 $\mu$ l
Antibody Diluent CPI - HAMA Blocker (ab193969)	1 x 6ml
Human IL-12 p70 Lyophilized Recombinant Protein	2 vials
Plate Seals	1 unit
Sample Diluent NS (ab193972)	1 x 50ml

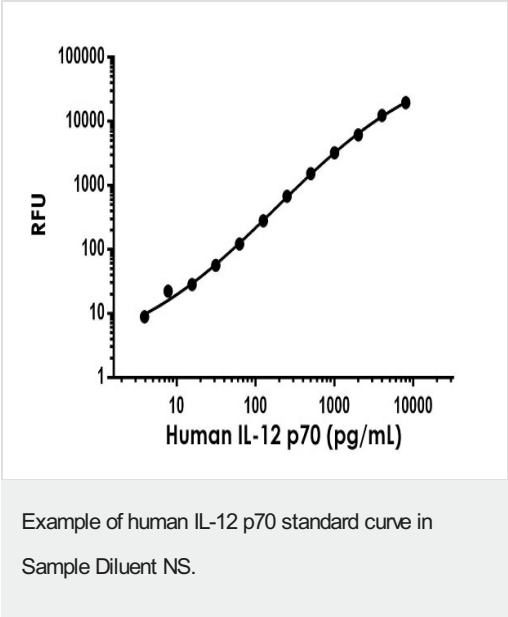
Components	1 x 96 tests
SimpleStep Pre-Coated Black 96-Well Microplate	1 unit
Stoplight Red Substrate Buffer	1 x 12ml

Relevance	IL-12 p70 is a disulfide bonded heterodimer of the IL-12 40 kDa and 35 kDa subunits.
Cellular localization	Secreted

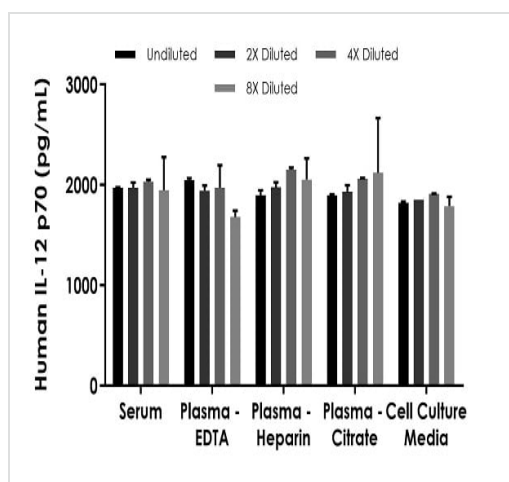
Images



SimpleStep ELISA technology allows the formation of the antibody-antigen complex in one single step, reducing assay time to 90 minutes. Add samples or standards and antibody mix to wells all at once, incubate, wash, and add your final substrate. See protocol for a detailed step-by-step guide.



The IL-12 p70 standard curve was prepared as described in Section 10. Background-subtracted data values (mean +/- SD) are graphed.



Interpolated concentrations of spike IL-12 p70 in human serum, plasma and cell culture supernatant samples.

The concentrations of IL-12 p70 were measured in duplicates, interpolated from the IL-12 p70 standard curves and corrected for sample dilution. Undiluted samples are as follows: serum 50%, plasma (EDTA) 50%, plasma (heparin) 50%, plasma (citrate) 50% and cell culture media 50%. The interpolated dilution factor corrected values are plotted (mean  $\pm$  SD, n=2).

Serum from ten individual healthy human female donors was measured in duplicate. No detectable levels of IL-12 p70 was measured.

Powered by  
recombinant antibodies

**Research with confidence**  
Consistent and reproducible results

**Long-term and scalable supply**  
Recombinant technology

**Success from the first experiment**  
Confirmed specificity

**Ethical standards compliant**  
Animal-free production

Sandwich ELISA - Human IL-12 p70 ELISA Kit,  
Fluorescent (ab229515)

To learn more about the advantages of recombinant antibodies see [here](#).

**Please note:** All products are "FOR RESEARCH USE ONLY. NOT FOR USE IN DIAGNOSTIC PROCEDURES"

#### Our Abpromise to you: Quality guaranteed and expert technical support

- Replacement or refund for products not performing as stated on the datasheet
- Valid for 12 months from date of delivery
- Response to your inquiry within 24 hours
- We provide support in Chinese, English, French, German, Japanese and Spanish
- Extensive multi-media technical resources to help you

- We investigate all quality concerns to ensure our products perform to the highest standards

If the product does not perform as described on this datasheet, we will offer a refund or replacement. For full details of the Abpromise, please visit <https://www.abcam.com/abpromise> or contact our technical team.

#### **Terms and conditions**

---

- Guarantee only valid for products bought direct from Abcam or one of our authorized distributors