

## Product datasheet

### Human NBL1 ELISA Kit ab99997

[2 Images](#)

#### Overview

<b>Product name</b>	Human NBL1 ELISA Kit
<b>Detection method</b>	Colorimetric
<b>Sample type</b>	Cell culture supernatant, Serum, Plasma
<b>Assay type</b>	Sandwich (quantitative)
<b>Sensitivity</b>	< 35 pg/ml
<b>Range</b>	27.43 pg/ml - 20000 pg/ml
<b>Recovery</b>	95 %

Sample specific recovery

Sample type	Average %	Range
Cell culture supernatant	111.3	107% - 122%
Serum	100.1	91% - 109%
Plasma	81.82	72% - 90%

**Assay duration** Multiple steps standard assay

**Species reactivity** **Reacts with:** Human

**Product overview** Abcam's NBL1 Human ELISA (Enzyme-Linked Immunosorbent Assay) kit is an *in vitro* enzyme-linked immunosorbent assay for the quantitative measurement of Human NBL1 in serum, plasma, and cell culture supernatants.

This assay employs an antibody specific for Human NBL1 coated on a 96-well plate. Standards and samples are pipetted into the wells and NBL1 present in a sample is bound to the wells by the immobilized antibody. The wells are washed and biotinylated anti-Human NBL1 antibody is added. After washing away unbound biotinylated antibody, HRP-conjugated streptavidin is pipetted to the wells. The wells are again washed, a TMB substrate solution is added to the wells and color develops in proportion to the amount of NBL1 bound. The Stop Solution changes the color from blue to yellow, and the intensity of the color is measured at 450 nm..

**Notes** Optimization may be required with urine samples.

**Platform** Microplate

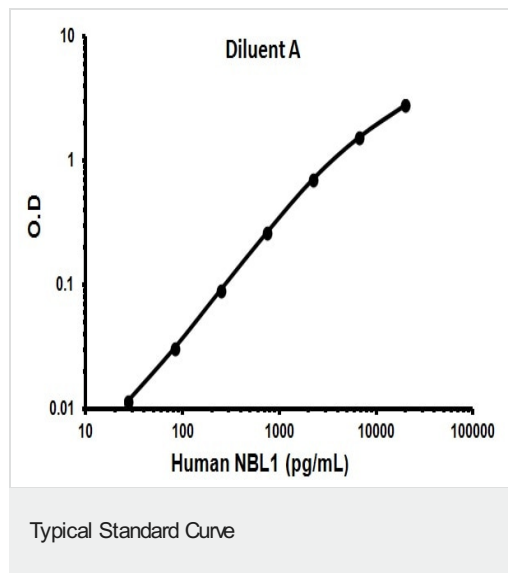
## Properties

### Storage instructions

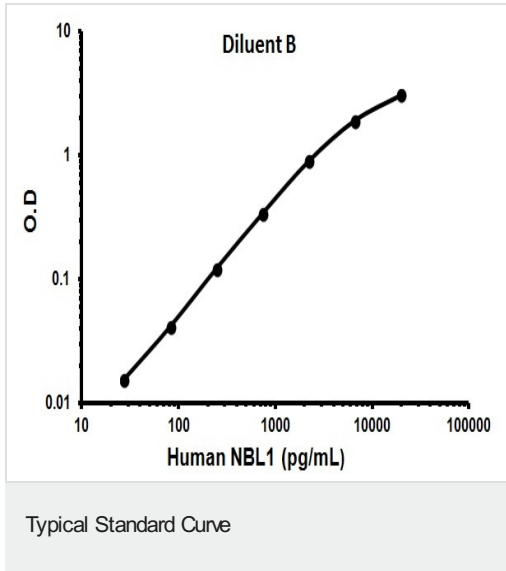
Store at -20°C. Please refer to protocols.

Components	1 x 96 tests
20X Wash Buffer	1 x 25ml
300X HRP-Streptavidin Concentrate	1 x 200µl
5X Assay Diluent B	1 x 15ml
Assay Diluent A	1 x 30ml
Biotinylated anti-Human NBL1	2 vials
NBL1 Microplate (12 strips x 8 wells)	1 unit
Recombinant Human NBL1 Standard (lyophilized)	2 vials
Stop Solution	1 x 8ml
TMB One-Step Substrate Reagent	1 x 12ml

## Images



Representative Standard Curve using ab99997



Representative Standard Curve using ab99997

**Please note:** All products are "FOR RESEARCH USE ONLY. NOT FOR USE IN DIAGNOSTIC PROCEDURES"

### Our Abpromise to you: Quality guaranteed and expert technical support

- Replacement or refund for products not performing as stated on the datasheet
- Valid for 12 months from date of delivery
- Response to your inquiry within 24 hours
- We provide support in Chinese, English, French, German, Japanese and Spanish
- Extensive multi-media technical resources to help you
- We investigate all quality concerns to ensure our products perform to the highest standards

If the product does not perform as described on this datasheet, we will offer a refund or replacement. For full details of the Abpromise, please visit <https://www.abcam.com/abpromise> or contact our technical team.

### Terms and conditions

- Guarantee only valid for products bought direct from Abcam or one of our authorized distributors