

Human OX40 ELISA Kit (TNFRSF4) ab231926

Recombinant SimpleStep ELISA

1 References 8 Images

Overview

Product name Human OX40 ELISA Kit (TNFRSF4)

Detection method Colorimetric

Precision

Intra-assay

Sample	n	Mean	SD	CV%
Cell medium	5			3.6%

					Inter-assay
Sample	n	Mean	SD	CV%	
Cell medium	3			4.9%	

Sample type Cell culture supernatant, Serum, Cell culture extracts, Hep Plasma, EDTA Plasma, Cit plasma

Assay type Sandwich (quantitative)

Sensitivity 23 pg/ml

Range 46.9 pg/ml - 3000 pg/ml

Recovery

Sample specific recovery		
Sample type	Average %	Range
Serum	120	116% - 122%
Cell culture extracts	106	102% - 111%
Cell culture media	113	112% - 114%
Hep Plasma	120	116% - 121%
EDTA Plasma	115	112% - 117%
Cit plasma	116	113% - 117%

Assay time	1h 30m
Assay duration	One step assay
Species reactivity	Reacts with: Human
Product overview	<p>Human OX40 ELISA Kit (TNFRSF4) (ab231926) is a single-wash 90 min sandwich ELISA designed for the quantitative measurement of OX40 protein in cit plasma, edta plasma, hep plasma, serum, cell culture supernatant, and cell culture extracts. It uses our proprietary SimpleStep ELISA® technology. Quantitate Human OX40 with 23 pg/ml sensitivity.</p> <p>SimpleStep ELISA® technology employs capture antibodies conjugated to an affinity tag that is recognized by the monoclonal antibody used to coat our SimpleStep ELISA® plates. This approach to sandwich ELISA allows the formation of the antibody-analyte sandwich complex in a single step, significantly reducing assay time. See the SimpleStep ELISA® protocol summary in the image section for further details. Our SimpleStep ELISA® technology provides several benefits:</p> <ul style="list-style-type: none"> - Single-wash protocol reduces assay time to 90 minutes or less - High sensitivity, specificity and reproducibility from superior antibodies - Fully validated in biological samples - 96-wells plate breakable into 12 x 8 wells strips <p>A 384-well SimpleStep ELISA® microplate (ab203359) is available to use as an alternative to the 96-well microplate provided with SimpleStep ELISA® kits.</p>
Notes	<p>Abcam has not and does not intend to apply for the REACH Authorisation of customers' uses of products that contain European Authorisation list (Annex XIV) substances.</p> <p>It is the responsibility of our customers to check the necessity of application of REACH Authorisation, and any other relevant authorisations, for their intended uses.</p>
Platform	Pre-coated microplate (12 x 8 well strips)

Properties

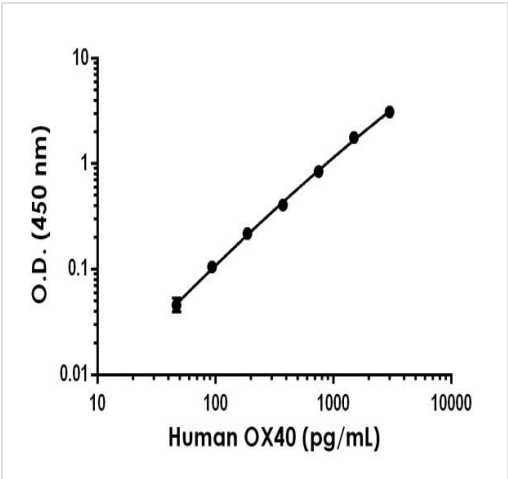
Storage instructions Store at +4°C. Please refer to protocols.

Components	1 x 96 tests
10X Human OX40 Capture Antibody	1 x 600µl
10X Human OX40 Detector Antibody	1 x 600µl
10X Wash Buffer PT (ab206977)	1 x 20ml
5X Cell Extraction Buffer PTR (ab193970)	1 x 10ml
Antibody Diluent 4BI	1 x 6ml
Human OX40 Lyophilized Recombinant Protein	2 vials
Plate Seals	1 unit

Components	1 x 96 tests
Sample Diluent NS (ab193972)	1 x 12ml
SimpleStep Pre-Coated 96-Well Microplate (ab206978)	1 unit
Stop Solution	1 x 12ml
TMB Development Solution	1 x 12ml

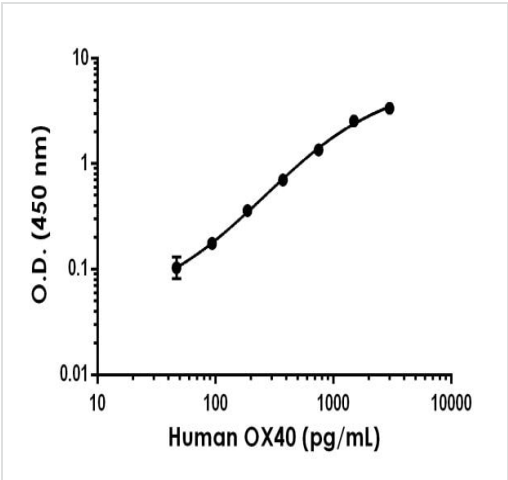
Function	Receptor for TNFSF4/OX40L/GP34.
Sequence similarities	Contains 4 TNFR-Cys repeats.
Cellular localization	Membrane.

Images



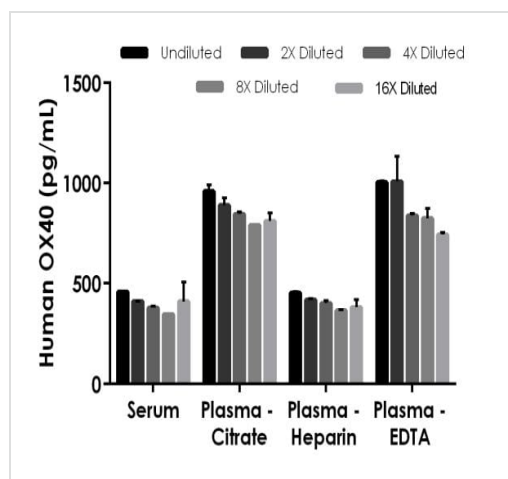
Background-subtracted data values (mean +/- SD) are graphed.

Example of human OX40 standard curve in Sample Diluent NS



Background-subtracted data values (mean +/- SD) are graphed.

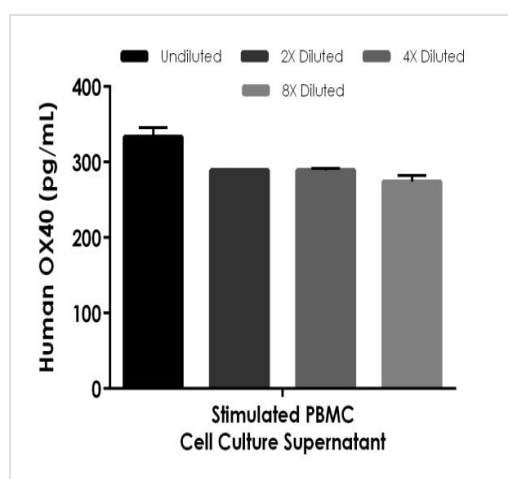
Example of human OX40 standard curve in 1X Cell Extraction Buffer PTR



Interpolated concentrations of spiked OX40 in human serum and plasma samples

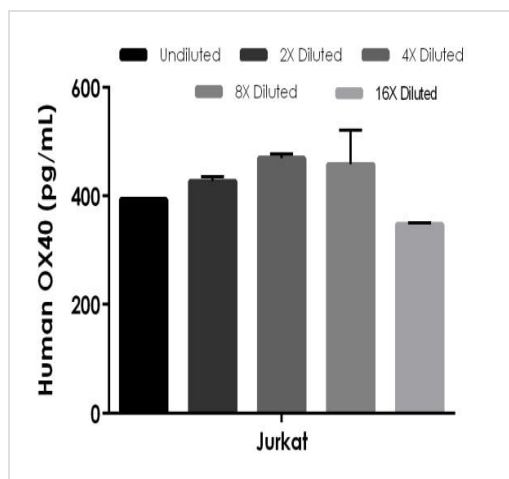
The concentrations of OX40 were measured in duplicates, interpolated from the OX40 standard curves and corrected for sample dilution. Undiluted samples are as follows: serum 12.5%, plasma (citrate) 25%, plasma (heparin) 12.5% and plasma (EDTA) 25%. The interpolated dilution factor corrected values are plotted (mean \pm SD, n=2).

Serum from ten individual healthy human female donors was measured in duplicate. No detectable levels of OX40 were measured.



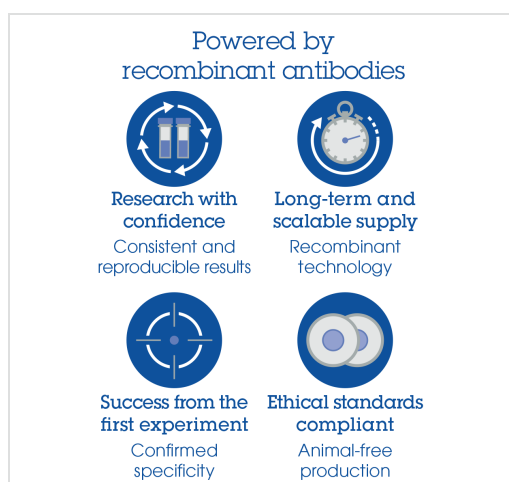
Interpolated concentrations of native OX40 in human cell culture supernatant sample

The concentrations of OX40 were measured in duplicates, interpolated from the OX40 standard curves and corrected for sample dilution. Undiluted samples are as follows: Stimulated PBMC cell culture supernatant 100%. The interpolated dilution factor corrected values are plotted (mean \pm SD, n=2). The mean OX40 concentration was determined to be 296 pg/mL in Stimulated PBMC cell culture supernatant, and undetectable in unstimulated and media controls.



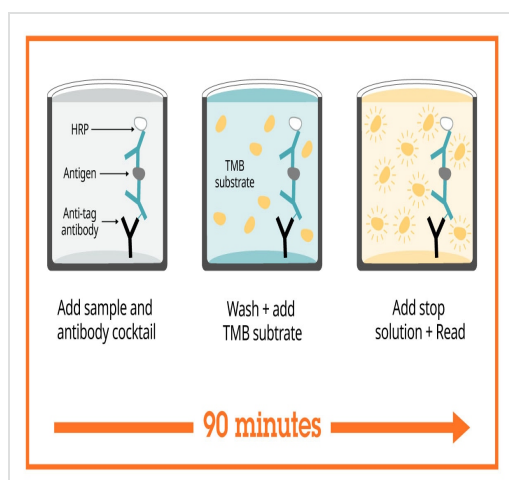
Interpolated concentrations of native OX40 in human Jurkat Cell Extract, sample based on a 4,000 µg/mL extract load

The concentrations of OX40 were measured in duplicate and interpolated from the OX40 standard curve and corrected for sample dilution. The interpolated dilution factor corrected values are plotted (mean \pm SD, n=2). The mean OX40 concentration was determined to be 419 pg/mL in Jurkat Cell Extract.



Sandwich ELISA - Human OX40 ELISA Kit
(TNFRSF4) (ab231926)

To learn more about the advantages of recombinant antibodies see [here](#).



Sandwich ELISA - Human OX40 ELISA Kit
(TNFRSF4) (ab231926)

SimpleStep ELISA technology allows the formation of the antibody-antigen complex in one single step, reducing assay time to 90 minutes. Add samples or standards and antibody mix to wells all at once, incubate, wash, and add your final substrate. See protocol for a detailed step-by-step guide.

**Get more done with
SimpleStep ELISA**



Easy to use
Single-wash 90-minute
protocol



Flexible
Matched antibody pairs
available



Precision antibodies
High sensitivity, specificity
and reproducibility



Scalable
Now in 10-pack and
384-well formats

To learn more about the advantages of SimpleStep ELISA® kits
see [here](#).

Sandwich ELISA - Human OX40 ELISA Kit
(TNFRSF4) (ab231926)

Please note: All products are "FOR RESEARCH USE ONLY. NOT FOR USE IN DIAGNOSTIC PROCEDURES"

Our Abpromise to you: Quality guaranteed and expert technical support

- Replacement or refund for products not performing as stated on the datasheet
- Valid for 12 months from date of delivery
- Response to your inquiry within 24 hours
- We provide support in Chinese, English, French, German, Japanese and Spanish
- Extensive multi-media technical resources to help you
- We investigate all quality concerns to ensure our products perform to the highest standards

If the product does not perform as described on this datasheet, we will offer a refund or replacement. For full details of the Abpromise, please visit <https://www.abcam.com/abpromise> or contact our technical team.

Terms and conditions

- Guarantee only valid for products bought direct from Abcam or one of our authorized distributors