

Human PBK ELISA Kit ab184866

Recombinant SimpleStep ELISA

7 Images

Overview

Product name	Human PBK ELISA Kit				
Detection method	Colorimetric				
Precision	Intra-assay				
	Sample	n	Mean	SD	CV%
	Jurkat cells	5			2%
	Inter-assay				
	Sample	n	Mean	SD	CV%
	Jurkat cells	3			14%
Sample type	Cell culture extracts, Adherent cells, Suspension cells, Tissue Extracts, Cell Lysate, Tissue Homogenate				
Assay type	Sandwich (quantitative)				
Sensitivity	133 pg/ml				
Range	300 pg/ml - 5000 pg/ml				
Recovery	Sample specific recovery				
	Sample type		Average %		Range
	Cell culture media		103		97% - 109%
	Extraction Buffer		100		99% - 100%
Assay time	1h 30m				
Assay duration	One step assay				
Species reactivity	Reacts with: Human				
Product overview	Human PBK (PDZ Binding Kinase) ELISA kit (ab184866) is a single-wash 90 min sandwich ELISA designed for the quantitative measurement of PBK protein in cell and tissue extracts. It uses our proprietary SimpleStep ELISA® technology. Quantitate human PDZ Binding Kinase with				

133 pg/mL sensitivity.

SimpleStep ELISA® technology employs capture antibodies conjugated to an affinity tag that is recognized by the monoclonal antibody used to coat our SimpleStep ELISA® plates. This approach to sandwich ELISA allows the formation of the antibody-analyte sandwich complex in a single step, significantly reducing assay time. See the SimpleStep ELISA® protocol summary in the image section for further details. Our SimpleStep ELISA® technology provides several benefits:

- Single-wash protocol reduces assay time to 90 minutes or less
- High sensitivity, specificity and reproducibility from superior antibodies
- Fully validated in biological samples
- 96-wells plate breakable into 12 x 8 wells strips

A 384-well SimpleStep ELISA® microplate (**ab203359**) is available to use as an alternative to the 96-well microplate provided with SimpleStep ELISA® kits.

Notes

PDZ-binding kinase (also known PBK or Lymphocyte-activated killer T-cell-originated protein kinase) is a Serine/Threonine protein kinase in the MAP kinase kinase subfamily. PBK phosphorylates MAP kinase p38. PBK itself is phosphorylated and appears to be active only during the mitotic phase of the cell cycle. When phosphorylated PBK may interact with TP53. PBK may play a role in the activation of lymphoid cells and is found to expressed in many highly proliferative cell lines.

The standard is affinity purified.

Abcam has not and does not intend to apply for the REACH Authorisation of customers' uses of products that contain European Authorisation list (Annex XIV) substances.

It is the responsibility of our customers to check the necessity of application of REACH Authorisation, and any other relevant authorisations, for their intended uses.

Platform

Microplate

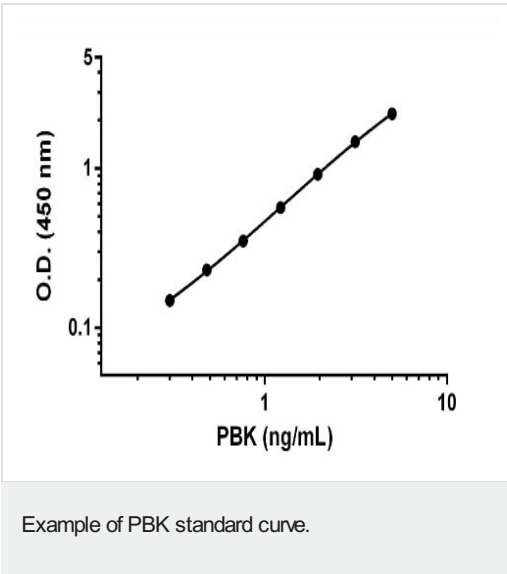
Properties

Storage instructions Store at +4°C. Please refer to protocols.

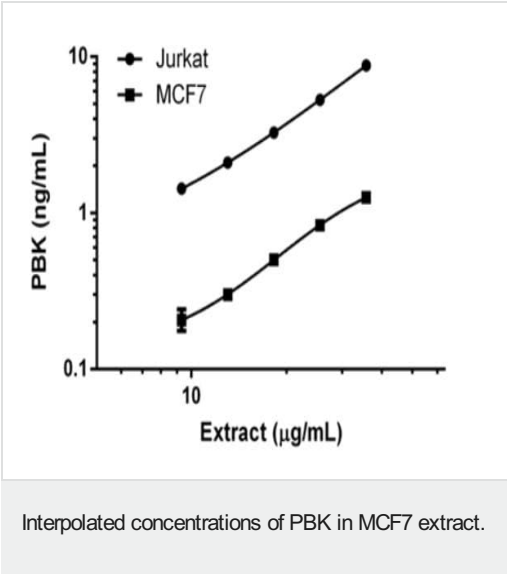
Components	1 x 96 tests
10X Human PDZ Binding Kinase Capture Antibody	1 x 600µl
10X Human PDZ Binding Kinase Detector Antibody	1 x 600µl
10X Wash Buffer PT (ab206977)	1 x 20ml
50X Cell Extraction Enhancer Solution (ab193971)	1 x 1ml
5X Cell Extraction Buffer PTR (ab193970)	1 x 10ml
Antibody Diluent CPI - HAMA Blocker (ab193969)	1 x 6ml
Human PDZ Binding Kinase Lyophilized Recombinant Protein	2 vials

Components	1 x 96 tests
Plate Seals	1 unit
Sample Diluent NS (ab193972)	1 x 12ml
SimpleStep Pre-Coated 96-Well Microplate (ab206978)	1 unit
Stop Solution	1 x 12ml
TMB Development Solution	1 x 12ml

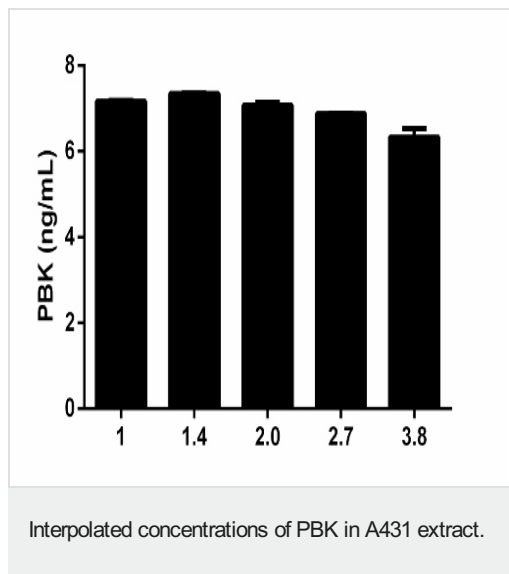
Images



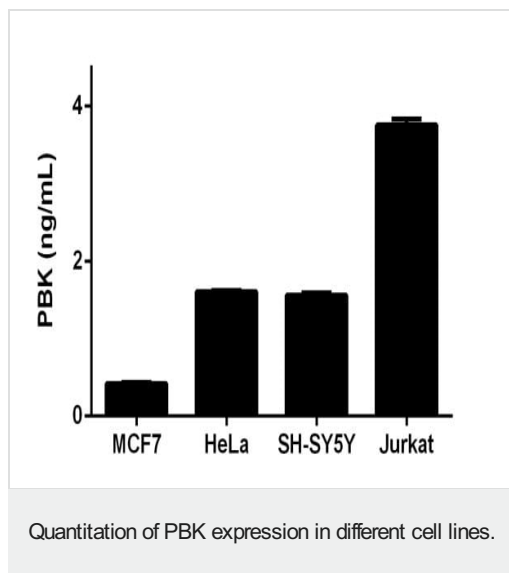
Background-subtracted data values (mean +/- SD) are graphed.



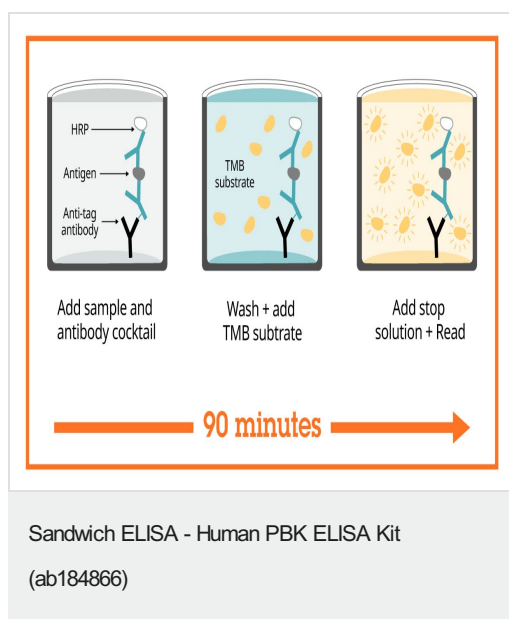
The concentrations of PBK protein were interpolated from the PBK standard curve and plotted against the extract load.



The concentrations of PBK protein were interpolated from the PBK standard curve and corrected for sample dilution relative to extract load of 35.7 $\mu\text{g/mL}$. The mean PBK concentration was determined to be 6.95 ng/mL in A431 extract at 35.7 $\mu\text{g/mL}$.



Interpolated values of PBK are plotted for the indicated cell lines based on a extract load of 250 $\mu\text{g/mL}$.



SimpleStep ELISA technology allows the formation of the antibody-antigen complex in one single step, reducing assay time to 90 minutes. Add samples or standards and antibody mix to wells all at once, incubate, wash, and add your final substrate. See protocol for a detailed step-by-step guide.

Powered by
recombinant antibodies



Research with confidence
Consistent and reproducible results



Long-term and scalable supply
Recombinant technology



Success from the first experiment
Confirmed specificity



Ethical standards compliant
Animal-free production

Sandwich ELISA - Human PBK ELISA Kit
(ab184866)

To learn more about the advantages of recombinant antibodies see [here](#).

**Get more done with
SimpleStep ELISA**



Easy to use
Single-wash 90-minute protocol



Flexible
Matched antibody pairs available



Precision antibodies
High sensitivity, specificity and reproducibility



Scalable
Now in 10-pack and 384-well formats

Sandwich ELISA - Human PBK ELISA Kit
(ab184866)

To learn more about the advantages of SimpleStep ELISA® kits see [here](#).

Please note: All products are "FOR RESEARCH USE ONLY. NOT FOR USE IN DIAGNOSTIC PROCEDURES"

Our Abpromise to you: Quality guaranteed and expert technical support

- Replacement or refund for products not performing as stated on the datasheet
- Valid for 12 months from date of delivery
- Response to your inquiry within 24 hours
- We provide support in Chinese, English, French, German, Japanese and Spanish
- Extensive multi-media technical resources to help you
- We investigate all quality concerns to ensure our products perform to the highest standards

If the product does not perform as described on this datasheet, we will offer a refund or replacement. For full details of the Abpromise, please visit <https://www.abcam.com/abpromise> or contact our technical team.

Terms and conditions

- Guarantee only valid for products bought direct from Abcam or one of our authorized distributors