

### Human PYY ELISA Kit ab255727

Recombinant SimpleStep ELISA®

[1 References](#) [6 Images](#)

#### Overview

**Product name** Human PYY ELISA Kit

**Detection method** Colorimetric

**Precision**

Intra-assay

Sample	n	Mean	SD	CV%
extract	8			11.7%

Inter-assay

Sample	n	Mean	SD	CV%
extract	3			12.2%

**Sample type** Tissue Extracts, EDTA Plasma

**Assay type** Sandwich (quantitative)

**Sensitivity** 9.8 pg/ml

**Range** 31.25 pg/ml - 1000 pg/ml

**Recovery**

Sample specific recovery

Sample type	Average %	Range
Tissue Extracts	109	108% - 111%
EDTA Plasma	92	81% - 106%

**Assay time** 1h 30m

**Assay duration** One step assay

**Species reactivity** **Reacts with:** Human

**Product overview** Human PYY ELISA Kit (ab255727) is a single-wash 90 min sandwich ELISA designed for the quantitative measurement of PYY protein in tissue extracts and edta plasma. It uses our proprietary SimpleStep ELISA® technology. Quantitate Human PYY with 8.4 pg/ml sensitivity.

SimpleStep ELISA® technology employs capture antibodies conjugated to an affinity tag that is recognized by the monoclonal antibody used to coat our SimpleStep ELISA® plates. This approach to sandwich ELISA allows the formation of the antibody-analyte sandwich complex in a single step, significantly reducing assay time. See the SimpleStep ELISA® protocol summary in the image section for further details. Our SimpleStep ELISA® technology provides several benefits:

- Single-wash protocol reduces assay time to 90 minutes or less
- High sensitivity, specificity and reproducibility from superior antibodies
- Fully validated in biological samples
- 96-wells plate breakable into 12 x 8 wells strips

A 384-well SimpleStep ELISA® microplate ([ab203359](#)) is available to use as an alternative to the 96-well microplate provided with SimpleStep ELISA® kits.

## Notes

Peptide PYY, also known as peptide tyrosine tyrosine, is a short 36- amino acid peptide encoded by the gene *PYY*. PYY is released from L cells in the ileum and colon in response to feeding, and functions by binding to NPY receptors to induce satiety. Two forms of PYY have been identified, PYY1-36 and PYY3-36, with the latter is most common form. PYY is cleaved at the Pro-30 residue by prolyl endopeptidase FAP (Separase) to generate peptide PYY3-36. PYY3-36 binds to the Y2 receptor of the Y family of receptors. PYY inhibits exocrine pancreatic secretion by vasoconstrictor action and inhibits jejunal/colonic mobility, allowing a more efficient digestion and nutrient absorption.

Abcam has not and does not intend to apply for the REACH Authorisation of customers' uses of products that contain European Authorisation list (Annex XIV) substances.

It is the responsibility of our customers to check the necessity of application of REACH Authorisation, and any other relevant authorisations, for their intended uses.

## Platform

Pre-coated microplate (12 x 8 well strips)

## Properties

**Storage instructions** Store at +4°C. Please refer to protocols.

Components	1 x 96 tests
10X Human PYY Capture Antibody	1 x 600µl
10X Human PYY Detector Antibody	1 x 600µl
10X Wash Buffer PT (ab206977)	1 x 20ml
50X Cell Extraction Enhancer Solution (ab193971)	1 x 1ml
5X Cell Extraction Buffer PTR (ab193970)	1 x 10ml
Antibody Diluent 5BI	1 x 6ml
Human PYY Lyophilized Recombinant Protein	2 vials
Plate Seals	1 unit

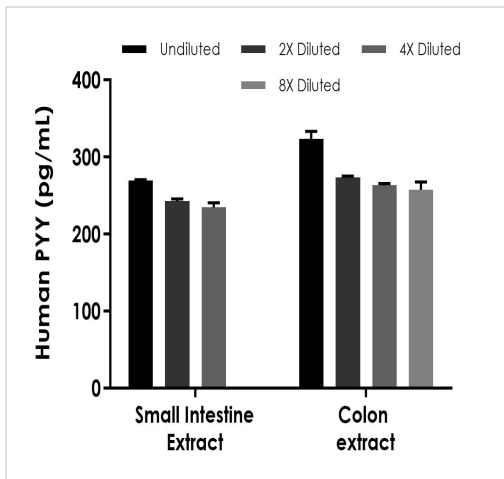
Components	1 x 96 tests
Sample Diluent NS (ab193972)	1 x 12ml
SimpleStep Pre-Coated 96-Well Microplate (ab206978)	1 unit
Stop Solution	1 x 12ml
TMB Development Solution	1 x 12ml

**Function** This gut peptide inhibits exocrine pancreatic secretion, has a vasoconstrictory action and inhibits jejunal and colonic mobility.

**Sequence similarities** Belongs to the NPY family.

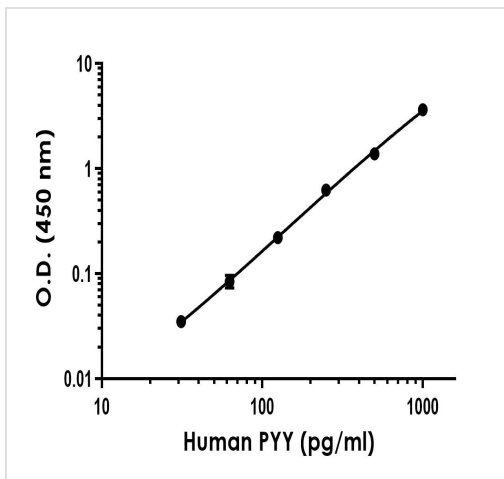
**Cellular localization** Secreted.

## Images



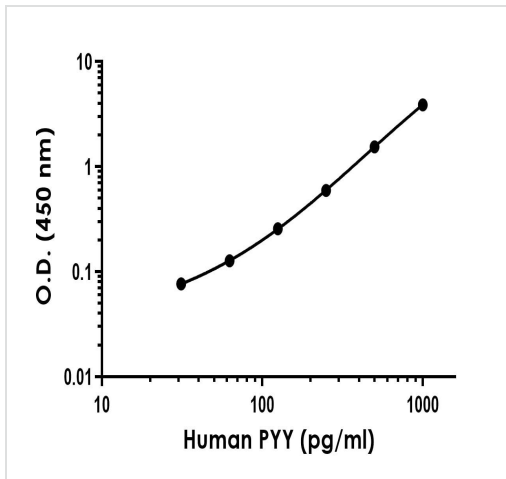
Interpolated concentrations of native PYY in human small intestine and human colon extract

The concentrations of PYY were measured in duplicate and interpolated from the PYY standard curve and corrected for sample dilution. The interpolated dilution factor corrected values are plotted (mean  $\pm$  SD, n=2). Undiluted samples are as follows: small intestine extract 37.5  $\mu$ g/mL and colon extract 150  $\mu$ g/mL.



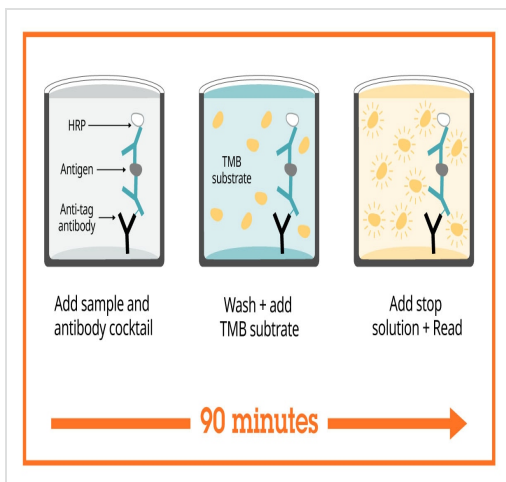
Human PYY standard curve example

The PYY standard curve was prepared as described in Section 10. Raw data values are shown in the table. Background-subtracted data values (mean  $\pm$  SD) are graphed.



Example of human PYY standard curve

The PYY standard curve was prepared as described in Section 10. Raw data values are shown in the table. Background-subtracted data values (mean +/- SD) are graphed.



Sandwich ELISA - Human PYY ELISA Kit  
(ab255727)

SimpleStep ELISA technology allows the formation of the antibody-antigen complex in one single step, reducing assay time to 90 minutes. Add samples or standards and antibody mix to wells all at once, incubate, wash, and add your final substrate. See protocol for a detailed step-by-step guide.

Powered by recombinant antibodies

<p><b>Research with confidence</b> Consistent and reproducible results</p>	<p><b>Long-term and scalable supply</b> Recombinant technology</p>
<p><b>Success from the first experiment</b> Confirmed specificity</p>	<p><b>Ethical standards compliant</b> Animal-free production</p>

Sandwich ELISA - Human PYY ELISA Kit  
(ab255727)

To learn more about the advantages of recombinant antibodies see [here](#).

### Get more done with SimpleStep ELISA



**Easy to use**  
Single-wash 90-minute protocol



**Flexible**  
Matched antibody pairs available



**Precision antibodies**  
High sensitivity, specificity and reproducibility



**Scalable**  
Now in 10-pack and 384-well formats

Sandwich ELISA - Human PYY ELISA Kit  
(ab255727)

To learn more about the advantages of SimpleStep ELISA<sup>®</sup> kits see [here](#).

**Please note:** All products are "FOR RESEARCH USE ONLY. NOT FOR USE IN DIAGNOSTIC PROCEDURES"

### Our Abpromise to you: Quality guaranteed and expert technical support

---

- Replacement or refund for products not performing as stated on the datasheet
- Valid for 12 months from date of delivery
- Response to your inquiry within 24 hours
- We provide support in Chinese, English, French, German, Japanese and Spanish
- Extensive multi-media technical resources to help you
- We investigate all quality concerns to ensure our products perform to the highest standards

If the product does not perform as described on this datasheet, we will offer a refund or replacement. For full details of the Abpromise, please visit <https://www.abcam.com/abpromise> or contact our technical team.

### Terms and conditions

---

- Guarantee only valid for products bought direct from Abcam or one of our authorized distributors