

# Human Resistin ELISA Kit (RETN) ab108896

[2 References](#) [1 Image](#)

### Overview

**Product name** Human Resistin ELISA Kit (RETN)

**Detection method** Colorimetric

**Precision**

Intra-assay

Sample	n	Mean	SD	CV%
Overall				5.3%

Inter-assay

Sample	n	Mean	SD	CV%
Overall				10.2%

**Sample type** Cell culture supernatant, Urine, Serum, Plasma, Cerebral Spinal Fluid

**Assay type** Sandwich (quantitative)

**Sensitivity** = 0.2 ng/ml

**Range** 0.25 ng/ml - 16 ng/ml

**Recovery** = 97 %

**Assay time** 5h 00m

**Assay duration** Multiple steps standard assay

**Species reactivity** **Reacts with:** Human

**Product overview**

Abcam's Resistin (RETN) Human *in vitro* ELISA (Enzyme-Linked Immunosorbent Assay) kit is designed for the quantitative measurement of Resistin concentrations in Human plasma, serum, urine, saliva and cell culture supernatants.

A Resistin specific antibody has been precoated onto 96-well plates and blocked. Standards or test samples are added to the wells and subsequently a Resistin specific biotinylated detection antibody is added and then followed by washing with wash buffer. Streptavidin-Peroxidase Conjugate is added and unbound conjugates are washed away with wash buffer. TMB is then used to visualize Streptavidin-Peroxidase enzymatic reaction. TMB is catalyzed by Streptavidin-Peroxidase to produce a blue color product that changes into yellow after adding acidic stop solution. The density of yellow coloration is directly proportional to the amount of Resistin captured in plate.

Get results in 90 minutes with Human Resistin ELISA Kit ([ab183364](#)) from our SimpleStep ELISA® range.

**The entire kit may be stored at -20°C for long term storage before reconstitution - Avoid repeated freeze-thaw cycles.**

**Platform** Microplate

## Properties

---

**Storage instructions** Store at -20°C. Please refer to protocols.

Components	1 x 96 tests
100X Streptavidin-Peroxidase Conjugate	1 x 80µl
10X Diluent M Concentrate	1 x 30ml
20X Wash Buffer Concentrate	2 x 30ml
50X Biotinylated Human Resistin Antibody	1 x 120µl
Chromogen Substrate	1 x 7ml
Resistin Microplate (12 x 8 well strips)	1 unit
Resistin Standard	1 vial
Sealing Tapes	3 units
Stop Solution	1 x 11ml

**Function** Hormone that seems to suppress insulin ability to stimulate glucose uptake into adipose cells. Potentially links obesity to diabetes.

**Tissue specificity** Expressed only in fatty tissues.

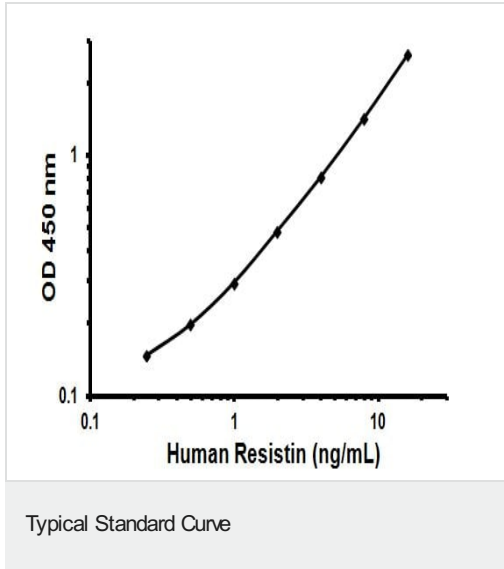
**Sequence similarities** Belongs to the resistin/FIZZ family.

**Cellular localization** Secreted.

---

## Images

---



Representative Standard Curve using ab108896.

**Please note:** All products are "FOR RESEARCH USE ONLY. NOT FOR USE IN DIAGNOSTIC PROCEDURES"

### Our Abpromise to you: Quality guaranteed and expert technical support

---

- Replacement or refund for products not performing as stated on the datasheet
- Valid for 12 months from date of delivery
- Response to your inquiry within 24 hours
  
- We provide support in Chinese, English, French, German, Japanese and Spanish
- Extensive multi-media technical resources to help you
- We investigate all quality concerns to ensure our products perform to the highest standards

If the product does not perform as described on this datasheet, we will offer a refund or replacement. For full details of the Abpromise, please visit <https://www.abcam.com/abpromise> or contact our technical team.

### Terms and conditions

---

- Guarantee only valid for products bought direct from Abcam or one of our authorized distributors