

Human Serpin A12 ELISA Kit α b239430

Recombinant SimpleStep ELISA[®]

8 Images

Overview

| | | | | | |
|------------------|--|---|-----------|----|-------------|
| Product name | Human Serpin A12 ELISA Kit | | | | |
| Detection method | Colorimetric | | | | |
| Precision | Intra-assay | | | | |
| | Sample | n | Mean | SD | CV% |
| | serum | 8 | | | 2.1% |
| | Inter-assay | | | | |
| | Sample | n | Mean | SD | CV% |
| | serum | 3 | | | 4.3% |
| Sample type | Saliva, Serum, Hep Plasma, EDTA Plasma, Cit plasma | | | | |
| Assay type | Sandwich (quantitative) | | | | |
| Sensitivity | 3.12 pg/ml | | | | |
| Range | 19.53 pg/ml - 1250 pg/ml | | | | |
| Recovery | Sample specific recovery | | | | |
| | Sample type | | Average % | | Range |
| | Saliva | | 97 | | 87% - 105% |
| | Serum | | 107 | | 103% - 110% |
| | Cell culture media | | 97 | | 96% - 100% |
| | Hep Plasma | | 100 | | 97% - 105% |
| | EDTA Plasma | | 99 | | 95% - 102% |
| | Cit plasma | | 89 | | 81% - 102% |

| | |
|---------------------------|--|
| Assay time | 1h 30m |
| Assay duration | One step assay |
| Species reactivity | Reacts with: Human |
| Product overview | Human Serpin A12 ELISA Kit (ab239430) is a single-wash 90 min sandwich ELISA designed for the quantitative measurement of Serpin A12 protein in cit plasma, edta plasma, hep plasma, saliva, and serum. It uses our proprietary SimpleStep ELISA® technology. Quantitate Human Serpin A12 with 3.12 pg/ml sensitivity. |

SimpleStep ELISA® technology employs capture antibodies conjugated to an affinity tag that is recognized by the monoclonal antibody used to coat our SimpleStep ELISA® plates. This approach to sandwich ELISA allows the formation of the antibody-analyte sandwich complex in a single step, significantly reducing assay time. See the SimpleStep ELISA® protocol summary in the image section for further details. Our SimpleStep ELISA® technology provides several benefits:

- Single-wash protocol reduces assay time to 90 minutes or less
- High sensitivity, specificity and reproducibility from superior antibodies
- Fully validated in biological samples
- 96-wells plate breakable into 12 x 8 wells strips

A 384-well SimpleStep ELISA® microplate ([ab203359](#)) is available to use as an alternative to the 96-well microplate provided with SimpleStep ELISA® kits.

| | |
|-----------------|--|
| Platform | Pre-coated microplate (12 x 8 well strips) |
|-----------------|--|

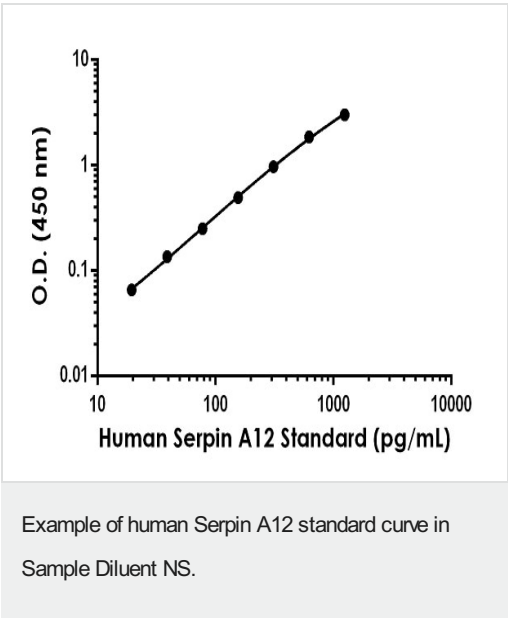
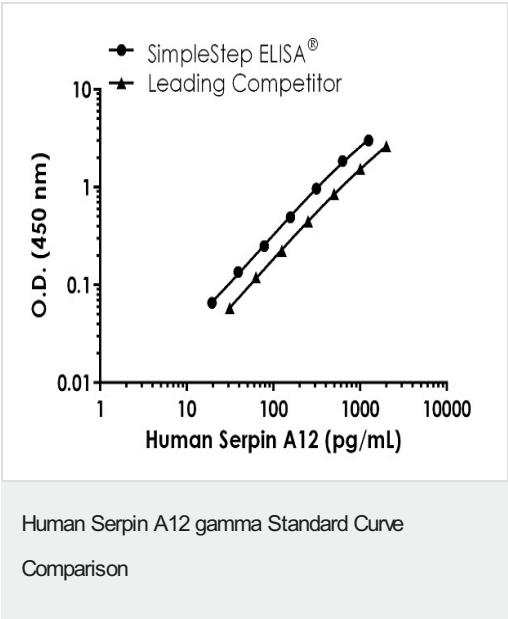
Properties

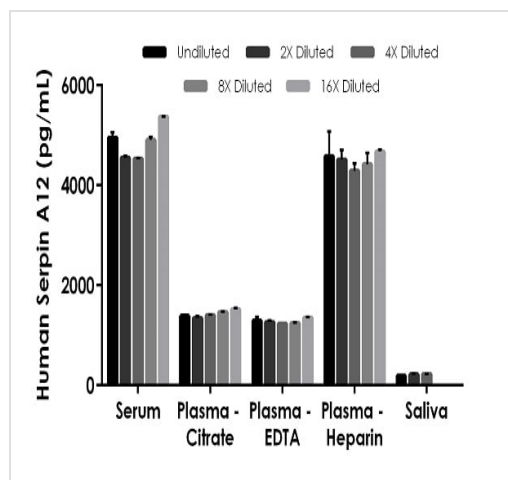
| | |
|-----------------------------|---|
| Storage instructions | Store at +4°C. Please refer to protocols. |
|-----------------------------|---|

| Components | 1 x 96 tests |
|---|--------------|
| 10X Human Serpin A12 Capture Antibody | 1 x 600µl |
| 10X Human Serpin A12 Detector Antibody | 1 x 600µl |
| 10X Wash Buffer PT (ab206977) | 1 x 20ml |
| Antibody Diluent 4BI | 1 x 6ml |
| Human Serpin A12 Lyophilized Recombinant Protein | 2 vials |
| Plate Seals | 1 unit |
| Sample Diluent NS (ab193972) | 1 x 12ml |
| SimpleStep Pre-Coated 96-Well Microplate (ab206978) | 1 unit |
| Stop Solution | 1 x 12ml |
| TMB Development Solution | 1 x 12ml |

| | |
|-----------------------|---|
| Function | May modulates insulin action conceivably only in the presence of its yet undefined target proteases in white adipose tissues. |
| Tissue specificity | Expressed in visceral adipose tissues. |
| Sequence similarities | Belongs to the serpin family. |
| Cellular localization | Secreted. |

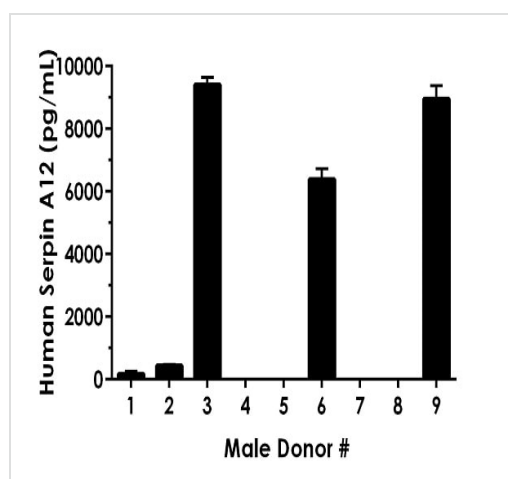
Images





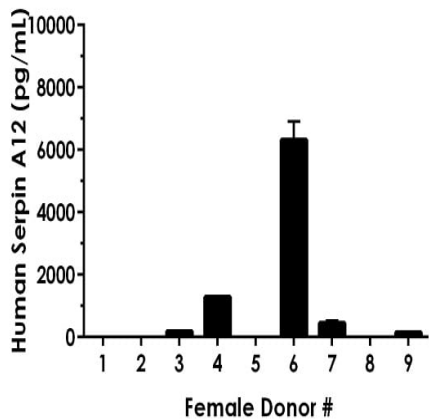
Interpolated concentrations of native Serpin A12 in human serum, plasma and saliva samples.

The concentrations of Serpin A12 were measured in duplicates, interpolated from the Serpin A12 standard curves and corrected for sample dilution. Undiluted samples are as follows: serum 15%, plasma (citrate) 50%, plasma (EDTA) 100%, plasma (heparin) 25% and saliva 50%. The interpolated dilution factor corrected values are plotted (mean \pm SD, $n=2$). The mean Serpin A12 concentration was determined to be 4862.24 pg/mL in serum, 1422.93 pg/mL in plasma (citrate), 1275.97 pg/mL in plasma (EDTA), 4493.91 pg/mL in plasma (heparin), and 208.10 pg/mL in saliva.



Serum from ten individual healthy human male donors was measured in duplicate.

Interpolated dilution factor corrected values are plotted (mean \pm SD, $n=2$). The mean Serpin A12 concentration was determined to be 5068.08 pg/mL with a range of undetectable - 9406.87 pg/mL.



Interpolated dilution factor corrected values are plotted (mean \pm SD, $n=2$). The mean Serpin A12 concentration was determined to be 1672.82 pg/mL with a range of undetectable - 6317.42 pg/mL.

Serum from ten individual healthy human female donors was measured in duplicate.

Powered by recombinant antibodies



Research with confidence
Consistent and reproducible results



Long-term and scalable supply
Recombinant technology



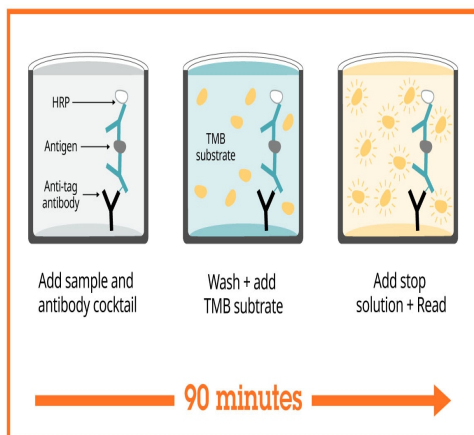
Success from the first experiment
Confirmed specificity



Ethical standards compliant
Animal-free production

To learn more about the advantages of recombinant antibodies see [here](#).

Sandwich ELISA - Human Serpin A12 ELISA Kit
(ab239430)



Sandwich ELISA - Human Serpin A12 ELISA Kit
(ab239430)

SimpleStep ELISA technology allows the formation of the antibody-antigen complex in one single step, reducing assay time to 90 minutes. Add samples or standards and antibody mix to wells all at once, incubate, wash, and add your final substrate. See protocol for a detailed step-by-step guide.

Get more done with SimpleStep ELISA



Easy to use
Single-wash 90-minute protocol



Flexible
Matched antibody pairs available



Precision antibodies
High sensitivity, specificity and reproducibility



Scalable
Now in 10-pack and 384-well formats

Sandwich ELISA - Human Serpin A12 ELISA Kit
(ab239430)

To learn more about the advantages of SimpleStep ELISA[®] kits see [here](#).

Please note: All products are "FOR RESEARCH USE ONLY. NOT FOR USE IN DIAGNOSTIC PROCEDURES"

Our Abpromise to you: Quality guaranteed and expert technical support

- Replacement or refund for products not performing as stated on the datasheet
- Valid for 12 months from date of delivery
- Response to your inquiry within 24 hours
- We provide support in Chinese, English, French, German, Japanese and Spanish

- Extensive multi-media technical resources to help you
- We investigate all quality concerns to ensure our products perform to the highest standards

If the product does not perform as described on this datasheet, we will offer a refund or replacement. For full details of the Abpromise, please visit <https://www.abcam.com/abpromise> or contact our technical team.

Terms and conditions

- Guarantee only valid for products bought direct from Abcam or one of our authorized distributors