

Human Thrombospondin 1 ELISA Kit ab193716

[2 References](#) [1 Image](#)

Overview

Product name Human Thrombospondin 1 ELISA Kit

Detection method Colorimetric

Precision

Intra-assay

Sample	n	Mean	SD	CV%
Overall				< 10%

Inter-assay

Sample	n	Mean	SD	CV%
Overall				< 12%

Sample type Cell culture supernatant, Serum, Plasma

Assay type Sandwich (quantitative)

Sensitivity 6 ng/ml

Range 6 ng/ml - 2000 ng/ml

Recovery

Sample specific recovery

Sample type	Average %	Range
Serum	91.67	79% - 113%
Plasma	83.27	67% - 109%
Cell culture media	86.97	73% - 108%

Assay duration Multiple steps standard assay

Species reactivity **Reacts with:** Human

Product overview Thrombospondin 1 Human ELISA Kit (ab193716) is an *in vitro* enzyme-linked immunosorbent assay for the quantitative measurement of Human Thrombospondin 1 in serum, plasma and cell culture supernatants.

This assay employs an antibody specific for Human Thrombospondin 1 coated on a 96-well plate.

Standards and samples are pipetted into the wells and the immobilized antibody captures Thrombospondin 1 present in the samples. The wells are washed and biotinylated Human Thrombospondin 1 antibody is added. After washing away any unbound biotinylated antibody, an HRP-conjugated streptavidin is pipetted to the wells. After incubation, the wells are again washed, followed by the addition of a TMB substrate solution to the wells. Color will develop in proportion to the amount of Thrombospondin 1 bound in each well. Addition of the Stop Solution will change the color from blue to yellow, and the intensity of the color is measured at 450 nm.

Platform Pre-coated microplate (12 x 8 well strips)

Properties

Storage instructions Store at -20°C. Please refer to protocols.

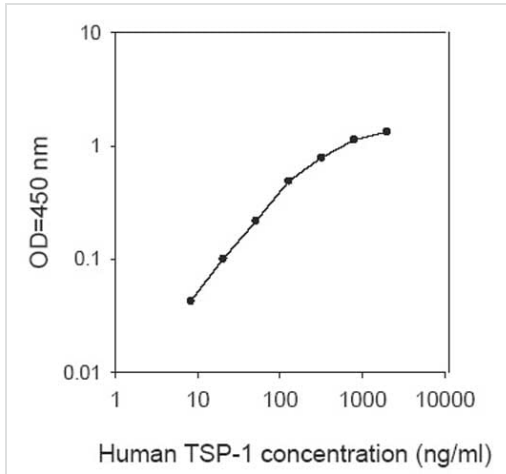
Components	1 x 96 tests
20X Wash Buffer	1 x 25ml
5X Assay Diluent D	1 x 15ml
700X HRP-Streptavidin Concentrate	1 x 200µl
5X Assay Diluent B	1 x 15ml
Biotinylated Human Thrombospondin detection antibody	2 vials
Human Thrombospondin Standards (lyophilized)	2 vials
Pre-coated Human Thrombospondin Microplate (12 strips x 8 wells)	1 unit
Stop Solution	1 x 8ml
TMB One-Step Substrate Reagent	1 x 12ml

Function Adhesive glycoprotein that mediates cell-to-cell and cell-to-matrix interactions. Binds heparin. May play a role in dentinogenesis and/or maintenance of dentin and dental pulp (By similarity). Ligand for CD36 mediating antiangiogenic properties. Plays a role in ER stress response, via its interaction with the activating transcription factor 6 alpha (ATF6) which produces adaptive ER stress response factors.

Sequence similarities Belongs to the thrombospondin family.
 Contains 2 EGF-like domains.
 Contains 1 laminin G-like domain.
 Contains 1 TSP C-terminal (TSPC) domain.
 Contains 3 TSP type-1 domains.
 Contains 8 TSP type-3 repeats.
 Contains 1 VWFC domain.

Cellular localization Endoplasmic reticulum. Sarcoplasmic reticulum.

Images



Typical Standard Curve using ab193716 Thrombospondin 1 Human ELISA Kit.

Typical Standard Curve

Please note: All products are "FOR RESEARCH USE ONLY. NOT FOR USE IN DIAGNOSTIC PROCEDURES"

Our Abpromise to you: Quality guaranteed and expert technical support

- Replacement or refund for products not performing as stated on the datasheet
- Valid for 12 months from date of delivery
- Response to your inquiry within 24 hours
- We provide support in Chinese, English, French, German, Japanese and Spanish
- Extensive multi-media technical resources to help you
- We investigate all quality concerns to ensure our products perform to the highest standards

If the product does not perform as described on this datasheet, we will offer a refund or replacement. For full details of the Abpromise, please visit <https://www.abcam.com/abpromise> or contact our technical team.

Terms and conditions

- Guarantee only valid for products bought direct from Abcam or one of our authorized distributors