

Human TSC-1 ELISA Kit ab223594

Recombinant SimpleStep ELISA[®]

5 Images

Overview

Product name	Human TSC-1 ELISA Kit				
Detection method	Colorimetric				
Precision	Intra-assay				
	Sample	n	Mean	SD	CV%
	Supernatant	8			4.8%
	Inter-assay				
	Sample	n	Mean	SD	CV%
	Supernatant	3			8.7%
Sample type	Cell culture supernatant, Serum, EDTA Plasma, Cit plasma				
Assay type	Sandwich (quantitative)				
Sensitivity	1.54 pg/ml				
Range	4.69 pg/ml - 300 pg/ml				
Recovery	Sample specific recovery				
	Sample type		Average %		Range
	Cell culture supernatant		101		95% - 108%
	Serum		102		90% - 118%
	EDTA Plasma		101		85% - 109%
	Cit plasma		102		83% - 117%
Assay time	1h 30m				
Assay duration	One step assay				
Species reactivity	Reacts with: Human				

Product overview

Human TSC-1 ELISA Kit (ab223594) is a single-wash 90 min sandwich ELISA designed for the quantitative measurement of TSC-1 protein in cell culture supernatant, cit plasma, edta plasma, and serum. It uses our proprietary SimpleStep ELISA® technology. Quantitate Human TSC-1 with 1.54 pg/ml sensitivity.

SimpleStep ELISA® technology employs capture antibodies conjugated to an affinity tag that is recognized by the monoclonal antibody used to coat our SimpleStep ELISA® plates. This approach to sandwich ELISA allows the formation of the antibody-analyte sandwich complex in a single step, significantly reducing assay time. See the SimpleStep ELISA® protocol summary in the image section for further details. Our SimpleStep ELISA® technology provides several benefits:

- Single-wash protocol reduces assay time to 90 minutes or less
- High sensitivity, specificity and reproducibility from superior antibodies
- Fully validated in biological samples
- 96-wells plate breakable into 12 x 8 wells strips

A 384-well SimpleStep ELISA® microplate ([ab203359](#)) is available to use as an alternative to the 96-well microplate provided with SimpleStep ELISA® kits.

Notes

TSC-1 (Eotaxin 3 / CCL26) is a small cytokine within the CC chemokine family coded by a gene located on human chromosome 7. TSC-1 is also known by Macrophage inflammatory protein 4-alpha, Thymic stroma chemokine-1 and IMAC. It has known expression in heart, lung and ovarian tissue. TSC-1 expression can be induced by IL-4 stimulation which then can activate chemotactic activity of eosinophils and basophiles by binding to the cell surface chemokine receptor CCR3.

Platform

Pre-coated microplate (12 x 8 well strips)

Properties

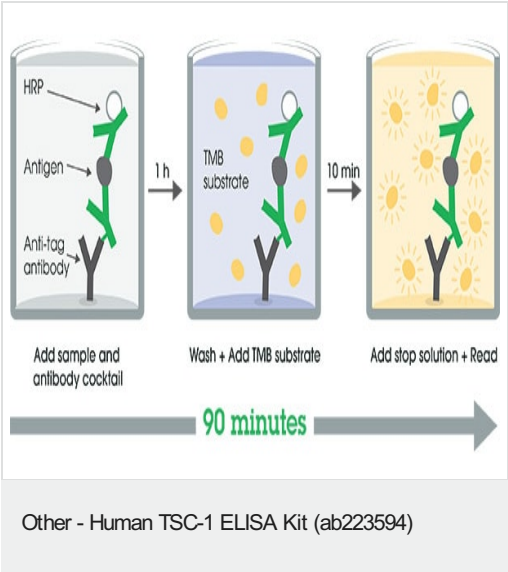
Storage instructions

Store at +4°C. Please refer to protocols.

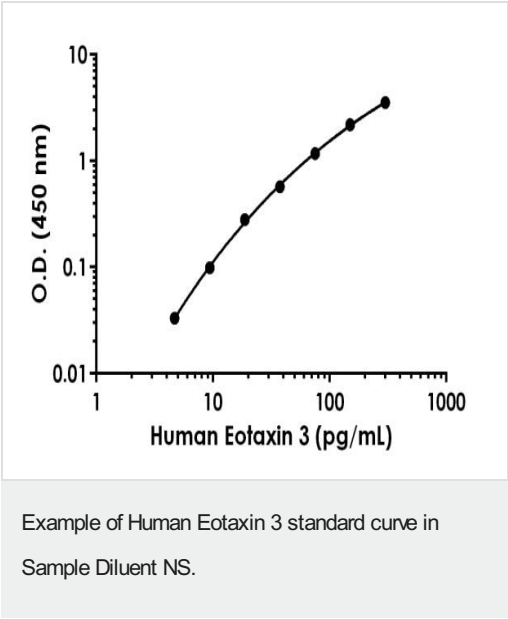
Components	1 x 96 tests
10X Wash Buffer PT (ab206977)	1 x 20ml
Antibody Diluent 4BI	1 x 6ml
10X Human TSC-1 Detector Antibody	1 x 600µl
10X Human TSC-1 Capture Antibody	1 x 600µl
Human TSC-1 Lyophilized Recombinant Protein	2 vials
Plate Seals	1 unit
Sample Diluent NS (ab193972)	1 x 50ml
SimpleStep Pre-Coated 96-Well Microplate (ab206978)	1 unit
Stop Solution	1 x 12ml

Components	1 x 96 tests
TMB Development Solution	1 x 12ml
Function	Chemotactic for eosinophils and basophils. Binds to CCR3.
Tissue specificity	Ubiquitously expressed at low levels in various tissues including heart and ovary.
Sequence similarities	Belongs to the intercrine beta (chemokine CC) family.
Cellular localization	Secreted.

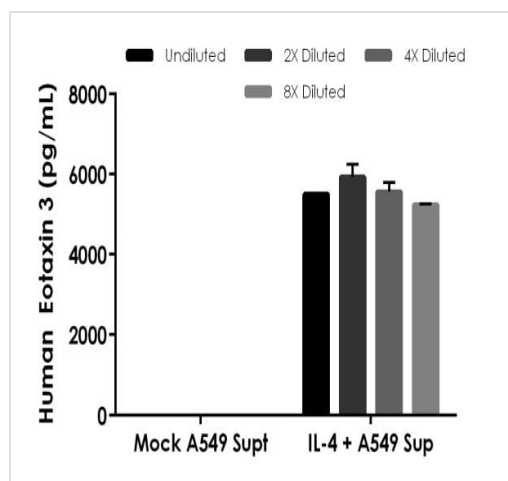
Images



SimpleStep ELISA technology allows the formation of the antibody-antigen complex in one single step, reducing assay time to 90 minutes. Add samples or standards and antibody mix to wells all at once, incubate, wash, and add your final substrate. See protocol for a detailed step-by-step guide.

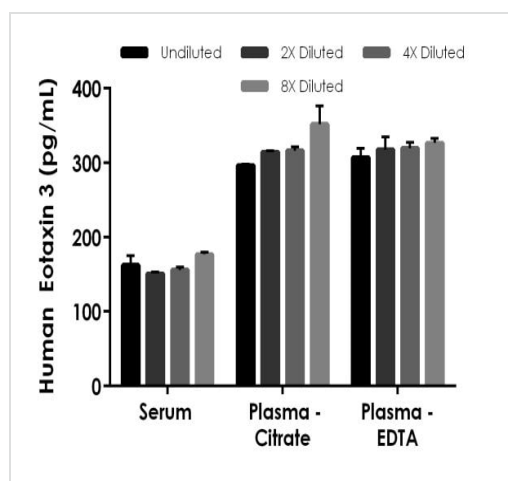


Background-subtracted data values (mean +/- SD) are graphed.



Interpolated concentrations of native Eotaxin 3 in human A549 cell culture supernatant samples.

The concentrations of Eotaxin 3 were measured in duplicates, interpolated from the Eotaxin 3 standard curves and corrected for sample dilution. Undiluted human A549 supernatant: 20%. The interpolated dilution factor corrected values are plotted (mean \pm SD, $n=2$). The mean Eotaxin 3 concentration was determined to be 5559.17 pg/mL.



Interpolated concentrations of spiked Eotaxin 3 in serum and plasma.

Interpolated concentrations of spiked Eotaxin 3 in human serum 50%, plasma (citrate) 50% and plasma (EDTA) 50%. The concentrations of Eotaxin 3 were measured in duplicate and interpolated from the Eotaxin 3 standard curve and corrected for sample dilution. The interpolated dilution factor corrected values are plotted (mean \pm SD, $n=2$). The mean Eotaxin 3 concentration was determined to be 161 pg/mL in human serum and 320.02 pg/mL in citrate plasma, 318.05 pg/ml in EDTA plasma.

Powered by
recombinant antibodies



Research with confidence
Consistent and reproducible results



Long-term and scalable supply
Recombinant technology



Success from the first experiment
Confirmed specificity



Ethical standards compliant
Animal-free production

Sandwich ELISA - Human TSC-1 ELISA Kit
(ab223594)

To learn more about the advantages of recombinant antibodies see [here](#).

Please note: All products are "FOR RESEARCH USE ONLY. NOT FOR USE IN DIAGNOSTIC PROCEDURES"

Our Abpromise to you: Quality guaranteed and expert technical support

- Replacement or refund for products not performing as stated on the datasheet
- Valid for 12 months from date of delivery
- Response to your inquiry within 24 hours
- We provide support in Chinese, English, French, German, Japanese and Spanish
- Extensive multi-media technical resources to help you
- We investigate all quality concerns to ensure our products perform to the highest standards

If the product does not perform as described on this datasheet, we will offer a refund or replacement. For full details of the Abpromise, please visit <https://www.abcam.com/abpromise> or contact our technical team.

Terms and conditions

- Guarantee only valid for products bought direct from Abcam or one of our authorized distributors