

2 References 2 Images

Overview

Product name	Human TSLP ELISA Kit
Detection method	Colorimetric
Precision	Intra-assay

Sample	n	Mean	SD	CV%
Overall				< 10%

				Inter-assay
Sample	n	Mean	SD	CV%
Overall				< 12%

Sample type	Cell culture supernatant, Serum, Plasma
Assay type	Sandwich (quantitative)
Sensitivity	< 3 pg/ml
Range	3.3 pg/ml - 800 pg/ml
Recovery	

Sample type	Average %	Range
Serum	117.6	100% - 129%
Plasma	130.7	120% - 139%
Cell culture media	85.21	70% - 90%

Assay time	5h 00m
Assay duration	Multiple steps standard assay
Species reactivity	Reacts with: Human
Product overview	Abcam's TSLP Human ELISA (Enzyme-Linked Immunosorbent Assay) kit is designed the quantitative measurement of Human TSLP in serum, plasma and cell culture supernatants.

This assay employs an antibody specific for Human TSLP coated on a 96-well plate. Standards and samples are pipetted into the wells and TSLP present in a sample is bound to the wells by the immobilized antibody. The wells are washed and biotinylated anti-Human TSLP antibody is added. After washing away unbound biotinylated antibody, HRP-conjugated streptavidin is pipetted to the wells. The wells are again washed, a TMB substrate solution is added to the wells and color develops in proportion to the amount of TSLP bound. The Stop Solution changes the color from blue to yellow, and the intensity of the color is measured at 450 nm.

Get higher sensitivity in only 90 minutes with Human TSLP ELISA Kit ([ab192149](#)) from our SimpleStep ELISA® range.

Notes Optimization may be required with urine samples.

Platform Microplate

Properties

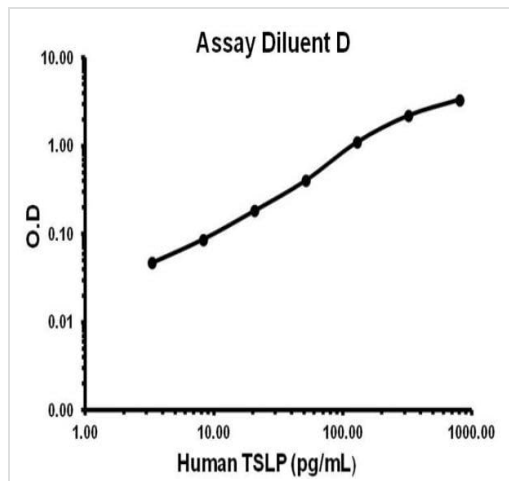
Storage instructions Store at -20°C. Please refer to protocols.

Components	1 x 96 tests
200X HRP-Streptavidin Concentrate	1 x 200µl
20X Wash Buffer	1 x 25ml
5X Assay Diluent B	1 x 15ml
5X Assay Diluent D	1 x 15ml
Detection Antibody TSLP : biotinylated anti-human TSLP	2 vials
Stop Solution	1 x 8ml
TMB One-Step Substrate Reagent	1 x 12ml
TSLP Standard Human (recombinant) (lyophilized)	2 vials
TSLP-coated Microplate	1 unit

Relevance The TSLP gene encodes a hemopoietic cytokine proposed to signal through a heterodimeric receptor complex composed of the thymic stromal lymphopoietin receptor and the IL-7R alpha chain. This mainly impacts myeloid cells and induces the release of T cell-attracting chemokines from monocytes and enhances the maturation of CD11c(+) dendritic cells. The protein promotes T helper type 2 (TH2) cell responses that are associated with immunity in various inflammatory diseases, including asthma, chronic obstructive pulmonary disease and allergic inflammation. The protein is therefore considered a potential therapeutic target for the treatment of these diseases. Alternative splicing of this gene results in multiple transcript variants.

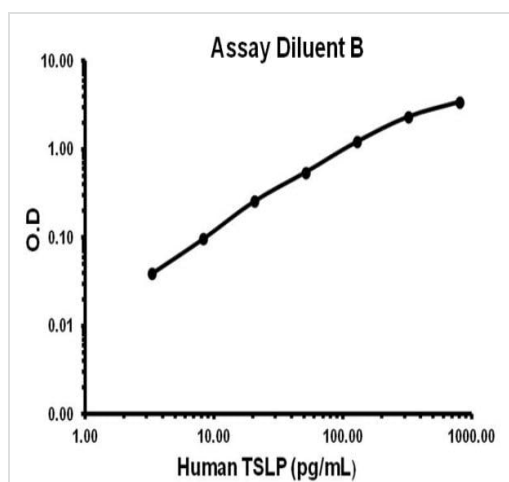
Cellular localization Secreted

Images



Representative standard curve using ab155444 - Assay Diluent D.

Typical Standard Curve



Representative standard curve using ab155444 - Assay Diluent B.

Typical Standard Curve

Please note: All products are "FOR RESEARCH USE ONLY. NOT FOR USE IN DIAGNOSTIC PROCEDURES"

Our Abpromise to you: Quality guaranteed and expert technical support

- Replacement or refund for products not performing as stated on the datasheet
- Valid for 12 months from date of delivery
- Response to your inquiry within 24 hours
- We provide support in Chinese, English, French, German, Japanese and Spanish
- Extensive multi-media technical resources to help you
- We investigate all quality concerns to ensure our products perform to the highest standards

If the product does not perform as described on this datasheet, we will offer a refund or replacement. For full details of the Abpromise, please visit <https://www.abcam.com/abpromise> or contact our technical team.

Terms and conditions

- Guarantee only valid for products bought direct from Abcam or one of our authorized distributors