

Product datasheet

JNK 1/2 (pT183/Y185 + Total) ELISA Kit ab176662

SimpleStep ELISA

★★★★★ [2 Abreviews](#) [9 References](#) [7 Images](#)

Overview

**Product name** JNK 1/2 (pT183/Y185 + Total) ELISA Kit

**Detection method** Colorimetric

<b>Precision</b>	Intra-assay				
	Sample	n	Mean	SD	CV%
	(pT183/Y185)	6			2.7%
	(Total)	6			2.8%
	Inter-assay				
	Sample	n	Mean	SD	CV%
	(pT183/Y185)	3			3.8%
	(Total)	3			3.3%

**Sample type** Cell Lysate, Tissue Homogenate

**Assay type** Semi-quantitative

**Assay time** 1h 30m

**Assay duration** One step assay

**Species reactivity** **Reacts with:** Mouse, Human

**Predicted to work with:** Rat 

**Product overview** Abcam's JNK1/2 (pT183/Y185) and JNK1/2 (Total) *in vitro* SimpleStep ELISA™ (Enzyme-Linked Immunosorbent Assay) kit is designed for the semi-quantitative measurement of JNK1/2 (pT183/Y185) and Total JNK1/2 protein in Human and mouse cells.

The SimpleStep ELISA™ employs an affinity tag labeled capture antibody and a reporter conjugated detector antibody which immunocapture the sample analyte in solution. This entire complex (capture antibody/analyte/detector antibody) is in turn immobilized via immunoaffinity of an anti-tag antibody coating the well. To perform the assay, samples or standards are added to the wells, followed by the antibody mix. After incubation, the wells are washed to remove unbound

material. TMB substrate is added and during incubation is catalyzed by HRP, generating blue coloration. This reaction is then stopped by addition of Stop Solution completing any color change from blue to yellow. Signal is generated proportionally to the amount of bound analyte and the intensity is measured at 450 nm. Optionally, instead of the endpoint reading, development of TMB can be recorded kinetically at 600 nm.

**As of October 2019, this kit was reformulated with new antibodies to maintain continued long term supply.**

## Notes

**Estimated sensitivity:** Phospho-JNK1/2 (Thr183/Tyr185): 0.5 ng/mL (tested with recombinant protein), Total JNK1/2: 0.1 ng/mL (tested with recombinant protein)

**Range:** Phospho-JNK1/2 (Thr183/Tyr185): 1-100 ng/mL, Total JNK1/2: 0.2-20 ng/mL

Abcam has not and does not intend to apply for the REACH Authorisation of customers' uses of products that contain European Authorisation list (Annex XIV) substances.

It is the responsibility of our customers to check the necessity of application of REACH Authorisation, and any other relevant authorisations, for their intended uses.

## Platform

Microplate

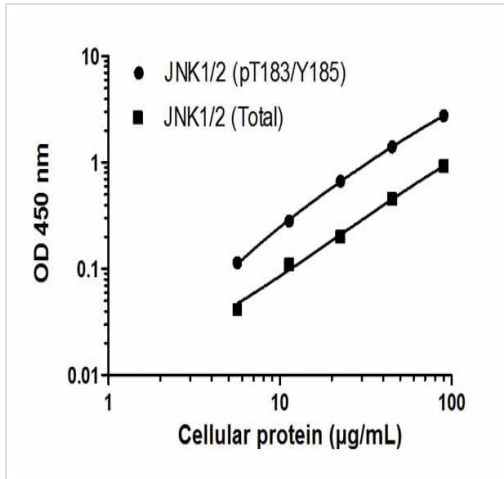
## Properties

### Storage instructions

Store at +4°C. Please refer to protocols.

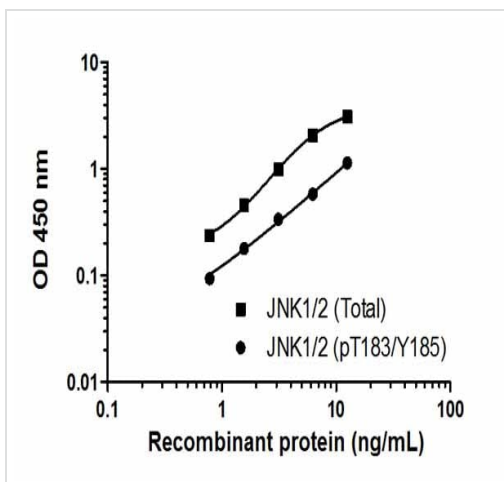
Components	1 x 96 tests	1 x 96 tests
10X Wash Buffer PT	1 x 15ml	1 x 15ml
50X Cell Extraction Enhancer Solution	1 x 1ml	1 x 1ml
5X Cell Extraction Buffer PTR	1 x 12ml	1 x 12ml
JNK1/2 (pT183/Y185) Capture Antibody	1 x 1.5ml	1 x 1.5ml
JNK1/2 (pT183/Y185) Detector Antibody	1 x 1.5ml	1 x 1.5ml
JNK1/2 (Total) Capture Antibody	1 x 1.5ml	1 x 1.5ml
JNK1/2 (Total) Detector Antibody	1 x 1.5ml	1 x 1.5ml
Lyophilized JNK1/2 Control Lysate	1 vial	1 vial
Plate Seal	1 unit	1 unit
SimpleStep Pre-Coated 96-Well Microplate (ab206978)	1 unit	1 unit
Stop Solution	1 x 12ml	1 x 12ml
TMB Substrate	1 x 12ml	1 x 12ml

## Images



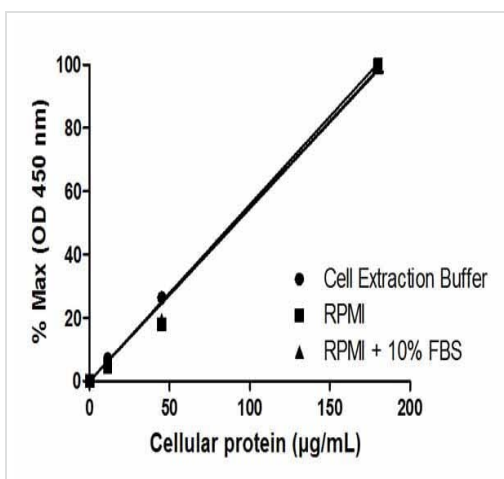
Typical cell lysate dilution series

Example of a typical JNK1/2 (pT183/Y185) and JNK1/2 (Total) cell lysate dilution series. Background-subtracted data values (mean  $\pm$  SD) are graphed.



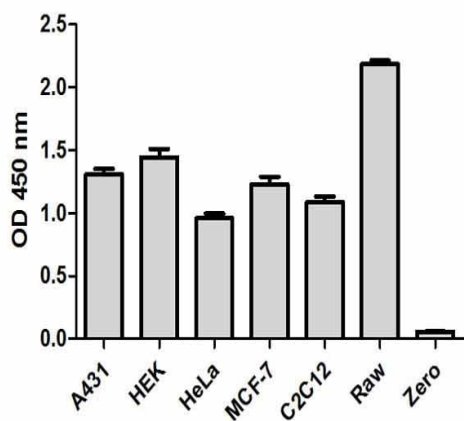
Typical recombinant protein standard curve

Example of a typical JNK1/2 (pT183/Y185) recombinant protein standard curve. The proportion of total protein that is phosphorylated is unknown - data is indicative only. Background-subtracted data values (mean  $\pm$  SD) are graphed.



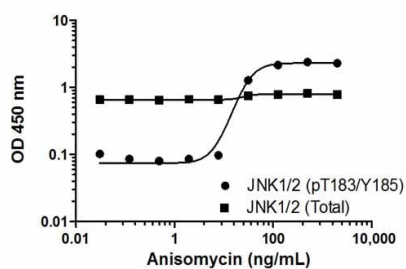
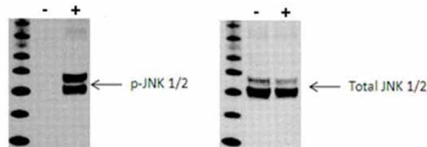
Linearity of dilution

Linearity of dilution in representative sample matrices. Cellular lysates were prepared at 3 concentrations in common media containing 1X Cell Extraction Buffer PTR. Data from duplicate measurements of JNK1/2 (pT183/Y185) are normalized and plotted.



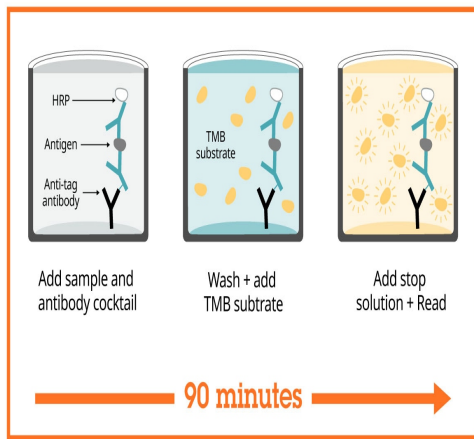
Comparison of JNK1/2 expression in different cell lines

Cell line analysis for Total JNK1/2 from 200 µg/mL preparations of cell extracts. Data from triplicate measurements (mean  $\pm$  SD) are plotted and compared to 1X Cell Extraction Buffer PTR (zero).



JNK1/2 (pT183/Y185) phosphorylation in response to anisomycin treatment

Induction of JNK1/2 (pT183/Y185) phosphorylation in HeLa cells in response to anisomycin treatment. HeLa cells were cultured in 96-well tissue culture plates and treated (30 min) with a dose-range of anisomycin before cell lysis. Data from quadruplicate measurements of JNK1/2 (pT183/Y185) are plotted and compared against Total JNK1/2 protein levels. Comparative JNK1/2 (pT183/Y185) and JNK1/2 (Total) data also shown by Western Blot.



Sandwich ELISA - JNK 1/2 (pT183/Y185 + Total)  
ELISA Kit (ab176662)

SimpleStep ELISA technology allows the formation of the antibody-antigen complex in one single step, reducing assay time to 90 minutes. Add samples or standards and antibody mix to wells all at once, incubate, wash, and add your final substrate. See protocol for a detailed step-by-step guide.

#### Get more done with SimpleStep ELISA



**Easy to use**  
Single-wash 90-minute protocol



**Flexible**  
Matched antibody pairs available



**Precision antibodies**  
High sensitivity, specificity and reproducibility



**Scalable**  
Now in 10-pack and 384-well formats

Sandwich ELISA - JNK 1/2 (pT183/Y185 + Total)  
ELISA Kit (ab176662)

To learn more about the advantages of SimpleStep ELISA® kits see [here](#).

**Please note:** All products are "FOR RESEARCH USE ONLY. NOT FOR USE IN DIAGNOSTIC PROCEDURES"

#### Our Abpromise to you: Quality guaranteed and expert technical support

- Replacement or refund for products not performing as stated on the datasheet
- Valid for 12 months from date of delivery
- Response to your inquiry within 24 hours
- We provide support in Chinese, English, French, German, Japanese and Spanish
- Extensive multi-media technical resources to help you
- We investigate all quality concerns to ensure our products perform to the highest standards

If the product does not perform as described on this datasheet, we will offer a refund or replacement. For full details of the Abpromise, please visit <https://www.abcam.com/abpromise> or contact our technical team.

## Terms and conditions

---

- Guarantee only valid for products bought direct from Abcam or one of our authorized distributors