

Met (pY1234/pY1235) ELISA Kit ab126450

4 Images

Overview

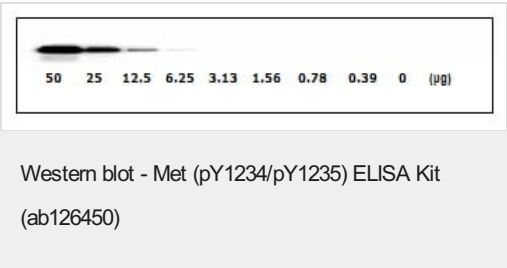
Product name	Met (pY1234/pY1235) ELISA Kit
Detection method	Colorimetric
Sample type	Cell Lysate
Assay type	Semi-quantitative
Assay time	5h 00m
Assay duration	Multiple steps standard assay
Species reactivity	<b>Reacts with:</b> Mouse, Human
Product overview	<p>ab126450 is a very rapid, convenient and sensitive assay kit that can monitor the activation or function of important biological pathways in Human and Mouse cell lysates. By determining phosphorylated Met protein in your experimental model system, you can verify pathway activation in your cell lysates. You can simultaneously measure numerous different cell lysates without spending excess time and effort in performing a Western Blotting analysis.</p> <p>This Sandwich ELISA kit is an in vitro enzyme-linked immunosorbent assay for the measurement of Human and Mouse phospho-Met (Tyr1234/1235). An anti-pan Met antibody has been coated onto a 96-well plate. Samples are pipetted into the wells and Met present in a sample is bound to the wells by the immobilized antibody. The wells are washed and anti-Met (Tyr1234/1235) antibody is used to detect phosphorylated Met (Tyr1234/1235). After washing away unbound antibody, HRP-conjugated anti-Rabbit IgG is pipetted to the wells. The wells are again washed, a TMB substrate solution is added to the wells and color develops in proportion to the amount of Met (Tyr1234/1235) bound. The Stop Solution changes the color from blue to yellow, and the intensity of the color is measured at 450 nm.</p>
Notes	<p>Abcam has not and does not intend to apply for the REACH Authorisation of customers' uses of products that contain European Authorisation list (Annex XIV) substances.</p> <p>It is the responsibility of our customers to check the necessity of application of REACH Authorisation, and any other relevant authorisations, for their intended uses.</p>
Platform	Microplate

Properties

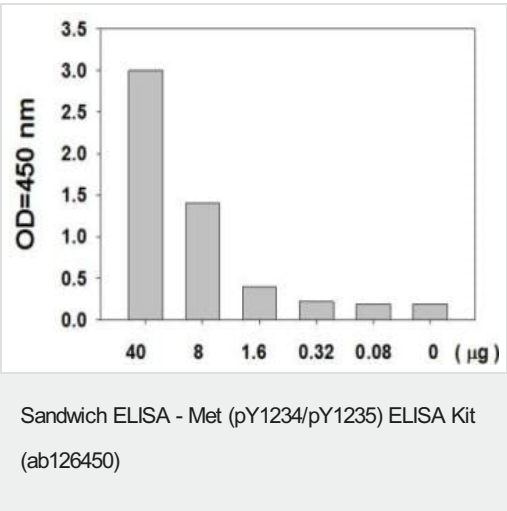
Storage instructions	Store at -20°C. Please refer to protocols.
----------------------	--

Components	1 x 96 tests
1000X HRP-conjugated anti-rabbit IgG	1 x 25µl
20X Wash Buffer	1 x 25ml
2X Cell Lysis Buffer	1 x 5ml
5X Assay Diluent	1 x 15ml
Detection Antibody Met (Y1234/1235)	2 vials
Met Microplate (12 strips x 8 wells) coated with anti-pan Met antibody	1 unit
Positive Control: lyophilized powder from H1993 cell lysate	1 vial
Stop Solution	1 x 8ml
TMB One-Step Substrate Reagent	1 x 12ml

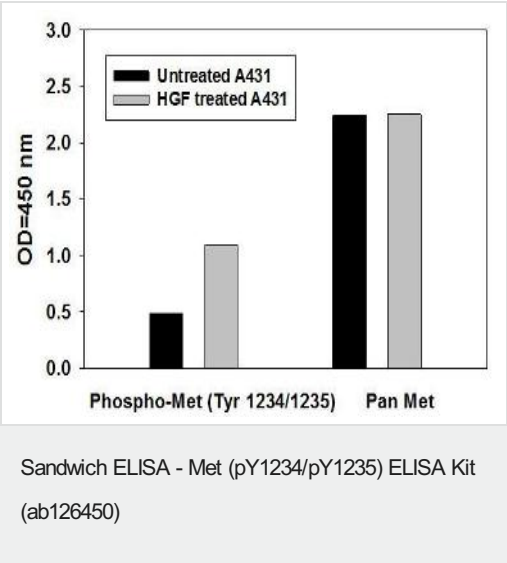
<b>Function</b>	<p>Receptor for hepatocyte growth factor and scatter factor. Has a tyrosine-protein kinase activity. Functions in cell proliferation, scattering, morphogenesis and survival.</p>
<b>Involvement in disease</b>	<p>Note=Activation of MET after rearrangement with the TPR gene produces an oncogenic protein. Note=Defects in MET may be associated with gastric cancer.</p> <p>Defects in MET are a cause of hepatocellular carcinoma (HCC) [MIM:114550].</p> <p>Defects in MET are a cause of renal cell carcinoma papillary (RCCP) [MIM:605074]. It is a subtype of renal cell carcinoma tending to show a tubulo-papillary architecture formed by numerous, irregular, finger-like projections of connective tissue. Renal cell carcinoma is a heterogeneous group of sporadic or hereditary carcinoma derived from cells of the proximal renal tubular epithelium. It is subclassified into common renal cell carcinoma (clear cell, non-papillary carcinoma), papillary renal cell carcinoma, chromophobe renal cell carcinoma, collecting duct carcinoma with medullary carcinoma of the kidney, and unclassified renal cell carcinoma.</p> <p>Note=A common allele in the promoter region of the MET shows genetic association with susceptibility to autism in some families. Functional assays indicate a decrease in MET promoter activity and altered binding of specific transcription factor complexes.</p> <p>Note=MET activating mutations may be involved in the development of a highly malignant, metastatic syndrome known as cancer of unknown primary origin (CUP) or primary occult malignancy. Systemic neoplastic spread is generally a late event in cancer progression. However, in some instances, distant dissemination arises at a very early stage, so that metastases reach clinical relevance before primary lesions. Sometimes, the primary lesions cannot be identified in spite of the progresses in the diagnosis of malignancies.</p>
<b>Sequence similarities</b>	<p>Belongs to the protein kinase superfamily. Tyr protein kinase family.</p> <p>Contains 3 IPT/TIG domains.</p> <p>Contains 1 protein kinase domain.</p> <p>Contains 1 Sema domain.</p>
<b>Domain</b>	<p>The kinase domain is involved in SPSB1 binding.</p>
<b>Post-translational modifications</b>	<p>Dephosphorylated by PTPRJ at Tyr-1349 and Tyr-1365.</p>
<b>Cellular localization</b>	<p>Membrane.</p>



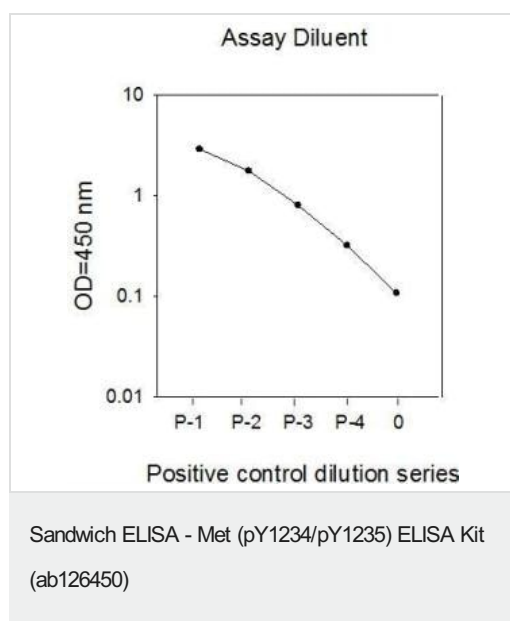
H1993 cells were cultured at 37°C for 4 days. Solubilize cells at 4 x 10<sup>7</sup> cells/ml in Cell Lysate Buffer. Serial dilutions of lysates were analyzed by Western blot.



H1993 cells were cultured at 37°C for 4 days. Solubilize cells at 4 x 10<sup>7</sup> cells/ml in Cell Lysate Buffer. Serial dilutions of lysates were analyzed using ab126450.



A431 cells were treated or untreated with 50 ng/ml recombinant Human HGF for 5 min. Cell lysates were analyzed using ab126450.



H1993 cells were cultured at 37°C for 4 days. Solubilize cells at  $4 \times 10^7$  cells/ml in Cell Lysate Buffer. Serial dilutions of lysates were analyzed using ab126450.

**Please note:** All products are "FOR RESEARCH USE ONLY. NOT FOR USE IN DIAGNOSTIC PROCEDURES"

### Our Abpromise to you: Quality guaranteed and expert technical support

- Replacement or refund for products not performing as stated on the datasheet
- Valid for 12 months from date of delivery
- Response to your inquiry within 24 hours
- We provide support in Chinese, English, French, German, Japanese and Spanish
- Extensive multi-media technical resources to help you
- We investigate all quality concerns to ensure our products perform to the highest standards

If the product does not perform as described on this datasheet, we will offer a refund or replacement. For full details of the Abpromise, please visit <https://www.abcam.com/abpromise> or contact our technical team.

### Terms and conditions

- Guarantee only valid for products bought direct from Abcam or one of our authorized distributors