

Mouse c-Kit ELISA Kit (CD117) ab203361

Recombinant SimpleStep ELISA<sup>®</sup>

7 Images

Overview

Product name	Mouse c-Kit ELISA Kit (CD117)				
Detection method	Colorimetric				
Precision	Intra-assay				
	Sample	n	Mean	SD	CV%
	Overall	5			2.6%
	Inter-assay				
	Sample	n	Mean	SD	CV%
	Overall	3			5.4%
Sample type	Cell culture supernatant, Serum, Cell culture extracts, Tissue Extracts, Hep Plasma, EDTA Plasma, Cit plasma				
Assay type	Sandwich (quantitative)				
Sensitivity	30 pg/ml				
Range	0.23 ng/ml - 15 ng/ml				
Recovery	Sample specific recovery				
	Sample type		Average %	Range	
	Cell culture supernatant		94	92% - 94%	
	Serum		118	115% - 120%	
	Hep Plasma		109	104% - 114%	
	EDTA Plasma		105	93% - 144%	
	Cit plasma		110	103% - 119%	
	Mouse brain extract		104	103% - 106%	

<b>Assay time</b>	1h 30m
<b>Assay duration</b>	One step assay
<b>Species reactivity</b>	<b>Reacts with:</b> Mouse <b>Does not react with:</b> Sheep, Goat, Cow, Pig
<b>Product overview</b>	<p>Mouse c-Kit ELISA Kit (CD117) (ab203361) is a single-wash 90 min sandwich ELISA designed for the quantitative measurement of c-Kit (CD117) protein in cell culture extracts, cell culture supernatant, cit plasma, edta plasma, hep plasma, serum, and tissue extracts. It uses our proprietary SimpleStep ELISA® technology. Quantitate Mouse c-Kit (CD117) with 30 pg/ml sensitivity.</p> <p>SimpleStep ELISA® technology employs capture antibodies conjugated to an affinity tag that is recognized by the monoclonal antibody used to coat our SimpleStep ELISA® plates. This approach to sandwich ELISA allows the formation of the antibody-analyte sandwich complex in a single step, significantly reducing assay time. See the SimpleStep ELISA® protocol summary in the image section for further details. Our SimpleStep ELISA® technology provides several benefits:</p> <ul style="list-style-type: none"> <li>- Single-wash protocol reduces assay time to 90 minutes or less</li> <li>- High sensitivity, specificity and reproducibility from superior antibodies</li> <li>- Fully validated in biological samples</li> <li>- 96-wells plate breakable into 12 x 8 wells strips</li> </ul> <p>A 384-well SimpleStep ELISA® microplate (<a href="#">ab203359</a>) is available to use as an alternative to the 96-well microplate provided with SimpleStep ELISA® kits.</p>
<b>Notes</b>	<p>c-Kit (CD117) is a member of the type III subfamily of receptor tyrosine kinases and is the cellular receptor for stem cell factor. Kit is essential for cell survival and proliferation, stem cell maintenance, mast cell development, melanogenesis, cellular migration, hematopoiesis, and gametogenesis. Mutations in human c-Kit are associated with gastrointestinal stromal tumors, piebaldism, acute myelogenous leukemia, and mast cell disease.</p> <p>Abcam has not and does not intend to apply for the REACH Authorisation of customers' uses of products that contain European Authorisation list (Annex XIV) substances.</p> <p>It is the responsibility of our customers to check the necessity of application of REACH Authorisation, and any other relevant authorisations, for their intended uses.</p>
<b>Platform</b>	Microplate (12 x 8 well strips)

## Properties

**Storage instructions** Store at +4°C. Please refer to protocols.

Components	1 x 96 tests
10X Mouse c-Kit Capture Antibody	1 x 600µl
10X Mouse c-Kit Detector Antibody	1 x 600µl
10X Wash Buffer PT (ab206977)	1 x 20ml

Components	1 x 96 tests
50X Cell Extraction Enhancer Solution (ab193971)	1 x 1ml
5X Cell Extraction Buffer PTR (ab193970)	1 x 10ml
Antibody Diluent CPI - HAMA Blocker (ab193969)	1 x 6ml
Mouse C-Kit Lyophilized Recombinant Protein	2 vials
Plate Seals	1 unit
Sample Diluent NS (ab193972)	1 x 50ml
SimpleStep Pre-Coated 96-Well Microplate (ab206978)	1 unit
Stop Solution	1 x 12ml
TMB Development Solution	1 x 12ml

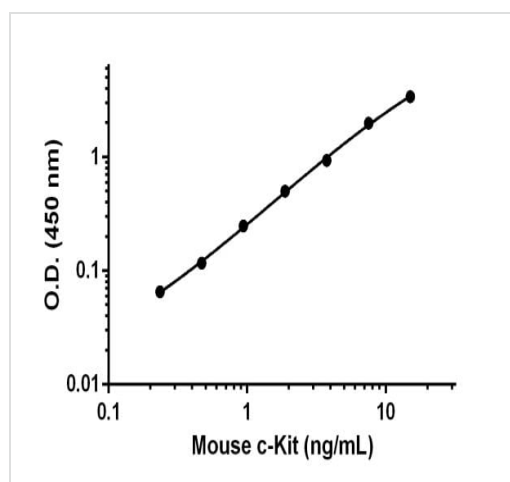
## Relevance

KIT encodes the human homolog of the proto-oncogene c-kit. c-kit was first identified as the cellular homolog of the feline sarcoma viral oncogene v-kit. KIT is a type 3 transmembrane receptor for MGF (mast cell growth factor, also known as stem cell factor). Mutations in KIT are associated with gastrointestinal stromal tumors, mast cell disease, acute myelogenous leukemia, and piebaldism.

## Cellular localization

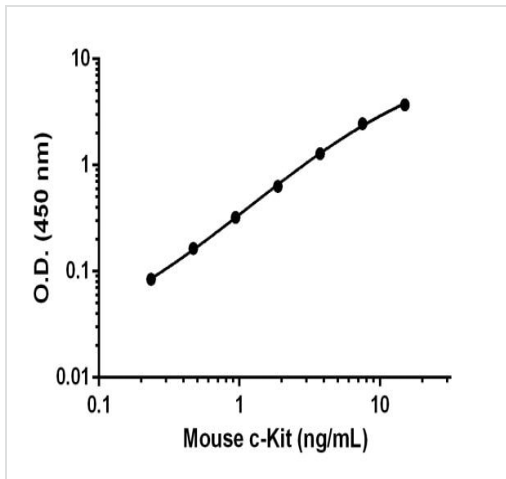
Cell Membrane; single-pass type I membrane protein

## Images



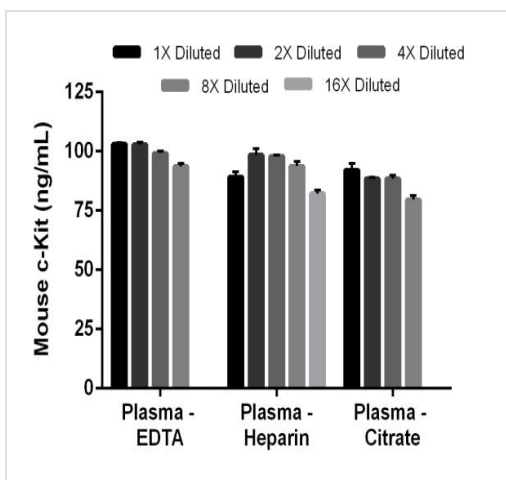
Example of c-KIT standard curve prepared in Sample Diluent NS.

Background-subtracted data values (mean  $\pm$  SD) are graphed.



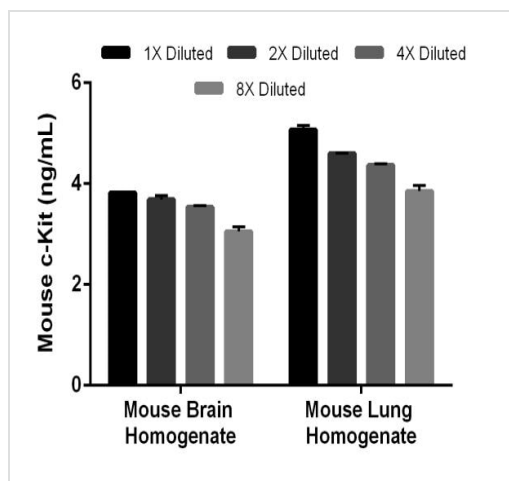
Background-subtracted data values (mean  $\pm$  SD) are graphed.

Example of c-KIT standard curve prepared in 1X Cell Extraction buffer PTR.



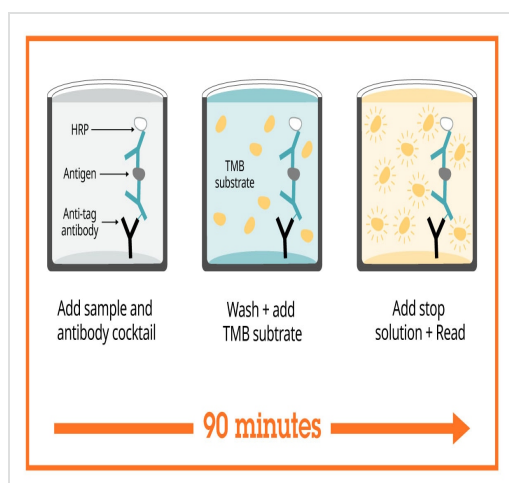
The concentrations of c-Kit were measured in duplicate and interpolated from the c-Kit standard curve and corrected for sample dilution. The interpolated dilution factor corrected values are plotted (mean  $\pm$  SD,  $n=2$ ).

Interpolated concentrations of c-Kit in mouse plasma (EDTA, heparin and citrate).



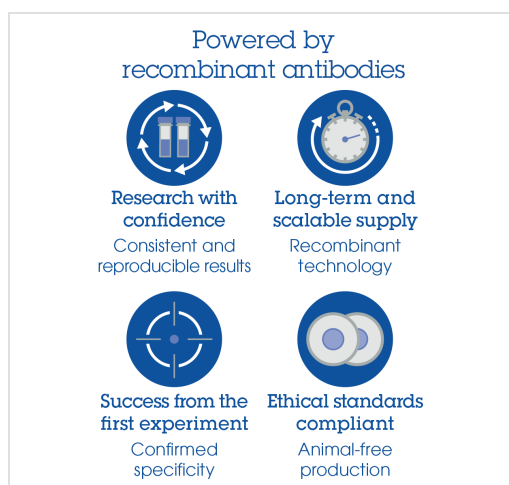
Interpolated concentrations of c-Kit in mouse brain and lung extract.

The concentrations of c-Kit were measured in duplicate and interpolated from the c-Kit standard curve and corrected for sample dilution. The interpolated dilution factor corrected values are plotted (mean  $\pm$  SD,  $n=2$ ). Interpolated values of c-Kit are plotted based on an extract load of 200  $\mu$ g/mL.



Sandwich ELISA - Mouse c-Kit ELISA Kit (CD117) (ab203361)

SimpleStep ELISA technology allows the formation of the antibody-antigen complex in one single step, reducing assay time to 90 minutes. Add samples or standards and antibody mix to wells all at once, incubate, wash, and add your final substrate. See protocol for a detailed step-by-step guide.



Sandwich ELISA - Mouse c-Kit ELISA Kit (CD117) (ab203361)

To learn more about the advantages of recombinant antibodies see [here](#).

**Get more done with  
SimpleStep ELISA**



**Easy to use**

Single-wash 90-minute protocol



**Flexible**

Matched antibody pairs available



**Precision antibodies**

High sensitivity, specificity and reproducibility



**Scalable**

Now in 10-pack and 384-well formats

To learn more about the advantages of SimpleStep ELISA® kits see [here](#).

Sandwich ELISA - Mouse c-Kit ELISA Kit (CD117)  
(ab203361)

**Please note:** All products are "FOR RESEARCH USE ONLY. NOT FOR USE IN DIAGNOSTIC PROCEDURES"

### Our Abpromise to you: Quality guaranteed and expert technical support

---

- Replacement or refund for products not performing as stated on the datasheet
- Valid for 12 months from date of delivery
- Response to your inquiry within 24 hours
- We provide support in Chinese, English, French, German, Japanese and Spanish
- Extensive multi-media technical resources to help you
- We investigate all quality concerns to ensure our products perform to the highest standards

If the product does not perform as described on this datasheet, we will offer a refund or replacement. For full details of the Abpromise, please visit <https://www.abcam.com/abpromise> or contact our technical team.

### Terms and conditions

---

- Guarantee only valid for products bought direct from Abcam or one of our authorized distributors