

Mouse Calreticulin ELISA Kit ab284624

Recombinant SimpleStep ELISA®

5 Images

Overview

| | | | | | |
|--------------------|---|-----------|------|------------|-----|
| Product name | Mouse Calreticulin ELISA Kit | | | | |
| Detection method | Colorimetric | | | | |
| Precision | Intra-assay | | | | |
| | Sample | n | Mean | SD | CV% |
| | Extract | 8 | | | 5% |
| | Inter-assay | | | | |
| | Sample | n | Mean | SD | CV% |
| | Extract | 3 | | | 6% |
| Sample type | Cell Lysate | | | | |
| Assay type | Sandwich (quantitative) | | | | |
| Sensitivity | 49 pg/ml | | | | |
| Range | 140.6 pg/ml - 9000 pg/ml | | | | |
| Recovery | Sample specific recovery | | | | |
| | Sample type | Average % | | Range | |
| | Cell Lysate | 96 | | 86% - 119% | |
| Assay time | 1h 30m | | | | |
| Assay duration | One step assay | | | | |
| Species reactivity | Reacts with: Mouse | | | | |
| Product overview | Mouse Calreticulin ELISA kit (ab284624) is a single-wash 90 min sandwich ELISA designed for the quantitative measurement of Mouse Calreticulin protein in mouse cell and tissue extract samples. It uses our proprietary SimpleStep ELISA® technology. Quantitate Mouse Calreticulin with 49 pg/mL sensitivity. | | | | |

SimpleStep ELISA® technology employs capture antibodies conjugated to an affinity tag that is

recognized by the monoclonal antibody used to coat our SimpleStep ELISA® plates. This approach to sandwich ELISA allows the formation of the antibody-analyte sandwich complex in a single step, significantly reducing assay time. See the SimpleStep ELISA® protocol summary in the image section for further details. Our SimpleStep ELISA® technology provides several benefits:

- Single-wash protocol reduces assay time to 90 minutes or less
- High sensitivity, specificity and reproducibility from superior antibodies
- Fully validated in biological samples
- 96-wells plate breakable into 12 x 8 wells strips

A 384-well SimpleStep ELISA® microplate ([ab203359](#)) is available to use as an alternative to the 96-well microplate provided with SimpleStep ELISA® kits.

Notes

Abcam has not and does not intend to apply for the REACH Authorisation of customers' uses of products that contain European Authorisation list (Annex XIV) substances. It is the responsibility of our customers to check the necessity of application of REACH Authorisation, and any other relevant authorisations, for their intended uses.

Platform Pre-coated microplate (12 x 8 well strips)

Properties

Storage instructions Store at +4°C. Please refer to protocols.

| Components | 1 x 96 tests |
|---|--------------|
| 10X Mouse Calreticulin Capture Antibody | 1 x 600µl |
| 10X Mouse Calreticulin Detector Antibody | 1 x 600µl |
| 10X Wash Buffer PT (ab206977) | 1 x 20ml |
| 50X Cell Extraction Enhancer Solution (ab193971) | 1 x 1ml |
| 5X Cell Extraction Buffer PTR (ab193970) | 1 x 10ml |
| Antibody Diluent CPI - HAMA Blocker (ab193969) | 1 x 6ml |
| Mouse Calreticulin Lyophilized Recombinant Protein | 2 vials |
| Plate Seals | 1 unit |
| Sample Diluent NS (ab193972) | 1 x 12ml |
| SimpleStep Pre-Coated 96-Well Microplate (ab206978) | 1 unit |
| Stop Solution | 1 x 12ml |
| TMB Development Solution | 1 x 12ml |

Function Molecular calcium-binding chaperone promoting folding, oligomeric assembly and quality control

in the ER via the calreticulin/calnexin cycle. This lectin interacts transiently with almost all of the monoglucosylated glycoproteins that are synthesized in the ER. Interacts with the DNA-binding domain of NR3C1 and mediates its nuclear export.

Sequence similarities

Belongs to the calreticulin family.

Domain

Can be divided into a N-terminal globular domain, a proline-rich P-domain forming an elongated arm-like structure and a C-terminal acidic domain. The P-domain binds one molecule of calcium with high affinity, whereas the acidic C-domain binds multiple calcium ions with low affinity.

The interaction with glycans occurs through a binding site in the globular lectin domain.

The zinc binding sites are localized to the N-domain.

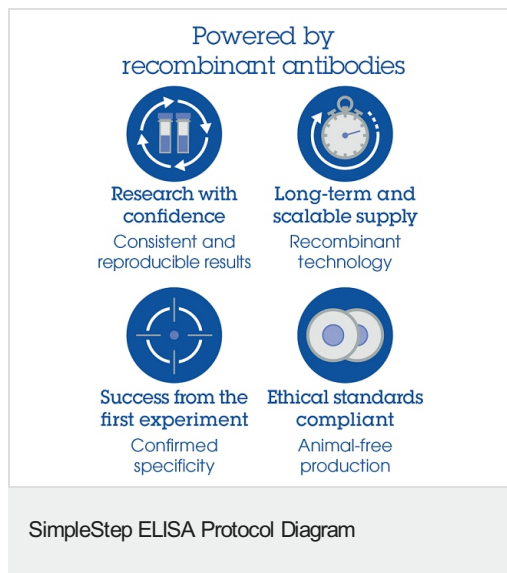
Associates with PDIA3 through the tip of the extended arm formed by the P-domain.

Cellular localization

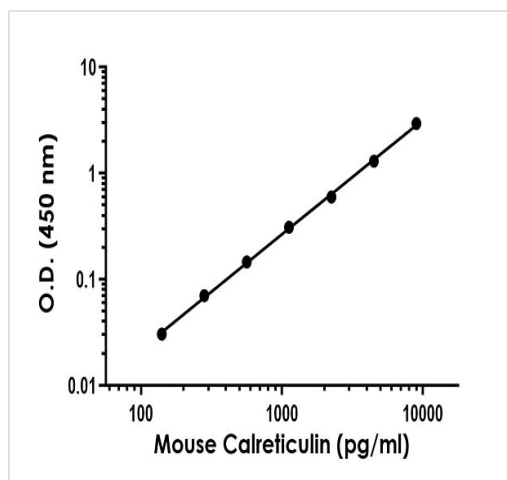
Endoplasmic reticulum lumen. Cytoplasm > cytosol. Secreted > extracellular space > extracellular matrix. Cell surface. Also found in cell surface (T cells), cytosol and extracellular matrix.

Associated with the lytic granules in the cytolytic T-lymphocytes.

Images

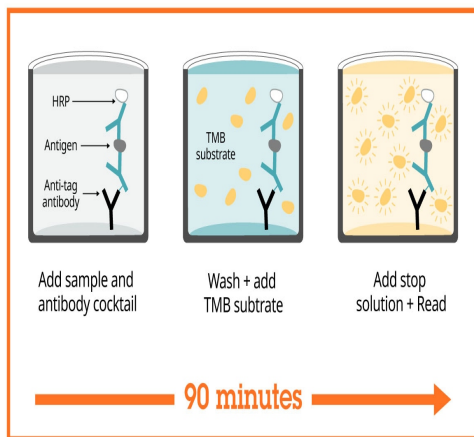


To learn more about the advantages of recombinant antibodies see [here](#).



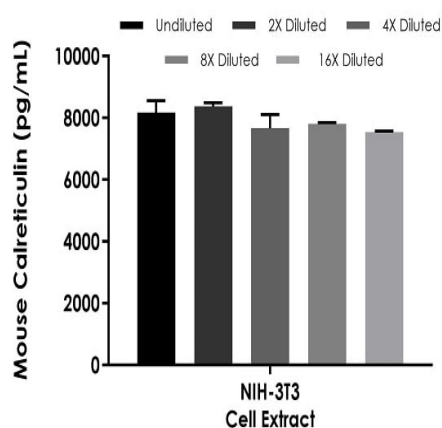
Example of mouse Calreticulin standard curve. Background-subtracted data values (mean \pm SD) are graphed.

Example of mouse Calreticulin standard curve in 1X Cell Extraction Buffer PTR.



Sandwich ELISA - Mouse Calreticulin ELISA Kit
(ab284624)

SimpleStep ELISA technology allows the formation of the antibody-antigen complex in one single step, reducing assay time to 90 minutes. Add samples or standards and antibody mix to wells all at once, incubate, wash, and add your final substrate. See protocol for a detailed step-by-step guide.



Interpolated concentrations of mouse Calreticulin in NIH3T3 cell extract.

Interpolated concentration of native Calreticulin was measured in duplicate at different sample concentrations. Undiluted samples are 200 ug/mL. The interpolated dilution factor corrected values are plotted (mean +/- SD, n=2). Sample dilutions are made in 1X Cell Extraction Buffer PTR.

Get more done with SimpleStep ELISA

- Easy to use**
Single-wash 90-minute protocol
- Flexible**
Matched antibody pairs available
- Precision antibodies**
High sensitivity, specificity and reproducibility
- Scalable**
Now in 10-pack and 384-well formats

Sandwich ELISA - Mouse Calreticulin ELISA Kit
(ab284624)

To learn more about the advantages of SimpleStep ELISA® kits see [here](#).

Please note: All products are "FOR RESEARCH USE ONLY. NOT FOR USE IN DIAGNOSTIC PROCEDURES"

Our Abpromise to you: Quality guaranteed and expert technical support

- Replacement or refund for products not performing as stated on the datasheet
- Valid for 12 months from date of delivery
- Response to your inquiry within 24 hours

- We provide support in Chinese, English, French, German, Japanese and Spanish
- Extensive multi-media technical resources to help you
- We investigate all quality concerns to ensure our products perform to the highest standards

If the product does not perform as described on this datasheet, we will offer a refund or replacement. For full details of the Abpromise, please visit <https://www.abcam.com/abpromise> or contact our technical team.

Terms and conditions

- Guarantee only valid for products bought direct from Abcam or one of our authorized distributors