

### Mouse CCL27 ELISA Kit (CTACK) ab202406

Recombinant SimpleStep ELISA

[6 Images](#)

#### Overview

**Product name** Mouse CCL27 ELISA Kit (CTACK)

**Detection method** Colorimetric

#### Precision

Intra-assay

Sample	n	Mean	SD	CV%
overall	8			5.34%

Inter-assay

Sample	n	Mean	SD	CV%
overall	3			10.94%

**Sample type**

Cell culture supernatant, Serum, Hep Plasma, EDTA Plasma, Cit plasma

**Assay type**

Sandwich (quantitative)

**Sensitivity**

9.3 pg/ml

**Range**

23.4 pg/ml - 1500 pg/ml

#### Recovery

Sample specific recovery

Sample type	Average %	Range
Serum	110	100% - 116%
Cell culture media	116	103% - 128%
Hep Plasma	97	71% - 114%
EDTA Plasma	128	105% - 146%
Cit plasma	107	81% - 124%

**Assay time**

1h 30m

**Assay duration**

One step assay

**Species reactivity****Reacts with:** Mouse**Product overview**

Mouse CCL27 ELISA Kit (CTACK) (ab202406) is a single-wash 90 min sandwich ELISA designed for the quantitative measurement of CCL27 (CTACK) protein in cell culture supernatant, cit plasma, edta plasma, hep plasma, and serum. It uses our proprietary SimpleStep ELISA® technology. Quantitate Mouse CCL27 (CTACK) with 9.3 pg/ml sensitivity.

SimpleStep ELISA® technology employs capture antibodies conjugated to an affinity tag that is recognized by the monoclonal antibody used to coat our SimpleStep ELISA® plates. This approach to sandwich ELISA allows the formation of the antibody-analyte sandwich complex in a single step, significantly reducing assay time. See the SimpleStep ELISA® protocol summary in the image section for further details. Our SimpleStep ELISA® technology provides several benefits:

- Single-wash protocol reduces assay time to 90 minutes or less
- High sensitivity, specificity and reproducibility from superior antibodies
- Fully validated in biological samples
- 96-wells plate breakable into 12 x 8 wells strips

A 384-well SimpleStep ELISA® microplate ([ab203359](#)) is available to use as an alternative to the 96-well microplate provided with SimpleStep ELISA® kits.

**Notes**

CCL27 is a chemotactic factor that attracts skin-associated memory T-lymphocytes, and binds to CCR10. It may play a role in cell migration during embryogenesis, and may mediate lymphocyte homing to cutaneous sites. Nuclear forms of CCL27 may facilitate cellular migration by inducing cytoskeletal relaxation. There is evidence that CCL27 is strongly upregulated in atopic dermatitis, contact dermatitis, and psoriasis skin lesions.

**Platform**

Pre-coated microplate (12 x 8 well strips)

**Properties****Storage instructions**

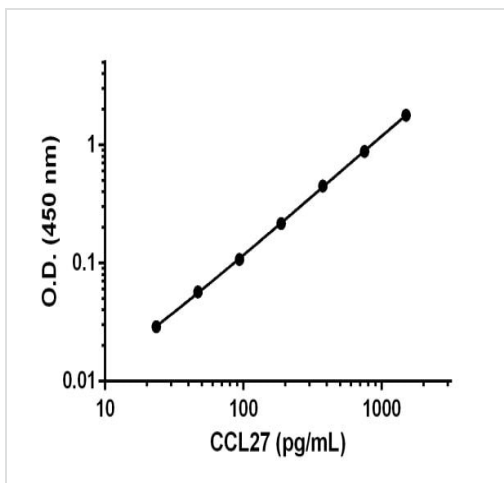
Store at +4°C. Please refer to protocols.

Components	1 x 96 tests
10X Mouse CCL27 (CTACK) Capture Antibody	1 x 600µl
10X Mouse CCL27 (CTACK) Detector Antibody	1 x 600µl
10X Wash Buffer PT (ab206977)	1 x 20ml
Antibody Diluent 4BC	1 x 6ml
Mouse CCL27 (CTACK) Lyophilized Recombinant Protein	2 vials
Plate Seals	1 unit
Sample Diluent NS (ab193972)	1 x 50ml
SimpleStep Pre-Coated 96-Well Microplate (ab206978)	1 unit

Components	1 x 96 tests
Stop Solution	1 x 12ml
TMB Development Solution	1 x 12ml

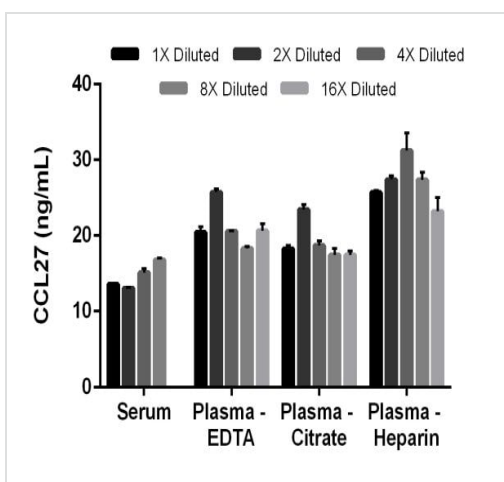
<b>Function</b>	Chemotactic factor that attracts skin-associated memory T-lymphocytes. May play a role in mediating homing of lymphocytes to cutaneous sites. Binds to CCR10.
<b>Tissue specificity</b>	Testis, thymus, placenta, ovary and skin.
<b>Sequence similarities</b>	Belongs to the intercrine beta (chemokine CC) family.
<b>Cellular localization</b>	Secreted.

## Images



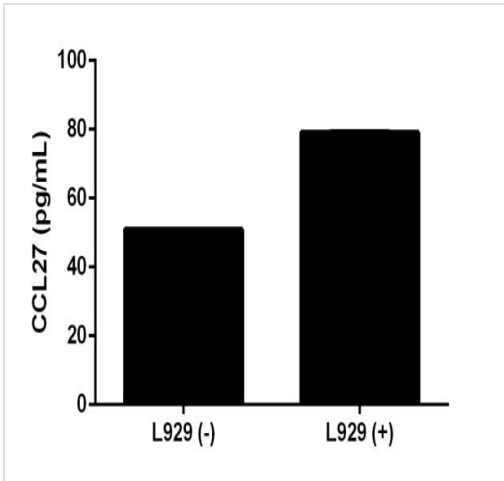
Example of CCL27 standard curve.

Background-subtracted data values (mean +/- SD) are graphed.



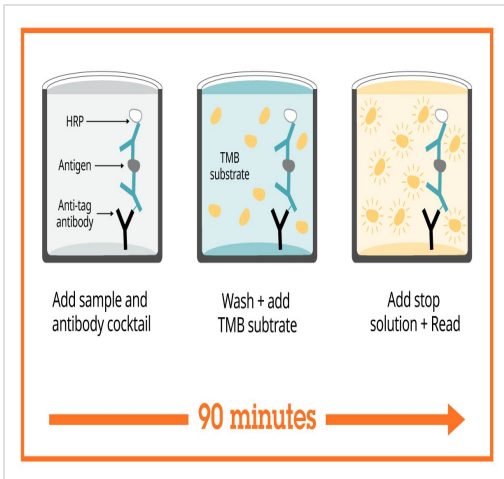
Titration of mouse serum, citrate plasma, heparin plasma, and EDTA plasma within the working range of the assay.

The 1X dilution was 3.13% for mouse serum, 6.25% for citrate and EDTA plasma, and 1.56% for heparin plasma. Interpolated data values (mean +/- SD, n = 2) are graphed.



CCL27 levels in stimulated (1.5% PHA + 10 ng/mL PMA, 72 hrs (+)) and unstimulated (-) mouse L929 supernatants.

A blank cell culture media control was also analyzed, and was negative. The 1X dilution was 100% for both the stimulated and unstimulated supernatants. Interpolated data values (mean +/- SD, n = 2) are graphed.



Sandwich ELISA - Mouse CCL27 ELISA Kit (CTACK) (ab202406)

SimpleStep ELISA technology allows the formation of the antibody-antigen complex in one single step, reducing assay time to 90 minutes. Add samples or standards and antibody mix to wells all at once, incubate, wash, and add your final substrate. See protocol for a detailed step-by-step guide.

Powered by  
recombinant antibodies



**Research with confidence**  
Consistent and reproducible results



**Long-term and scalable supply**  
Recombinant technology



**Success from the first experiment**  
Confirmed specificity



**Ethical standards compliant**  
Animal-free production

Sandwich ELISA - Mouse CCL27 ELISA Kit  
(CTACK) (ab202406)

To learn more about the advantages of recombinant antibodies see [here](#).

**Get more done with SimpleStep ELISA**



**Easy to use**  
Single-wash 90-minute protocol



**Flexible**  
Matched antibody pairs available



**Precision antibodies**  
High sensitivity, specificity and reproducibility



**Scalable**  
Now in 10-pack and 384-well formats

Sandwich ELISA - Mouse CCL27 ELISA Kit  
(CTACK) (ab202406)

To learn more about the advantages of SimpleStep ELISA<sup>®</sup> kits see [here](#).

**Please note:** All products are "FOR RESEARCH USE ONLY. NOT FOR USE IN DIAGNOSTIC PROCEDURES"

### Our Abpromise to you: Quality guaranteed and expert technical support

- Replacement or refund for products not performing as stated on the datasheet
- Valid for 12 months from date of delivery
- Response to your inquiry within 24 hours
- We provide support in Chinese, English, French, German, Japanese and Spanish
- Extensive multi-media technical resources to help you
- We investigate all quality concerns to ensure our products perform to the highest standards

If the product does not perform as described on this datasheet, we will offer a refund or replacement. For full details of the Abpromise, please visit <https://www.abcam.com/abpromise> or contact our technical team.

## Terms and conditions

---

- Guarantee only valid for products bought direct from Abcam or one of our authorized distributors