

Mouse CD30 ELISA Kit ab264614

Recombinant SimpleStep ELISA

5 Images

Overview

Product name	Mouse CD30 ELISA Kit				
Detection method	Colorimetric				
Precision	Intra-assay				
	Sample	n	Mean	SD	CV%
	Supernatant	8			3.5%
	Inter-assay				
	Sample	n	Mean	SD	CV%
	Supernatant	4			4.4%
Sample type	Cell culture supernatant, Serum, Hep Plasma, EDTA Plasma, Cit plasma				
Assay type	Sandwich (quantitative)				
Sensitivity	79 pg/ml				
Range	133 pg/ml - 8500 pg/ml				
Recovery	Sample specific recovery				
	Sample type		Average %		Range
	Cell culture supernatant		106		86% - 119%
	Serum		107		98% - 114%
	Hep Plasma		96		93% - 108%
	EDTA Plasma		99		90% - 106%
	Cit plasma		95		87% - 102%
Assay time	1h 30m				
Assay duration	One step assay				

**Species reactivity****Reacts with:** Mouse**Product overview**

Mouse CD30 ELISA Kit (ab264614) is a single-wash 90 min sandwich ELISA designed for the quantitative measurement of CD30 protein in cell culture supernatant, cit plasma, edta plasma, hep plasma, and serum. It uses our proprietary SimpleStep ELISA® technology. Quantitate Mouse CD30 with 79 pg/ml sensitivity.

SimpleStep ELISA® technology employs capture antibodies conjugated to an affinity tag that is recognized by the monoclonal antibody used to coat our SimpleStep ELISA® plates. This approach to sandwich ELISA allows the formation of the antibody-analyte sandwich complex in a single step, significantly reducing assay time. See the SimpleStep ELISA® protocol summary in the image section for further details. Our SimpleStep ELISA® technology provides several benefits:

- Single-wash protocol reduces assay time to 90 minutes or less
- High sensitivity, specificity and reproducibility from superior antibodies
- Fully validated in biological samples
- 96-wells plate breakable into 12 x 8 wells strips

A 384-well SimpleStep ELISA® microplate ([ab203359](#)) is available to use as an alternative to the 96-well microplate provided with SimpleStep ELISA® kits.

**Notes**

CD30, also known as Tumor necrosis factor receptor superfamily member 8, is a cell membrane receptor encoded by the gene *Tnfrsf8*. May play a role in the regulation of cellular growth and transformation of activated lymphoblasts.

**Platform**

Pre-coated microplate (12 x 8 well strips)

**Properties****Storage instructions**

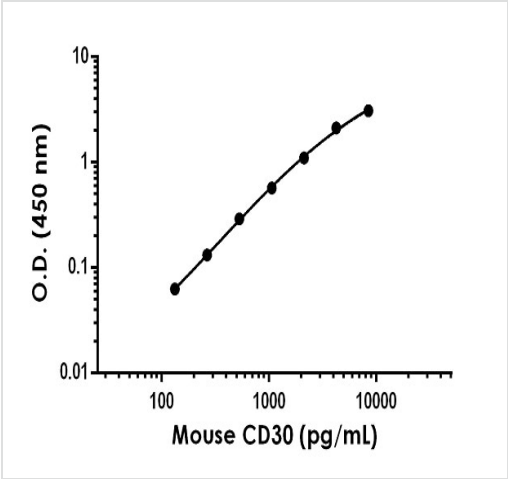
Store at +4°C. Please refer to protocols.

Components	1 x 96 tests
10X Mouse CD30 Capture Antibody	1 x 600µl
10x Mouse CD30 Detector Antibody	1 x 600µl
10X Wash Buffer PT (ab206977)	1 x 20ml
Antibody Diluent 4BR	1 x 6ml
Mouse CD30 Lyophilized Recombinant Protein	2 vials
Plate Seals	1 unit
Sample Diluent NS (ab193972)	1 x 12ml
SimpleStep Pre-Coated 96-Well Microplate (ab206978)	1 unit
Stop Solution	1 x 12ml

Components	1 x 96 tests
TMB Development Solution	1 x 12ml

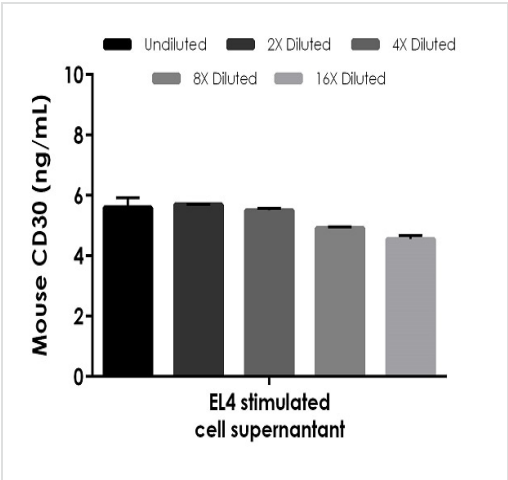
Function	Receptor for TNFSF8/CD30L. May play a role in the regulation of cellular growth and transformation of activated lymphoblasts. Regulates gene expression through activation of NF-kappa-B.
Sequence similarities	Contains 6 TNFR-Cys repeats.
Post-translational modifications	Phosphorylated on serine and tyrosine residues.
Cellular localization	Cytoplasm and Cell membrane.

Images



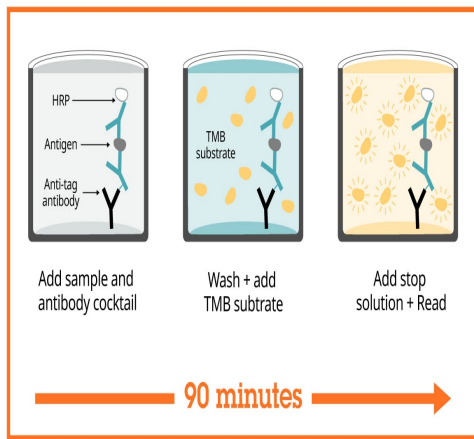
Example of mouse CD30 standard curve in Sample Diluent NS.

The CD30 standard curve was prepared as described in Section 10. Raw data values are shown in the table. Background-subtracted data values (mean +/- SD) are graphed.



Interpolated concentrations of native CD30 in mouse cell culture supernatant samples.

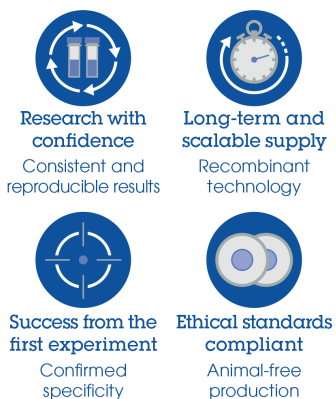
The concentrations of CD30 were measured in duplicates, interpolated from the CD30 standard curves and corrected for sample dilution. Undiluted samples are as follows: Stimulated EL4 supernatant 100%. The interpolated dilution factor corrected values are plotted (mean +/- SD, n=2). The mean CD30 concentration was determined to be 5.3 ng/mL in stimulated EL4 supernatant.



Sandwich ELISA - Mouse CD30 ELISA Kit  
(ab264614)

SimpleStep ELISA technology allows the formation of the antibody-antigen complex in one single step, reducing assay time to 90 minutes. Add samples or standards and antibody mix to wells all at once, incubate, wash, and add your final substrate. See protocol for a detailed step-by-step guide.

Powered by  
recombinant antibodies



Sandwich ELISA - Mouse CD30 ELISA Kit  
(ab264614)

To learn more about the advantages of recombinant antibodies see [here](#).

Get more done with  
SimpleStep ELISA



Sandwich ELISA - Mouse CD30 ELISA Kit  
(ab264614)

To learn more about the advantages of SimpleStep ELISA<sup>®</sup> kits see [here](#).

**Please note:** All products are "FOR RESEARCH USE ONLY. NOT FOR USE IN DIAGNOSTIC PROCEDURES"

### **Our Abpromise to you: Quality guaranteed and expert technical support**

---

- Replacement or refund for products not performing as stated on the datasheet
- Valid for 12 months from date of delivery
- Response to your inquiry within 24 hours
  
- We provide support in Chinese, English, French, German, Japanese and Spanish
- Extensive multi-media technical resources to help you
- We investigate all quality concerns to ensure our products perform to the highest standards

If the product does not perform as described on this datasheet, we will offer a refund or replacement. For full details of the Abpromise, please visit <https://www.abcam.com/abpromise> or contact our technical team.

### **Terms and conditions**

---

- Guarantee only valid for products bought direct from Abcam or one of our authorized distributors