

Mouse CD93 ELISA Kit ab233620

Recombinant SimpleStep ELISA[®]

9 Images

Overview

Product name	Mouse CD93 ELISA Kit			
Detection method	Colorimetric			
Precision	Intra-assay			
	Sample	n	Mean	SD
	Serum	5		4.2%
	Inter-assay			
	Sample	n	Mean	SD
	Serum	3		5.7%
Sample type	Cell culture supernatant, Serum, Tissue Extracts, Hep Plasma, EDTA Plasma, Cit plasma, Tissue Homogenate			
Assay type	Sandwich (quantitative)			
Sensitivity	3.4 pg/ml			
Range	23.4 pg/ml - 1500 pg/ml			
Recovery	Sample specific recovery			

Sample type	Average %	Range
Serum	102	98% - 107%
Tissue Extracts	99	97% - 112%
Hep Plasma	108	101% - 113%
EDTA Plasma	101	98% - 106%
Cit plasma	103	99% - 110%
Tissue Homogenate	108	102% - 117%

Assay time	1h 30m
Assay duration	One step assay
Species reactivity	Reacts with: Mouse Does not react with: Cow
Product overview	<p>Mouse CD93 ELISA Kit (ab233620) is a single-wash 90 min sandwich ELISA designed for the quantitative measurement of CD93 protein in edta plasma, hep plasma, serum, tissue extracts, tissue homogenate, cell culture supernatant, and cit plasma. It uses our proprietary SimpleStep ELISA® technology. Quantitate Mouse CD93 with 3.4 pg/ml sensitivity.</p> <p>SimpleStep ELISA® technology employs capture antibodies conjugated to an affinity tag that is recognized by the monoclonal antibody used to coat our SimpleStep ELISA® plates. This approach to sandwich ELISA allows the formation of the antibody-analyte sandwich complex in a single step, significantly reducing assay time. See the SimpleStep ELISA® protocol summary in the image section for further details. Our SimpleStep ELISA® technology provides several benefits:</p> <ul style="list-style-type: none"> - Single-wash protocol reduces assay time to 90 minutes or less - High sensitivity, specificity and reproducibility from superior antibodies - Fully validated in biological samples - 96-wells plate breakable into 12 x 8 wells strips <p>A 384-well SimpleStep ELISA® microplate (ab203359) is available to use as an alternative to the 96-well microplate provided with SimpleStep ELISA® kits.</p>
Notes	<p>Abcam has not and does not intend to apply for the REACH Authorisation of customers' uses of products that contain European Authorisation list (Annex XIV) substances.</p> <p>It is the responsibility of our customers to check the necessity of application of REACH Authorisation, and any other relevant authorisations, for their intended uses.</p>
Platform	Microplate (12 x 8 well strips)

Properties

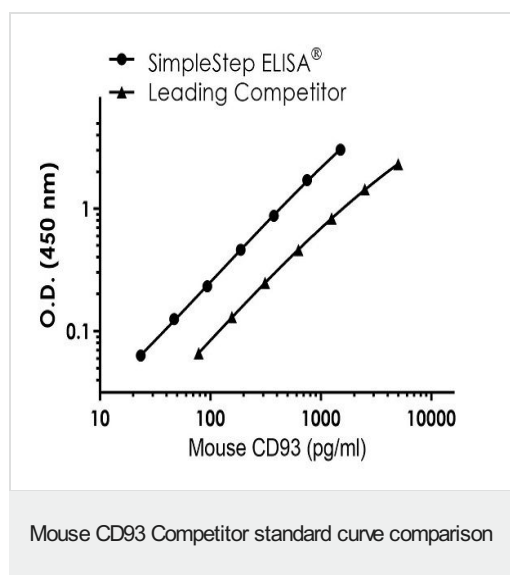
Storage instructions Store at +4°C. Please refer to protocols.

Components	1 x 96 tests
10X Mouse CD93 Capture Antibody	1 x 600µl
10X Mouse CD93 Detector Antibody	1 x 600µl
10X Wash Buffer PT (ab206977)	1 x 20ml
50X Cell Extraction Enhancer Solution (ab193971)	1 x 1ml
5X Cell Extraction Buffer PTR (ab193970)	1 x 10ml
Antibody Diluent 4BR	1 x 6ml

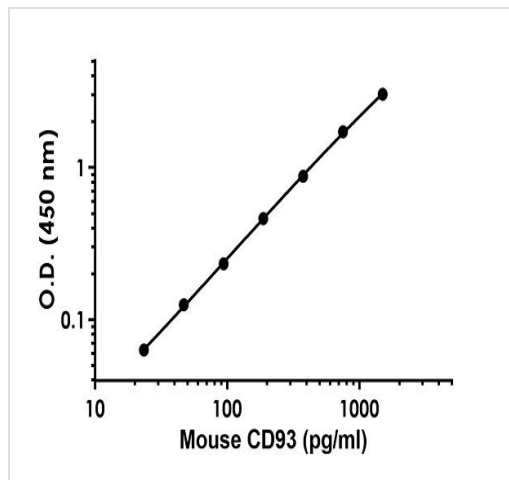
Components	1 x 96 tests
Mouse CD93 Lyophilized Recombinant Protein	2 vials
Plate Seals	1 unit
Sample Diluent NS (ab193972)	1 x 50ml
SimpleStep Pre-Coated 96-Well Microplate (ab206978)	1 unit
Stop Solution	1 x 12ml
TMB Development Solution	1 x 12ml

Function	Receptor (or element of a larger receptor complex) for C1q, mannose-binding lectin (MBL2) and pulmonary surfactant protein A (SPA). May mediate the enhancement of phagocytosis in monocytes and macrophages upon interaction with soluble defense collagens. May play a role in intercellular adhesion.
Tissue specificity	Highly expressed in endothelial cells, platelets, cells of myeloid origin, such as monocytes and neutrophils. Not expressed in cells of lymphoid origin.
Sequence similarities	Contains 1 C-type lectin domain. Contains 5 EGF-like domains.
Post-translational modifications	N- and O-glycosylated.
Cellular localization	Membrane.

Images

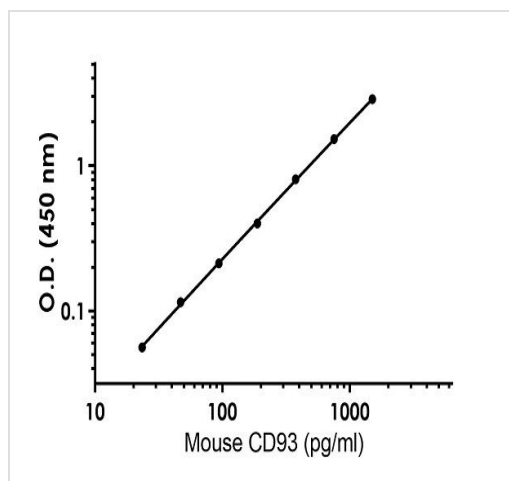


Standard curve comparison between Mouse CD93 SimpleStep ELISA® kit and traditional ELISA kit from leading competitor. SimpleStep ELISA kit shows increased sensitivity.



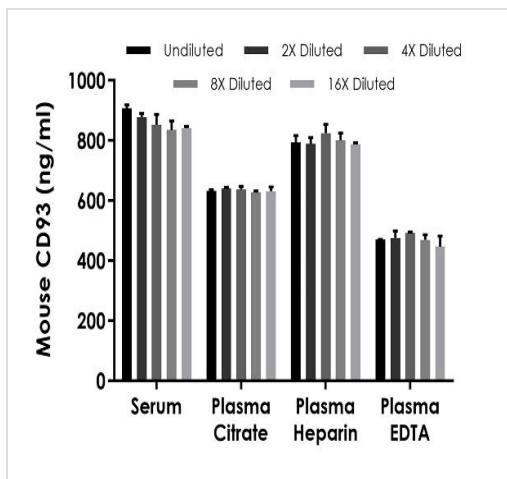
Background-subtracted data values (mean \pm SD) are graphed.

Example of mouse CD93 standard curve in Sample Diluent NS



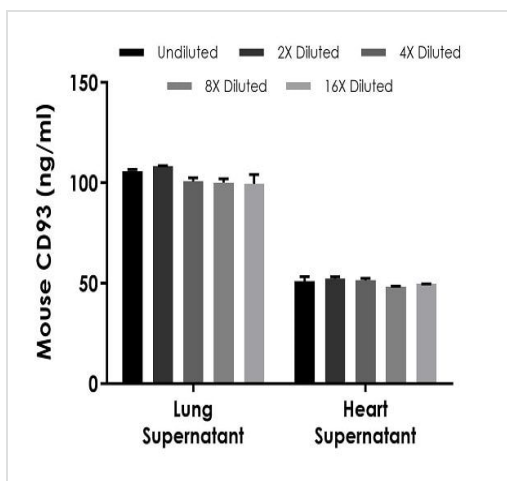
Background-subtracted data values (mean \pm SD) are graphed.

Example of mouse CD93 standard curve in 1X Cell Extraction Buffer PTR



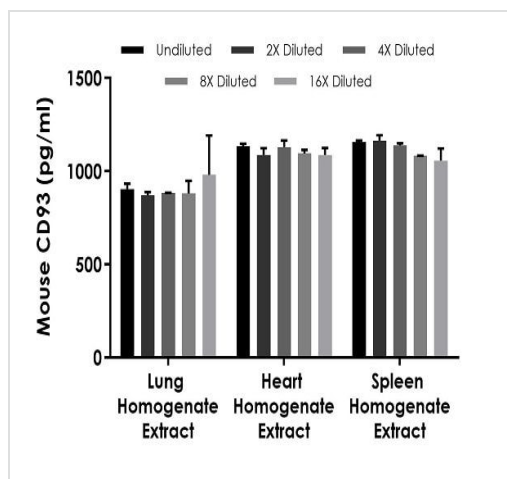
Interpolated concentrations of native CD93 in mouse serum and plasma samples

The concentrations of CD93 were measured in duplicates, interpolated from the CD93 standard curves and corrected for sample dilution. Undiluted samples are as follows: serum 1: 1,000, plasma (citrate) 1: 500, plasma (heparin) 1: 1,000, and plasma (EDTA) 1: 500. The interpolated dilution factor corrected values are plotted (mean \pm SD, n=2). The mean CD93 concentration was determined to be 863 ng/mL in serum, 633 ng/mL in plasma (citrate), 799 ng/ml in plasma (heparin), and 468 ng/ml in plasma (EDTA).



Interpolated concentrations of native CD93 in mouse tissue culture supernatant samples

The concentrations of CD93 were measured in duplicates, interpolated from the CD93 standard curves and corrected for sample dilution. Undiluted samples are as follows: mouse lung supernatant 1: 200 and mouse heart supernatant 2%. The interpolated dilution factor corrected values are plotted (mean \pm SD, n=2). The mean CD93 concentration was determined to be 103 ng/mL in mouse lung supernatant and 50 ng/ml in mouse heart supernatant.



Interpolated concentrations of native CD93 in mouse lung, heart, and spleen homogenate extract samples based on a 3 µg/mL, 25 µg/mL, and 50 µg/mL extract load respectively

The concentrations of CD93 were measured in duplicate and interpolated from the CD93 standard curve and corrected for sample dilution. The interpolated dilution factor corrected values are plotted (mean +/- SD, n=2). The mean CD93 concentration was determined to be 898 pg/mL in lung homogenate extract, 1116 pg/ml in heart homogenate extract, and 1133 ng/mL in spleen homogenate extract samples.

Powered by
recombinant antibodies

Research with confidence
Consistent and reproducible results

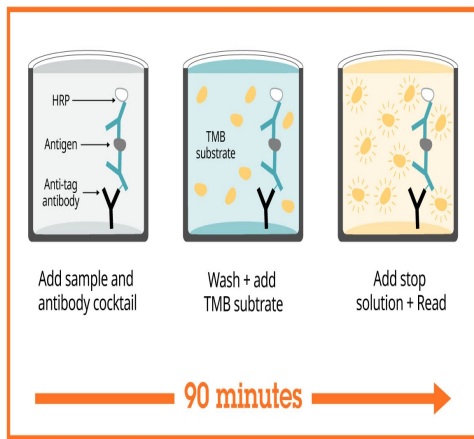
Long-term and scalable supply
Recombinant technology

Success from the first experiment
Confirmed specificity

Ethical standards compliant
Animal-free production

Sandwich ELISA - Mouse CD93 ELISA Kit
(ab233620)

To learn more about the advantages of recombinant antibodies see [here](#).



Sandwich ELISA - Mouse CD93 ELISA Kit
(ab233620)

SimpleStep ELISA technology allows the formation of the antibody-antigen complex in one single step, reducing assay time to 90 minutes. Add samples or standards and antibody mix to wells all at once, incubate, wash, and add your final substrate. See protocol for a detailed step-by-step guide.

Get more done with SimpleStep ELISA



Easy to use
Single-wash 90-minute protocol



Flexible
Matched antibody pairs available



Precision antibodies
High sensitivity, specificity and reproducibility



Scalable
Now in 10-pack and 384-well formats

Sandwich ELISA - Mouse CD93 ELISA Kit
(ab233620)

To learn more about the advantages of SimpleStep ELISA® kits see [here](#).

Please note: All products are "FOR RESEARCH USE ONLY. NOT FOR USE IN DIAGNOSTIC PROCEDURES"

Our Abpromise to you: Quality guaranteed and expert technical support

- Replacement or refund for products not performing as stated on the datasheet
- Valid for 12 months from date of delivery
- Response to your inquiry within 24 hours
- We provide support in Chinese, English, French, German, Japanese and Spanish
- Extensive multi-media technical resources to help you
- We investigate all quality concerns to ensure our products perform to the highest standards

If the product does not perform as described on this datasheet, we will offer a refund or replacement. For full details of the Abpromise, please visit <https://www.abcam.com/abpromise> or contact our technical team.

Terms and conditions

- Guarantee only valid for products bought direct from Abcam or one of our authorized distributors