

Mouse CXCL15 ELISA Kit ab234567

Recombinant SimpleStep ELISA

1 References 7 Images

Overview

Product name	Mouse CXCL15 ELISA Kit				
Detection method	Colorimetric				
Precision	Intra-assay				
	Sample	n	Mean	SD	CV%
	Lung	8			2.5%
	Inter-assay				
	Sample	n	Mean	SD	CV%
	Lung	3			3.9%
Sample type	Other biological fluids, Tissue Extracts, Hep Plasma				
Assay type	Sandwich (quantitative)				
Sensitivity	1.7 pg/ml				
Range	25 pg/ml - 4800 pg/ml				
Recovery	Sample specific recovery				
	Sample type		Average %		Range
	Other biological fluids		118		114% - 120%
	Tissue Extracts		108		108% - 109%
	Hep Plasma		91		91% - 93%
Assay time	1h 30m				
Assay duration	One step assay				
Species reactivity	Reacts with: Mouse				
Product overview	Mouse CXCL15 ELISA Kit (ab234567) is a single-wash 90 min sandwich ELISA designed for the quantitative measurement of CXCL15 protein in other biological fluids, tissue extracts, and hep				

plasma. It uses our proprietary SimpleStep ELISA® technology. Quantitate Mouse CXCL15 with 1.7 pg/ml sensitivity.

SimpleStep ELISA® technology employs capture antibodies conjugated to an affinity tag that is recognized by the monoclonal antibody used to coat our SimpleStep ELISA® plates. This approach to sandwich ELISA allows the formation of the antibody-analyte sandwich complex in a single step, significantly reducing assay time. See the SimpleStep ELISA® protocol summary in the image section for further details. Our SimpleStep ELISA® technology provides several benefits:

- Single-wash protocol reduces assay time to 90 minutes or less
- High sensitivity, specificity and reproducibility from superior antibodies
- Fully validated in biological samples
- 96-wells plate breakable into 12 x 8 wells strips

A 384-well SimpleStep ELISA® microplate ([ab203359](#)) is available to use as an alternative to the 96-well microplate provided with SimpleStep ELISA® kits.

**Notes**

Abcam has not and does not intend to apply for the REACH Authorisation of customers' uses of products that contain European Authorisation list (Annex XIV) substances. It is the responsibility of our customers to check the necessity of application of REACH Authorisation, and any other relevant authorisations, for their intended uses.

**Platform** Pre-coated microplate (12 x 8 well strips)

## Properties

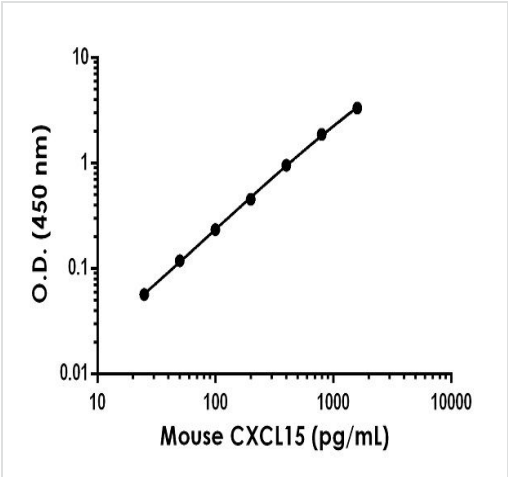
**Storage instructions** Store at +4°C. Please refer to protocols.

Components	1 x 96 tests
10X Mouse CXCL15 Capture Antibody	1 x 600µl
10X Mouse CXCL15 Detector Antibody	1 x 600µl
10X Wash Buffer PT (ab206977)	1 x 20ml
50X Cell Extraction Enhancer Solution (ab193971)	1 x 1ml
5X Cell Extraction Buffer PTR (ab193970)	1 x 10ml
Antibody Diluent 4BR	1 x 6ml
Mouse CXCL15 Lyophilized Recombinant Protein	2 vials
Plate Seals	1 unit
Sample Diluent NS (ab193972)	1 x 50ml
SimpleStep Pre-Coated 96-Well Microplate (ab206978)	1 unit

Components	1 x 96 tests
Stop Solution	1 x 12ml
TMB Development Solution	1 x 12ml

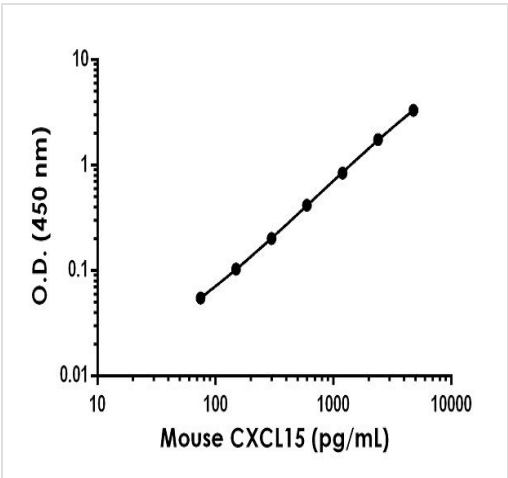
Function	Chemotactic for neutrophils. Involved in lung-specific neutrophil trafficking during normal and inflammatory conditions.
Tissue specificity	Expression restricted to the lung, produced by bronchoepithelial cells and is released into the airways. Expressed at low levels in fetal lung.
Sequence similarities	Belongs to the intercrine alpha (chemokine CxC) family.
Cellular localization	Secreted.

Images



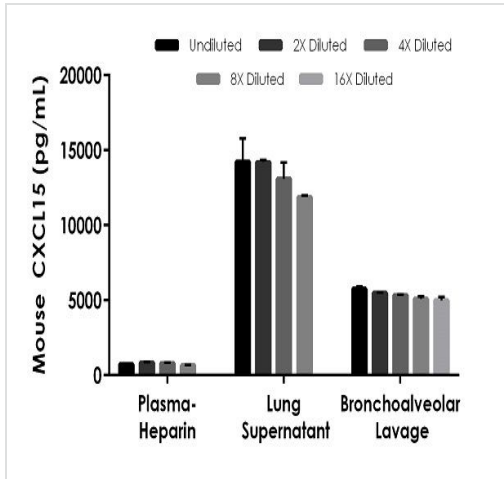
Example of mouse CXCL15 standard curve in Sample Diluent NS

Background-subtracted data values (mean +/- SD) are graphed.



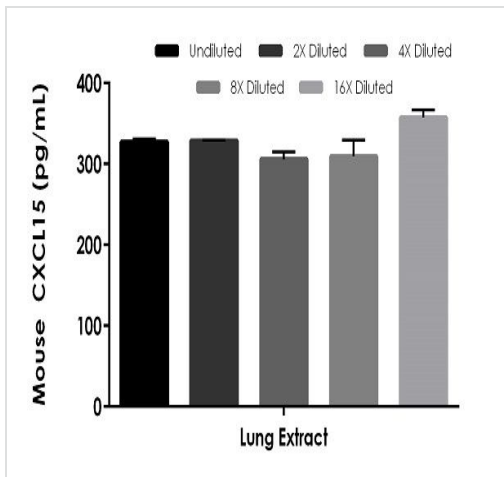
Example of mouse CXCL15 standard curve in 1X Cell Extraction Buffer PTR

Background-subtracted data values (mean +/- SD) are graphed.



Interpolated concentrations of native CXCL15 in mouse plasma -heparin, lung supernatant and bronchoalveolar lavage samples

The concentrations of CXCL15 were measured in duplicates, interpolated from the CXCL15 standard curves and corrected for sample dilution. Undiluted samples are as follows: plasma - heparin 50%, lung supernatant 10% and bronchoalveolar lavage 5%. The interpolated dilution factor corrected values are plotted (mean +/- SD, n=2). The mean CXCL15 concentration was determined to be 757.6 pg/mL in neat plasma – heparin, 13354.54 pg/mL in neat lung supernatant, and 5334.90 pg/mL in neat bronchoalveolar lavage.



Interpolated concentrations of native CXCL15 in mouse lung extract based on a 500 µg/mL extract load

The concentrations of CXCL15 were measured in duplicate and interpolated from the CXCL15 standard curve and corrected for sample dilution. The interpolated dilution factor corrected values are plotted (mean +/- SD, n=2). The mean CXCL15 concentration was determined to be 325.81 pg/mL.

Powered by  
recombinant antibodies



**Research with confidence**  
Consistent and reproducible results



**Long-term and scalable supply**  
Recombinant technology



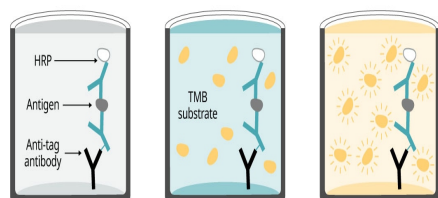
**Success from the first experiment**  
Confirmed specificity



**Ethical standards compliant**  
Animal-free production

Sandwich ELISA - Mouse CXCL15 ELISA Kit  
(ab234567)

To learn more about the advantages of recombinant antibodies see [here](#).



Add sample and  
antibody cocktail

Wash + add  
TMB substrate

Add stop  
solution + Read

**90 minutes**

SimpleStep ELISA technology allows the formation of the antibody-antigen complex in one single step, reducing assay time to 90 minutes. Add samples or standards and antibody mix to wells all at once, incubate, wash, and add your final substrate. See protocol for a detailed step-by-step guide.

Sandwich ELISA - Mouse CXCL15 ELISA Kit  
(ab234567)

**Get more done with  
SimpleStep ELISA**



**Easy to use**  
Single-wash 90-minute protocol



**Flexible**  
Matched antibody pairs available



**Precision antibodies**  
High sensitivity, specificity and reproducibility



**Scalable**  
Now in 10-pack and 384-well formats

Sandwich ELISA - Mouse CXCL15 ELISA Kit  
(ab234567)

To learn more about the advantages of SimpleStep ELISA<sup>®</sup> kits see [here](#).

**Please note:** All products are "FOR RESEARCH USE ONLY. NOT FOR USE IN DIAGNOSTIC PROCEDURES"

### **Our Abpromise to you: Quality guaranteed and expert technical support**

---

- Replacement or refund for products not performing as stated on the datasheet
- Valid for 12 months from date of delivery
- Response to your inquiry within 24 hours
  
- We provide support in Chinese, English, French, German, Japanese and Spanish
- Extensive multi-media technical resources to help you
- We investigate all quality concerns to ensure our products perform to the highest standards

If the product does not perform as described on this datasheet, we will offer a refund or replacement. For full details of the Abpromise, please visit <https://www.abcam.com/abpromise> or contact our technical team.

### **Terms and conditions**

---

- Guarantee only valid for products bought direct from Abcam or one of our authorized distributors