

Mouse CXCL16 ELISA Kit ab197744

Recombinant SimpleStep ELISA

1 References 8 Images

Overview

Product name Mouse CXCL16 ELISA Kit

Detection method Colorimetric

Precision	Intra-assay				
	Sample	n	Mean	SD	CV%
	RAW 264.7	5			6.3%
	Inter-assay				
	Sample	n	Mean	SD	CV%
	RAW 264.7	3			3.2%

Sample type Cell culture supernatant, Serum, Cit plasma

Assay type Sandwich (quantitative)

Sensitivity 7.6 pg/ml

Range 31.25 pg/ml - 2000 pg/ml

Recovery	Sample specific recovery		
	Sample type	Average %	Range
	Serum	99.9	84.8% - 112.5%
	Cell culture media	96.7	86% - 108.3%
	Cit plasma	90.5	84.2% - 95.8%

Assay time 1h 30m

Assay duration One step assay

Species reactivity Reacts with: Mouse
Does not react with: Goat, Cow, Pig

Product overview Mouse CXCL16 ELISA Kit (ab197744) is a single-wash 90 min sandwich ELISA designed for the

quantitative measurement of CXCL16 protein in cell culture supernatant, cit plasma, and serum. It uses our proprietary SimpleStep ELISA® technology. Quantitate Mouse CXCL16 with 7.6 pg/ml sensitivity.

SimpleStep ELISA® technology employs capture antibodies conjugated to an affinity tag that is recognized by the monoclonal antibody used to coat our SimpleStep ELISA® plates. This approach to sandwich ELISA allows the formation of the antibody-analyte sandwich complex in a single step, significantly reducing assay time. See the SimpleStep ELISA® protocol summary in the image section for further details. Our SimpleStep ELISA® technology provides several benefits:

- Single-wash protocol reduces assay time to 90 minutes or less
- High sensitivity, specificity and reproducibility from superior antibodies
- Fully validated in biological samples
- 96-wells plate breakable into 12 x 8 wells strips

A 384-well SimpleStep ELISA® microplate ([ab203359](#)) is available to use as an alternative to the 96-well microplate provided with SimpleStep ELISA® kits.

Notes

CXCL16 is a chemokine. It induces a strong chemotactic response. It induces calcium mobilization. CXCL16 binds to CXCR6/Bonzo. CXCL16 also acts as a scavenger receptor on macrophages, which specifically binds to oxidized low density lipoprotein, suggesting that it may be involved in pathophysiology such as atherogenesis. CXCL16 is a plasma membrane protein.

Platform

Microplate (12 x 8 well strips)

Properties

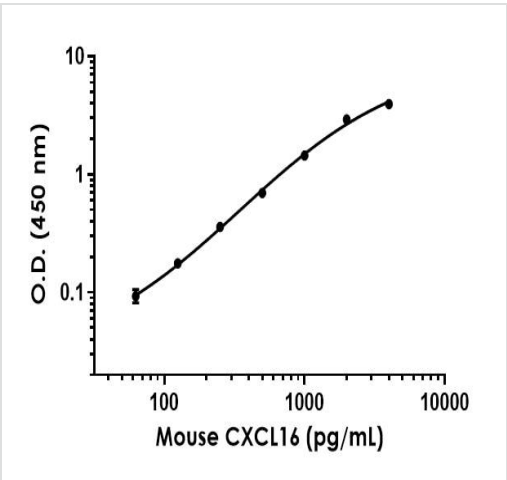
Storage instructions Store at +4°C. Please refer to protocols.

Components	1 x 96 tests
10X Mouse CXCL16 Capture Antibody	1 x 600µl
10X Mouse CXCL16 Detector Antibody	1 x 600µl
10X Wash Buffer PT (ab206977)	1 x 20ml
Antibody Diluent 4BI	1 x 6ml
Mouse CXCL16 Lyophilized Recombinant Protein	2 vials
Plate Seals	1 unit
Sample Diluent 25BS	1 x 20ml
Sample Diluent NS (ab193972)	1 x 50ml
SimpleStep Pre-Coated 96-Well Microplate (ab206978)	1 unit
Stop Solution	1 x 12ml

Components	1 x 96 tests
TMB Development Solution	1 x 12ml

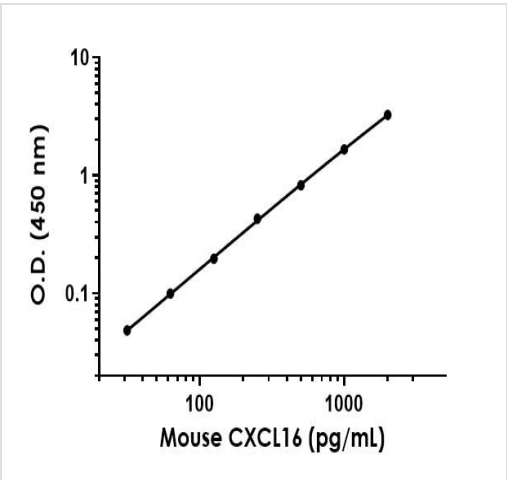
Relevance	CXCL16 acts as a scavenger receptor on macrophages, which specifically binds to OxLDL (oxidized low density lipoprotein), suggesting that it may be involved in pathophysiology such as atherogenesis. It induces a strong chemotactic response and calcium mobilization. It binds to CXCR6/Bonzo.
Cellular localization	Cell Membrane and Secreted

Images



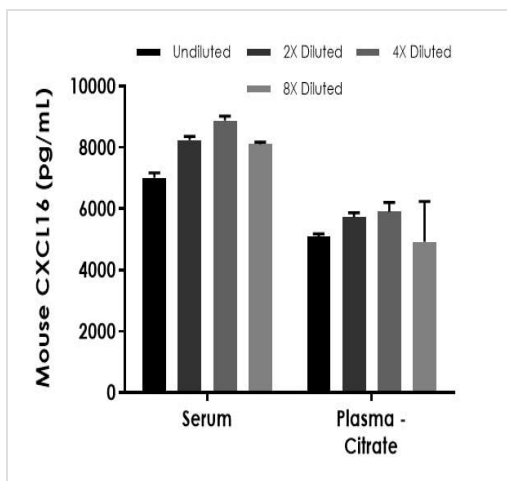
Example of CXCL16 standard curve prepared in Sample Diluent 25BS.

Background-subtracted data values (mean +/- SD) are graphed.



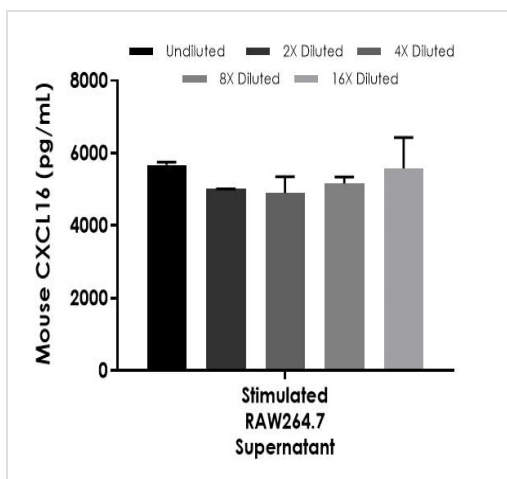
Example of CXCL16 standard curve prepared in Sample Diluent NS.

Background-subtracted data values (mean +/- SD) are graphed.



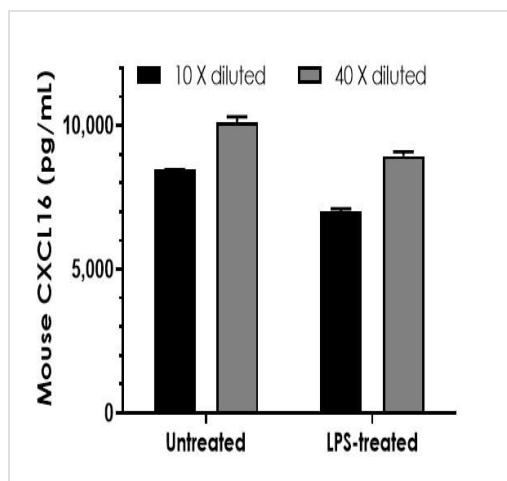
Interpolated concentrations of native CXCL16 in mouse serum and plasma (citrate) samples.

The concentrations of CXCL16 were measured in duplicates, interpolated from the CXCL16 standard curves and corrected for sample dilution. Undiluted samples are as follows: serum 10% and plasma (citrate) 10%. The interpolated dilution factor corrected values are plotted (mean \pm SD, $n=2$).



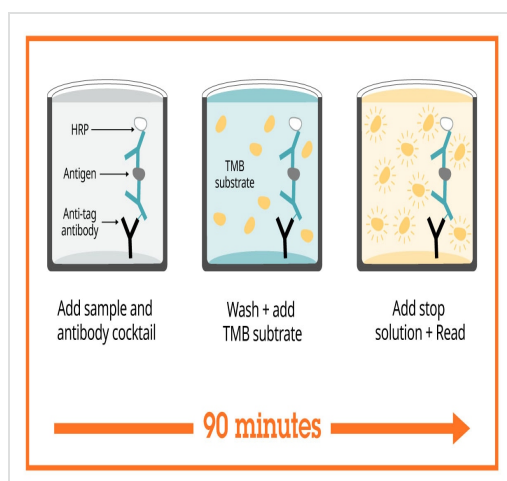
Interpolated concentrations of native CXCL16 in mouse LPS-treated RAW264.7 supernatant samples.

RAW 264.7 cells were 24 hour serum starved and continued to culture in the presence of 5 μ g/mL lipopolysaccharides (LPS) for 48 hours. The concentrations of CXCL16 were measured in duplicates, interpolated from the CXCL16 standard curves and corrected for sample dilution. Undiluted samples are as follows: RAW264.7 supernatant 20%. The interpolated dilution factor corrected values are plotted (mean \pm SD, $n=2$).



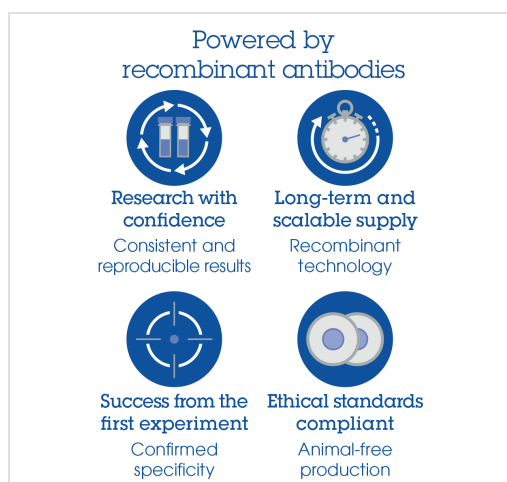
CXCL16 concentrations in unstimulated and LPS-stimulated RAW 264.7 cell culture supernatants.

RAW 264.7 cells were 24 hour serum starved and continued to culture either in the absence or in the presence of 5 µg/mL lipopolysaccharides (LPS) for 48 hours. Two dilutions (as indicated) of the cell culture supernatant samples were analyzed with this kit. Interpolated concentrations of CXCL16 adjusted for sample dilution are graphed in pg of CXCL16 per mL of supernatant (mean +/- SD, n = 2).



SimpleStep ELISA technology allows the formation of the antibody-antigen complex in one single step, reducing assay time to 90 minutes. Add samples or standards and antibody mix to wells all at once, incubate, wash, and add your final substrate. See protocol for a detailed step-by-step guide.

Sandwich ELISA - Mouse CXCL16 ELISA Kit (ab197744)



Sandwich ELISA - Mouse CXCL16 ELISA Kit (ab197744)

To learn more about the advantages of recombinant antibodies see [here](#).

**Get more done with
SimpleStep ELISA**



Easy to use

Single-wash 90-minute
protocol



Flexible

Matched antibody pairs
available



Precision antibodies

High sensitivity, specificity
and reproducibility



Scalable

Now in 10-pack and
384-well formats

Sandwich ELISA - Mouse CXCL16 ELISA Kit
(ab197744)

To learn more about the advantages of SimpleStep ELISA® kits
see [here](#).

Please note: All products are "FOR RESEARCH USE ONLY. NOT FOR USE IN DIAGNOSTIC PROCEDURES"

Our Abpromise to you: Quality guaranteed and expert technical support

- Replacement or refund for products not performing as stated on the datasheet
- Valid for 12 months from date of delivery
- Response to your inquiry within 24 hours
- We provide support in Chinese, English, French, German, Japanese and Spanish
- Extensive multi-media technical resources to help you
- We investigate all quality concerns to ensure our products perform to the highest standards

If the product does not perform as described on this datasheet, we will offer a refund or replacement. For full details of the Abpromise, please visit <https://www.abcam.com/abpromise> or contact our technical team.

Terms and conditions

- Guarantee only valid for products bought direct from Abcam or one of our authorized distributors