

Mouse DLL4 ELISA Kit ab213860

2 References 1 Image

Overview

Product name Mouse DLL4 ELISA Kit

Detection method Colorimetric

Precision Intra-assay

Sample	n	Mean	SD	CV%
1	16	40pg/ml	2.44	= 6.1%
2	16	244pg/ml	18.78	= 7.7%
3	16	515pg/ml	36.56	= 7.1%

Inter-assay

Sample	n	Mean	SD	CV%
1	24	40pg/ml	2.64	= 6.6%
2	24	242pg/ml	20.81	= 8.6%
3	24	520pg/ml	38.48	= 7.4%

Sample type Cell culture supernatant, Serum, Cell Lysate, Hep Plasma, EDTA Plasma

Assay type Sandwich (quantitative)

Sensitivity < 10 pg/ml

Range 15.6 pg/ml - 1000 pg/ml

Assay time 3h 30m

Assay duration Multiple steps standard assay

Species reactivity Reacts with: Mouse

Product overview The Mouse DLL4 Enzyme-Linked Immunosorbent Assay (ELISA) kit (ab213860) is designed for the quantitative detection of Mouse DLL4 in cell culture supernatants, cell lysates, serum and plasma (heparin, EDTA).

The ELISA kit is based on standard sandwich enzyme-linked immunosorbent assay technology. A

monoclonal antibody from rat specific for DLL4 has been pre-coated onto 96-well plates. Standards (Expression system for standard: NSO; Immunogen sequence: S28-P525) and test samples are added to the wells, a biotinylated detection polyclonal antibody from goat specific for DLL4 is added subsequently and then followed by washing with PBS or TBS buffer. Avidin-Biotin-Peroxidase Complex was added and unbound conjugates were washed away with PBS or TBS buffer. HRP substrate TMB was used to visualize HRP enzymatic reaction. TMB was catalyzed by HRP to produce a blue color product that changed into yellow after adding acidic stop solution. The density of yellow is proportional to the Mouse DLL4 amount of sample captured in plate.

**Notes** Delta like ligand 4 is a protein that in humans is encoded by the DLL4 gene. It is mapped to 15q15.1. This gene is a homolog of the Drosophila delta gene. DLL4 is a transmembrane ligand for Notch receptors that shows restricted expression to endothelial cells (ECs), in particular to arteries and capillaries, and is involved in vascular development, and it also appeared to be a major trigger of Notch receptor activities previously implicated in arterial and vascular development. Mouse DLL4 could activate mouse Notch1 and mouse Notch4. DLL4 acts as a negative regulator of tumor angiogenesis, its blockade results in the striking uncoupling of tumor growth from vessel density, presenting a novel therapeutic approach even for tumors resistant to anti-VEGF therapies. In addition to it, this gene also plays an important role in promoting Th17 effector activity during mycobacterial challenge.

**Platform** Pre-coated microplate (12 x 8 well strips)

## Properties

**Storage instructions** Store at -20°C. Please refer to protocols.

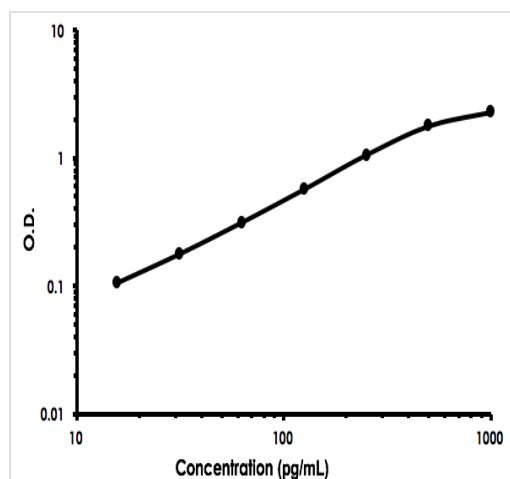
Components	Identifier	1 x 96 tests
ABC Diluent Buffer	Blue Cap	1 x 12ml
Adhesive Plate Seal		4 units
Antibody Diluent Buffer	Green Cap	1 x 12ml
Anti-Mouse DLL4 coated Microplate (12 x 8 wells)		1 unit
Avidin-Biotin-Peroxidase Complex (ABC)		1 x 100µl
Biotinylated anti- Mouse DLL4 antibody		1 x 100µl
Lyophilized recombinant Mouse DLL4 standard		2 vials
Sample Diluent Buffer	Green Cap	1 x 30ml
TMB Color Developing Agent	Black Cap	1 x 10ml
TMB Stop Solution	Yellow Cap	1 x 10ml
Wash Buffer (25X)		1 x 20ml

**Function** Plays a role in the Notch signaling pathway. Activates Notch-1 and Notch-4.

**Tissue specificity** Expressed in vascular endothelium.

<b>Sequence similarities</b>	Contains 1 DSL domain. Contains 8 EGF-like domains.
<b>Domain</b>	The Delta-Serrate-Lag2 (DSL) domain is required for binding to the Notch receptor.
<b>Post-translational modifications</b>	Ubiquitinated by MIB (MIB1 or MIB2), leading to its endocytosis and subsequent degradation.
<b>Cellular localization</b>	Membrane.

## Images



Mouse DLL4 ELISA Kit (ab213860) Standard Curve

Mouse DLL4 ELISA Kit (ab213860) Standard Curve

**Please note:** All products are "FOR RESEARCH USE ONLY. NOT FOR USE IN DIAGNOSTIC PROCEDURES"

## Our Abpromise to you: Quality guaranteed and expert technical support

- Replacement or refund for products not performing as stated on the datasheet
- Valid for 12 months from date of delivery
- Response to your inquiry within 24 hours
- We provide support in Chinese, English, French, German, Japanese and Spanish
- Extensive multi-media technical resources to help you
- We investigate all quality concerns to ensure our products perform to the highest standards

If the product does not perform as described on this datasheet, we will offer a refund or replacement. For full details of the Abpromise, please visit <https://www.abcam.com/abpromise> or contact our technical team.

## Terms and conditions

- Guarantee only valid for products bought direct from Abcam or one of our authorized distributors