

Mouse Galectin-1 ELISA Kit ab253212

Recombinant SimpleStep ELISA

5 Images

Overview

Product name	Mouse Galectin-1 ELISA Kit				
Detection method	Colorimetric				
Precision	Intra-assay				
	Sample	n	Mean	SD	CV%
	Serum	8			2.5%
	Inter-assay				
	Sample	n	Mean	SD	CV%
	Serum	3			6.2%
Sample type	Serum, Hep Plasma, Cit plasma				
Assay type	Sandwich (quantitative)				
Sensitivity	0.17 ng/ml				
Range	0.19 ng/ml - 12 ng/ml				
Recovery	Sample specific recovery				
	Sample type	Average %		Range	
	Serum	108		105% - 113%	
	Hep Plasma	123		114% - 129%	
	Cit plasma	113		104% - 123%	
Assay time	1h 30m				
Assay duration	One step assay				
Species reactivity	Reacts with: Mouse, Cow				
Product overview	Mouse Galectin-1 ELISA Kit (ab253212) is a single-wash 90 min sandwich ELISA designed for the quantitative measurement of Galectin-1 protein in hep plasma, serum, and cit plasma. It uses				

our proprietary SimpleStep ELISA® technology. Quantitate Mouse Galectin-1 with 0.17 ng/ml sensitivity.

SimpleStep ELISA® technology employs capture antibodies conjugated to an affinity tag that is recognized by the monoclonal antibody used to coat our SimpleStep ELISA® plates. This approach to sandwich ELISA allows the formation of the antibody-analyte sandwich complex in a single step, significantly reducing assay time. See the SimpleStep ELISA® protocol summary in the image section for further details. Our SimpleStep ELISA® technology provides several benefits:

- Single-wash protocol reduces assay time to 90 minutes or less
- High sensitivity, specificity and reproducibility from superior antibodies
- Fully validated in biological samples
- 96-wells plate breakable into 12 x 8 wells strips

A 384-well SimpleStep ELISA® microplate ([ab203359](#)) is available to use as an alternative to the 96-well microplate provided with SimpleStep ELISA® kits.

**Notes**

Galectin-1, also known as 14 kDa lectin, galaptin, and lectin galactoside-binding soluble 1, is a  $\beta$ -galactoside binding lectin encoded by the gene LGALS1. Galectin-1 is a 134 amino acid non-glycosylated secreted protein that forms a non-covalently linked homodimer. Galectin-1 is expressed in a wide range of tissues and has various intra- and extra-cellular functions, where generally it is a modulator of immune responses. Galectin-1 may act as an autocrine negative growth factor that regulates cell proliferation.

**Platform** Pre-coated microplate (12 x 8 well strips)

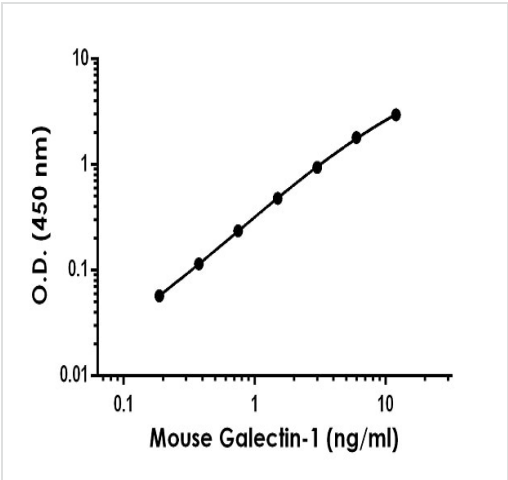
## Properties

**Storage instructions** Store at +4°C. Please refer to protocols.

Components	1 x 96 tests
10X Mouse Galectin-1 Capture Antibody	1 x 600 $\mu$ l
10X Mouse Galectin-1 Detector Antibody	1 x 600 $\mu$ l
10X Wash Buffer PT (ab206977)	1 x 20ml
Antibody Diluent 4BR	1 x 6ml
Mouse Galectin-1 Lyophilized Recombinant Protein	2 vials
Plate Seals	1 unit
Sample Diluent NS (ab193972)	1 x 50ml
SimpleStep Pre-Coated 96-Well Microplate (ab206978)	1 unit
Stop Solution	1 x 12ml
TMB Development Solution	1 x 12ml

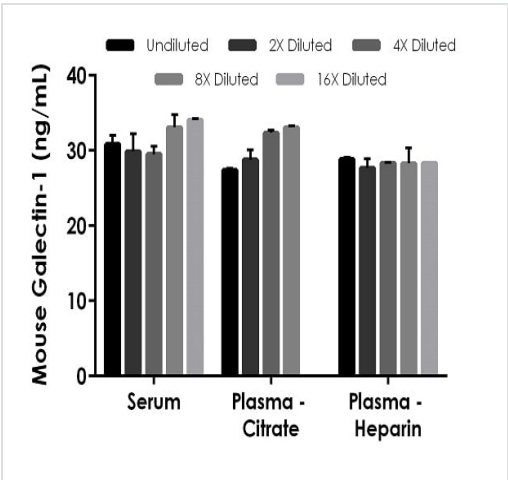
Function	May regulate apoptosis, cell proliferation and cell differentiation. Binds beta-galactoside and a wide array of complex carbohydrates. Inhibits CD45 protein phosphatase activity and therefore the dephosphorylation of Lyn kinase.
Tissue specificity	Expressed in placenta, maternal decidua and fetal membranes. Within placenta, expressed in trophoblasts, stromal cells, villous endothelium, syncytiotrophoblast apical membrane and villous stroma. Within fetal membranes, expressed in amnion, chorioamniotic mesenchyma and chorion (at protein level). Expressed in cardiac, smooth, and skeletal muscle, neurons, thymus, kidney and hematopoietic cells.
Sequence similarities	Contains 1 galectin domain.
Cellular localization	Secreted > extracellular space > extracellular matrix.

Images



Example of mouse Galectin-1 standard curve in Sample Diluent NS.

The Galectin-1 standard curve was prepared as described in Section 10. Raw data values are shown in the table. Background-subtracted data values (mean +/- SD) are graphed.



Interpolated concentrations of native Galectin-1 in mouse serum and plasma samples.

The concentrations of Galectin-1 were measured in duplicates, interpolated from the Galectin-1 standard curves and corrected for sample dilution. Undiluted samples are as follows: serum 25%, plasma (citrate) 25%, and plasma (heparin) 25%. The interpolated dilution factor corrected values are plotted (mean +/- SD, n=2). The mean Galectin-1 concentration was determined to be 31.5 ng/mL in serum, 30.4 ng/mL in plasma (citrate) and 28.3 ng/mL in plasma (heparin).

Powered by  
recombinant antibodies



**Research with confidence**  
Consistent and reproducible results



**Long-term and scalable supply**  
Recombinant technology



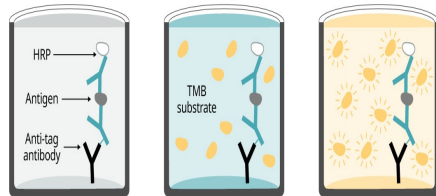
**Success from the first experiment**  
Confirmed specificity



**Ethical standards compliant**  
Animal-free production

Sandwich ELISA - Mouse Galectin-1 ELISA Kit  
(ab253212)

To learn more about the advantages of recombinant antibodies see [here](#).



SimpleStep ELISA technology allows the formation of the antibody-antigen complex in one single step, reducing assay time to 90 minutes. Add samples or standards and antibody mix to wells all at once, incubate, wash, and add your final substrate. See protocol for a detailed step-by-step guide.

Sandwich ELISA - Mouse Galectin-1 ELISA Kit  
(ab253212)

**Get more done with SimpleStep ELISA**



**Easy to use**  
Single-wash 90-minute protocol



**Flexible**  
Matched antibody pairs available



**Precision antibodies**  
High sensitivity, specificity and reproducibility



**Scalable**  
Now in 10-pack and 384-well formats

Sandwich ELISA - Mouse Galectin-1 ELISA Kit  
(ab253212)

To learn more about the advantages of SimpleStep ELISA<sup>®</sup> kits see [here](#).

**Please note:** All products are "FOR RESEARCH USE ONLY. NOT FOR USE IN DIAGNOSTIC PROCEDURES"

### **Our Abpromise to you: Quality guaranteed and expert technical support**

---

- Replacement or refund for products not performing as stated on the datasheet
- Valid for 12 months from date of delivery
- Response to your inquiry within 24 hours
- We provide support in Chinese, English, French, German, Japanese and Spanish
- Extensive multi-media technical resources to help you
- We investigate all quality concerns to ensure our products perform to the highest standards

If the product does not perform as described on this datasheet, we will offer a refund or replacement. For full details of the Abpromise, please visit <https://www.abcam.com/abpromise> or contact our technical team.

### **Terms and conditions**

---

- Guarantee only valid for products bought direct from Abcam or one of our authorized distributors