

Mouse HSP60 ELISA Kit ab208344

Recombinant SimpleStep ELISA®

5 Images

Overview

Product name	Mouse HSP60 ELISA Kit				
Detection method	Colorimetric				
Precision	Intra-assay				
	Sample	n	Mean	SD	CV%
	NIH/3T3	5			6.8%
	Inter-assay				
	Sample	n	Mean	SD	CV%
	NIH/3T3	3			12.5%
Sample type	Cell culture extracts, Tissue Extracts				
Assay type	Sandwich (quantitative)				
Sensitivity	5.1 pg/ml				
Range	46.875 pg/ml - 3000 pg/ml				
Recovery	Sample specific recovery				
	Sample type		Average %		Range
	Serum		98		81.2% - 110.2%
	Cell culture media		92.3		91.2% - 93%
Assay time	1h 30m				
Assay duration	One step assay				
Species reactivity	Reacts with: Mouse				
Product overview	Mouse HSP60 ELISA Kit (ab208344) is a single-wash 90 min sandwich ELISA designed for the quantitative measurement of HSP60 protein in cell culture extracts and tissue extracts. It uses our proprietary SimpleStep ELISA® technology. Quantitate Mouse HSP60 with 5.1 pg/ml sensitivity.				

SimpleStep ELISA® technology employs capture antibodies conjugated to an affinity tag that is recognized by the monoclonal antibody used to coat our SimpleStep ELISA® plates. This approach to sandwich ELISA allows the formation of the antibody-analyte sandwich complex in a single step, significantly reducing assay time. See the SimpleStep ELISA® protocol summary in the image section for further details. Our SimpleStep ELISA® technology provides several benefits:

- Single-wash protocol reduces assay time to 90 minutes or less
- High sensitivity, specificity and reproducibility from superior antibodies
- Fully validated in biological samples
- 96-wells plate breakable into 12 x 8 wells strips

A 384-well SimpleStep ELISA® microplate (**ab203359**) is available to use as an alternative to the 96-well microplate provided with SimpleStep ELISA® kits.

## Notes

HSP60 is mitochondrial matrix protein functioning in protein folding and macromolecular assembly. HSP60 may also prevent miss-folding and promote the refolding and proper assembly of unfolded polypeptides generated under stress conditions in the mitochondrial matrix.

Abcam has not and does not intend to apply for the REACH Authorisation of customers' uses of products that contain European Authorisation list (Annex XIV) substances.

It is the responsibility of our customers to check the necessity of application of REACH Authorisation, and any other relevant authorisations, for their intended uses.

## Platform

Pre-coated microplate (12 x 8 well strips)

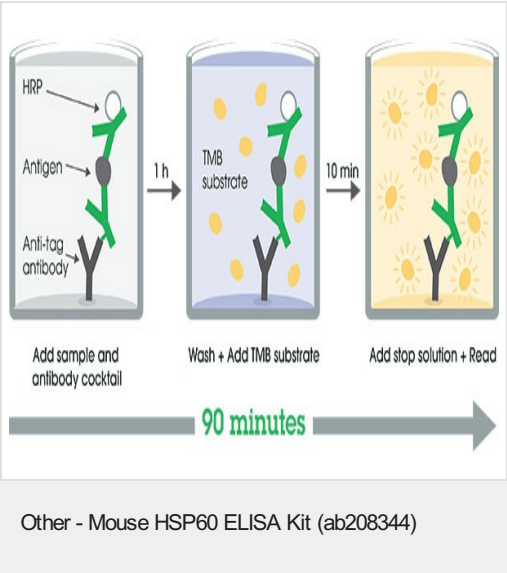
## Properties

**Storage instructions** Store at +4°C. Please refer to protocols.

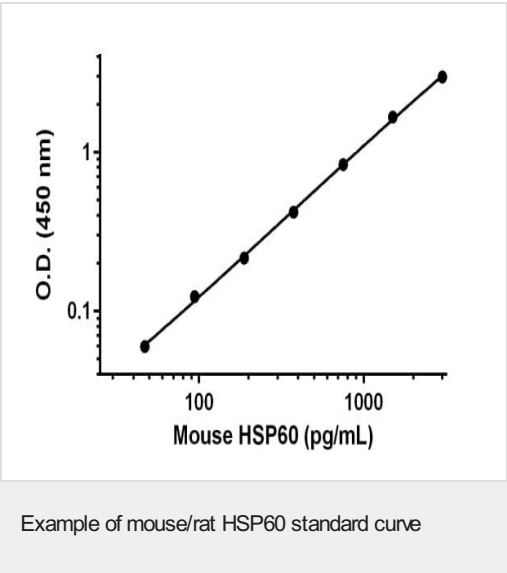
Components	1 x 96 tests
10X Mouse HSP60 Capture Antibody	1 x 600µl
10X Mouse HSP60 Detector Antibody	1 x 600µl
10X Wash Buffer PT (ab206977)	1 x 20ml
50X Cell Extraction Enhancer Solution (ab193971)	1 x 1ml
5X Cell Extraction Buffer PTR (ab193970)	1 x 10ml
Antibody Diluent 5BR	1 x 6ml
Mouse HSP60 Lyophilized Recombinant Protein	2 vials
Plate Seals	1 unit
Sample Diluent NS (ab193972)	1 x 12ml
SimpleStep Pre-Coated 96-Well Microplate (ab206978)	1 unit

Components	1 x 96 tests
Stop Solution	1 x 12ml
TMB Development Solution	1 x 12ml

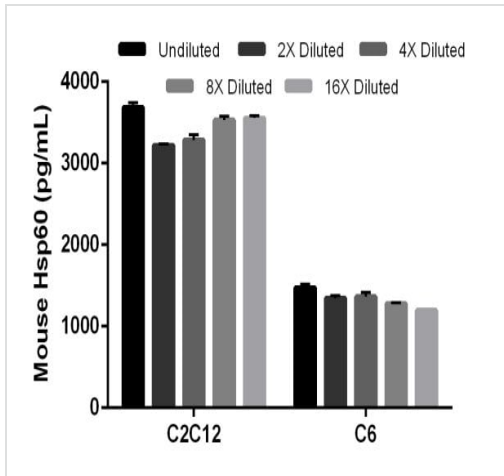
Images



SimpleStep ELISA technology allows the formation of the antibody-antigen complex in one single step, reducing assay time to 90 minutes. Add samples or standards and antibody mix to wells all at once, incubate, wash, and add your final substrate. See protocol for a detailed step-by-step guide.

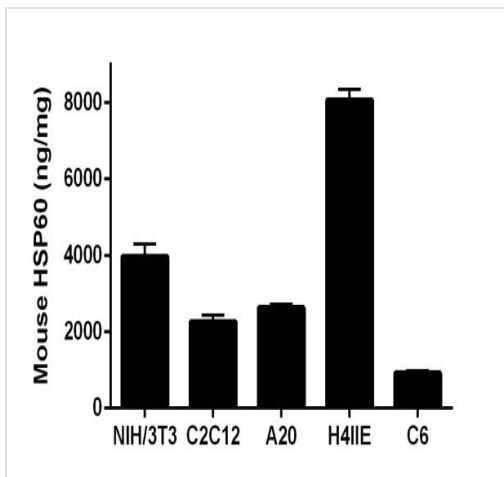


Background-subtracted data values (mean +/- SD) are graphed.



Interpolated concentrations of native HSP60 in mouse C2C12 cell extract sample and rat C6 cell extract sample based on a 1.5 µg/mL extract load

The concentrations of HSP60 were measured in duplicate and interpolated from the HSP60 standard curve and corrected for sample dilution. The interpolated dilution factor corrected values are plotted (mean +/- SD, n=2). The mean HSP60 concentration was determined to be 3,456 pg/mL in C2C12 cell extract sample and 1,347 pg/mL in C6 cell extract sample.



Interpolated concentrations of native HSP60 in mouse NIH/3T3, C2C12 and A20 extract samples and rat H4IIE and C6 cell extract samples

The concentrations of HSP60 were measured in three different dilutions in duplicate and interpolated from the HSP60 standard curve and corrected for sample dilution. The interpolated dilution factor corrected values are plotted in ng of HSP60 per mg of extract (mean +/- SD, n=3).

Powered by  
recombinant antibodies



**Research with  
confidence**  
Consistent and  
reproducible results



**Long-term and  
scalable supply**  
Recombinant  
technology



**Success from the  
first experiment**  
Confirmed  
specificity



**Ethical standards  
compliant**  
Animal-free  
production

Sandwich ELISA - Mouse HSP60 ELISA Kit  
(ab208344)

To learn more about the advantages of recombinant antibodies see [here](#).

**Please note:** All products are "FOR RESEARCH USE ONLY. NOT FOR USE IN DIAGNOSTIC PROCEDURES"

### Our Abpromise to you: Quality guaranteed and expert technical support

---

- Replacement or refund for products not performing as stated on the datasheet
- Valid for 12 months from date of delivery
- Response to your inquiry within 24 hours
- We provide support in Chinese, English, French, German, Japanese and Spanish
- Extensive multi-media technical resources to help you
- We investigate all quality concerns to ensure our products perform to the highest standards

If the product does not perform as described on this datasheet, we will offer a refund or replacement. For full details of the Abpromise, please visit <https://www.abcam.com/abpromise> or contact our technical team.

### Terms and conditions

---

- Guarantee only valid for products bought direct from Abcam or one of our authorized distributors