

Mouse IL-20 ELISA Kit ab235645

Recombinant SimpleStep ELISA<sup>®</sup>

1 References 7 Images

Overview

Product name	Mouse IL-20 ELISA Kit				
Detection method	Colorimetric				
Precision	Intra-assay				
	Sample	n	Mean	SD	CV%
	Serum	5			3.1%
	Inter-assay				
	Sample	n	Mean	SD	CV%
	Serum	3			7.4%
Sample type	Cell culture supernatant, Serum, Hep Plasma, EDTA Plasma, Cit plasma				
Assay type	Sandwich (quantitative)				
Sensitivity	7 pg/ml				
Range	15.6 pg/ml - 1000 pg/ml				
Recovery	Sample specific recovery				
	Sample type		Average %		Range
	Serum		105		95% - 120%
	Cell culture media		101		92% - 111%
	Hep Plasma		99		91% - 114%
	EDTA Plasma		88		79% - 103%
	Cit plasma		108		99% - 115%
Assay time	1h 30m				
Assay duration	One step assay				

**Species reactivity****Reacts with:** Mouse**Product overview**

Mouse IL-20 ELISA Kit (ab235645) is a single-wash 90 min sandwich ELISA designed for the quantitative measurement of IL-20 protein in cell culture supernatant, cit plasma, edta plasma, hep plasma, and serum. It uses our proprietary SimpleStep ELISA® technology. Quantitate Mouse IL-20 with 7 pg/ml sensitivity.

SimpleStep ELISA® technology employs capture antibodies conjugated to an affinity tag that is recognized by the monoclonal antibody used to coat our SimpleStep ELISA® plates. This approach to sandwich ELISA allows the formation of the antibody-analyte sandwich complex in a single step, significantly reducing assay time. See the SimpleStep ELISA® protocol summary in the image section for further details. Our SimpleStep ELISA® technology provides several benefits:

- Single-wash protocol reduces assay time to 90 minutes or less
- High sensitivity, specificity and reproducibility from superior antibodies
- Fully validated in biological samples
- 96-wells plate breakable into 12 x 8 wells strips

A 384-well SimpleStep ELISA® microplate ([ab203359](#)) is available to use as an alternative to the 96-well microplate provided with SimpleStep ELISA® kits.

**Platform**

Pre-coated microplate (12 x 8 well strips)

**Properties****Storage instructions**

Store at +4°C. Please refer to protocols.

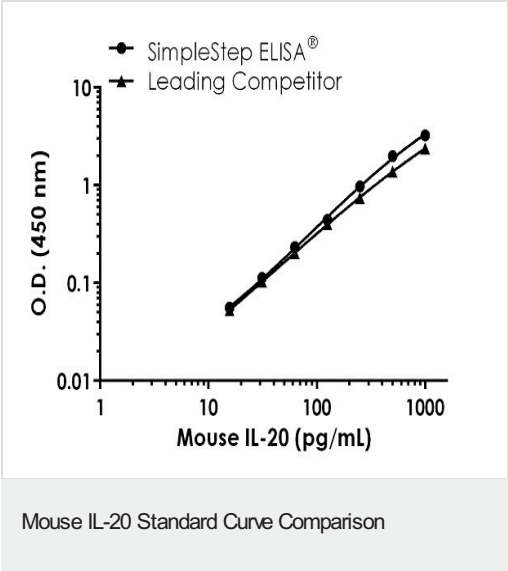
Components	1 x 96 tests
10X Mouse IL-20 Capture Antibody	1 x 600µl
10X Mouse IL-20 Detector Antibody	1 x 600µl
10X Wash Buffer PT (ab206977)	1 x 20ml
Antibody Diluent 4BR	1 x 6ml
Mouse IL-20 Lyophilized Recombinant Protein	2 vials
Plate Seals	1 unit
Sample Diluent NS (ab193972)	1 x 50ml
SimpleStep Pre-Coated 96-Well Microplate (ab206978)	1 unit
Stop Solution	1 x 12ml
TMB Development Solution	1 x 12ml

**Function**

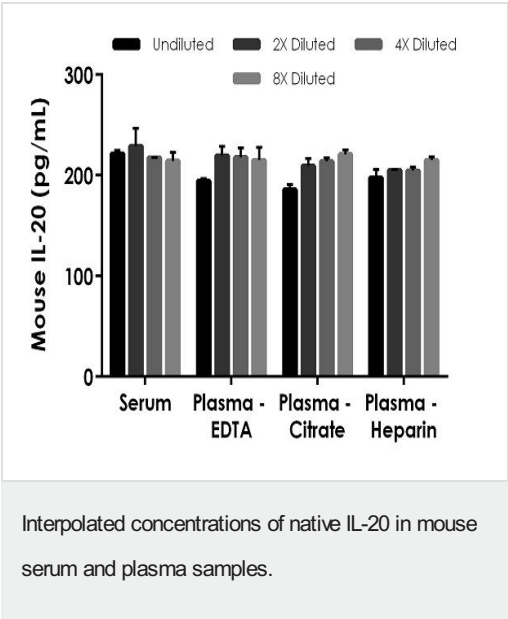
Cytokine that may be involved in epidermal function and psoriasis. Acts through STAT3.

<b>Tissue specificity</b>	Expressed at very low levels in skin, trachea, and other tissues.
<b>Sequence similarities</b>	Belongs to the IL-10 family.
<b>Cellular localization</b>	Secreted.

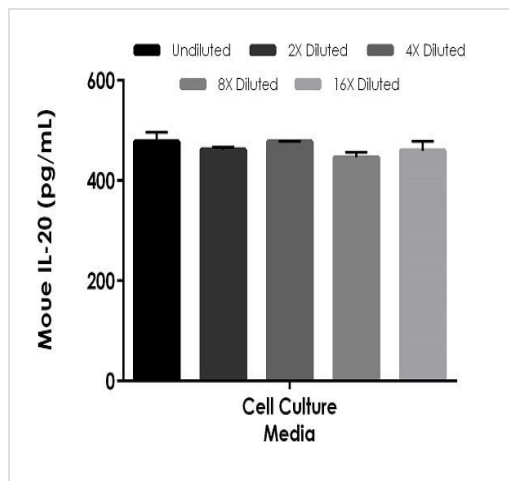
Images



Standard Curve comparison between Mouse IL-20 SimpleStep ELISA kit and traditional ELISA kit from leading competitor. SimpleStep ELISA kit shows comparable sensitivity.

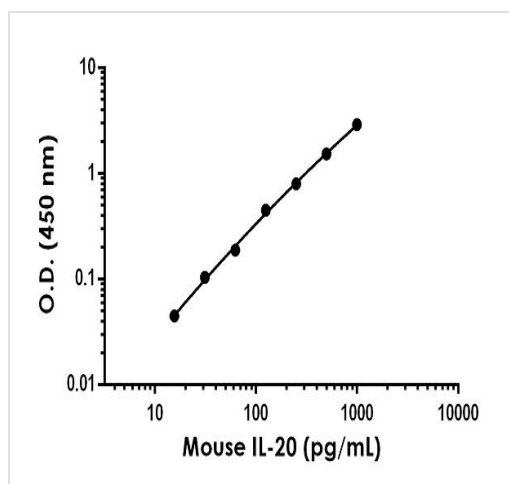


The concentrations of IL-20 were measured in duplicates, interpolated from the IL-20 standard curves and corrected for sample dilution. Undiluted samples are as follows: serum 50%, plasma (EDTA) 50%, plasma (citrate) 50% and plasma (heparin) 50%. The interpolated dilution factor corrected values are plotted (mean +/- SD, n=2). The mean IL-20 concentration was determined to be 221 pg/mL in serum, 212 pg/mL in plasma (EDTA), 207 pg/mL in plasma (citrate), and 206 pg/mL in plasma (heparin).



The concentrations of IL-20 were measured in duplicate and interpolated from the IL-20 standard curve and corrected for sample dilution.

Interpolated concentrations of spike IL-20 in Mouse cell culture media sample.



Background-subtracted data values (mean  $\pm$  SD) are graphed.

Example of mouse IL-20 standard curve in Sample Diluent NS.

Powered by  
recombinant antibodies



**Research with confidence**  
Consistent and reproducible results



**Long-term and scalable supply**  
Recombinant technology



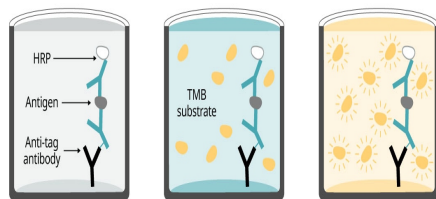
**Success from the first experiment**  
Confirmed specificity



**Ethical standards compliant**  
Animal-free production

Sandwich ELISA - Mouse IL-20 ELISA Kit  
(ab235645)

To learn more about the advantages of recombinant antibodies see [here](#).



Add sample and antibody cocktail      Wash + add TMB substrate      Add stop solution + Read

**90 minutes**

Sandwich ELISA - Mouse IL-20 ELISA Kit  
(ab235645)

SimpleStep ELISA technology allows the formation of the antibody-antigen complex in one single step, reducing assay time to 90 minutes. Add samples or standards and antibody mix to wells all at once, incubate, wash, and add your final substrate. See protocol for a detailed step-by-step guide.

**Get more done with  
SimpleStep ELISA**



**Easy to use**  
Single-wash 90-minute  
protocol



**Flexible**  
Matched antibody pairs  
available



**Precision antibodies**  
High sensitivity, specificity  
and reproducibility



**Scalable**  
Now in 10-pack and  
384-well formats

Sandwich ELISA - Mouse IL-20 ELISA Kit  
(ab235645)

To learn more about the advantages of SimpleStep ELISA® kits  
see [here](#).

**Please note:** All products are "FOR RESEARCH USE ONLY. NOT FOR USE IN DIAGNOSTIC PROCEDURES"

### Our Abpromise to you: Quality guaranteed and expert technical support

---

- Replacement or refund for products not performing as stated on the datasheet
- Valid for 12 months from date of delivery
- Response to your inquiry within 24 hours
- We provide support in Chinese, English, French, German, Japanese and Spanish
- Extensive multi-media technical resources to help you
- We investigate all quality concerns to ensure our products perform to the highest standards

If the product does not perform as described on this datasheet, we will offer a refund or replacement. For full details of the Abpromise, please visit <https://www.abcam.com/abpromise> or contact our technical team.

### Terms and conditions

---

- Guarantee only valid for products bought direct from Abcam or one of our authorized distributors