

Mouse IL-6 ELISA Kit ab100712

124 References 6 Images

Overview

Product name	Mouse IL-6 ELISA Kit
Detection method	Colorimetric
Sample type	Cell culture supernatant, Serum, Plasma
Assay type	Sandwich (quantitative)
Sensitivity	< 2 pg/ml
Range	0.82 pg/ml - 600 pg/ml
Recovery	94 %

Sample specific recovery

Sample type	Average %	Range
Cell culture supernatant	96.18	86% - 103%
Serum	93.39	83% - 103%
Plasma	94.53	84% - 104%

Assay duration Multiple steps standard assay

Species reactivity Reacts with: Mouse

Predicted to work with: Human 

Product overview Mouse IL-6 ELISA kit is designed for the quantitative measurement of Mouse IL-6 in serum, plasma and cell culture supernatants.

This assay employs an antibody specific for Mouse IL-6 coated on a 96-well plate. Standards and samples are pipetted into the wells and IL-6 present in a sample is bound to the wells by the immobilized antibody. The wells are washed and biotinylated anti-Mouse IL-6 antibody is added. After washing away unbound biotinylated antibody, HRP-conjugated streptavidin is pipetted to the wells. The wells are again washed, a TMB substrate solution is added to the wells and color develops in proportion to the amount of IL-6 bound. The Stop Solution changes the color from blue to yellow, and the intensity of the color is measured at 450 nm.

Platform Microplate

## Properties

### Storage instructions

Store at -20°C. Please refer to protocols.

Components	1 x 96 tests
200X HRP-Streptavidin Concentrate	1 x 200µl
20X Wash Buffer	1 x 25ml
5X Assay Diluent	1 x 15ml
Biotinylated anti-Mouse IL-6	2 vials
IL-6 Microplate (12 x 8 wells)	1 unit
Recombinant mouse IL-6 Standard (lyophilized)	2 vials
Stop Solution	1 x 8ml
TMB One-Step Substrate Reagent	1 x 12ml

### Function

Cytokine with a wide variety of biological functions. It is a potent inducer of the acute phase response. Plays an essential role in the final differentiation of B-cells into Ig-secreting cells. Involved in lymphocyte and monocyte differentiation. It induces myeloma and plasmacytoma growth and induces nerve cells differentiation. Acts on B-cells, T-cells, hepatocytes, hematopoietic progenitor cells and cells of the CNS. Also acts as a myokine. It is discharged into the bloodstream after muscle contraction and acts to increase the breakdown of fats and to improve insulin resistance.

### Involvement in disease

Genetic variations in IL6 are associated with susceptibility to rheumatoid arthritis systemic juvenile (RASJ) [MIM:604302]. An inflammatory articular disorder with systemic-onset beginning before the age of 16. It represents a subgroup of juvenile arthritis associated with severe extraarticular features and occasionally fatal complications. During active phases of the disorder, patients display a typical daily spiking fever, an evanescent macular rash, lymphadenopathy, hepatosplenomegaly, serositis, myalgia and arthritis.

Note=A IL6 promoter polymorphism is associated with a lifetime risk of development of Kaposi sarcoma in HIV-infected men.

### Sequence similarities

Belongs to the IL-6 superfamily.

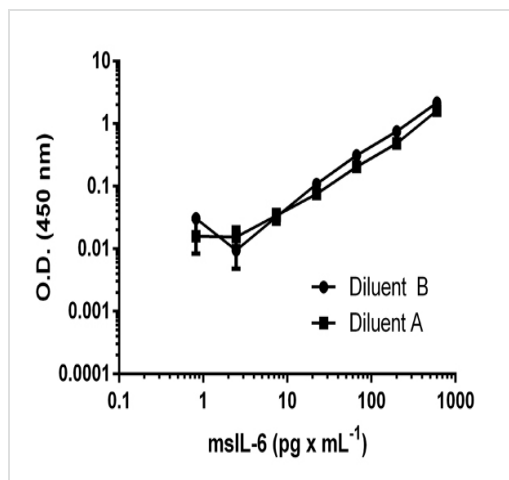
### Post-translational modifications

N- and O-glycosylated.

### Cellular localization

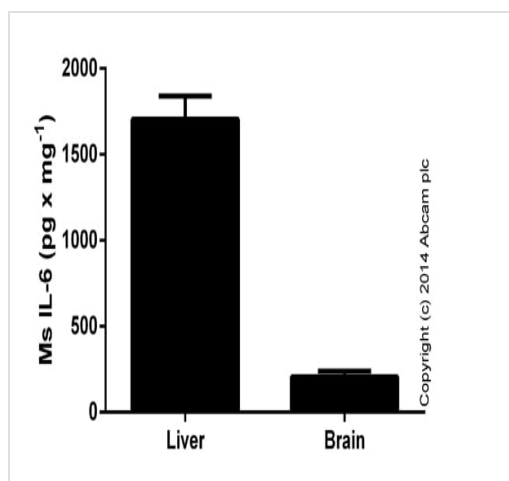
Secreted.

## Images



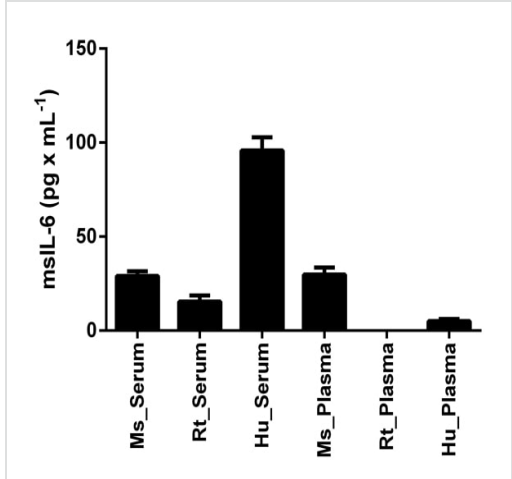
Standard curve of msIL-6 in different diluents with background signal subtracted (duplicates; +/- SD).

Sandwich ELISA - IL-6 (Interleukin-6) Mouse ELISA Kit (ab100712)



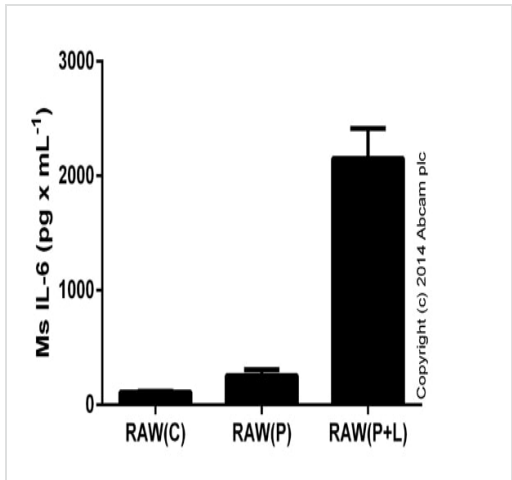
IL-6 measured in mouse tissue lysates (diluted in the range of 1:20 to 1:200; expressed as per mg of extracted protein), with background signal subtracted (duplicates; +/- SD).

Sandwich ELISA - IL-6 (Interleukin-6) Mouse ELISA Kit (ab100712)



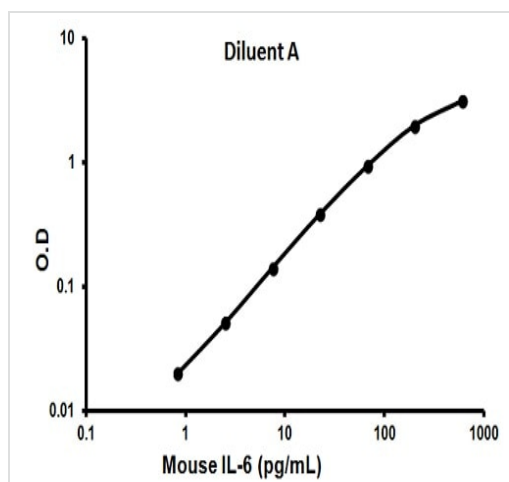
msIL-6 measured in biological fluids, background signal subtracted (duplicates +/- SD).

Sandwich ELISA - IL-6 (Interleukin-6) Mouse ELISA Kit (ab100712)



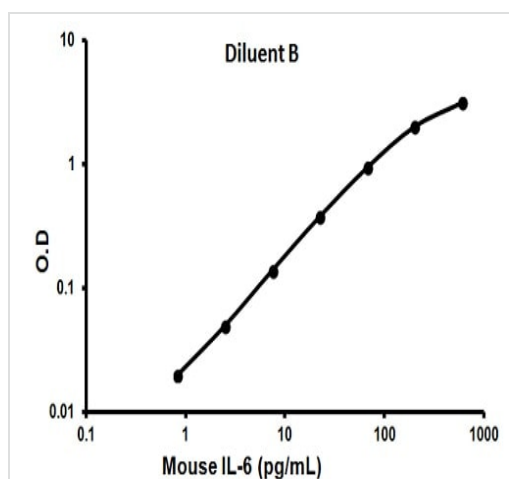
IL-6 detected in supernatants from RAW 246.7 control cells (C) or cells stimulated for 24 hours with 50 ng x mL<sup>-1</sup> of PMA ([ab120297](#)) (P), or 24 hours with PMA and 1 ug x mL<sup>-1</sup> of LPS (Sigma) (P+L) for the last 6 hours. Results shown after background signal was subtracted (duplicates +/- SD).

Sandwich ELISA - IL-6 (Interleukin-6) Mouse ELISA Kit (ab100712)



Representative standard curve using ab100712

Typical standard curve



Representative standard curve using ab100712

Typical standard curve

**Please note:** All products are "FOR RESEARCH USE ONLY. NOT FOR USE IN DIAGNOSTIC PROCEDURES"

### Our Abpromise to you: Quality guaranteed and expert technical support

- Replacement or refund for products not performing as stated on the datasheet
- Valid for 12 months from date of delivery
- Response to your inquiry within 24 hours
- We provide support in Chinese, English, French, German, Japanese and Spanish
- Extensive multi-media technical resources to help you
- We investigate all quality concerns to ensure our products perform to the highest standards

If the product does not perform as described on this datasheet, we will offer a refund or replacement. For full details of the Abpromise, please visit <https://www.abcam.com/abpromise> or contact our technical team.

#### **Terms and conditions**

---

- Guarantee only valid for products bought direct from Abcam or one of our authorized distributors