

Product datasheet

Mouse IL-7 ELISA Kit ab227902

Recombinant SimpleStep ELISA

6 Images

Overview

Product name	Mouse IL-7 ELISA Kit				
Detection method	Colorimetric				
Precision	Intra-assay				
	Sample	n	Mean	SD	CV%
	Spiked media	8			2.9%
	Inter-assay				
	Sample	n	Mean	SD	CV%
	Spiked media	3			5%
Sample type	Cell culture supernatant, Serum, Hep Plasma				
Assay type	Sandwich (quantitative)				
Sensitivity	12.046 pg/ml				
Range	39.06 pg/ml - 2500 pg/ml				
Recovery	Sample specific recovery				
	Sample type	Average %		Range	
	Cell culture supernatant	107		103% - 105%	
	Serum	85		83% - 88%	
	Hep Plasma	83		81% - 83%	
Assay time	1h 30m				
Assay duration	One step assay				
Species reactivity	Reacts with: Mouse				
Product overview	Mouse IL-7 ELISA Kit (ab227902) is a single-wash 90 min sandwich ELISA designed for the quantitative measurement of IL-7 protein in cell culture supernatant, hep plasma, and serum. It				

uses our proprietary SimpleStep ELISA® technology. Quantitate Mouse IL-7 with 12.046 pg/ml sensitivity.

SimpleStep ELISA® technology employs capture antibodies conjugated to an affinity tag that is recognized by the monoclonal antibody used to coat our SimpleStep ELISA® plates. This approach to sandwich ELISA allows the formation of the antibody-analyte sandwich complex in a single step, significantly reducing assay time. See the SimpleStep ELISA® protocol summary in the image section for further details. Our SimpleStep ELISA® technology provides several benefits:

- Single-wash protocol reduces assay time to 90 minutes or less
- High sensitivity, specificity and reproducibility from superior antibodies
- Fully validated in biological samples
- 96-wells plate breakable into 12 x 8 wells strips

A 384-well SimpleStep ELISA® microplate ([ab203359](#)) is available to use as an alternative to the 96-well microplate provided with SimpleStep ELISA® kits.

Unsuitable for EDTA plasma.

Platform Pre-coated microplate (12 x 8 well strips)

Properties

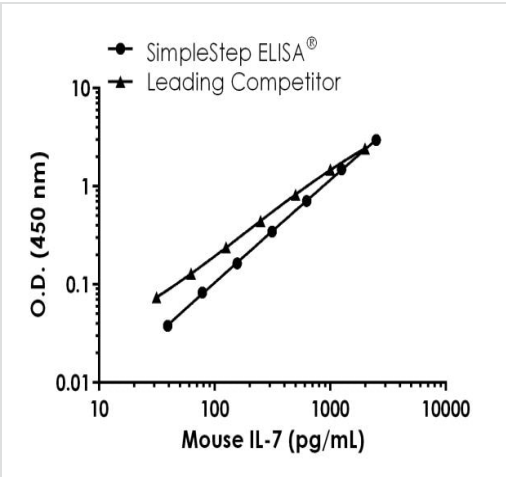
Storage instructions Store at +4°C. Please refer to protocols.

Components	1 x 96 tests
10X Wash Buffer PT (ab206977)	1 x 20ml
Antibody Diluent CPI - HAMA Blocker (ab193969)	1 x 6ml
10X Mouse IL-7 Capture Antibody	1 x 600µl
10X Mouse IL-7 Detector Antibody	1 x 600µl
Mouse IL-7 Lyophilized Recombinant Protein	2 vials
Plate Seals	1 unit
Sample Diluent NS (ab193972)	1 x 50ml
SimpleStep Pre-Coated 96-Well Microplate (ab206978)	1 unit
Stop Solution	1 x 12ml
TMB Development Solution	1 x 12ml

Function Hematopoietic growth factor capable of stimulating the proliferation of lymphoid progenitors. It is important for proliferation during certain stages of B-cell maturation.

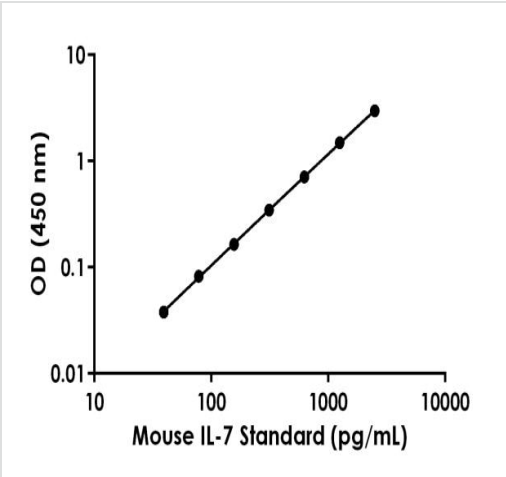
Sequence similarities Belongs to the IL-7/IL-9 family.

Images



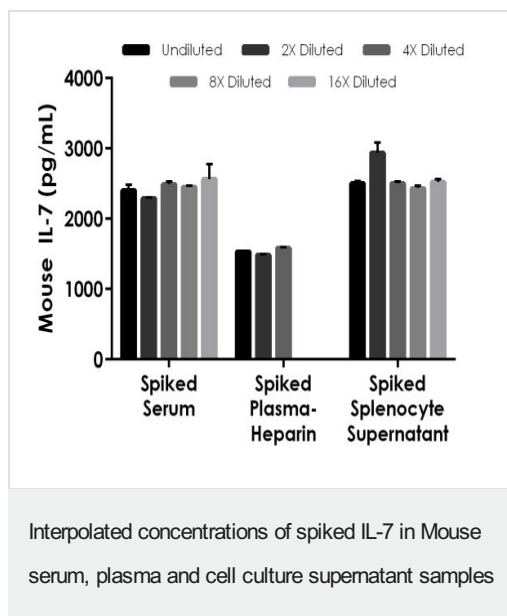
Mouse IL-7 Standard Curve Comparison Data

Standard curve comparison between mouse IL-7 SimpleStep ELISA® kit and traditional ELISA kit from leading competitor. SimpleStep ELISA kit shows comparable sensitivity.

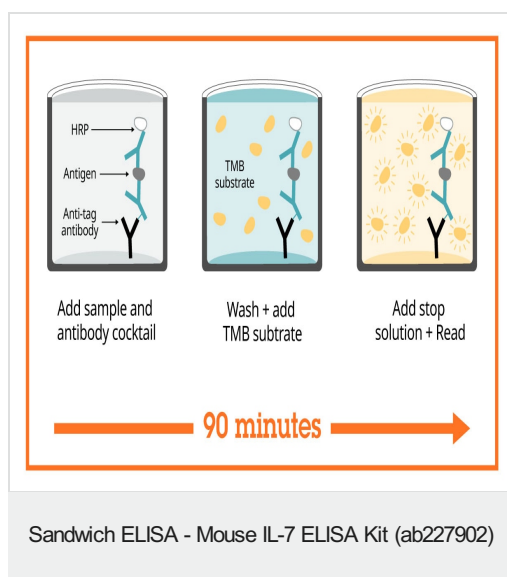


Example of Mouse IL-7 standard curve in Sample Diluent NS

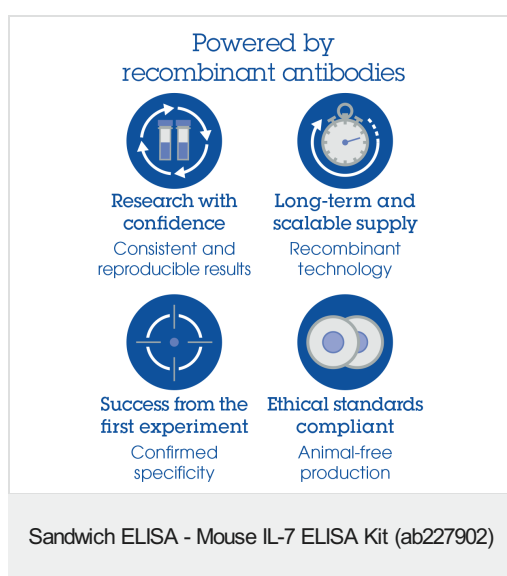
Background-subtracted data values (mean +/- SD) are graphed.



The concentrations of IL-7 were measured in duplicates, interpolated from the IL-7 standard curves and corrected for sample dilution. Undiluted samples are as follows: serum 50%, plasma (heparin) 50% and splenocyte supernatant 100%. The interpolated dilution factor corrected values are plotted (mean \pm SD, $n=2$). The mean IL-7 concentration was determined to be 2441.13 pg/mL in serum, 1535.45 pg/mL in plasma (heparin), and 2581.66g/mL in and splenocyte supernatant.



SimpleStep ELISA technology allows the formation of the antibody-antigen complex in one single step, reducing assay time to 90 minutes. Add samples or standards and antibody mix to wells all at once, incubate, wash, and add your final substrate. See protocol for a detailed step-by-step guide.



To learn more about the advantages of recombinaant antibodies see [here](#).

**Get more done with
SimpleStep ELISA**



Easy to use
Single-wash 90-minute
protocol



Flexible
Matched antibody pairs
available



Precision antibodies
High sensitivity, specificity
and reproducibility



Scalable
Now in 10-pack and
384-well formats

To learn more about the advantages of SimpleStep ELISA[®] kits
see [here](#).

Sandwich ELISA - Mouse IL-7 ELISA Kit (ab227902)

Please note: All products are "FOR RESEARCH USE ONLY. NOT FOR USE IN DIAGNOSTIC PROCEDURES"

Our Abpromise to you: Quality guaranteed and expert technical support

- Replacement or refund for products not performing as stated on the datasheet
- Valid for 12 months from date of delivery
- Response to your inquiry within 24 hours
- We provide support in Chinese, English, French, German, Japanese and Spanish
- Extensive multi-media technical resources to help you
- We investigate all quality concerns to ensure our products perform to the highest standards

If the product does not perform as described on this datasheet, we will offer a refund or replacement. For full details of the Abpromise, please visit <https://www.abcam.com/abpromise> or contact our technical team.

Terms and conditions

- Guarantee only valid for products bought direct from Abcam or one of our authorized distributors