

Mouse Interferon alpha 1 ELISA Kit ab252352

Recombinant SimpleStep ELISA[®]

6 References 6 Images

Overview

Product name	Mouse Interferon alpha 1 ELISA Kit				
Detection method	Colorimetric				
Precision	Intra-assay				
	Sample	n	Mean	SD	CV%
	serum	8			2.6%
	Inter-assay				
	Sample	n	Mean	SD	CV%
	serum	3			7.7%
Sample type	Serum, Cell culture media, Hep Plasma, Cit plasma				
Assay type	Sandwich (quantitative)				
Sensitivity	7 pg/ml				
Range	15.6 pg/ml - 1000 pg/ml				
Recovery	Sample specific recovery				
	Sample type		Average %		Range
	Serum		89		82% - 95%
	Cell culture media		100		95% - 106%
	Hep Plasma		89		88% - 91%
	Cit plasma		89		85% - 92%
Assay time	1h 30m				
Assay duration	One step assay				
Species reactivity	Reacts with: Mouse				

Product overview

Mouse Interferon alpha ELISA Kit (ab252352) is a single-wash 90 min sandwich ELISA designed for the quantitative measurement of IFN-alpha protein in cell culture media, cit plasma, hep plasma, and serum. It uses our proprietary SimpleStep ELISA® technology. Quantitate Mouse IFN-alpha with 7 pg/ml sensitivity.

SimpleStep ELISA® technology employs capture antibodies conjugated to an affinity tag that is recognized by the monoclonal antibody used to coat our SimpleStep ELISA® plates. This approach to sandwich ELISA allows the formation of the antibody-analyte sandwich complex in a single step, significantly reducing assay time. See the SimpleStep ELISA® protocol summary in the image section for further details. Our SimpleStep ELISA® technology provides several benefits:

- Single-wash protocol reduces assay time to 90 minutes or less
- High sensitivity, specificity and reproducibility from superior antibodies
- Fully validated in biological samples
- 96-wells plate breakable into 12 x 8 wells strips

A 384-well SimpleStep ELISA® microplate ([ab203359](#)) is available to use as an alternative to the 96-well microplate provided with SimpleStep ELISA® kits.

Platform

Pre-coated microplate (12 x 8 well strips)

Properties

Storage instructions

Store at +4°C. Please refer to protocols.

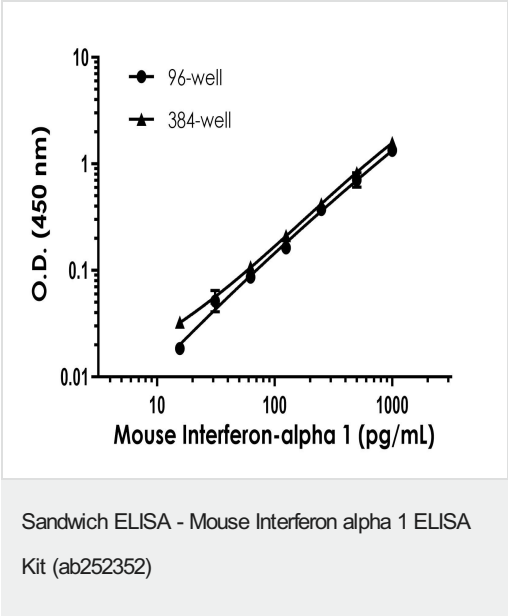
Components	1 x 96 tests	10 x 96 tests	1 x 384 tests
10X Mouse Interferon alpha 1 Capture Antibody	1 x 600µl	1 x 6000µl	1 x 600µl
10X Mouse Interferon alpha 1 Detector Antibody	1 x 600µl	1 x 6000µl	1 x 600µl
10X Wash Buffer PT (ab206977)	1 x 20ml	1 x 200ml	1 x 20ml
384 well CaptSure™ microplates	0 x 0 unit	0 x 0 unit	1 unit
Antibody Diluent 4BR	1 x 6ml	10 x 6ml	1 x 6ml
Mouse Interferon alpha 1 Lyophilized Recombinant Protein	2 vials	2 x 10 vials	2 vials
Plate Seals	1 unit	1 x 10 units	1 unit
Sample Diluent NS (ab193972)	1 x 50ml	2 x 250ml	1 x 50ml
SimpleStep Pre-Coated 96-Well Microplate (ab206978)	1 unit	1 x 10 units	0 x 0 unit
Stop Solution	1 x 12ml	1 x 120ml	2 x 12ml
TMB Development Solution	1 x 12ml	1 x 120ml	2 x 12ml

Function

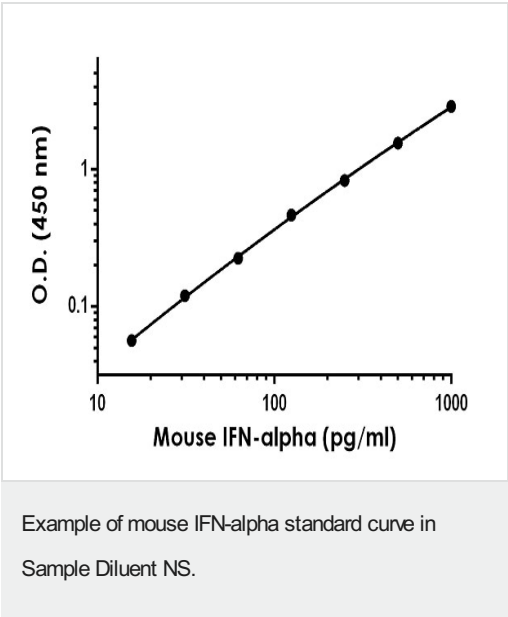
Produced by macrophages, IFN-alpha have antiviral activities. Interferon stimulates the production

	of two enzymes: a protein kinase and an oligoadenylate synthetase.
Sequence similarities	Belongs to the alpha/beta interferon family.
Cellular localization	Secreted.

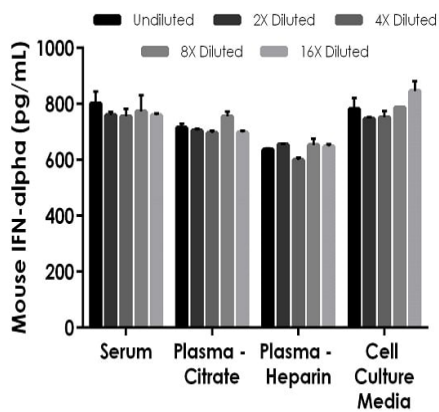
Images



Example of mouse Interferon-alpha 1 standard curve in 96-well vs. 384-well plate. Background-subtracted data values (mean +/- SD) are graphed.

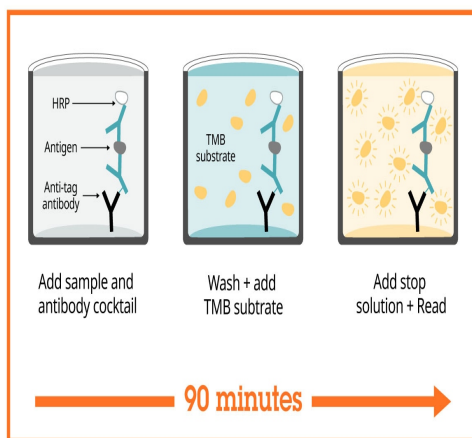


The IFN-alpha standard curve was prepared as described in Section 10. Raw data values are shown in the table. Background-subtracted data values (mean +/- SD) are graphed.



Interpolated concentrations of spike IFN-alpha in mouse serum, plasma and cell culture media samples.

The concentrations of IFN-alpha were measured in duplicates, interpolated from the IFN-alpha standard curves and corrected for sample dilution. Undiluted samples are as follows: serum 50%, plasma (citrate) 50%, plasma (heparin) 50%, and RPMI cell culture media containing 10% fetal bovine serum 100%.



SimpleStep ELISA technology allows the formation of the antibody-antigen complex in one single step, reducing assay time to 90 minutes. Add samples or standards and antibody mix to wells all at once, incubate, wash, and add your final substrate. See protocol for a detailed step-by-step guide.

Sandwich ELISA - Mouse Interferon alpha 1 ELISA Kit (ab252352)

Powered by
recombinant antibodies



Research with confidence
Consistent and reproducible results



Long-term and scalable supply
Recombinant technology



Success from the first experiment
Confirmed specificity



Ethical standards compliant
Animal-free production

Sandwich ELISA - Mouse IFN-alpha ELISA Kit
(ab252352)

To learn more about the advantages of recombinant antibodies see [here](#).

**Get more done with
SimpleStep ELISA**



Easy to use
Single-wash 90-minute protocol



Flexible
Matched antibody pairs available



Precision antibodies
High sensitivity, specificity and reproducibility



Scalable
Now in 10-pack and 384-well formats

Sandwich ELISA - Mouse Interferon alpha 1 ELISA
Kit (ab252352)

To learn more about the advantages of SimpleStep ELISA[®] kits see [here](#).

Please note: All products are "FOR RESEARCH USE ONLY. NOT FOR USE IN DIAGNOSTIC PROCEDURES"

Our Abpromise to you: Quality guaranteed and expert technical support

- Replacement or refund for products not performing as stated on the datasheet
- Valid for 12 months from date of delivery
- Response to your inquiry within 24 hours

- We provide support in Chinese, English, French, German, Japanese and Spanish
- Extensive multi-media technical resources to help you
- We investigate all quality concerns to ensure our products perform to the highest standards

If the product does not perform as described on this datasheet, we will offer a refund or replacement. For full details of the Abpromise, please visit <https://www.abcam.com/abpromise> or contact our technical team.

Terms and conditions

- Guarantee only valid for products bought direct from Abcam or one of our authorized distributors