

Mouse MASPIN ELISA Kit ab238270

Recombinant SimpleStep ELISA

4 Images

Overview

Product name	Mouse MASPIN ELISA Kit				
Detection method	Colorimetric				
Precision	Intra-assay				
	Sample	n	Mean	SD	CV%
	Skin extract	8			6.6%
Sample type	Tissue Extracts				
Assay type	Sandwich (quantitative)				
Sensitivity	18.2 pg/ml				
Range	46.88 pg/ml - 3000 pg/ml				
Recovery	Sample specific recovery				
	Sample type	Average %		Range	
	Tissue Extracts	98		% - %	
Assay time	1h 30m				
Assay duration	One step assay				
Species reactivity	Reacts with: Mouse				
Product overview	Mouse MASPIN ELISA Kit (ab238270) is a single-wash 90 min sandwich ELISA designed for the quantitative measurement of MASPIN protein in tissue extracts. It uses our proprietary SimpleStep ELISA® technology. Quantitate Mouse MASPIN with 18.2 pg/ml sensitivity.				

SimpleStep ELISA® technology employs capture antibodies conjugated to an affinity tag that is recognized by the monoclonal antibody used to coat our SimpleStep ELISA® plates. This approach to sandwich ELISA allows the formation of the antibody-analyte sandwich complex in a single step, significantly reducing assay time. See the SimpleStep ELISA® protocol summary in the image section for further details. Our SimpleStep ELISA® technology provides several benefits:

- Single-wash protocol reduces assay time to 90 minutes or less
- High sensitivity, specificity and reproducibility from superior antibodies
- Fully validated in biological samples
- 96-wells plate breakable into 12 x 8 wells strips

A 384-well SimpleStep ELISA® microplate (**ab203359**) is available to use as an alternative to the 96-well microplate provided with SimpleStep ELISA® kits.

Notes

Abcam has not and does not intend to apply for the REACH Authorisation of customers' uses of products that contain European Authorisation list (Annex XIV) substances.

It is the responsibility of our customers to check the necessity of application of REACH Authorisation, and any other relevant authorisations, for their intended uses.

Platform

Pre-coated microplate (12 x 8 well strips)

Properties

Storage instructions

Store at +4°C. Please refer to protocols.

Components	1 x 96 tests
10X Mouse MASPIN Capture Antibody	1 x 600µl
10X Mouse MASPIN Detector Antibody	1 x 600µl
10X Wash Buffer PT (ab206977)	1 x 20ml
50X Cell Extraction Enhancer Solution (ab193971)	1 x 1ml
5X Cell Extraction Buffer PTR (ab193970)	1 x 10ml
Antibody Diluent 4BR	1 x 6ml
Mouse MASPIN Lyophilized Recombinant Protein	2 vials
Plate Seals	1 unit
Sample Diluent NS (ab193972)	1 x 50ml
SimpleStep Pre-Coated 96-Well Microplate (ab206978)	1 unit
Stop Solution	1 x 12ml
TMB Development Solution	1 x 12ml

Function

Tumor suppressor. It blocks the growth, invasion, and metastatic properties of mammary tumors. As it does not undergo the S (stressed) to R (relaxed) conformational transition characteristic of active serpins, it exhibits no serine protease inhibitory activity.

Tissue specificity

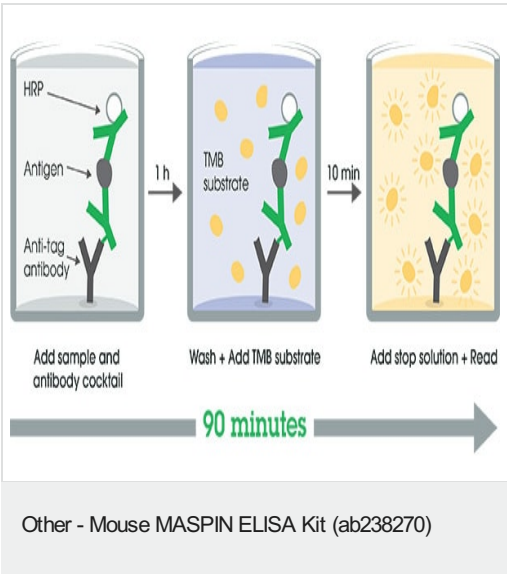
Normal mammary epithelial cells.

Sequence similarities

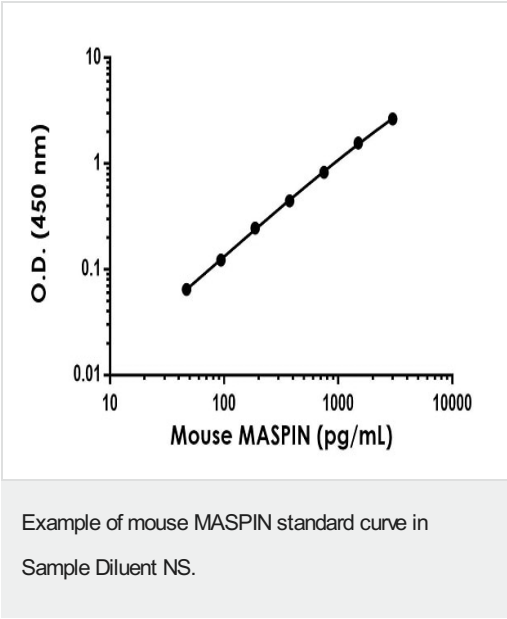
Belongs to the serpin family. Ov-serpin subfamily.

Cellular localization

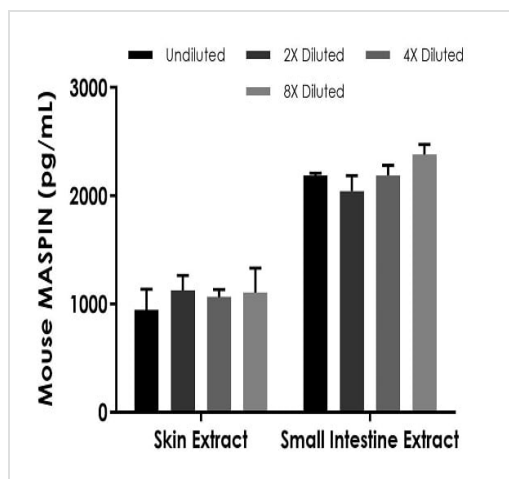
Secreted > extracellular space.



SimpleStep ELISA technology allows the formation of the antibody-antigen complex in one single step, reducing assay time to 90 minutes. Add samples or standards and antibody mix to wells all at once, incubate, wash, and add your final substrate. See protocol for a detailed step-by-step guide.



Background-subtracted data values (mean +/- SD) are graphed.



Interpolated concentrations of native MASPIN in mouse skin extract and mouse small intestine extract based on a 5 µg/mL and 1,500 µg/mL extract load, respectively.

The concentrations of MASPIN were measured in duplicate and interpolated from the MASPIN standard curve and corrected for sample dilution. The interpolated dilution factor corrected values are plotted (mean \pm SD, n=2). The mean MASPIN concentration was determined to be 1,060.3 pg/mL in mouse skin extract and 2,199.6 pg/mL in mouse small intestine extract.

Powered by
recombinant antibodies

Research with confidence
Consistent and reproducible results

Long-term and scalable supply
Recombinant technology

Success from the first experiment
Confirmed specificity

Ethical standards compliant
Animal-free production

Sandwich ELISA - Mouse MASPIN ELISA Kit
(ab238270)

To learn more about the advantages of recombinant antibodies see [here](#).

Please note: All products are "FOR RESEARCH USE ONLY. NOT FOR USE IN DIAGNOSTIC PROCEDURES"

Our Abpromise to you: Quality guaranteed and expert technical support

- Replacement or refund for products not performing as stated on the datasheet
- Valid for 12 months from date of delivery
- Response to your inquiry within 24 hours
- We provide support in Chinese, English, French, German, Japanese and Spanish
- Extensive multi-media technical resources to help you
- We investigate all quality concerns to ensure our products perform to the highest standards

If the product does not perform as described on this datasheet, we will offer a refund or replacement. For full details of the Abpromise,

please visit <https://www.abcam.com/abpromise> or contact our technical team.

Terms and conditions

- Guarantee only valid for products bought direct from Abcam or one of our authorized distributors