

## Product datasheet

### Mouse MCP-5 ELISA Kit ab246547

Recombinant SimpleStep ELISA<sup>®</sup>

[1 References](#) [4 Images](#)

#### Overview

**Product name** Mouse MCP-5 ELISA Kit

**Detection method** Colorimetric

**Precision**

Intra-assay

Sample	n	Mean	SD	CV%
serum	8			3.1%

Inter-assay

Sample	n	Mean	SD	CV%
serum	3			3.8%

**Sample type** Cell culture supernatant, Serum, Cit plasma

**Assay type** Sandwich (quantitative)

**Sensitivity** 6 pg/ml

**Range** 27.56 pg/ml - 1700 pg/ml

**Recovery**

Sample specific recovery

Sample type	Average %	Range
Cell culture supernatant	111	106% - 114%
Serum	116	113% - 119%
Cit plasma	103	100% - 106%

**Assay time** 1h 30m

**Assay duration** One step assay

**Species reactivity** **Reacts with:** Mouse

**Product overview** Mouse MCP-5 ELISA Kit (ab246547) is a single-wash 90 min sandwich ELISA designed for the quantitative measurement of MCP-5 protein in cell culture supernatant, cit plasma, and serum. It

uses our proprietary SimpleStep ELISA® technology. Quantitate Mouse MCP-5 with 6 pg/ml sensitivity.

SimpleStep ELISA® technology employs capture antibodies conjugated to an affinity tag that is recognized by the monoclonal antibody used to coat our SimpleStep ELISA® plates. This approach to sandwich ELISA allows the formation of the antibody-analyte sandwich complex in a single step, significantly reducing assay time. See the SimpleStep ELISA® protocol summary in the image section for further details. Our SimpleStep ELISA® technology provides several benefits:

- Single-wash protocol reduces assay time to 90 minutes or less
- High sensitivity, specificity and reproducibility from superior antibodies
- Fully validated in biological samples
- 96-wells plate breakable into 12 x 8 wells strips

A 384-well SimpleStep ELISA® microplate ([ab203359](#)) is available to use as an alternative to the 96-well microplate provided with SimpleStep ELISA® kits.

**Platform** Pre-coated microplate (12 x 8 well strips)

## Properties

**Storage instructions** Store at +4°C. Please refer to protocols.

Components	1 x 96 tests
10X Mouse MCP-5 Capture Antibody	1 x 600µl
10X Mouse MCP-5 Detector Antibody	1 x 600µl
10X Wash Buffer PT (ab206977)	1 x 20ml
Antibody Diluent 4BR	1 x 6ml
Mouse MCP-5 Lyophilized Recombinant Protein	2 vials
Plate Seals	1 unit
Sample Diluent NS (ab193972)	1 x 12ml
SimpleStep Pre-Coated 96-Well Microplate (ab206978)	1 unit
Stop Solution	1 x 12ml
TMB Development Solution	1 x 12ml

**Function** Chemotactic factor that attracts eosinophils, monocytes, and lymphocytes but not neutrophils. Potent monocyte active chemokine that signals through CCR2. Involved in allergic inflammation and the host response to pathogens and may play a pivotal role during early stages of allergic lung inflammation.

**Tissue specificity** Predominantly expressed in the lymph nodes and thymus. Also found in the salivary glands

containing lymph nodes, breast, heart, lung, brain, small intestine, kidney and colon.

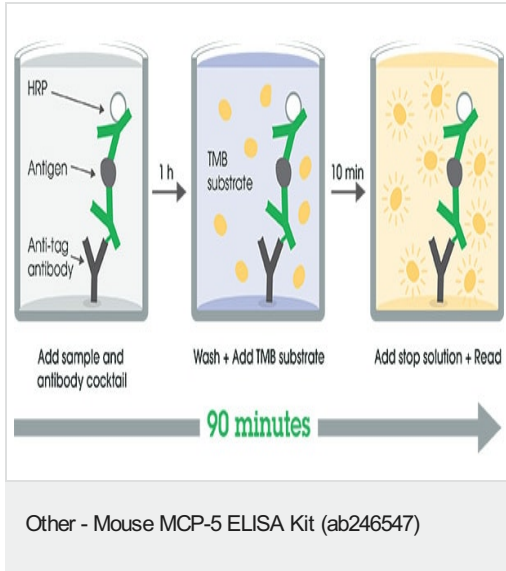
**Sequence similarities**

Belongs to the intercrine beta (chemokine CC) family.

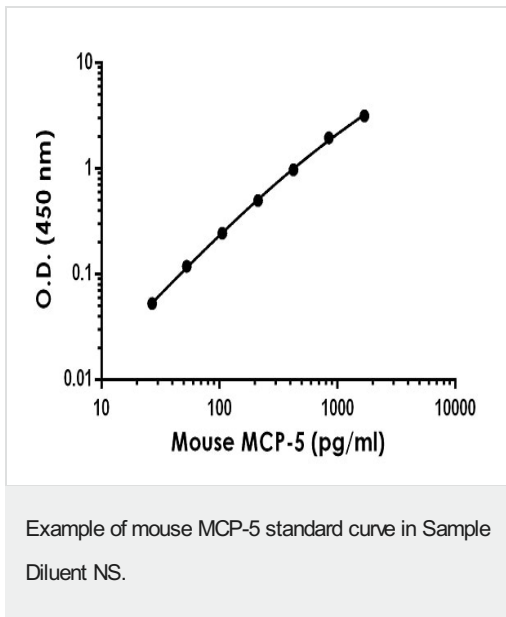
**Cellular localization**

Secreted.

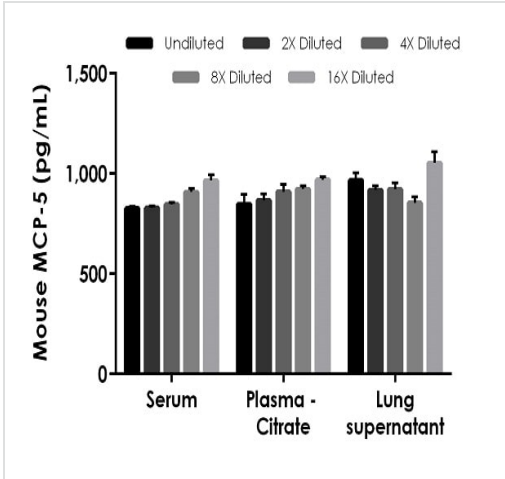
**Images**



SimpleStep ELISA technology allows the formation of the antibody-antigen complex in one single step, reducing assay time to 90 minutes. Add samples or standards and antibody mix to wells all at once, incubate, wash, and add your final substrate. See protocol for a detailed step-by-step guide.



The MCP-5 standard curve was prepared as described in Section 10. Raw data values are shown in the table. Background-subtracted data values (mean +/- SD) are graphed.



Interpolated concentrations of spiked MCP-5 in mouse serum, plasma (citrate) and lung supernatant samples.

The concentrations of MCP-5 were measured in duplicates and interpolated from the MCP-5 standard curves. Undiluted samples are as follows: serum 50%, plasma (citrate) 50%, and lung supernatant 37.5%. The interpolated dilution factor corrected values are plotted (mean +/- SD, n=2).

Powered by recombinant antibodies

- Research with confidence**  
Consistent and reproducible results
- Long-term and scalable supply**  
Recombinant technology
- Success from the first experiment**  
Confirmed specificity
- Ethical standards compliant**  
Animal-free production

Sandwich ELISA - Mouse MCP-5 ELISA Kit (ab246547)

To learn more about the advantages of recombinant antibodies see [here](#).

**Please note:** All products are "FOR RESEARCH USE ONLY. NOT FOR USE IN DIAGNOSTIC PROCEDURES"

**Our Abpromise to you: Quality guaranteed and expert technical support**

- Replacement or refund for products not performing as stated on the datasheet
- Valid for 12 months from date of delivery
- Response to your inquiry within 24 hours
  
- We provide support in Chinese, English, French, German, Japanese and Spanish
- Extensive multi-media technical resources to help you
- We investigate all quality concerns to ensure our products perform to the highest standards

If the product does not perform as described on this datasheet, we will offer a refund or replacement. For full details of the Abpromise, please visit <https://www.abcam.com/abpromise> or contact our technical team.

### **Terms and conditions**

---

- Guarantee only valid for products bought direct from Abcam or one of our authorized distributors