

Mouse MIP1b ELISA Kit ab215115

Recombinant SimpleStep ELISA<sup>®</sup>

7 Images

Overview

Product name Mouse MIP1b ELISA Kit

Detection method Colorimetric

Precision Intra-assay

Sample	n	Mean	SD	CV%
Overall	5			5%

Inter-assay

Sample	n	Mean	SD	CV%
Overall	3			2.2%

Sample type Cell culture supernatant, Serum, Hep Plasma, EDTA Plasma, Cit plasma

Assay type Sandwich (quantitative)

Sensitivity 2.1 pg/ml

Range 5 pg/ml - 350 pg/ml

Recovery Sample specific recovery

Sample type	Average %	Range
Cell culture supernatant	111	105% - 117%
Serum	101	94% - 110%
Hep Plasma	81	76% - 89%
EDTA Plasma	90	87% - 93%
Cit plasma	81	77% - 84%

Assay time 1h 30m

Assay duration One step assay

**Species reactivity****Reacts with:** Mouse**Does not react with:** Cow**Product overview**

Mouse MIP1b ELISA Kit (ab215115) is a single-wash 90 min sandwich ELISA designed for the quantitative measurement of MIP1b protein in cell culture supernatant, cit plasma, edta plasma, hep plasma, and serum. It uses our proprietary SimpleStep ELISA® technology. Quantitate Mouse MIP1b with 2.1 pg/ml sensitivity.

SimpleStep ELISA® technology employs capture antibodies conjugated to an affinity tag that is recognized by the monoclonal antibody used to coat our SimpleStep ELISA® plates. This approach to sandwich ELISA allows the formation of the antibody-analyte sandwich complex in a single step, significantly reducing assay time. See the SimpleStep ELISA® protocol summary in the image section for further details. Our SimpleStep ELISA® technology provides several benefits:

- Single-wash protocol reduces assay time to 90 minutes or less
- High sensitivity, specificity and reproducibility from superior antibodies
- Fully validated in biological samples
- 96-wells plate breakable into 12 x 8 wells strips

A 384-well SimpleStep ELISA® microplate (**ab203359**) is available to use as an alternative to the 96-well microplate provided with SimpleStep ELISA® kits.

**Notes**

MIP1b (CCL4) is a 7.8 kDa protein member of the CC subfamily of chemokines. MIP1b is induced in a variety of cells, including mast cells, CD8+ T cells, intra-epithelial gamma-delta T cells, endothelial cells, and macrophages. MIP1b is involved in the recruitment of T cells to lymph nodes and can enhance macrophage effector functions.

**Platform**

Pre-coated microplate (12 x 8 well strips)

**Properties****Storage instructions**

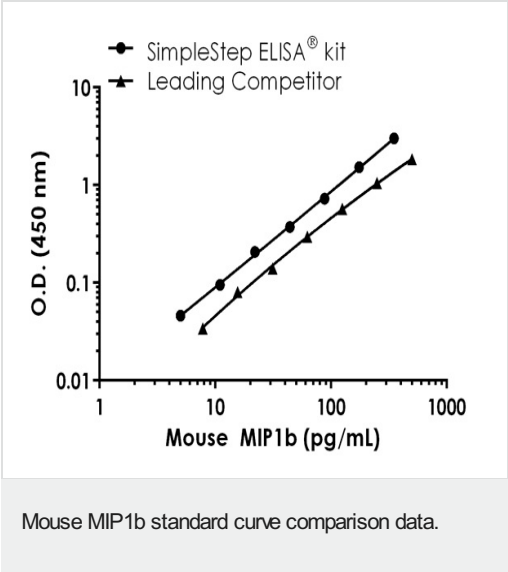
Store at +4°C. Please refer to protocols.

Components	1 x 96 tests
10X Wash Buffer PT (ab206977)	1 x 20ml
Antibody Diluent 5BI	1 x 6ml
10X Mouse MIP1b Capture Antibody	1 x 600µl
10X Mouse MIP1b Detector Antibody	1 x 600µl
Mouse MIP1b Lyophilized Recombinant Protein	2 vials
Plate Seals	1 unit
Sample Diluent NS (ab193972)	1 x 50ml
SimpleStep Pre-Coated 96-Well Microplate (ab206978)	1 unit

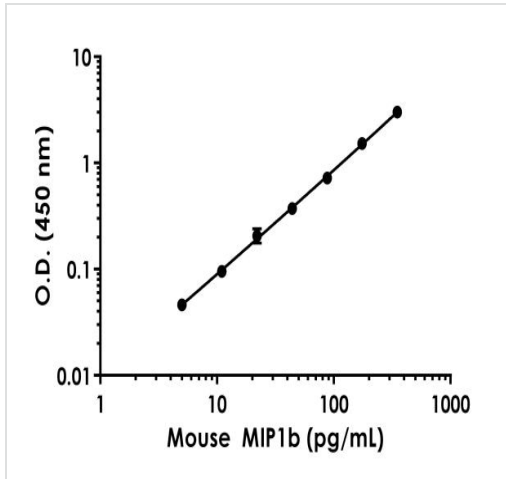
Components	1 x 96 tests
Stop Solution	1 x 12ml
TMB Development Solution	1 x 12ml

Function	Monokine with inflammatory and chemokinetic properties. Binds to CCR5. One of the major HIV-suppressive factors produced by CD8+ T-cells. Recombinant MIP-1-beta induces a dose-dependent inhibition of different strains of HIV-1, HIV-2, and simian immunodeficiency virus (SIV). The processed form MIP-1-beta(3-69) retains the abilities to induce down-modulation of surface expression of the chemokine receptor CCR5 and to inhibit the CCR5-mediated entry of HIV-1 in T-cells. MIP-1-beta(3-69) is also a ligand for CCR1 and CCR2 isoform B.
Sequence similarities	Belongs to the intercrine beta (chemokine CC) family.
Post-translational modifications	N-terminal processed form MIP-1-beta(3-69) is produced by proteolytic cleavage after secretion from peripheral blood lymphocytes.
Cellular localization	Secreted.

Images

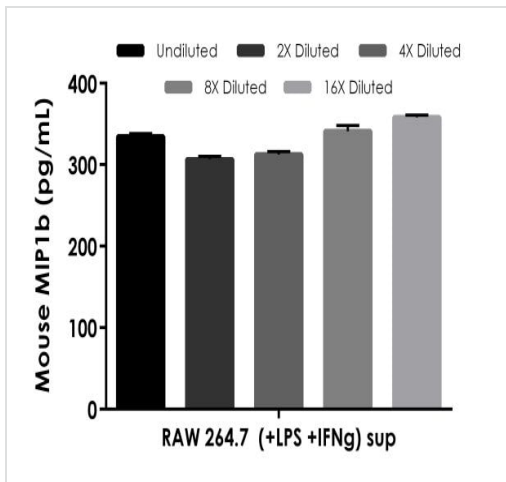


Standard curve comparison between mouse MIP1b SimpleStep ELISA<sup>®</sup> kit and traditional ELISA kit from leading competitor. SimpleStep ELISA kit shows a 0.5-fold increase in sensitivity.



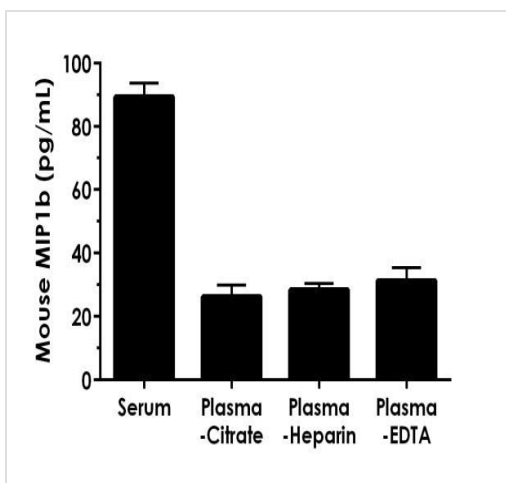
Background-subtracted data values (mean  $\pm$  SD) are graphed.

Example of mouse MIP1b standard curve in Sample Diluent NS.



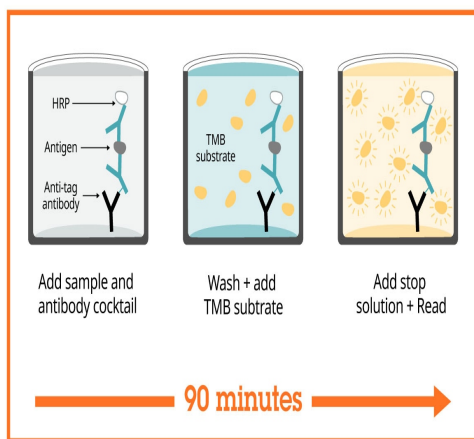
The concentrations of MIP1b were measured in duplicates, interpolated from the MIP1b standard curves and corrected for sample dilution. Undiluted samples are as follows: RAW264.7 (+LPS, +IFNg) supernatant 75%. The interpolated dilution factor corrected values are plotted (mean  $\pm$  SD,  $n=2$ ). The mean MIP1b concentration was determined to be 441 pg/mL.

Interpolated concentrations of native MIP1b in cell culture supernatant sample.



Interpolated dilution factor corrected values are plotted (mean  $\pm$  SD,  $n=2$ ). The mean MIP1b concentration was determined to be 89 pg/mL in serum, 26 pg/mL in plasma (citrate), 28 pg/mL in plasma (heparin), 31 pg/mL in plasma (EDTA).

Native pooled mouse serum and plasma signal was measured in duplicate.



Sandwich ELISA - Mouse MIP1b ELISA Kit  
(ab215115)

SimpleStep ELISA technology allows the formation of the antibody-antigen complex in one single step, reducing assay time to 90 minutes. Add samples or standards and antibody mix to wells all at once, incubate, wash, and add your final substrate. See protocol for a detailed step-by-step guide.

Powered by  
recombinant antibodies



**Research with confidence**  
Consistent and reproducible results



**Long-term and scalable supply**  
Recombinant technology



**Success from the first experiment**  
Confirmed specificity



**Ethical standards compliant**  
Animal-free production

Sandwich ELISA - Mouse MIP1b ELISA Kit  
(ab215115)

To learn more about the advantages of recombinant antibodies see [here](#).

**Get more done with SimpleStep ELISA**



**Easy to use**  
Single-wash 90-minute protocol



**Flexible**  
Matched antibody pairs available



**Precision antibodies**  
High sensitivity, specificity and reproducibility



**Scalable**  
Now in 10-pack and 384-well formats

Sandwich ELISA - Mouse MIP1b ELISA Kit  
(ab215115)

To learn more about the advantages of SimpleStep ELISA<sup>®</sup> kits see [here](#).

**Please note:** All products are "FOR RESEARCH USE ONLY. NOT FOR USE IN DIAGNOSTIC PROCEDURES"

### **Our Abpromise to you: Quality guaranteed and expert technical support**

---

- Replacement or refund for products not performing as stated on the datasheet
- Valid for 12 months from date of delivery
- Response to your inquiry within 24 hours
  
- We provide support in Chinese, English, French, German, Japanese and Spanish
- Extensive multi-media technical resources to help you
- We investigate all quality concerns to ensure our products perform to the highest standards

If the product does not perform as described on this datasheet, we will offer a refund or replacement. For full details of the Abpromise, please visit <https://www.abcam.com/abpromise> or contact our technical team.

### **Terms and conditions**

---

- Guarantee only valid for products bought direct from Abcam or one of our authorized distributors