

Mouse Nestin ELISA Kit ab223859

Recombinant SimpleStep ELISA®

4 Images

Overview

Product name	Mouse Nestin ELISA Kit				
Detection method	Colorimetric				
Precision	Intra-assay				
	Sample	n	Mean	SD	CV%
	Cell Extract	5			3.4%
	Inter-assay				
	Sample	n	Mean	SD	CV%
	Cell Extract	3			14.1%
Sample type	Cell culture extracts				
Assay type	Sandwich (quantitative)				
Sensitivity	7.6 pg/ml				
Range	15.6 pg/ml - 1000 pg/ml				
Recovery	Sample specific recovery				
	Sample type	Average %		Range	
	Cell culture extracts	107		103% - 112%	
Assay time	1h 30m				
Assay duration	One step assay				
Species reactivity	Reacts with: Mouse				
Product overview	Mouse Nestin ELISA Kit (ab223859) is a single-wash 90 min sandwich ELISA designed for the				

SimpleStep ELISA® technology employs capture antibodies conjugated to an affinity tag that is recognized by the monoclonal antibody used to coat our SimpleStep ELISA® plates. This

approach to sandwich ELISA allows the formation of the antibody-analyte sandwich complex in a single step, significantly reducing assay time. See the SimpleStep ELISA® protocol summary in the image section for further details. Our SimpleStep ELISA® technology provides several benefits:

- Single-wash protocol reduces assay time to 90 minutes or less
- High sensitivity, specificity and reproducibility from superior antibodies
- Fully validated in biological samples
- 96-wells plate breakable into 12 x 8 wells strips

A 384-well SimpleStep ELISA® microplate (**ab203359**) is available to use as an alternative to the 96-well microplate provided with SimpleStep ELISA® kits.

Notes

Nestin is an intermediate filament protein and is a marker for neural stem cells. Nestin is required for brain and eye development. Nestin expression generally doesn't persist into adult hood, with the exception of the neuronal precursor cells of the subgranular zone. After cells have differentiated Nestin is downregulated and is replaced by tissue-specific intermediate filament proteins.

Abcam has not and does not intend to apply for the REACH Authorisation of customers' uses of products that contain European Authorisation list (Annex XIV) substances. It is the responsibility of our customers to check the necessity of application of REACH Authorisation, and any other relevant authorisations, for their intended uses.

Platform

Pre-coated microplate (12 x 8 well strips)

Properties

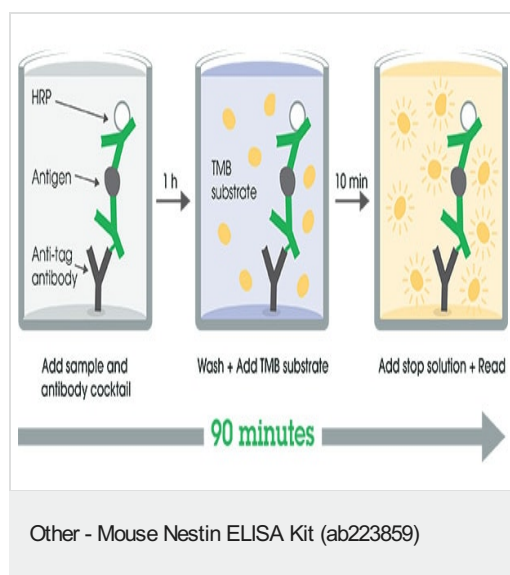
Storage instructions Store at +4°C. Please refer to protocols.

Components	1 x 96 tests
10X Mouse Nestin Capture Antibody	1 x 600µl
10X Mouse Nestin Detector Antibody	1 x 600µl
10X Wash Buffer PT (ab206977)	1 x 20ml
50X Cell Extraction Enhancer Solution (ab193971)	1 x 1ml
5X Cell Extraction Buffer PTR (ab193970)	1 x 10ml
Antibody Diluent CPR2	1 x 6ml
Mouse Nestin Lyophilized Recombinant Protein	2 vials
Plate Seals	1 unit
Sample Diluent NS (ab193972)	1 x 12ml
SimpleStep Pre-Coated 96-Well Microplate (ab206978)	1 unit

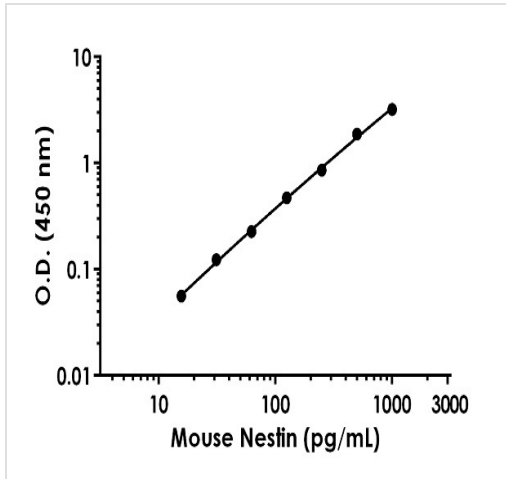
Components	1 x 96 tests
Stop Solution	1 x 12ml
TMB Development Solution	1 x 12ml

Function	Required for brain and eye development. Promotes the disassembly of phosphorylated vimentin intermediate filaments (IF) during mitosis and may play a role in the trafficking and distribution of IF proteins and other cellular factors to daughter cells during progenitor cell division. Required for survival, renewal and mitogen-stimulated proliferation of neural progenitor cells.
Tissue specificity	CNS stem cells.
Sequence similarities	Belongs to the intermediate filament family.
Developmental stage	Upon terminal neural differentiation, nestin is down-regulated and replaced by neurofilaments.
Post-translational modifications	Constitutively phosphorylated. This increases during mitosis when the cytoplasmic intermediate filament network is reorganized.

Images

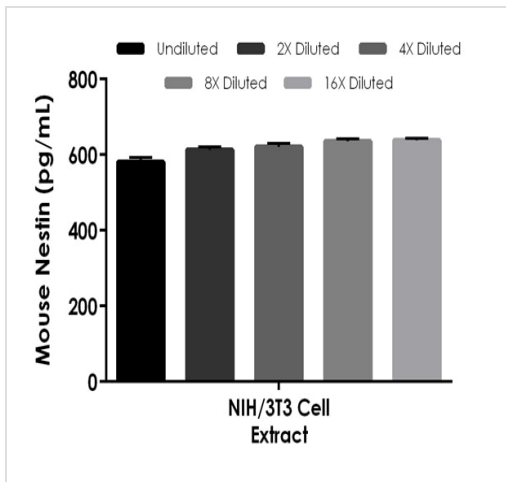


SimpleStep ELISA technology allows the formation of the antibody-antigen complex in one single step, reducing assay time to 90 minutes. Add samples or standards and antibody mix to wells all at once, incubate, wash, and add your final substrate. See protocol for a detailed step-by-step guide.



Background-subtracted data values (mean \pm SD) are graphed.

Example of MouseNestin standard curve in 1X Cell Extraction Buffer PTR



The concentrations of Nestin were measured in duplicate and interpolated from the Nestin standard curve and corrected for sample dilution. The interpolated dilution factor corrected values are plotted (mean \pm SD, $n=2$). The mean Nestin concentration was determined to be 678 pg/mL in NIH/3T3 Cell extract.

Interpolated concentrations of native Nestin in Mouse NIH/3T3 cell extract sample and sample based on a 62.5 μ g/mL extract load

Powered by
recombinant antibodies

Research with confidence
Consistent and reproducible results

Long-term and scalable supply
Recombinant technology

Success from the first experiment
Confirmed specificity

Ethical standards compliant
Animal-free production

To learn more about the advantages of recombinant antibodies see [here](#).

Sandwich ELISA - Mouse Nestin ELISA Kit
(ab223859)

Please note: All products are "FOR RESEARCH USE ONLY. NOT FOR USE IN DIAGNOSTIC PROCEDURES"

Our Abpromise to you: Quality guaranteed and expert technical support

- Replacement or refund for products not performing as stated on the datasheet
- Valid for 12 months from date of delivery
- Response to your inquiry within 24 hours
- We provide support in Chinese, English, French, German, Japanese and Spanish
- Extensive multi-media technical resources to help you
- We investigate all quality concerns to ensure our products perform to the highest standards

If the product does not perform as described on this datasheet, we will offer a refund or replacement. For full details of the Abpromise, please visit <https://www.abcam.com/abpromise> or contact our technical team.

Terms and conditions

- Guarantee only valid for products bought direct from Abcam or one of our authorized distributors