

Mouse Nidogen-1 ELISA Kit (Entactin) ab270203

Recombinant SimpleStep ELISA[®]

6 Images

Overview

Product name Mouse Nidogen-1 ELISA Kit (Entactin)

Detection method Colorimetric

Precision Intra-assay

Sample	n	Mean	SD	CV%
Serum	8			5.4%

Inter-assay

Sample	n	Mean	SD	CV%
Serum	3			6.5%

Sample type Cell culture supernatant, Serum, Cell culture media, Hep Plasma, EDTA Plasma, Cit plasma

Assay type Sandwich (quantitative)

Sensitivity 44.15 pg/ml

Range 78.13 pg/ml - 5000 pg/ml

Recovery Sample specific recovery

Sample type	Average %	Range
Cell culture supernatant	107	105% - 110%
Serum	89	81% - 103%
Cell culture media	97	96% - 98%
Hep Plasma	92	87% - 100%
EDTA Plasma	93	89% - 97%
Cit plasma	85	83% - 87%

Assay time	1h 30m
Assay duration	One step assay
Species reactivity	Reacts with: Mouse
Product overview	<p>Mouse Nidogen-1 ELISA Kit (Entactin) (ab270203) is a single-wash 90 min sandwich ELISA designed for the quantitative measurement of Nidogen-1 (Entactin) protein in cell culture media, cell culture supernatant, edta plasma, serum, cit plasma, and hep plasma. It uses our proprietary SimpleStep ELISA® technology. Quantitate Mouse Nidogen-1 (Entactin) with 44.15 pg/ml sensitivity.</p> <p>SimpleStep ELISA® technology employs capture antibodies conjugated to an affinity tag that is recognized by the monoclonal antibody used to coat our SimpleStep ELISA® plates. This approach to sandwich ELISA allows the formation of the antibody-analyte sandwich complex in a single step, significantly reducing assay time. See the SimpleStep ELISA® protocol summary in the image section for further details. Our SimpleStep ELISA® technology provides several benefits:</p> <ul style="list-style-type: none"> - Single-wash protocol reduces assay time to 90 minutes or less - High sensitivity, specificity and reproducibility from superior antibodies - Fully validated in biological samples - 96-wells plate breakable into 12 x 8 wells strips <p>A 384-well SimpleStep ELISA® microplate (ab203359) is available to use as an alternative to the 96-well microplate provided with SimpleStep ELISA® kits.</p>
Notes	<p>Nidogen-1 is a glycoprotein found in the basement membrane. Nidogen-1 is a part of a network of proteins within the cell and is thought to be involved in cell-extracellular matrix interactions. Nidogen-1 is a ubiquitous and abundant protein, in contrast to nidogen-2 which has distinct expression patterns. Mice lacking both nidogens die shortly after birth due to lung and heart problems.</p>
Platform	Pre-coated microplate (12 x 8 well strips)

Properties

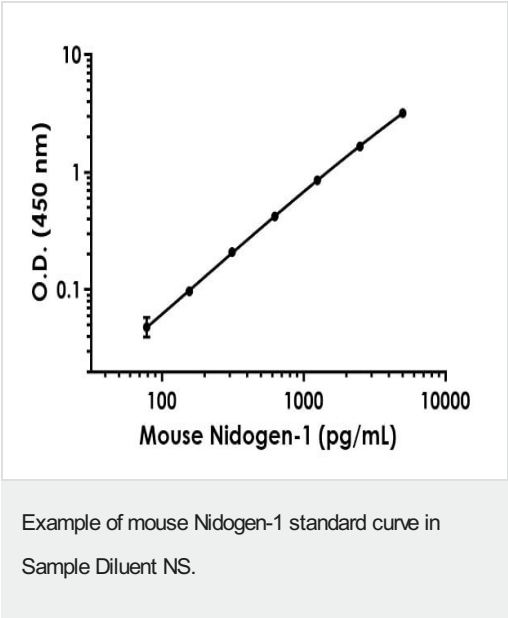
Storage instructions Store at +4°C. Please refer to protocols.

Components	1 x 96 tests
10X Mouse Nidogen-1 (Entactin) Capture Antibody	1 x 600µl
10X Mouse Nidogen-1 (Entactin) Detector Antibody	1 x 600µl
10X Wash Buffer PT (ab206977)	1 x 20ml
Antibody Diluent 4BR	1 x 6ml
Mouse Nidogen-1 (Entactin) Lyophilized Recombinant Protein	2 vials
Plate Seals	1 unit

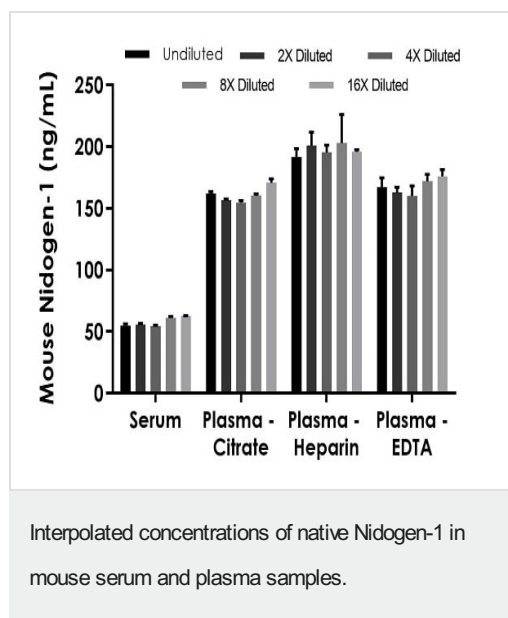
Components	1 x 96 tests
Sample Diluent NS (ab193972)	1 x 50ml
SimpleStep Pre-Coated 96-Well Microplate (ab206978)	1 unit
Stop Solution	1 x 12ml
TMB Development Solution	1 x 12ml

Function	Sulfated glycoprotein widely distributed in basement membranes and tightly associated with laminin. Also binds to collagen IV and perlecan. It probably has a role in cell-extracellular matrix interactions.
Sequence similarities	Contains 6 EGF-like domains. Contains 4 LDL-receptor class B repeats. Contains 1 NIDO domain. Contains 1 nidogen G2 beta-barrel domain. Contains 1 thyroglobulin type-1 domain.
Post-translational modifications	N- and O-glycosylated.
Cellular localization	Secreted > extracellular space > extracellular matrix > basement membrane.

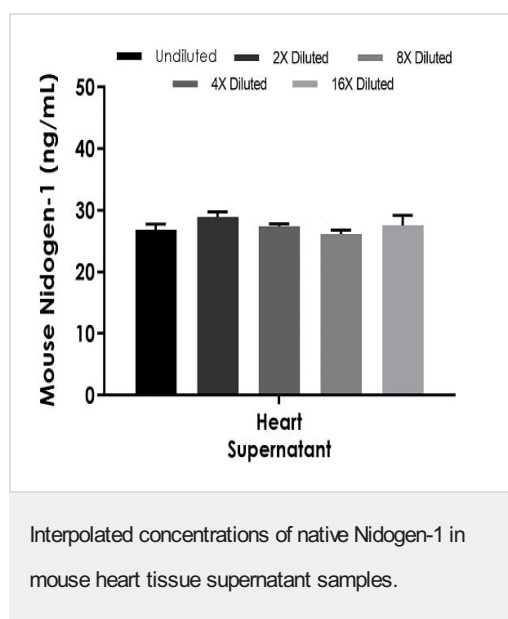
Images



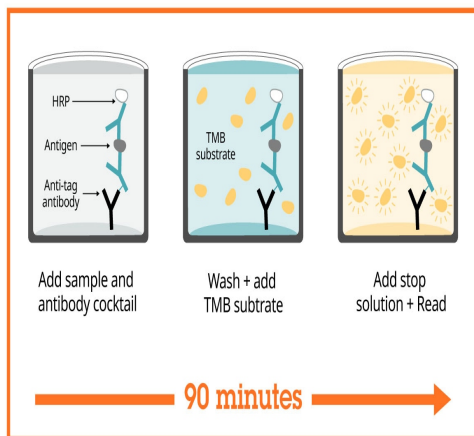
The Nidogen-1 standard curve was prepared as described in Section 10. Raw data values are shown in the table. Background-subtracted data values (mean +/- SD) are graphed.



The concentrations of Nidogen-1 were measured in duplicates, interpolated from the Nidogen-1 standard curves and corrected for sample dilution. Undiluted samples are as follows: serum 5%, plasma (citrate) 2.5%, plasma (heparin) 2.5%, and plasma (EDTA) 2.5%. The interpolated dilution factor corrected values are plotted (mean \pm SD, n=2). The mean Nidogen-1 concentration was determined to be 59.56 ng/mL in serum, 165.19 ng/mL in plasma (citrate), 199.81 ng/ml in plasma (heparin), and 167.56 ng/ml in plasma (EDTA).



The concentrations of Nidogen-1 were measured in duplicates, interpolated from the Nidogen-1 standard curves and corrected for sample dilution. Undiluted samples are as follows: heart supernatant 12.5%. The interpolated dilution factor corrected values are plotted (mean \pm SD, n=2). The mean Nidogen-1 concentration was determined to be 27.66 ng/mL in heart supernatant.



Sandwich ELISA - Mouse Nidogen-1 ELISA Kit
(Entactin) (ab270203)

SimpleStep ELISA technology allows the formation of the antibody-antigen complex in one single step, reducing assay time to 90 minutes. Add samples or standards and antibody mix to wells all at once, incubate, wash, and add your final substrate. See protocol for a detailed step-by-step guide.

Powered by
recombinant antibodies



Research with confidence
Consistent and reproducible results



Long-term and scalable supply
Recombinant technology



Success from the first experiment
Confirmed specificity



Ethical standards compliant
Animal-free production

Sandwich ELISA - Mouse Nidogen-1 ELISA Kit
(Entactin) (ab270203)

To learn more about the advantages of recombinant antibodies see [here](#).

**Get more done with
SimpleStep ELISA**



Easy to use

Single-wash 90-minute
protocol



Flexible

Matched antibody pairs
available



Precision antibodies

High sensitivity, specificity
and reproducibility



Scalable

Now in 10-pack and
384-well formats

Sandwich ELISA - Mouse Nidogen-1 ELISA Kit
(Entactin) (ab270203)

To learn more about the advantages of SimpleStep ELISA® kits
see [here](#).

Please note: All products are "FOR RESEARCH USE ONLY. NOT FOR USE IN DIAGNOSTIC PROCEDURES"

Our Abpromise to you: Quality guaranteed and expert technical support

- Replacement or refund for products not performing as stated on the datasheet
- Valid for 12 months from date of delivery
- Response to your inquiry within 24 hours
- We provide support in Chinese, English, French, German, Japanese and Spanish
- Extensive multi-media technical resources to help you
- We investigate all quality concerns to ensure our products perform to the highest standards

If the product does not perform as described on this datasheet, we will offer a refund or replacement. For full details of the Abpromise, please visit <https://www.abcam.com/abpromise> or contact our technical team.

Terms and conditions

- Guarantee only valid for products bought direct from Abcam or one of our authorized distributors