

Product datasheet

Mouse Oncostatin M ELISA Kit (OSM) ab263891

Recombinant SimpleStep ELISA[®]

5 Images

Overview

Product name Mouse Oncostatin M ELISA Kit (OSM)

Detection method Colorimetric

Precision Intra-assay

Sample	n	Mean	SD	CV%
Serum	8			6.5%

Inter-assay

Sample	n	Mean	SD	CV%
Serum	3			3.7%

Sample type Cell culture supernatant, Serum, Hep Plasma, EDTA Plasma, Cit plasma

Assay type Sandwich (quantitative)

Sensitivity 4.36 pg/ml

Range 11.719 pg/ml - 750 pg/ml

Recovery Sample specific recovery

Sample type	Average %	Range
Cell culture supernatant	99	93% - 101%
Serum	87	86% - 88%
Hep Plasma	87	83% - 94%
EDTA Plasma	87	85% - 89%
Cit plasma	86	79% - 91%

Assay time 1h 30m

Assay duration One step assay

Species reactivity**Reacts with:** Mouse**Product overview**

Mouse Oncostatin M ELISA Kit (OSM) (ab263891) is a single-wash 90 min sandwich ELISA designed for the quantitative measurement of Oncostatin M (OSM) protein in cell culture supernatant, cit plasma, edta plasma, hep plasma, and serum. It uses our proprietary SimpleStep ELISA® technology. Quantitate Mouse Oncostatin M (OSM) with 4.36 pg/ml sensitivity.

SimpleStep ELISA® technology employs capture antibodies conjugated to an affinity tag that is recognized by the monoclonal antibody used to coat our SimpleStep ELISA® plates. This approach to sandwich ELISA allows the formation of the antibody-analyte sandwich complex in a single step, significantly reducing assay time. See the SimpleStep ELISA® protocol summary in the image section for further details. Our SimpleStep ELISA® technology provides several benefits:

- Single-wash protocol reduces assay time to 90 minutes or less
- High sensitivity, specificity and reproducibility from superior antibodies
- Fully validated in biological samples
- 96-wells plate breakable into 12 x 8 wells strips

A 384-well SimpleStep ELISA® microplate ([ab203359](#)) is available to use as an alternative to the 96-well microplate provided with SimpleStep ELISA® kits.

Notes

Oncostatin M (OSM) is a growth regulator. Oncostatin M inhibits the proliferation of a number of tumor cell lines. It regulates cytokine production, including IL-6, G-CSF and GM-CSF from endothelial cells. Oncostatin M uses only type II OSM receptor (heterodimers composed of OSMR and IL6ST). It is involved in the maturation of fetal hepatocytes, thereby promoting liver development and regeneration. Rat Oncostatin M is 73% identical to mouse Oncostatin M.

Platform

Pre-coated microplate (12 x 8 well strips)

Properties**Storage instructions**

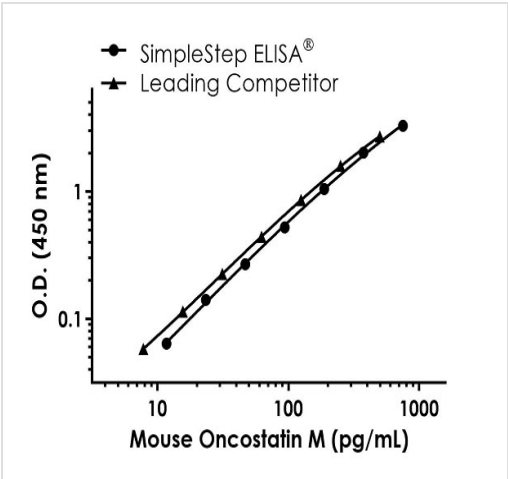
Store at +4°C. Please refer to protocols.

Components	1 x 96 tests
10X Mouse Oncostatin M (OSM) Capture Antibody	1 x 600µl
10X Mouse Oncostatin M (OSM) Detector Antibody	1 x 600µl
10X Wash Buffer PT (ab206977)	1 x 20ml
Antibody Diluent 5BR	1 x 6ml
Mouse Oncostatin M (OSM) Lyophilized Recombinant Protein	2 vials
Plate Seals	1 unit
Sample Diluent NS (ab193972)	1 x 50ml
SimpleStep Pre-Coated 96-Well Microplate (ab206978)	1 unit

Components	1 x 96 tests
Stop Solution	1 x 12ml
TMB Development Solution	1 x 12ml

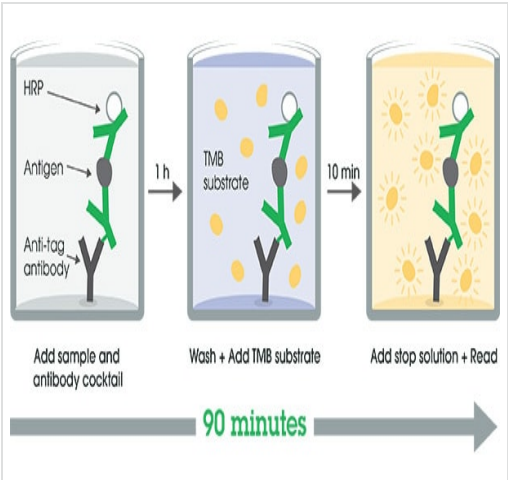
Function	Growth regulator. Inhibits the proliferation of a number of tumor cell lines. Stimulates proliferation of AIDS-KS cells. It regulates cytokine production, including IL-6, G-CSF and GM-CSF from endothelial cells. Uses both type I OSM receptor (heterodimers composed of LIPR and IL6ST) and type II OSM receptor (heterodimers composed of OSMR and IL6ST).
Sequence similarities	Belongs to the LIF/OSM family.
Cellular localization	Secreted.

Images



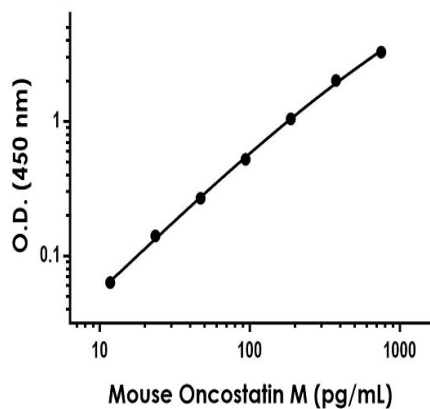
Mouse Oncostatin M standard curve comparison

Standard Curve comparison between Mouse Oncostatin M SimpleStep ELISA kit and traditional ELISA kit from leading competitor. SimpleStep ELISA kit shows comparable sensitivity.



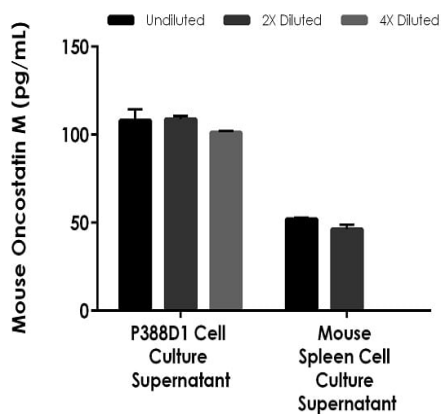
SimpleStep ELISA Protocol Diagram

SimpleStep ELISA technology allows the formation of the antibody-antigen complex in one single step, reducing assay time to 90 minutes. Add samples or standards and antibody mix to wells all at once, incubate, wash, and add your final substrate. See protocol for a detailed step-by-step guide.



Example of mouse Oncostatin M standard curve in Sample Diluent NS.

The Oncostatin M standard curve was prepared as described in Section 10. Raw data values are shown in the table. Background-subtracted data values (mean \pm SD) are graphed.



Interpolated concentrations of native Oncostatin M in mouse P388D1 cell culture supernatant and mouse spleen cell culture supernatant samples.

The concentrations of Oncostatin M were measured in duplicates, interpolated from the Oncostatin M standard curves and corrected for sample dilution. Undiluted samples are as follows: P388D1 cell culture supernatant: 50% and spleen cell culture supernatant: 50%. The interpolated dilution factor corrected values are plotted (mean \pm SD, $n=2$). The mean Oncostatin M concentration was determined to be 106 pg/mL in neat P388D1 cell culture supernatant and 49 pg/mL in neat spleen cell culture supernatant.

Powered by
recombinant antibodies



Research with confidence
Consistent and reproducible results



Long-term and scalable supply
Recombinant technology



Success from the first experiment
Confirmed specificity



Ethical standards compliant
Animal-free production

Sandwich ELISA - Mouse Oncostatin M ELISA Kit
(OSM) (ab263891)

To learn more about the advantages of recombinant antibodies see [here](#).

Please note: All products are "FOR RESEARCH USE ONLY. NOT FOR USE IN DIAGNOSTIC PROCEDURES"

Our Abpromise to you: Quality guaranteed and expert technical support

- Replacement or refund for products not performing as stated on the datasheet
- Valid for 12 months from date of delivery
- Response to your inquiry within 24 hours
- We provide support in Chinese, English, French, German, Japanese and Spanish
- Extensive multi-media technical resources to help you
- We investigate all quality concerns to ensure our products perform to the highest standards

If the product does not perform as described on this datasheet, we will offer a refund or replacement. For full details of the Abpromise, please visit <https://www.abcam.com/abpromise> or contact our technical team.

Terms and conditions

- Guarantee only valid for products bought direct from Abcam or one of our authorized distributors