

### Mouse Pin1 ELISA Kit ab209879

Recombinant SimpleStep ELISA®

[6 Images](#)

#### Overview

**Product name** Mouse Pin1 ELISA Kit

**Detection method** Colorimetric

**Precision**

Intra-assay

Sample	n	Mean	SD	CV%
cell extract	8			3.7%

Inter-assay

Sample	n	Mean	SD	CV%
cell extract	3			3.5%

**Sample type** Cell culture extracts, Tissue Extracts

**Assay type** Sandwich (quantitative)

**Sensitivity** 11.2 pg/ml

**Range** 46.9 pg/ml - 3000 pg/ml

**Recovery**

Sample specific recovery

Sample type	Average %	Range
Cell culture extracts	105	94% - 111%

**Assay time** 1h 30m

**Assay duration** One step assay

**Species reactivity** **Reacts with:** Mouse

**Product overview**

Mouse Pin1 ELISA Kit (ab209879) is a single-wash 90 min sandwich ELISA designed for the quantitative measurement of Pin1 protein in cell culture extracts and tissue extracts. It uses our proprietary SimpleStep ELISA® technology. Quantitate Mouse Pin1 with 11.2 pg/ml sensitivity.

SimpleStep ELISA® technology employs capture antibodies conjugated to an affinity tag that is recognized by the monoclonal antibody used to coat our SimpleStep ELISA® plates. This

approach to sandwich ELISA allows the formation of the antibody-analyte sandwich complex in a single step, significantly reducing assay time. See the SimpleStep ELISA® protocol summary in the image section for further details. Our SimpleStep ELISA® technology provides several benefits:

- Single-wash protocol reduces assay time to 90 minutes or less
- High sensitivity, specificity and reproducibility from superior antibodies
- Fully validated in biological samples
- 96-wells plate breakable into 12 x 8 wells strips

A 384-well SimpleStep ELISA® microplate (**ab203359**) is available to use as an alternative to the 96-well microplate provided with SimpleStep ELISA® kits.

## Notes

Pin1 is a peptidyl-prolyl cis/trans isomerase, isomerizing specific phosphorylated Ser/Thr-Pro motifs present in some proteins. Pin1 is involved in the regulation of mitosis, and it can transactivate multiple oncogenes and induce centrosome amplification, chromosome instability, and cell transformation. Upregulation of Pin1 is associated with certain cancers, while downregulation of Pin1 has been implicated in Alzheimer's disease.

Abcam has not and does not intend to apply for the REACH Authorisation of customers' uses of products that contain European Authorisation list (Annex XIV) substances. It is the responsibility of our customers to check the necessity of application of REACH Authorisation, and any other relevant authorisations, for their intended uses.

## Platform

Microplate (12 x 8 well strips)

## Properties

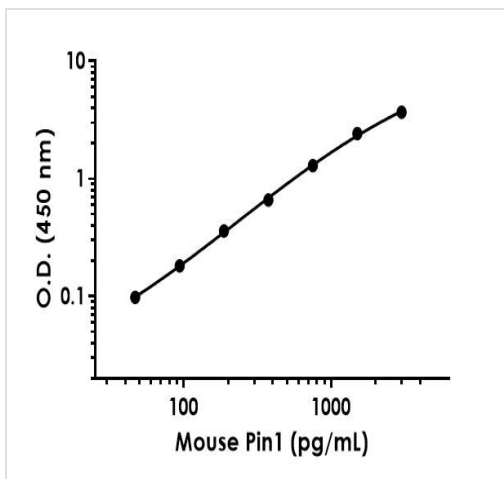
**Storage instructions** Store at +4°C. Please refer to protocols.

Components	1 x 96 tests
10X Mouse Pin1 Capture Antibody	1 x 600µl
10X Mouse Pin1 Detector Antibody	1 x 600µl
10X Wash Buffer PT (ab206977)	1 x 20ml
50X Cell Extraction Enhancer Solution (ab193971)	1 x 1ml
5X Cell Extraction Buffer PTR (ab193970)	1 x 10ml
Antibody Diluent 4BR	1 x 6ml
Mouse Pin1 Lyophilized Recombinant Protein	2 vials
Plate Seals	1 unit
Sample Diluent NS (ab193972)	1 x 12ml
SimpleStep Pre-Coated 96-Well Microplate (ab206978)	1 unit

Components	1 x 96 tests
Stop Solution	1 x 12ml
TMB Development Solution	1 x 12ml

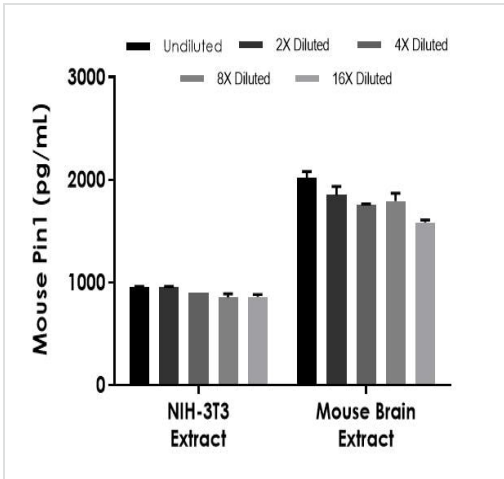
<b>Function</b>	Essential PPlase that regulates mitosis presumably by interacting with NIMA and attenuating its mitosis-promoting activity. Displays a preference for an acidic residue N-terminal to the isomerized proline bond. Catalyzing pSer/Thr-Pro cis/trans isomerizations.
<b>Sequence similarities</b>	Contains 1 PpiC domain. Contains 1 WW domain.
<b>Domain</b>	The WW domain is required for the interaction with STIL and KIF20B.
<b>Post-translational modifications</b>	Phosphorylated upon DNA damage, probably by ATM or ATR.
<b>Cellular localization</b>	Nucleus.

## Images



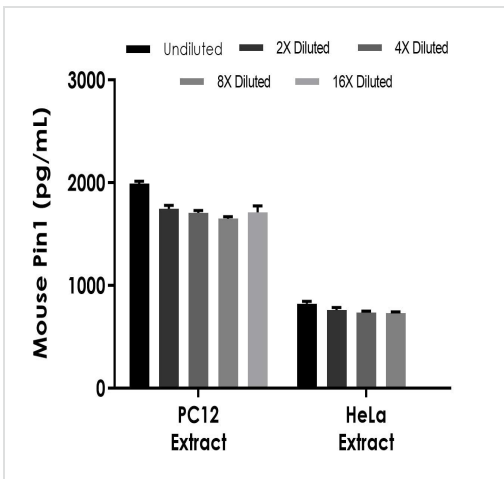
Example of mouse Pin1 standard curve in 1X Cell Extraction Buffer PTR.

The Pin1 standard curve was prepared as described in Section 10. Raw data values are shown in the table. Background-subtracted data values (mean +/- SD) are graphed.



Interpolated concentrations of native Pin1 in mouse NIH-3T3 extract based on a 35 µg/mL extract load and mouse brain extract based on a 50 µg/mL extract load.

The concentrations of Pin1 were measured in duplicate and interpolated from the Pin1 standard curve and corrected for sample dilution. The interpolated dilution factor corrected values are plotted (mean +/- SD, n=2). The mean Pin1 concentration was determined to be 906 pg/mL in NIH-3T3 extract and 1,803 pg/mL in mouse brain extract.



This assay detects human and rat PP2A-alpha.

The concentrations of PP2A-alpha in PC12 and HeLa extract were measured in duplicate, interpolated from the mouse PP2A-alpha standard curves and corrected for sample dilution. Undiluted samples are PC12 extract based on a 25 µg/mL extract load and HeLa extract based on a 12.5 µg/mL extract load. The interpolated dilution factor corrected values are plotted (mean +/- SD, n=2). The mean PP2A-alpha concentration was determined to be 1,763 pg/mL in PC12 extract and 763 pg/mL in HeLa extract.

Powered by recombinant antibodies



**Research with confidence**  
Consistent and reproducible results



**Long-term and scalable supply**  
Recombinant technology



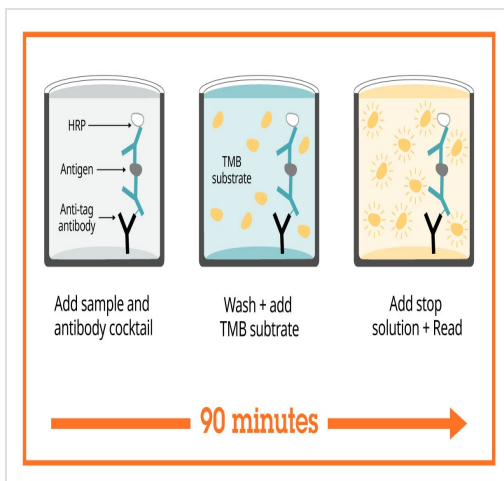
**Success from the first experiment**  
Confirmed specificity



**Ethical standards compliant**  
Animal-free production

To learn more about the advantages of recombinant antibodies see [here](#).





Sandwich ELISA - Mouse Pin1 ELISA Kit  
(ab209879)



Sandwich ELISA - Mouse Pin1 ELISA Kit  
(ab209879)

SimpleStep ELISA technology allows the formation of the antibody-antigen complex in one single step, reducing assay time to 90 minutes. Add samples or standards and antibody mix to wells all at once, incubate, wash, and add your final substrate. See protocol for a detailed step-by-step guide.

**Get more done with SimpleStep ELISA**

- 
**Easy to use**  
 Single-wash 90-minute protocol
- 
**Flexible**  
 Matched antibody pairs available
- 
**Precision antibodies**  
 High sensitivity, specificity and reproducibility
- 
**Scalable**  
 Now in 10-pack and 384-well formats

Sandwich ELISA - Mouse Pin1 ELISA Kit  
(ab209879)

To learn more about the advantages of SimpleStep ELISA<sup>®</sup> kits see [here](#).

**Please note:** All products are "FOR RESEARCH USE ONLY. NOT FOR USE IN DIAGNOSTIC PROCEDURES"

### Our Abpromise to you: Quality guaranteed and expert technical support

- Replacement or refund for products not performing as stated on the datasheet
- Valid for 12 months from date of delivery
- Response to your inquiry within 24 hours
- We provide support in Chinese, English, French, German, Japanese and Spanish
- Extensive multi-media technical resources to help you
- We investigate all quality concerns to ensure our products perform to the highest standards

If the product does not perform as described on this datasheet, we will offer a refund or replacement. For full details of the Abpromise, please visit <https://www.abcam.com/abpromise> or contact our technical team.

## Terms and conditions

---

- Guarantee only valid for products bought direct from Abcam or one of our authorized distributors