

Mouse SAP ELISA Kit ab235639

Recombinant SimpleStep ELISA

[7 Images](#)

Overview

Product name Mouse SAP ELISA Kit

Detection method Colorimetric

Precision

Intra-assay

Sample	n	Mean	SD	CV%
Mouse serum	5			2.4%

Inter-assay

Sample	n	Mean	SD	CV%
Mouse serum	3			5.7%

Sample type

Cell culture supernatant, Serum, EDTA Plasma, Cit plasma

Assay type

Sandwich (quantitative)

Sensitivity

11.3 pg/ml

Range

62.5 pg/ml - 4000 pg/ml

Recovery

Sample specific recovery

Sample type	Average %	Range
Serum	118	109% - 124%
Cell culture media	98	95% - 102%
EDTA Plasma	109	95% - 122%
Cit plasma	97	83% - 109%

Assay time

1h 30m

Assay duration

One step assay

Species reactivity

Reacts with: Mouse

Does not react with: Cow**Product overview**

Mouse SAP ELISA Kit (ab235639) is a single-wash 90 min sandwich ELISA designed for the quantitative measurement of SAP protein in cell culture supernatant, cit plasma, edta plasma, and serum. It uses our proprietary SimpleStep ELISA® technology. Quantitate Mouse SAP with 11.3 pg/ml sensitivity.

SimpleStep ELISA® technology employs capture antibodies conjugated to an affinity tag that is recognized by the monoclonal antibody used to coat our SimpleStep ELISA® plates. This approach to sandwich ELISA allows the formation of the antibody-analyte sandwich complex in a single step, significantly reducing assay time. See the SimpleStep ELISA® protocol summary in the image section for further details. Our SimpleStep ELISA® technology provides several benefits:

- Single-wash protocol reduces assay time to 90 minutes or less
- High sensitivity, specificity and reproducibility from superior antibodies
- Fully validated in biological samples
- 96-wells plate breakable into 12 x 8 wells strips

A 384-well SimpleStep ELISA® microplate (**ab203359**) is available to use as an alternative to the 96-well microplate provided with SimpleStep ELISA® kits.

Platform

Pre-coated microplate (12 x 8 well strips)

Properties**Storage instructions**

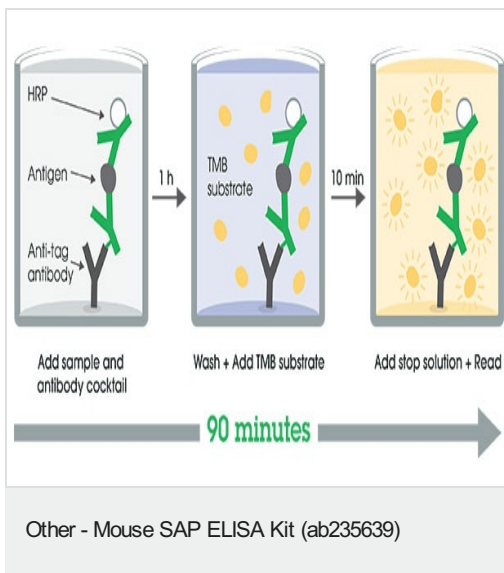
Store at +4°C. Please refer to protocols.

Components	1 x 96 tests
10X Mouse SAP Capture Antibody	1 x 600µl
10X Mouse SAP Detector Antibody	1 x 600µl
10X Wash Buffer PT (ab206977)	1 x 20ml
50X Cell Extraction Enhancer Solution (ab193971)	1 x 1ml
Antibody Diluent 5BR	1 x 6ml
Denaturant	1 x 500µl
Mouse SAP Lyophilized Recombinant Protein	2 vials
Plate Seals	1 unit
Sample Diluent NS (ab193972)	1 x 50ml
SimpleStep Pre-Coated 96-Well Microplate (ab206978)	1 unit
Stop Solution	1 x 12ml

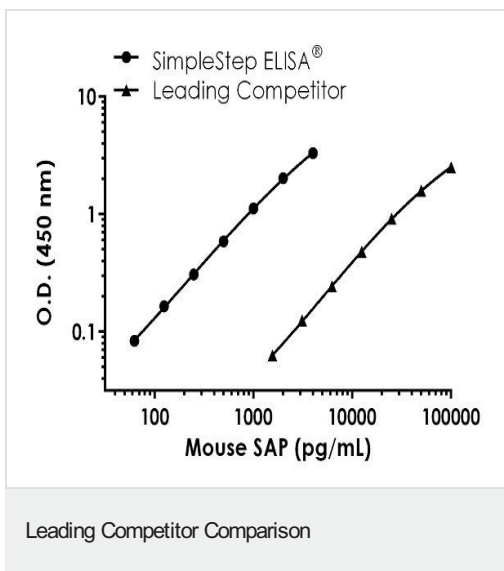
Components	1 x 96 tests
TMB Development Solution	1 x 12ml

Function	Can interact with DNA and histones and may scavenge nuclear material released from damaged circulating cells. May also function as a calcium-dependent lectin.
Tissue specificity	Found in serum and urine.
Involvement in disease	Note=SAP is a precursor of amyloid component P which is found in basement membrane and associated with amyloid deposits.
Sequence similarities	Belongs to the pentaxin family. Contains 1 pentaxin domain.
Post-translational modifications	N-glycosylated with a complex biantennary oligosaccharide chain with a sialic acid at the end (disialo-SAP). Monosialo-SAP as well as asialo-SAP are also detected (PubMed:15174148).
Cellular localization	Secreted.

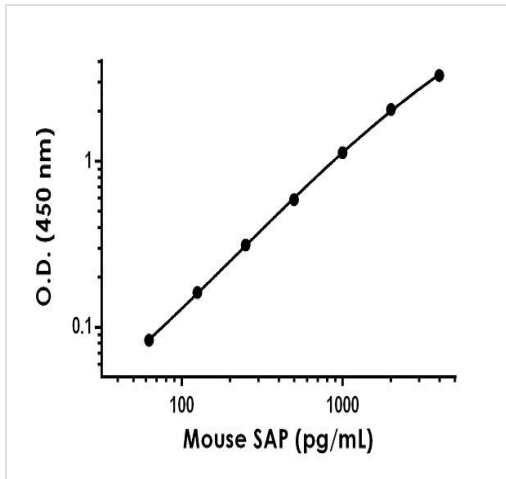
Images



SimpleStep ELISA technology allows the formation of the antibody-antigen complex in one single step, reducing assay time to 90 minutes. Add samples or standards and antibody mix to wells all at once, incubate, wash, and add your final substrate. See protocol for a detailed step-by-step guide.

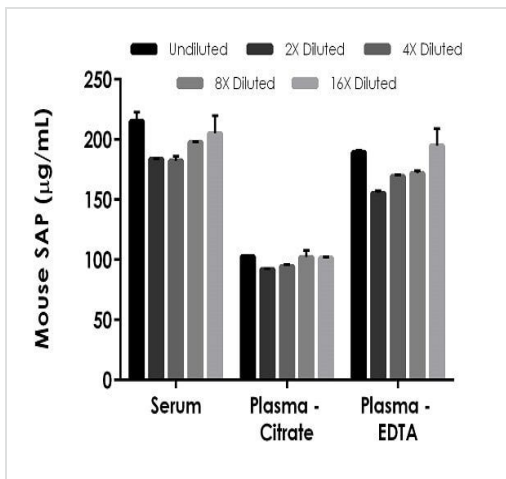


Standard curve comparison between Mouse SAP SimpleStep ELISA[®] kit and traditional ELISA kit from leading competitor. SimpleStep ELISA kit shows increased sensitivity.



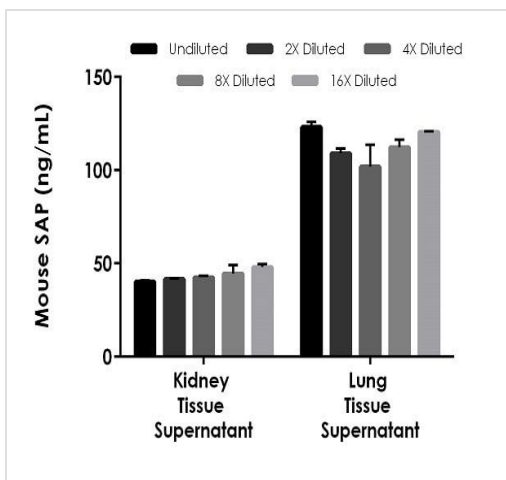
Example of mouse SAP standard curve in Sample Diluent NS + Enhancer.

The SAP standard curve was prepared as described in Section 10. Raw data values are shown in the table. Background-subtracted data values (mean +/- SD) are graphed.



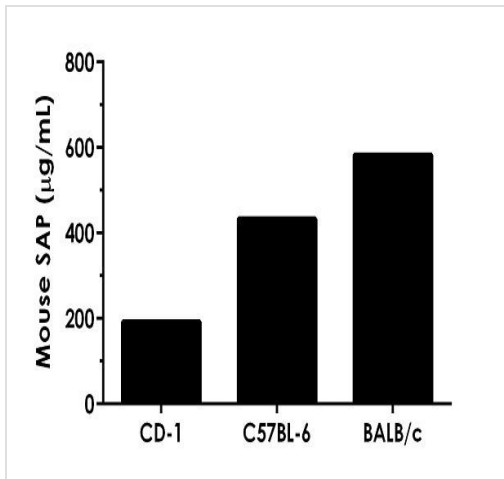
Interpolated concentrations of native SAP in mouse serum and plasma samples.

The concentrations of SAP were measured in duplicates, interpolated from the SAP standard curves and corrected for sample dilution. Undiluted samples are as follows: serum 1:100,000, plasma (citrate) 1:100,000, plasma (EDTA) 1:100,000. The interpolated dilution factor corrected values are plotted (mean +/- SD, n=2). The mean SAP concentration was determined to be 197 µg/mL in neat serum, 98.7 µg/mL in neat plasma (citrate) and 176 µg/mL in neat plasma (EDTA).



Interpolated concentrations of native SAP in mouse kidney and lung tissue supernatant samples.

The concentrations of SAP were measured in duplicates, interpolated from the SAP standard curves and corrected for sample dilution. Undiluted samples are as follows: mouse kidney tissue supernatant 1:100 and mouse lung tissue supernatant 1:100. The interpolated dilution factor corrected values are plotted (mean +/- SD, n=2). The mean SAP concentration was determined to be 43 ng/mL in neat kidney tissue supernatant and 113 ng/mL in neat lung tissue supernatant.



Interpolated dilution factor corrected values are plotted (mean +/- SD, n=2). The mean SAP concentration was determined to be 193 µg/mL in neat CD-1 serum, 433 µg/mL in neat C57BL-6 serum, and 583 µg/mL in neat BALB/c serum.

Serum samples from three strains of mice were measured in duplicate.

Powered by recombinant antibodies

<p>Research with confidence Consistent and reproducible results</p>	<p>Long-term and scalable supply Recombinant technology</p>
<p>Success from the first experiment Confirmed specificity</p>	<p>Ethical standards compliant Animal-free production</p>

Sandwich ELISA - Mouse SAP ELISA Kit
(ab235639)

To learn more about the advantages of recombinant antibodies see [here](#).

Please note: All products are "FOR RESEARCH USE ONLY. NOT FOR USE IN DIAGNOSTIC PROCEDURES"

Our Abpromise to you: Quality guaranteed and expert technical support

- Replacement or refund for products not performing as stated on the datasheet
- Valid for 12 months from date of delivery
- Response to your inquiry within 24 hours
- We provide support in Chinese, English, French, German, Japanese and Spanish
- Extensive multi-media technical resources to help you
- We investigate all quality concerns to ensure our products perform to the highest standards

If the product does not perform as described on this datasheet, we will offer a refund or replacement. For full details of the Abpromise, please visit <https://www.abcam.com/abpromise> or contact our technical team.

Terms and conditions

- Guarantee only valid for products bought direct from Abcam or one of our authorized distributors