

Product datasheet

Mouse TECK ELISA Kit (CCL25) ab269560

Recombinant SimpleStep ELISA®

[4 Images](#)

Overview

Product name Mouse TECK ELISA Kit (CCL25)

Detection method Colorimetric

Precision

Intra-assay

Sample	n	Mean	SD	CV%
Extract	3			2%

Inter-assay

Sample	n	Mean	SD	CV%
Extract	8			2.2%

Sample type

Tissue Extracts

Assay type

Sandwich (quantitative)

Sensitivity

7.4 pg/ml

Range

12.5 pg/ml - 800 pg/ml

Recovery

Sample specific recovery

Sample type	Average %	Range
Tissue Extracts	99	89% - 114%

Assay time

1h 30m

Assay duration

One step assay

Species reactivity

Reacts with: Mouse

Product overview

Mouse TECK ELISA Kit (CCL25) (ab269560) is a single-wash 90 min sandwich ELISA designed for the quantitative measurement of TECK (CCL25) protein in tissue extracts. It uses our proprietary SimpleStep ELISA® technology. Quantitate Mouse TECK (CCL25) with 7.4 pg/ml sensitivity.

SimpleStep ELISA® technology employs capture antibodies conjugated to an affinity tag that is

recognized by the monoclonal antibody used to coat our SimpleStep ELISA® plates. This approach to sandwich ELISA allows the formation of the antibody-analyte sandwich complex in a single step, significantly reducing assay time. See the SimpleStep ELISA® protocol summary in the image section for further details. Our SimpleStep ELISA® technology provides several benefits:

- Single-wash protocol reduces assay time to 90 minutes or less
- High sensitivity, specificity and reproducibility from superior antibodies
- Fully validated in biological samples
- 96-wells plate breakable into 12 x 8 wells strips

A 384-well SimpleStep ELISA® microplate ([ab203359](#)) is available to use as an alternative to the 96-well microplate provided with SimpleStep ELISA® kits.

Notes

Mouse TECK (CCL25) is a CC chemokine produced by stromal cells in the thymus and epithelial cells of the small intestine. TECK is involved in human T-cell development inducing chemoattraction through CCR9 on immature pre-T cells and thymocytes. TECK induces the homing of several lymphocyte populations to the small intestine, including integrin $\alpha 4\beta 7$ γ /delta T cells, Integrin $\alpha E\beta 7$ γ CD8 $^{+}$ T cells, and IgA-producing plasma cells. In human cancer, TECK promotes the metastasis of melanoma cells, migration and invasion of some breast carcinomas, and mesenchymal stromal cells in multiple myelomas. TECK attracts CCR9 $^{+}$ monocytes and macrophages in rheumatoid arthritis and CCR9 $^{+}$ macrophages in atherosclerosis. Mouse TECK shares 50% ,81% and 61 % sequence homology with mouse, rat and cow, respectively

Abcam has not and does not intend to apply for the REACH Authorisation of customers' uses of products that contain European Authorisation list (Annex XIV) substances.

It is the responsibility of our customers to check the necessity of application of REACH Authorisation, and any other relevant authorisations, for their intended uses.

Platform Pre-coated microplate (12 x 8 well strips)

Properties

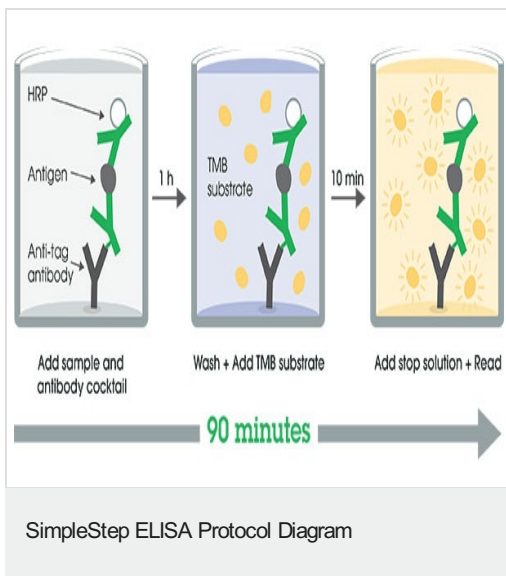
Storage instructions Store at +4°C. Please refer to protocols.

Components	1 x 96 tests
10X Mouse TECK (CCL25) Capture Antibody	1 x 600µl
10X Mouse TECK (CCL25) Detector Antibody	1 x 600µl
10X Wash Buffer PT (ab206977)	1 x 20ml
5X Cell Extraction Buffer PTR (ab193970)	1 x 10ml
Antibody Diluent CPR2	1 x 6ml
Mouse TECK (CCL25) Lyophilized Recombinant Protein	2 vials
Plate Seals	1 unit

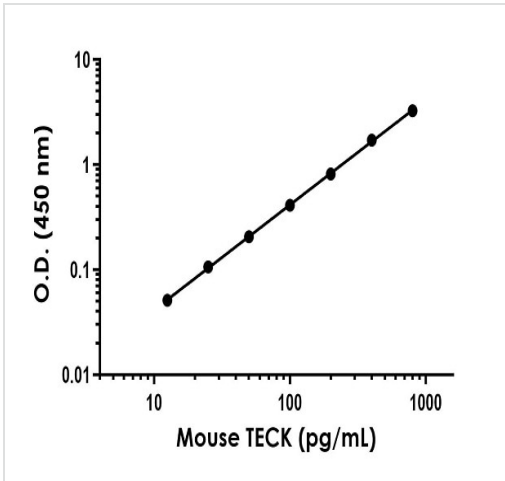
Components	1 x 96 tests
Sample Diluent NS (ab193972)	1 x 12ml
SimpleStep Pre-Coated 96-Well Microplate (ab206978)	1 unit
Stop Solution	1 x 12ml
TMB Development Solution	1 x 12ml

Function	Potentially involved in T-cell development. Recombinant protein shows chemotactic activity on thymocytes, macrophages, THP-1 cells, and dendritic cells but is inactive on peripheral blood lymphocytes and neutrophils. Binds to CCR9. Isoform 2 is an antagonist of isoform 1.
Tissue specificity	Specifically expressed by thymic dendritic cells. High levels in thymus and small intestine.
Sequence similarities	Belongs to the intercrine beta (chemokine CC) family.
Cellular localization	Secreted.

Images

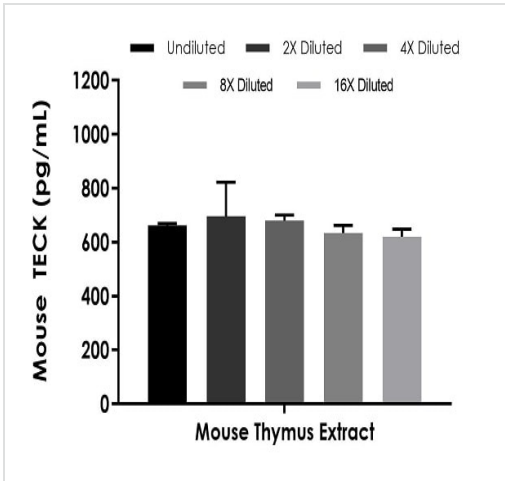


SimpleStep ELISA technology allows the formation of the antibody-antigen complex in one single step, reducing assay time to 90 minutes. Add samples or standards and antibody mix to wells all at once, incubate, wash, and add your final substrate. See protocol for a detailed step-by-step guide.



Example of mouse TECK standard curve in 1X Cell Extraction Buffer PTR.

The TECK standard curve was prepared as described in Section 10. Raw data values are shown in the table. Background-subtracted data values (mean +/- SD) are graphed.



Interpolated concentrations of native TECK in mouse thymus extract samples based on a 75 µg/mL extract load.

The concentrations of TECK were measured in duplicate and interpolated from the TECK standard curve and corrected for sample dilution. The interpolated dilution factor corrected values are plotted (mean +/- SD, n=2). The mean TECK concentration was determined to be 658 pg/mL in thymus extract.

Powered by recombinant antibodies

- Research with confidence**
Consistent and reproducible results
- Long-term and scalable supply**
Recombinant technology
- Success from the first experiment**
Confirmed specificity
- Ethical standards compliant**
Animal-free production

Sandwich ELISA - Mouse TECK ELISA Kit (CCL25) (ab269560)

To learn more about the advantages of recombinant antibodies see [here](#).

Please note: All products are "FOR RESEARCH USE ONLY. NOT FOR USE IN DIAGNOSTIC PROCEDURES"

Our Abpromise to you: Quality guaranteed and expert technical support

- Replacement or refund for products not performing as stated on the datasheet
- Valid for 12 months from date of delivery
- Response to your inquiry within 24 hours
- We provide support in Chinese, English, French, German, Japanese and Spanish
- Extensive multi-media technical resources to help you
- We investigate all quality concerns to ensure our products perform to the highest standards

If the product does not perform as described on this datasheet, we will offer a refund or replacement. For full details of the Abpromise, please visit <https://www.abcam.com/abpromise> or contact our technical team.

Terms and conditions

- Guarantee only valid for products bought direct from Abcam or one of our authorized distributors